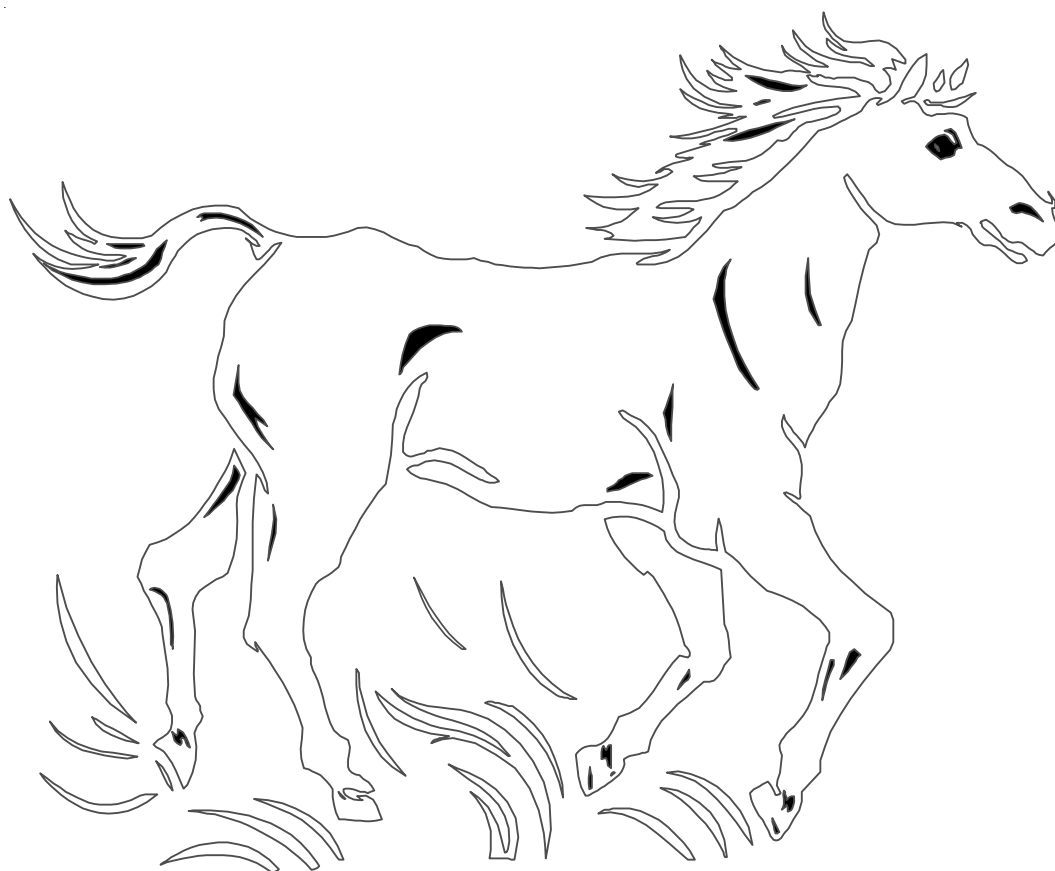




New Hampshire Supplement to the New England 4-H Horse Show Rules and Guidelines



Revised March 2008



UNIVERSITY of NEW HAMPSHIRE
COOPERATIVE EXTENSION

UNH Cooperative Extension programs and policies are consistent with pertinent Federal and State laws and regulations and prohibits discrimination in all its programs, activities and employment on the basis of race, color, national origin, gender, religion, age, disability, political beliefs, sex, sexual orientation, veteran's, marital or family status. New Hampshire counties cooperating.

Table of Contents

INTRODUCTION	4
1. RULES AND REGULATIONS.....	6
1.1 Use of the Name and Emblem of 4-H.....	6
1.2 Qualifying Shows	6
1.3 Judges.....	6
1.4 List of State Show Contestants.....	7
1.5 Number of Entries	7
1.6 Eastern States Delegates	7
1.7 Eligibility of Members and Animals for 4-H Shows and Competitive Activities.....	7
2. GUIDELINES	10
2.1 Health Precautions for Horse Shows and Events	10
2.2 Insurance Information for Horse Shows, Clubs, Events.....	11
2.3 Release of Liability Statement for Shows and Events: Adjustable	11
2.4 Walk-Trot Division.....	12
3. SHOW PERSONNEL & THEIR RESPONSIBILITIES	13
3.1 Show Committee.....	13
3.2 Judges and Judging.....	14
3.3 Split Classes	14
3.4 Uniformity	14
4. CLASSES.....	15
4.1 Disciplined Rail Horse or Pony	15
4.1.1 General	15
4.1.2 Scoring.....	15
4.1.3 Tack, Equipment and Appointments	15
4.1.4 Class Procedure	15
4.1.5 Divisions	15
4.1.6 Disqualifications	16
4.2 Fitting and Showmanship.....	16
4.2.1 Scoring.....	16
4.2.2 Explanation of Danish System of Scoring	16
4.3 Handiness Class	17
4.3.1 General	17
4.3.2 Scoring.....	17
4.3.3 Class Procedure	18
4.3.4 Disqualifications	19
4.4 Horsemanship (Equitation class)	19
4.5 Driving Division	21
4.5.1 General	21
4.5.2 Safety	21
4.5.3 Tack and Equipment.....	21
4.5.4 Appointments	22

4.6	Reinsmanship	22
4.6.1	General	22
4.6.2	Scoring	22
4.6.3	Tack and Equipment	22
4.6.4	Appointments	22
4.6.5	Class Procedure	22
4.6.6	Disqualifications	23
4.7	Disciplined Rail Driving - Horse, Pony or Miniature	23
4.7.1	General	23
4.7.2	Tack, Equipment and Appointments	23
4.7.3	Scoring	23
4.7.4	Procedure	24
4.8	Pleasure Driving	24
4.8.1	General	24
4.8.2	Scoring	24
4.8.3	Tack and Equipment	25
4.8.4	Vehicle	25
4.8.5	Appointments	25
4.8.6	Class Procedure	25
4.8.7	Disqualifications	25
4.9	Driving Handiness	25
4.9.1	Procedures	25
4.9.2	Scoring	26
4.10	Obstacle Driving	26
4.10.1	General	26
4.10.2	Tack and Equipment	26
4.10.3	Scoring	26
4.10.4	Class Procedure	26
	Appendix A - Uniform Equine Scorecard	28
	Appendix A - Uniform Equine Scorecard	30
	Appendix B - Fitting & Showmanship Scorecard (one judge)	30
	Appendix D - Suggested Horsemanship Criteria	32
	Appendix C - Fitting & Showmanship Scorecard (two judge)	33
	Appendix - Pole Bending	34
	Appendix F - Barrel Racing	35
	Additional Forms Needed	36

New Hampshire Supplement to the New England 4-H Horse Show Rules and Guidelines

INTRODUCTION

These rules have been developed to serve as a basic guide for local, county, and state 4-H horse shows as well as for those classes in open shows limited to 4-H membership entry.

There is no intent in the publication of these rules to suggest that all classes listed should be held at any show, nor is any limitation implied of shows to only those classes listed. It is suggested that 4-H shows adapt these rules to govern the operation of these shows.

When using this guide, you will find that it includes three types of statements:

1. Rules and procedures that **MUST** be followed.
2. Suggested policies for situations that may be variable.
3. Guidelines that serve to aid in planning and executing horse events.

It is the intention of UNH Cooperative Extension that 4-H Youth Development programs be inclusive programs which include all interested youth. A sincere effort has been made to provide 4-H opportunities in and out of the club for all youth.

The 4-H competitive horse show welcomes youth of all abilities. For safety reasons, no youth in competitive 4-H horse shows may be led. Each rider must be capable of starting, stopping, and turning his/her horse at a walk and a trot. This rule is established for the safety of all concerned. Side walkers and other forms of ring assistance necessary to allow for full participation by a 4-H member are permitted and encouraged.

When youth are assigned to the appropriate horse show class and the youth with disabilities are appropriately supported, participating youth can compete on a level playing field.

Show classes exist for youth of varying abilities. Decisions regarding appropriate class placement must be determined by a consensus of the youth involved, their Extension Educator, their leader, instructor, and parent/guardian. This group will also determine that delegates qualifying for the State 4-H State Horse Show or the Eastern States Exposition 4-H Show have reached the appropriate level of achievement for their ability and that both the horse and rider can safely perform at the next level.

Rules for each of the classes coincide as appropriate with the U.S. Equestrian Federation, Inc., and the New Hampshire Horse and Trail Association, in addition to the rules set up by 4-H programs in neighboring states to try to unify showing procedures and rules as much as possible. In doing so, safety, good taste and the establishment of a good public image are paramount. 4-H is a youth development program.

With the publication of this manual, it is assumed that all 4-H shows will be run in accordance with these rules and guidelines unless exceptions are noted in the class list.

OBJECTIVES FOR THE NEW HAMPSHIRE 4-H HORSE SHOW

A. Help 4-H Club Members:

1. To develop personal traits which will enable them to become more effective citizens and to assume roles of leadership.
2. To develop team work and sportsmanship.
3. To become aware of opportunities within the horse industry.
4. To learn and better understand new developments and methods in agriculture as related to the horse industry.
5. To obtain wholesome competitive experience on a broader level above and beyond those available in the individual counties.
6. To exhibit animals they have cared for and carried in project work over an extended period.

B. To make the general public more aware of the skills and accomplishments of 4-H horse club members.

1. RULES AND REGULATIONS

1.1 Use of the Name and Emblem of 4-H

The use of the name and emblem of 4-H is regulated by federal law. This law states that only activities or programs under supervision of Cooperative Extension may use the name and emblem of 4-H club work. Any district, area, or state 4-H horse show must have approval of the State 4-H Office. Local and county 4-H horse shows must have the approval of the county Extension Educator, 4-H. Shows or events sponsored by other organizations or individuals and shows which do provide separate classes for 4-H members are not permitted to use the name and emblem of 4-H without the approval of county Extension offices.

1.2 Qualifying Shows

A county may have one or more 4-H shows to qualify members for the state 4-H horse show. All county 4-H horse project members must be notified at least two weeks prior to the first show as to which ones are qualifying shows. All members should be encouraged to participate.

1. A qualifying show is one in which only 4-H members can compete. A member must qualify in the county in which he is enrolled; however an exception will be made for a county where there is inadequate enrollment. The approval of the 4-H Horse Advisory Committee and/or the State 4-H Office is required.
2. All county qualifying shows must be held early enough to select riders for the state show and all state show qualified entries, including alternates, must be postmarked by the entry deadline date specified on the state show entry.
3. If a child advances from a lower division to a higher division, the approval form must be updated and changes signed by the leader and educator. Once this change is made the member may not revert to a lower division.

1.3 Judges

Judges will be competent, well-qualified individuals. The judge must place each class in accordance with the rules and class specifications of this handbook. The decision of the judge is final. An exhibitor does not have the right to inspect the judges cards without the permission of the judge. However, an exhibitor may request, through the show manager or steward, the reason for a decision and, at the proper time and place, the show manager and/or steward may request the judge to give his/her reasons. At no time may a judge be approached with regard to any decision while judging or about to judge. Spectators (anyone other than the show committee or exhibitors) will not question or visit with the judge. Any questions from such individuals must be channeled through the show manager or steward. Exhibitors will not argue with a judge.

1.4 List of State Show Contestants

A list of qualified individuals and alternates must be approved and signed by the 4-H Educator and sent to the superintendent of the state horse show prior to the entry deadline. Age requirement is 12 years as of January 1st of the current program year. Participants are expected to walk, trot and canter. Walk, trot participants with permanent documented physical disabilities which limit their ability to canter are eligible to try for state show and will be accommodated if they are selected. Only those members listed and entries received as stated, (see section 1.2, #2), will be allowed to exhibit. All changes, (scratches, changes of alternates to contestants, etc.) in the entries must be made to the State 4-H Office. No alternative substitutions will be made on the day of the show.

1.5 Number of Entries

The number of entries per county will be based on the official enrollment of 4-H horse club members of each county who are qualified to participate in the state show by virtue of age and submission of HORSE APPROVAL FORM as of May 1st of that year, and the number of members age 12 and over with a valid approval form participating in the county's previous two years qualifying show.

1.6 Eastern States Delegates

Entry signature on the state show entry will cover Eastern States as well; qualified entries will be handed in the last day of the state show before exhibitor leaves the grounds. If the entry is not received at this time, the entry will automatically be canceled and the first alternate accepted. Approval Forms deadline for eligibility to Eastern States is April 1. Eastern States must be a minimum of 12 years old as of January 1st of the current program year.

1.7 Eligibility of Members and Animals for 4-H Shows and Competitive Activities

1. Members must be enrolled in the horse project and be a member in good standing in a club or as an independent member. Members 8-18 as of January 1st of the current program year are eligible to participate in a 4-H Horse Show/class. Youth with documented disabilities may continue through age 20, if they are continuing to receive educational services from the State of New Hampshire. Persons age 21 or over are adults in the NH 4-H program. All 4-H participants will participate in the divisions appropriate for their development. Assistance at an event or activity, if needed, will be provided by an appropriate person with the preferred order of assistance being: 1. Another 4-Her (preferably a horseless member), 2. Another adult, 3. Instructor, 4. Parent.

2. Anytime the ages of members are taken into consideration, the ages will be calculated as of January 1st of the current program year. The two main divisions will be juniors, ages 8 through 13, and seniors, 14 and over.
3. The member must be enrolled in the 4-H horse project by the county deadline of enrollment of the current year, and the horse or pony they intend to use as their project animal and in competition must be designated on a HORSE APPROVAL FORM for the 4-H horse project members, and filed with the county 4-H office by May 1st (April 1st for ESE). These forms are available from the county Extension office in each county. A member carrying the 4-H horse project MUST complete one of these forms and have it verified by the designated people in order to participate in 4-H horse shows and competition events. A description of the project animal must be filled out on the form before it can be verified. (See appendix for sample of form).

Every county will use an embosser or stamp to verify the Extension Educator's signature on all HORSE APPROVAL FORMS. The Extension Educator will sign the form directly under the last entry. Each signature of the Extension Educator requires a stamp or embossing.

4. A member may carry more than one animal for his/her 4-H project. If this is the case, each animal must be listed on a HORSE APPROVAL FORM.
5. The member must present the HORSE APPROVAL FORM to the show secretary at each show before being allowed to participate in a 4-H horse show. It is mandatory to present this form for 4-H classes in open horse shows sponsored by organized horse clubs and the NH Horse and Trail Association. Any horse listed on a horse approval form after April 1st, but before May 1st is eligible for State Show but is not eligible for Eastern States Exposition.
6. Project animals will NOT be switched during the year. In exceptional cases, (such as if the animal dies or is rendered verifiably unsound upon decision of a veterinarian), the member must fill out a new HORSE APPROVAL FORM upon purchase of a new animal and have it verified by an Extension Educator, with the approval of the local leader. This animal cannot be shown in a 4-H horse show or 4-H classes in an affiliated show until 30 days after the above stated procedures have taken place. This animal is not eligible for the State 4-H Show or Eastern States Exposition.
7. A member must show one and the same horse at the progression of the county to the state to the Eastern States Exposition. If the horse that competed at the county or state show is injured or sick and cannot compete at the next 4-H show, the 4-Her may not borrow a horse to continue in competition. However, if a member has a second horse duly entered on a HORSE APPROVAL FORM prior to May 1st, this animal may be shown upon the approval of the 4-H Extension Educator. Once entries are sent to the Eastern States Exposition, no delegate may switch

horses for any reason. If a horse becomes unable to compete, a new horse and rider team from the state alternate list will be substituted.

8. A member owning his/her own horse must manage said horse 50% of the time within his/her physical and mental capability. This includes feeding, grooming, exercising, training, stall management and access to use.
9. Two members may share the same horse if each member assumes 50% care of the horse within his/her or her physical and mental capability. This includes feeding, grooming, exercising, training, stall management and access to use. A lease must be in place for non-family owned horses and both members must have a signed statement that each member manages/cares for the horse on a 50% basis and has free access to the horse.
10. Although two members may share a horse to the extent of completing the project at the county level, only one member may exhibit the horse at the state horse show.
11. Horses CANNOT be leased, rented or borrowed from private or professional riding stables or owners for the sole purpose of showing, and cannot have been trained by professionals within 30 days prior to competing in 4-H shows. (A special class within the county show may be an exception.)
12. Any type of equine may be used for a 4-H Horse Project. The animal should suit the size, skill and competency of the rider. The rider should be able to keep the animal under control at all times and manage him safely.
13. All equines are suitable for this project.
14. Horses two years of age or under as of January 1st of the current year cannot be shown in any under saddle classes.
15. No stallions (intact male horses) over one year of age will be permitted in any youth class. Note: At the State Horse Show, mares with foals will not be allowed on the grounds.
16. Animals must be serviceably sound. The administration of any drug to a horse shown in any 4-H class is strictly prohibited unless a veterinarian certificate verifying the soundness of the horse for use and the prescribed treatment/medication is presented at registration.
17. Horses that naturally perform at a lateral gait as opposed to a diagonal gait will be judged accordingly (Ex. Tennessee Walking Horse).
18. Animals that are known to kick must be marked by a red ribbon in the tail.
19. Show may require the removal of any schooling or training devices which may be deemed unsafe, abusive, or excessive. Protective coverings are allowed in the

schooling area. Action-enhancing equipment of any kind is prohibited anywhere on the grounds (e.g. shackles, rattles, chains). Martingales, rein devices, etc. are common schooling devices.

20. Any treatment of a horse by anyone on the grounds which may be considered cruel, abusive or unnecessary is prohibited. The show committee, after one verbal warning, may take appropriate action.
21. Equestrian Helmets:
 - a. All participants in any UNH Cooperative Extension or 4-H Youth Development sponsored equestrian event or activity will wear a properly fitted equestrian helmet which carries ASTM/SEI approval with secured chin harness properly fastened at all times when mounted on an equine or in a vehicle being pulled by one or more equines. This includes participation in events representing 4-H (like parades or exhibitions).
 - b. It is the responsibility of the rider or parent or guardian of a minor rider, to see to it that the headgear worn complies with such approved standards and carries the proper seals, and is in good working condition. The University of New Hampshire Cooperative Extension, Organizing Committees and Licensed officials are not responsible for checking headgear worn for such compliance. UNH Cooperative Extension makes no representation of warranty, expressed or implied, about such head gear and cautions riders that serious injury or death may result despite wearing such head gear, as no helmet can protect against all foreseeable injuries in equestrian sports.
 - c. The approved helmet is required for all participants, all mounted and driving classes, all seats, all ages.
 - d. The approved helmet requirement supersedes all hat and helmet requirements as stated under appointments in the following set of rules and regulations.
22. Riders/Drivers may use or wear without penalty, personal protective gear, such as but not limited to, body protection vests, shin guards, mouth guards, etc.
23. Youth with documented disabilities will not be penalized for using special equipment or special assistance to perform in a riding or fitting and showmanship class. Youth with documented disabilities may receive accommodations in the form of modified testing.

2. GUIDELINES

2.1 Health Precautions for Horse Shows and Events

Show committees or management may require a health statement from a veterinarian stating that the animal is sound and free from communicable diseases, to be presented

upon registration at a show or event. All equines must be vaccinated for rabies and a verification of this must accompany the animal to all events. It is recommended that all horses be properly immunized, particularly for tetanus and sleeping sickness before being taken to any horse event.

2.2 Insurance Information for Horse Shows, Clubs, Events

1. An accident year-round insurance coverage plan is available through some insurance companies to members and leaders of organized 4-H Clubs for a minimal fee. It is suggested that this insurance be purchased for all 4-H Special Interest Horse Clubs. Information is available at County or State Extension Offices.
2. It is recommended that members, parents, Extension Educators and any other person involved directly with horses and horse events check their personal insurance policies for liability coverage.
3. The show management should be acutely aware of the necessity for adequate insurance coverage for any liability arising from incidents which could occur at horse shows.
 - a. In addition to the actual coverage for the show itself, the Show Committee should require that all independent contractors, including concessionaires, be required to provide evidence that they have Workmen's Compensation Insurance and Public Liability in force for the duration of the show or event.
 - b. Shows sponsored by 4-H and operating under 4-H policies are covered by the USNH general comprehensive liability policy. Each participant and legal guardian/parent of minor participants must sign and date the following waiver:

2.3 Release of Liability Statement for Shows and Events: Adjustable

I understand the risks, hazards and dangers inherent in this equine activity including the possibility of injury or death. I agree for myself and my heirs to release and hold harmless, defend and indemnify the University of New Hampshire, UNH Cooperative Extension, its trustees, officers, agents, employees and volunteers and this activity's judges and stewards from and against all claims, demands, action and causes of action as a result of personal injury, death, or property damage sustained by me or others as a result of my participation. I bring my animals at my own risk and I am aware of the hazards associated with participation and with the handling of equine animals. I will be financially responsible for physical or financial damage done by myself or my animals to another person or property.

STATEMENT OF AWARENESS:

I, THE UNDERSIGNED, BEING OF LEGAL AGE, OR THE PARENT OR LEGAL GUARDIAN OF A MINOR CHILD, HAVE READ AND UNDERSTAND THE FOREGOING AGREEMENT AND RELEASE.

EACH LEGAL AGE PARTICIPANT, PARENT OR LEGAL GUARDIAN OF A MINOR PARTICIPANT MUST SIGN BELOW:

SIGNATURE OF PARTICIPANT

DATE

SIGNATURE OF PARENT/GUARDIAN

for

NAME OF PARTICIPANT (Please Print)

DATE

ADDRESS IN FULL _____

HOME PHONE: () _____ BUSINESS PHONE: () _____

2.4 Walk-Trot Division

Show classes exist for riders of varying abilities. 4-Hers are expected to participate in classes at the highest level for which they meet the criteria.

1. The walk-trot division is not for experienced riders on inexperienced horses; nor is it to be used as a haven for youth who are inappropriately over-mounted.
2. For safety reasons, UNH Cooperative Extension 4-H Youth Development programs do not offer competitive horse show classes for persons requiring a lead-line. Some classes permit sidewalkers and/or other assistance as necessary for youth with documented disabilities. Large classes may be separated for safety reasons. Riders with sidewalkers should be placed in a "sidewalker only" class.
3. Recommended divisions are:
 - a. Walk Trot A (WTA): Open to any rider (with or without documented disabilities), age 8 and older. After two years in this class, a rider is encouraged to move on to the next appropriate level class. (This class may be split into Jr Walk/Trot A - 8-13 years old; Sr Walk/Trot A - 14 and over). Rider must never have shown a horse in a class requiring a canter. Placed Danish, no championships or point awarded. Riders in this division are not eligible for State 4-H Horse Show.
 - b. Walk Trot Canter A (WTCA): Open to any age rider (with or without documented disabilities), age 8 and older in their first year of showing at a canter (This class may be split into Jr WTCA - 8-13 years old; Sr WTCA - 14 and over). Classes may

canter individually or as a group. Regular placing, championships allowed. Riders in this division are not eligible for State 4-H Horse Show.

- c. Walk Trot B (WTB): Open to any age rider with a documented disability. Rider must never have shown a horse in a class requiring a canter. Rider may stay in this division until they and their 4-H leader, instructor, and parent feel they are ready to advance. Regular placing, championships allowed. Riders age 12 and older are eligible for State Show if they will not be capable of moving on to WTCA or WTCB after two years in this division and are ready for additional challenges.
- d. Walk Trot Canter B (WTCB): Open to any age rider with a documented disability. Class may canter individually or as a group. Rider may stay in this division until they and their 4-H leader, instructor, and parent feel they are ready to advance. Regular placing, championships allowed. Riders age 12 and older are eligible for State Show if they will not be capable of moving on to Junior or Senior after two years in this division and are ready for additional challenges.

Show personnel may want to add classes as appropriate for the walk trot participant. Classes could include equitation, pleasure, trail, and games or other classes as appropriate. Classes may be divided or combined for safety considerations or for instances that best meet the needs of the sponsoring show.

3. SHOW PERSONNEL & THEIR RESPONSIBILITIES

3.1 Show Committee

1. The show committee will be responsible for the operation of the show. It will be the duty of this committee to enforce all rules as set forth in the rule book.
2. The show committee will determine the requirements for any class that is not clearly defined in the manual and post the course, in cases where necessary, at least one hour before the scheduled time of class.
3. The show committee will eliminate, without waiting for protest to be made, any improper entrant of a horse or rider, after notifying entrant of the error.
4. It is recommended that the show committee include in their show rules and conditions, that proof of the exhibitor's age is required and must be available for inspection during the show. They must also insist that for a 4-H Show or a 4-H Class in an open show the exhibitor present the HORSE APPROVAL FORM.
5. The show committee has the right to select a steward. A steward should clearly understand that he has no connection with the show committee or personal involvement with the judging of the show. He/she should point out in a diplomatic manner any instances where the rules are not enforced. He/she should not dictate to the judges of the show committee, but should immediately report to

the appropriate officials any violations of the rules which might invalidate a class. He/she should keep him/herself available to judges, exhibitors, and the show committee at all times to clarify the application of the state 4-H horse rules and to investigate any situation where the rules are not upheld.

6. It is the responsibility of the show committee to provide a copy of this rule book to the judge for his/her use two weeks prior to the event.
7. Show committees/judges are all responsible for noting any cases in which an entry poses a danger to other entrants. The judge may dismiss any entry that presents a risk to themselves or other entrants in the ring.

3.2 Judges and Judging

1. Good judging depends upon the correct observance of horses and/or riders and the measuring of them against a standard commonly accepted as the ideal, according to the conditions of the class being judged. A judge serves three interests: his/her own conscience, the exhibitors, and the spectators. He/she should make clear to the audience that it is the best horse or riders in his/her opinion, who win. If the judge is unclear about something, he/she should feel free to ask the child or show superintendent about the situation. 4-H club work is a learning experience, and the members should be able to follow the judging procedure.
2. A judge must adjudicate each class in conformity with the rules and specifications of the class as they appear in the rule book.
3. The decision of the judge is based solely on his/her individual preference.
4. It is recommended that the judge give a few comments after each class.

3.3 Split Classes

1. The show committee has the right to cancel or combine classes with less than three entries.
2. It is recommended that classes with more than twelve entries be split. The show committee has the right to split any class where size or rider's abilities endanger the exhibitors in that class. Splitting should be done before the exhibitors enter the ring.

3.4 Uniformity

1. It is recommended that there be uniformity between classes and that a scorecard, including the judging criteria from the rule book for the class to be judged, be given to the judge for guidance before the class starts.

4. CLASSES

4.1 Disciplined Rail Horse or Pony

4.1.1 General

This class is to show the ability of a highly trained equine. Judge shall work the entries adequately but must not overwork them. This is not a game or a fault and out class, and shall not be judged on an elimination basis. Final judging shall be on the basis of the best overall disciplined rail performance including responsiveness, manners, and quality of movements. At all times, the safety of the horses and exhibitors to be the first concern.

4.1.2 Scoring

To be judged on performance, smoothness, obedience and consistency.

4.1.3 Tack, Equipment and Appointments

Refer to New England 4-H Horse Show Rules and Guidelines, page 26.

4.1.4 Class Procedure

The class routine shall be to perform work on the rail, and may include, but is not limited to:

- a. A short walk, jog or slow lope.
- b. A hand gallop (no more than eight horses at a time, twice around the ring).
- c. Starting into a lope from a halt.
- d. Starting and traveling on the incorrect lead.
- e. Side pass both away from the rail (at least five steps) and then back to the rail.
- f. Turn on forehand and turn on hind quarter (once each way).
- g. Stop and stand quietly on a loose rein.
- h. Judge may ask for a reverse at the jog but not at the lope.
- i. Judge may ask for additional safe work.

4.1.5 Divisions

1. Discipline Rail, Senior Riders - open to riders 14 years old and older as of January 1st of current year.

2. Discipline Rail, Junior Riders – open to riders 13 years old and younger as of January 1st of current year.

4.1.6 Disqualifications

Refer to Saddle Seat Disqualifications, New England 4-H Horse Show Rules and Guidelines, page 18.

4.2 Fitting and Showmanship

4.2.1 Scoring

1. 4-H Fitting and Showmanship classes will be scored according to the specified system of judging; scoring each category according to the established point system.
2. Classes may be placed according to the Danish System. Ribbons will be awarded according to total scores from the judge's card (Uniform Score Card).

ONE JUDGE SCORING

Blue = 90-100
Red = 80-89
White = 0-79

TWO JUDGE SCORING (2 Stations)

Blue = 85-100
Red = 70-84
White = 0-69

4.2.2 Explanation of Danish System of Scoring

1. Danish System is designed to individually score contestants on the merits of their performance. Each individual competes against the criteria designated in the rule book under "class description". Competitors DO NOT compete against each other so much as they compete against a theoretical perfect performance. The judge must determine what percent of perfect the competitor performed.
2. Differences Between Fitting & Showmanship and Performance Classes.
Danish and Show Scoring:
 - a. Fitting and Showmanship -A perfect score is 100%. If the contestant performed 90% perfect or better, he/she scores a Blue (grade A) Danish ribbon. If his/her score is between 80-89% perfect, he receives a Red (grade B) Danish ribbon. 79% perfect or below scores a White (grade C) Danish ribbon. The actual numerical score the judge awards each competitor is used as the show point score for that class.

NOTE: The percentage (%) is different for two judge scoring.

- b. Performance Classes - Performance classes are scored against a perfect score of 50. The judge must determine what level the competitor performed at. If the judge determines the rider performed 90% perfect or better, the rider scores a Blue (grade A) Danish ribbon and 45 show points (see next paragraph

regarding distribution of points 46-50). A 80-89% perfect ride scores 30 show points and a Red (grade B) Danish ribbon. 79% perfect or below scores 15 show points and a White (grade C) Danish ribbon.

- c. Blue Danish Ribbon Breakdown - The judge may award blue Danish winners individually with a score between 45-50. (Example: Rider one performs near perfect, the judge awards him/her a Blue Danish ribbon and a show point score of 49. Rider two makes a small error and also receives a Blue Danish ribbon and a show point score of 48. All riders making the blue Danish ribbon standard, but not earning bonus points will receive 45 points). This method of individual placement in the Blue Danish group awards the very top riders with extra show points. The judge may award several riders with the same show point score.
 - d. Definition of Show Points - Show points are awarded to each competitor in each class to determine the end of the day Championships. They are also used at county shows to determine the winning riders that will attend the State 4-H Horse Show or at State Show to pick the Eastern States Horse Show delegates.
3. Definition of Show Rosettes
- a. Shows may award Danish ribbons, show rosettes, or both. Show rosettes are the multi-streamer ribbons usually awarded at a regular horse show. They are colored Blue - 1st, Red - 2nd, Yellow - 3rd, White - 4th, Pink - 5th, and Green - 6th. When awarding show rosettes at a 4-H show, they may be given in addition to the Danish ribbons. The Danish ribbons denote the personal achievement of each individual competitor and the show rosettes place them according to their numerical score, first through sixth. Occasionally the highest scoring rider receives a Red or White Danish ribbon. In this case the show rosettes are still awarded starting with the blue and working down as in any other class, regardless of what color Danish ribbon the competitor receives.
 - b. The awarding of rosette ribbons 1-6 should be given in numerical order 1-6 of the top six highest scores on the judge's card.

4.3 Handiness Class

4.3.1 General

A performance of a sensible well managed free and easy moving horse.

4.3.2 Scoring

Judged on quality of gaits accuracy of required movements, response to rider, manners, disposition and intelligence. Completion of all movements and creativity may be considered.

1. Accuracy and correctness of the movements completed in the pattern as outlined.
2. Completion of all the required movements (elimination is not a consequence of leaving out a movement).
3. Completing the ride within the time limit.
4. Control and responsiveness of horse to rider.
5. Creativity.
6. Overall impression.

4.3.3 Class Procedure

1. Every ride must be to music. Music must be on cassette tape or CD and presented to the show committee at registration labeled with the rider's name and county. Costumes are optional for horse and rider but safety of the horse and rider must be considered. Approved helmets (SEE RULE 1.7; 21.a) and appropriately heeled boots are mandatory. Only tack and equipment used in Equitation Classes are allowed.
2. There is a four minute maximum time limit: At least 12 of the following movements must be completed within the four minutes; more movements are allowed. All judging begins when the music starts and ends at the four minute mark. Riders may also choose to use the Eastern States Exhibition Handiness Pattern(s), but must follow the same procedure outlined here.
3. At least 12 of the following movements must be included (which can be done in any order and combination).
 1. Simple lead change in either direction.
 - *2. Flying Lead* Change in either direction.
 3. Stop.
 - *4. Turn on haunches or rollback.
 5. Extended trot or jog.
 6. Collected trot or jog.
 7. 1/4 turn right, 1/2 turn left, 1/4 turn right.
 8. 1/4 turn left, 1/2 turn right, 1/4 turn left.
 9. Large circle to the left.

10. Large circle to the right.
11. Small circle to left.
12. Small circle right.
13. Back (minimum 3 steps).
14. Extended canter or lope.
15. Collected canter or lope.
- *16. Half pass, shoulder in or leg yield.

* extra consideration will be given for the completion of these movements

4. Pattern must be written AND diagramed (preferably printed or typed) and presented to the show committee at registration.
5. If technical difficulties occur with the music which are beyond the rider's control, it will be at the discretion of the judge whether the rider may re-start.

4.3.4 Disqualifications

1. Time in excess of 30 seconds, or 3 attempts in approaching any obstacle will eliminate the score for the obstacle, and the rider will proceed to the next obstacle.
2. Failure to maintain correct gait where specified will be penalized.
3. Rider will be disqualified for not following exact pattern.
4. Refer to New England 4-H Horse Show Rules and Guidelines, page 18.

4.4 Horsemanship (Equitation class)

Appointments; clean and neat.

Refer to Appendix for scoring.

Tack; clean, supple and properly adjusted

Pattern, include position, communication and control of the horse while performing an accurate pattern. Results are not more important than the form and equitation methods used to do the pattern. In both patterns, wait for judge to acknowledge before beginning pattern.

4.5 Driving Division

4.5.1 General

Open to all driving animals. One equine is shown hitched to a suitable two or four wheel vehicle which must have foot boards and an enclosed front. Racing sulky type of vehicle is not acceptable. Participants are required to report wheel to wheel width of their cart on their entry.

Class size: show management will determine need for dividing classes depending upon ring size, number of entries, size and type of entries in a reasonable manner.

1. Vocal aids - It is permissible for the driver to talk to the animal in a subdued tone of voice. Clucks for starting may be used, however "walk on," "trot," and "whoa" are the more accepted terms. Any tendency by the driver to shout, whistle, or talk loudly to the animal should be penalized. A driver should strive to control the animal's movement with minimum vocal aids.
2. Equipment failure - No entry may leave the arena after judging has begun without permission from the judge and/or ringmaster. If an accident or equipment failure occurs which needs attention or repair, the entry should pull to the center of the arena as soon as possible. Minor adjustments to harness may be made upon permission from the judge. Adjustments or repairs requiring more than 5 minutes will result in dismissal from the ring.
3. Headers or grooms must be qualified 4-H youth. They are allowed but must stand in front of the equine and not touch the animal unless necessary for safety.

4.5.2 Safety

At no time will a bridle be removed before the vehicle is completely unhitched and removed from the horse. Infraction of this rule may result in disqualification at management's discretion.

It is strongly suggested that a second person (first choice - qualified 4-Her, second choice - qualified designated volunteer, third choice - other qualified adult) be present while the horse is being put to and hitched to and unhitched from the vehicle. Also the same consideration should be given to a person to accompany the driver, leading the horse, from stable area to ring.

4.5.3 Tack and Equipment

Any safe harness that includes a hold down for the shafts and a hold back for the vehicle (either nylon or leather) suitable to the type of horse being driven is acceptable. The harness and vehicle must be safe and in serviceable condition. The judge will dismiss any entry he or she feels is unsafe whether due to equipment or

behavior of the animal. Boots or leg wraps of any description are prohibited. Harness bells are also prohibited. Optional - Martingales, checkreins, and blinders.

4.5.4 Appointments

The driver should be neatly dressed, but will not receive extra credit for silks or formal driving attire. An approved equine safety helmet (see rule 1.7; #21.a) for everyone in vehicle and hard soled shoes or boots must be used. Gloves are recommended. Suggested attire would be a suit coat and tie for boys, dressy blouse and skirt or dress pants for girls. Riding attire suitable for any seat is also appropriate. Driving aprons are acceptable. Optional - Whips.

4.6 Reinsmanship

4.6.1 General

A driving class in which entries are judged primarily on the knowledge, ability, and skill of the driver and the communication between driver and horse. Show the horse both ways of the ring at the walk, jog trot, and working trot or alternate gaits. Drivers will be required to rein back. The horse should respond promptly and willingly. When the driver is jogging, both feet should be resting on the stirrups or flat on the floor. The back should be straight, hands held forward no more than chest high, with elbows in a slightly cocked position. The driver should be driving on contact at all times. Reins may be held in one or two hands.

4.6.2 Scoring

To be judged 80% on handling of reins (and whip if used), control, posture, technique, and ability of driver and 20% on condition and fit of harness and horse, proper harnessing and hitching, and neatness of attire.

4.6.3 Tack and Equipment

Refer to 4.5.3

4.6.4 Appointments

Refer to 4.5.4

4.6.5 Class Procedure

Horses will enter the ring counterclockwise at the trot. Show the horse both ways of the ring at the walk, jog trot, and working trot or alternate gaits, reversing across the diagonal and to the inside of entries on the rail. Individual workouts may be required of all or selected entrants at discretion of judge. During individual workouts all entrants will be excused from the ring, with only one exhibitor at a time performing in the ring.

Additional Tests may include:

- a. Backing 4 to 8 steps and returning to place in line.
- b. Perform a circle or a figure eight (crossing the center line twice), evaluating consistency of speed, willingness, and flexing of the horse on the turns.
- c. Turns - within a 30 foot parallel, right and left, evaluating willingness, speed, smoothness.
- d. Mounting - the driver can mount the cart either by the step-on or slide-on method, being sure that control of the horse is always maintained. The ringmaster will serve as header.
- e. Perform at any gait requested by the judge.
- f. Negotiate a simple obstacle such as driving or backing between 2 markers or poles.

In addition, Seniors may be asked to pivot turn with one wheel in place, left or right, at 90 degrees or 180 degrees at judge's discretion.

4.6.6 Disqualifications

Unsafe equipment, unruly behavior of the horse or driver or excessive use of the whip will be grounds for disqualification.

4.7 Disciplined Rail Driving - Horse, Pony or Miniature

4.7.1 General

This class is to show the ability of a highly trained equine. To be shown in a two-wheeled cart.

Judge shall work the entries adequately, but must not overwork the entries. This is not a game or a fault-and-out class and shall not be judged on an elimination basis.

4.7.2 Tack, Equipment and Appointments

Refer to 4.6

4.7.3 Scoring

Judging shall be on the basis of the best overall disciplined rail performance. To be judged on performance, smoothness, obedience and consistency.

4.7.4 Procedure

This class routine shall be to perform work on the rail and will include, but not be limited to:

- a. A flat-footed walk.
- b. Normal trot.
- c. A strong trot (not to exceed twice around the ring).
- d. Starting with a flat-footed walk, through a normal trot to a strong trot.
- e. Stand quietly.
- f. Pivot (Pivot to side pass as though there were a wall in front and behind with one wheel rolling). Pivot not to exceed 90 degrees. Judge may ask for both right and left or either.).
- g. Back four (4) steps.

4.7.5 Disqualifications

Refer to 4.6.6

4.8 Pleasure Driving

4.8.1 General

A pleasure driving class in which entries are judged primarily on suitability of a horse to provide a pleasant drive for a youth. Open to all pleasure driving animals. To be shown at a walk, trot, and extended trot both ways of the ring. Must stand quietly and back readily. Pulling, tossing the head, excessive speed at trot or breaking into the canter and other indications of poor manners will be penalized. It is emphasized that this is a pleasure class and that a good entry is one that will provide a pleasant, responsive drive for a child driver. One qualified 4-Her as an attendant may ride with driver in the vehicle. No more entries are permitted in the ring at the same time than may safely be spaced and worked on the rail. Larger classes must be divided into sections.

4.8.2 Scoring

Emphasis will be placed on manners, suitability as a pleasure driving animal, and way of going in that order. The Pleasure Driving class is judged 60% on manners and performance, 20% on suitability as a child's driving animal, 10% on way of going and 10% on condition and fit of harness and vehicle and neatness of attire.

4.8.3 Tack and Equipment

Refer to section 4.5.3

4.8.4 Vehicle

Refer to section 4.5.1

4.8.5 Appointments

Refer to 4.5.4

4.8.6 Class Procedure

Horses will enter the ring counterclockwise at the trot. All entries will perform the following gaits in both directions of the ring, reversing across the diagonal and to the inside of entries on the rail. Walk - flat, true, brisk, and relaxed. Jog Trot - a slow easy trot or pace on light bit contact. Working Trot - True, square, and brisk but under control at all times. Extreme speed or breaking of gait will be penalized. Equines will be judged according to their breed or type and not against each other; enhanced action will not be preferred over natural gait. All entries to stand quietly on rail and in line up and to rein back willingly. Entries chosen for additional work must be shown both ways of the ring at any gait requested by the judge and may be asked to execute a figure 8. Artificial appliances are prohibited. When asked to line up, one qualified 4-Her as an attendant, without whip, may enter the ring and hold the horse's head. Horses must be asked to back without the attendant's assistance.

4.8.7 Disqualifications

Refer to section 4.6.6

4.9 Driving Handiness

4.9.1 Procedures

Exhibitors ride a course of their own design set to music that must include these 12 required elements: Time is not to exceed 4 minutes.

walk	one small slow circle to the right
jog trot	one small slow circle to the left
road trot	figure 8
halt	one large fast circle to the right
back	one large fast circle to the left
two changes of direction, one left, one right	a 90 degree turn from a halt

4.9.2 Scoring

To be judged 50% on accuracy including inclusion of required elements, execution of pattern submitted, and completion in time allowed, 25% responsiveness of horse, and 25% on smoothness of performance including flexing of horse.

4.10 Obstacle Driving

4.10.1 General

This class tests the skill of the driver, the obedience and handiness of the equine, and the accuracy with which the course is driven.

4.10.2 Tack and Equipment

Breeching or thimbles or securely adjusted wraps are required since a number of obstacles require entrants to back. Width of obstacles unless noted will be 8'3" or 16" wider than track width. Order of go will be from shortest to widest track width.

4.10.3 Scoring

Scored 90% on a fault system as follows:

Faults - first and second refusal, displacing marker, hoof or wheel outside marker, breaking gait, showing an obstacle to the equine

Elimination - three accumulated refusals, receiving outside assistance, taking an obstacle out of order

10% on manners, responsiveness, and smoothness of performance.

4.10.4 Class Procedure

An obstacle course is set up with course posted at least 30 minutes prior to start. Obstacles must be chosen from the following list or ask for similar skills: Note: tennis balls may be placed on top of cones to help determine accuracy.

- a. bridge - must be at least 8' wide
- b. back into a stall, touch bar, drive out; or back between cones and touch a third
- c. walk with wheels between triple rails - right two rails 16" apart (10" at more advanced level)
- d. drive through an L
- e. U-turn with center cone
- f. serpentine between cones to complete figure 8 - cones minimum 30' apart

- g. twist between 3 to 5 cones minimum 25' apart
- h. drive beside a distracting but reasonable trail type object
- i. T obstacle - drive straight past intersection, back into T, reverse direction & drive out (this is an advanced obstacle only to be used with experienced drivers)
- j. trot between 2 pairs of cones making a 10' square
- k. lead in and mount the cart
- l. dismount and lead out

Examples of Obstacles

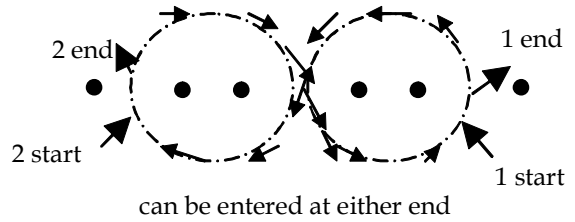
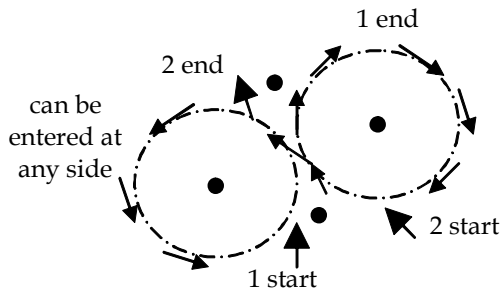
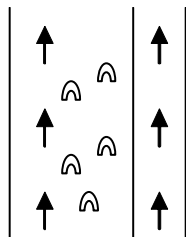
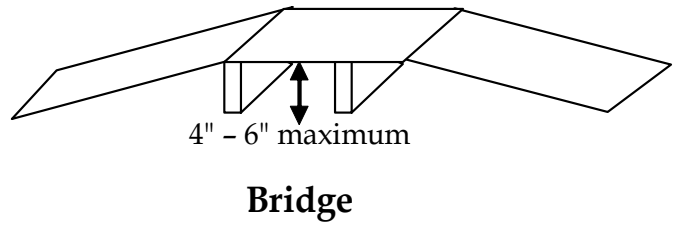
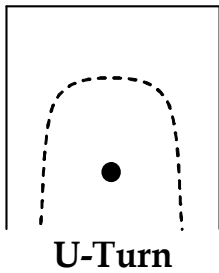
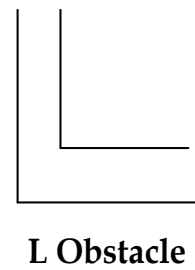
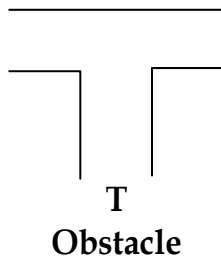
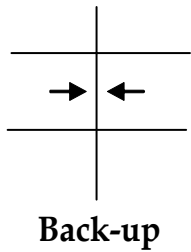
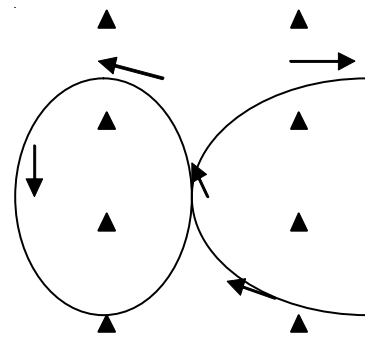


Figure 8



Single Parallel Rails

- ↑ vehicle wheel tracks
- 🐾 horse tracks



Twist with Cones

Appendix A - Uniform Equine Scorecard

40

A. Appearance of Animal

1. Condition 15

- a. Animal should have sufficient flesh, smooth coat, firm muscles, and be useably sound.

2. Grooming 15

- a. Coat should be clean and free of stains. Hair dressing and powder, if used, should be used sparingly.
- b. Mane and tail should be clean and free of tangles.
- c. Hooves should be trimmed and shaped to enable the animal to walk and stand naturally. If shod, shoes must fit and not show undue wear. Clinches should be smooth. Hoof dressing is permitted.

3. Trimming and Braiding 5

- a. Excess hair should be clipped or trimmed from the legs, fetlocks, and around the head. Horse may be totally clipped or not, as exhibitor wishes.
- b. Braiding, if used, should be neat and suitable for the type of horse.

4. Tack 5

- a. Weanlings must be shown in a halter to protect the mouth for future biting. Because of the custom in certain breeds, Western horses may be shown in halter with lead of proper length to insure safe handling. All others are to be shown in a bridle for better control and improved appearance.

10

B. Appearance of Exhibitor

1. Clothes and person should be neat and clean. Suitable riding clothes are preferred. Gum chewing will be penalized.

50

C. Showing Animal in the Ring

1. Leading 15
 - a. Enter leading the animal at an alert walk around the ring in a counterclockwise direction. Walk on animal's left side near its shoulder holding the reins (or lead strap if a

weanling) in the right hand 4-12 inches from the bit (or halter). The remaining portion of the reins (or strap) is held in the left hand.

- b. Animal should lead readily at the walk and trot. This should be done briskly as the judge directs, with the animal's head carried at a height appropriate to the type or use of horse. If working individually, the animal should move on a straight line away from and back to the judge unless otherwise directed.
- c. When making a turn, the horse should be turned to the right - the exhibitor walking around the horse.

- d. Never crowd the exhibitor near you. When behind another animal, maintain a horse's length apart (8-10 feet). When lined up side by side, allow plenty of space between you and the animal next to you.

- e. When changing position in lines: 1) Lead animal straight forward far enough so as not to disturb the horse on either side of you before making a turn. 2) Return to the line by moving around the end of the line and leaning forward either to your original position or to the place directed by the judge. 3) Try to avoid leading your animal between the judge and the animal he is observing.

2. Posing 15

- a. When posing animal, stand toward the front and facing the horse but always in relation to the position of the judge.
- b. The safe areas for the showman are on either side of the horse at the side of the neck or shoulder but not directly in front of the animal. The horse is posed according to type and use, i.e. the American Saddle Horse in the show poses with feet slightly spread and head up, and the Hunter with the head in a natural position and not spread. One hind foot may be slightly in advance of the other.
- c. Face animal upgrade if possible with its front feet on a slight incline.
- d. Never stand between your horse and the judge. He should have an unobstructed view of your animal.

- e. When posed, try to keep your animal still. Support your horse with your hand on his opposite shoulder when the judge picks up a foot or attempts to push him off balance. Always regain your position quickly and without fuss.

- f. When the judge is observing other animals, let yours stand quietly if posed reasonably well.

- g. Do most of the showing with the reins (or lead strap). Never kick your horse's legs into position. Proper use of hands, voice, or whip is accepted.

- h. When working individually, pose the animal so that the judge has a side or 3/4 view; always keeping in mind the slope of the ground and the correct way of turning in that order.

- i. Show your animal at all times, not yourself. Overshowing, undue fussing and maneuvering are very objectionable.

3. Showing Animal to Best Advantage 10

- a. Quickly recognize any conformation faults of the animal you are showing and show it to overcome these faults. Exhibitors may be asked to change horses.

4. Poise, Alertness, and Attitude 10

- a. Keep an eye on your animal and be aware of the position of the judge at all times. Do not be distracted by persons and things outside of the ring.
- b. Respond rapidly to all requests from the judge and officials.
- c. Be courteous and sportsmanlike at all times.
- d. Keep showing until the entire class has been judged and the winners have been announced.

Total

100

Stallions may not be shown except in the year in which they were foaled.

Exhibitors must prepare their own projects for any Fitting and Showmanship Class.

Appendix B - Fitting & Showmanship Scorecard (one judge)

Class No. _____ Entrant No. _____

FITTING			
Condition	15		Comments
Grooming	15		
Trim & Braid	5		
Tack	5		
Appearance Exhibitor	10		
Sub-total			

Class No. _____ Entrant No. _____

FITTING			
Condition	15		Comments
Grooming	15		
Trim & Braid	5		
Tack	5		
Appearance Exhibitor	10		
Sub-total			

SHOWING			
Leading	15		Comments
Posing	15		
Showing to Best Advantage	10		
Poise/Attitude Alertness	10		
Sub-total			
Total	100		Placing

SHOWING			
Leading	15		Comments
Posing	15		
Showing to Best Advantage	10		
Poise/Attitude Alertness	10		
Sub-total			
Total	100		Placing

Danish Scoring 90-100 BLUE
 80-89 RED
 0-79 WHITE

Danish Scoring 90-100 BLUE
 80-89 RED
 0-79 WHITE

FOR USE WITH ONE-JUDGE SCORING

FOR USE WITH ONE-JUDGE SCORING

Appendix C - Fitting & Showmanship Scorecard (two judge)

Class No. _____

Entrant No. _____

Class No. _____

Entrant No. _____

FITTING		Comments
Condition	15	
Grooming	15	
Trim & Braid	5	
Tack	5	
Appearance Exhibitor	10	
Sub-total		

FITTING		Comments
Condition	15	
Grooming	15	
Trim & Braid	5	
Tack	5	
Appearance Exhibitor	10	
Sub-total		

SHOWING		Comments
Leading	15	
Posing	15	
Showing to Best Advantage	10	
Poise/Attitude Alertness	10	
Sub-total		
Total	100	Placing

SHOWING		Comments
Leading	15	
Posing	15	
Showing to Best Advantage	10	
Poise/Attitude Alertness	10	
Sub-total		
Total	100	Placing

Danish Scoring 85-100 BLUE
 70-84 RED
 0-69 WHITE

Danish Scoring 85-100 BLUE
 70-84 RED
 0-69 WHITE

FOR USE WITH TWO -JUDGE SCORING

FOR USE WITH TWO-JUDGE SCORING

Appendix D - Suggested Horsemanship Criteria

SUGGESTED HORSEMANSHIP CRITERIA				
Riders will be judged on position including seat, hands, legs, ability to control and show horse and the communication between rider and horse.				
	Good	Minor Faults	Major Faults	Possible Elimination
hands	quiet light hands positioned above withers	unsteadiness incorrect position	heavy hands constant bumping touching horse or saddle horse's mouth gaping	excessive, inhumane use of aids or equipment
legs	secure position with heel positioned under hip, lower than toe	uneven stirrups motion in legs insufficient weight in stirrups incorrect position	excessive use of legs loss of contact between leg & saddle, foot, & stirrup loss of stirrup	fall of horse or rider
seat	maintains center of balance maintains contact with saddle correctly uses seat to cue	sitting off center sway or round back losing center of balance	excessive body motion popping out of saddle	illegal equipment
control	maintain horse in good form at consistent gaits flying lead changes correct	breaking from gait not standing quietly simple lead changes inconsistent gait or maneuver break of gait at walk or jog	failure to perform requested maneuver missing leads or partial lead changes backing crooked break of gait at lope	incomplete pattern off course or knocking over markers passing on wrong side of markers
precision	performs maneuvers at designated areas accurate and smooth performance pattern	anticipating signals performing maneuvers within one length of marker	performing maneuvers more than one length from marker	incorrect order of maneuvers
obedience	horse willingly and promptly performs maneuvers at request of rider		wringing tail or kicking out tossing head	any infraction covered in rules
appearance	horse, rider and tack clean, neat, properly fitted	dirty parts of horse or tack	dirty horse dirty tack incorrectly fitted equipment	

Additional Forms Needed

You will also need the following forms located at the UNHCE website:

Approval for 4-H Horse Exhibits <http://ceinfo.unh.edu/4H/4HPubs/horsappr.pdf>

4-H Lease Agreement <http://ceinfo.unh.edu/4H/4HForms/rcdlease.pdf>