



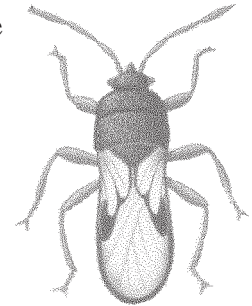
Turf

Hairy Chinch Bug

Pest Fact Sheet **46**

Introduction

Chinch bugs, (*Blissus leucopterus* [Say]), are probably the most destructive pest of home lawns. The adults are small (one-sixteenth of an inch long), black with white wings and red legs. The small nymphs are without wings and appear completely red. These insects damage grass by piercing the plant with their needlelike mouth parts and sucking plant juices. Rainy weather hinders chinch bug development so damage is less likely to occur during wet periods. Chinch bugs prefer to feed on bluegrass and fescues. Chinch bugs prefer sunny areas and lawns with thatch.



adult chinch bug

Life Cycle

Spring: The overwintering adults emerge from sheltered areas and seek grass plants. Egg-laying occurs when temperatures reach 70°F, generally in May.

Summer: The egg hatch into young nymphs which do the greatest amount of damage. Damage to turf is first observed in June. This begins as yellowish areas which soon become dead patches. During warm weather, turf can be damaged quickly as the bug population multiplies. New adults will appear in July. Expect more turf damage when a second generation appears in August.

Fall: Adults of the second generation appear in September and soon seek overwintering sites. Large numbers of adults are often seen around building foundations at this time of year.

Control

Apply a chemical treatment in June as soon as damage occurs. If necessary, make another application in August for the second generation. Sites which normally have chinch bug problems can be treated preventively in May and early June, killing the overwintering adults and young nymphs before they cause significant damage.

Consult your county Extension Educator (see county office telephone listing on reverse side) for specific pesticide recommendations.

Pesticide applications

Granular Insecticide Water lightly after treatment.

Liquid Insecticide At least 2-5 gallons per 1000 ft²; lightly watering in improves control. Liquids work best if ground is wet before treatment.

Sampling for chinch bug

Chinch bug damage appears quickly in hot weather and is often confused with drought damage. It is important to know how to look for chinch bug. Get down on your hands and knees and search the crowns of the grass next to a damaged area. Close observation should reveal chinch bugs. Or place a tin can with both ends removed on the ground and fill with water to float the bugs to the top for observation.

Summary

| | |
|--------------------------------|--|
| Damaging stage | Nymphs, adults |
| Overwintering stage | Adults |
| Number of generations per year | 2 |
| Time of year damage is done | June, August |
| Major symptoms | Yellowish areas which soon become dead patches |

UNH Cooperative Extension County Office Telephone Numbers

| | | | | |
|--|------------------------------------|---|------------------------------------|-----------------------------------|
| Belknap (603) 527-5475 | Carroll (603) 539-3331 | Cheshire (603) 352-4550 | Coos (603) 788-4961 | Grafton (603) 787-6944 |
| Hillsborough Goffstown (603) 641-6060 | Merrimack (603) 796-2151 | Rockingham Brentwood, NH 03833 (603) 679-5616 | Strafford (603) 749-4445 | Sullivan (603) 863-9200 |

Stop! It is always the pesticide applicator's responsibility, by law, to read and follow all current label directions for the specific pesticide being used. If unsure of registration status of a particular pesticide product, contact the NH Division of Pesticide Control at (603) 271-3550. Store pesticides in their original containers in a locked cabinet or shed away from food. Dispose of unused pesticides or empty containers safely, according to NH regulations. If you suspect pesticide poisoning, call the New Hampshire Poison Control Center at 1-800-562-8236.


Stanley R. Swier
Extension Specialist, Entomology

Visit our website: ceinfo.unh.edu
UNH Cooperative Extension is an equal opportunity educator and employer.
UNH, U.S. Dept. of Agriculture and NH counties cooperating.

Revised 1/03