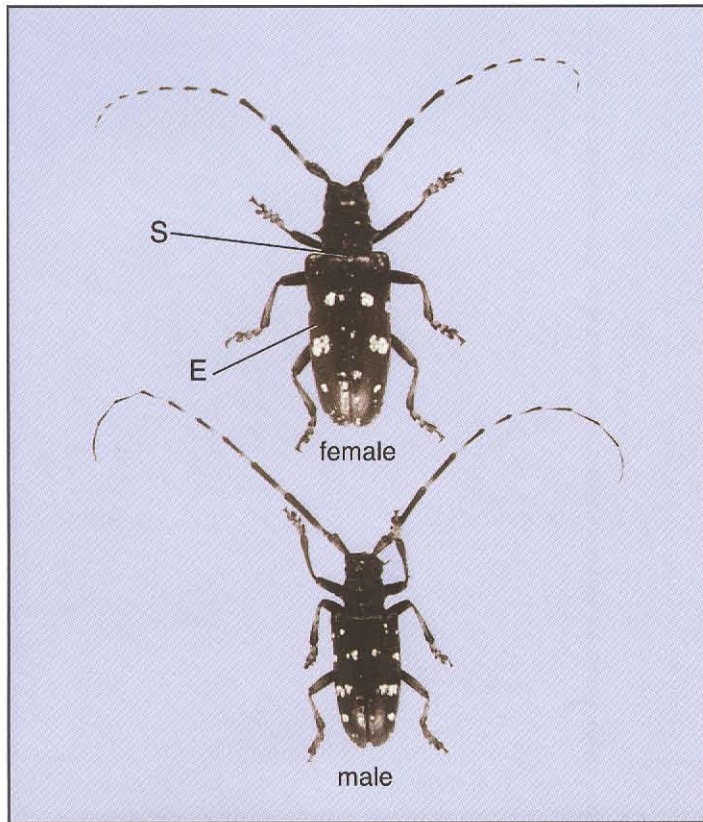


# Asian Longhorned Beetle or Whitespotted Sawyer?



## Asian Longhorned Beetle

*Anoplophora glabripennis* (Motschulsky)

### **Origin and North American Range:**

Native to Asia; immigrant in North America (Brooklyn and Amityville, NY); interceptions of this species have occurred at ports of entry in North America.

**Hosts:** Adults are drawn to recently felled, stressed, or apparently healthy hardwood trees.

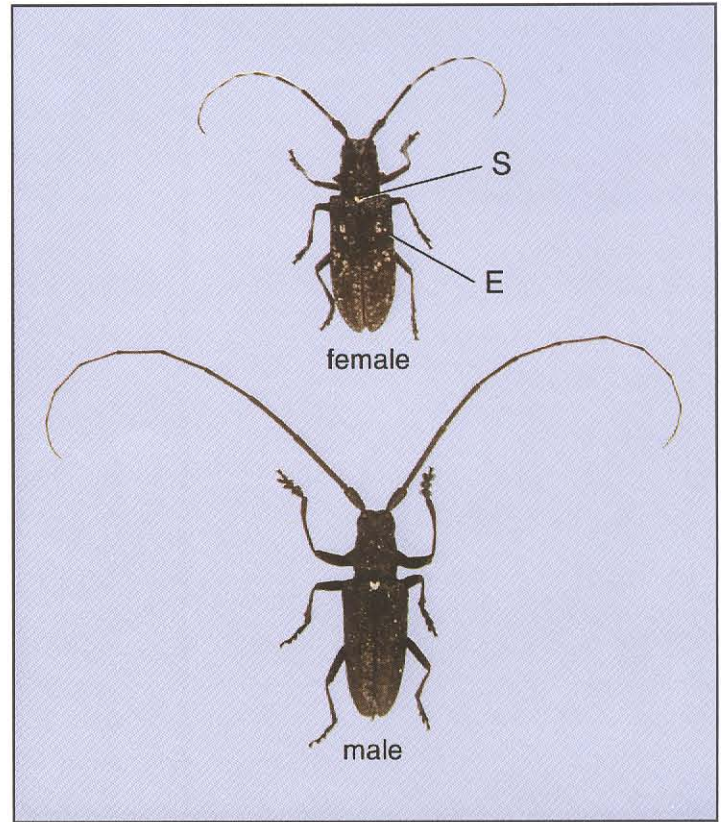
**Overall appearance:** Glossy black; very smooth and finely punctate (having microscopic dimples); 20-35 mm long.

**Elytra (E):** Both sexes have up to 20 irregularly distinct white spots.

**Scutellum (S):** Generally black.

**Antennae:** Segments 3-11 distinctly banded white and black in both sexes;  
Female- antennae usually 1.3 times body length;  
Male- antennae usually 2.5 times the body length.

**Legs:** In both sexes, bluish-white especially on the dorsal surface.



## Whitespotted Sawyer

*Monochamus scutellatus* (Say)

### **Origin and North American Range:**

Native to North America; transcontinental from Alaska throughout Canada (and the Northern United States) and southward to North Carolina in the east and New Mexico in the west.

**Hosts:** Adults are drawn to dying, stressed, or recently felled conifers.

**Overall appearance:** Generally bronzy-black; coarsely and roughly punctate; 15-28 mm long.

**Elytra (E):** Female- generally mottled with whitish patches;  
Male- generally completely bronzy-black.

**Scutellum (S):** Generally white (covered with white or ashy-colored scales).

**Antennae:** Female- faintly banded gray and black; slightly longer than the body;  
Male- all black; much longer than the body.

**Legs:** In both sexes, generally dark or slightly grayish-black overall.



Photographs and descriptions by E. Richard Hoebeke, Senior Extension Associate,  
Department of Entomology, Cornell University.

NA-PR-01-98  
Reprinted August 2002