

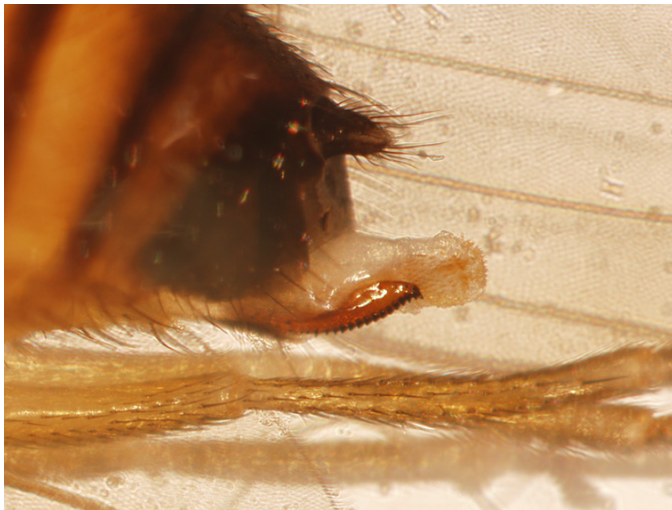
Spotted wing *Drosophila* Confirmed in NH Raspberries Sept 6, 2011

Spotted wing *Drosophila* (SWD), an invasive insect from China & Japan, was confirmed on raspberries in Litchfield, New Hampshire on September 6th. We also have a few in high tunnel tomatoes in Strafford. I have been looking for them with traps in three NH cherry orchards, and 25 blueberry samples from across the state. I haven't significantly sampled raspberries, though. It appears that fruit of raspberries, strawberries, blueberries and cherries are prime targets. Other crops are attacked, such as peaches, plums, grapes, pears and blackberries.

SWD is different from our native vinegar gnats/fruit flies in that it attacks sound, ripe fruit. It doesn't need over-ripe, rotting stuff, because the female has a serrated egg-layer, and can cut right through tough skin.



Top: Female Spotted wing *Drosophila*. Bottom: Male Spotted wing *Drosophila*



Female Spotted wing *Drosophila*

The below link leads to an excellent publication from Michigan State University that discusses how to monitor, and what insecticides work (and don't work).

www.ipm.msu.edu/SWD/SWD-recommendations.htm

Critical: once larvae are inside the fruit, no (legal) pesticide can reach and kill them. Take those fruit and turn them into...say...jam or jelly, or a pie, maybe...and the little maggots may very well float to the top, for a gourmet surprise.

The key to managing this:

- 1) monitor frequently for the adults
- 2) respond rapidly if they surpass your threshold (I'd set mine low)
- 3) if the species is found, apply a pesticide before significant egg-laying can take place. This is discussed in the MSU sheet. They've had this insect for a while.

The NH State Entomologist, Piera Siegert, is putting an alert on the [NH Dept of Agriculture, Markets and food website](#), and will contact the NH Weekly Market Bulletin with information. The photos here of the NH specimens were taken by Cheryl Smith and myself on the afternoon of 9/6/11. The male is the one with a dark spot on each wing. None of our native drosophilids have this characteristic.

We have reports of Spotted wing *Drosophila* having been found in RI, CT and MA over the weekend, but no confirmations yet...that takes time.

Thank you to George Hamilton and Cheryl Smith for helping get the sample to the lab quickly, and for good microscope photos.

-Alan Eaton, Extension Specialist, Entomology