



# GIS for Community Decision Makers 2008

## GIS for Community Decision Makers (12 week workshop)

**Every Thursday - 6pm to 9pm**  
**Sep 25th - Dec 11th**  
(no class on Nov 27)

### Topics covered:

basic GIS concepts  
GIS mapping and analysis  
creating GIS data for your town

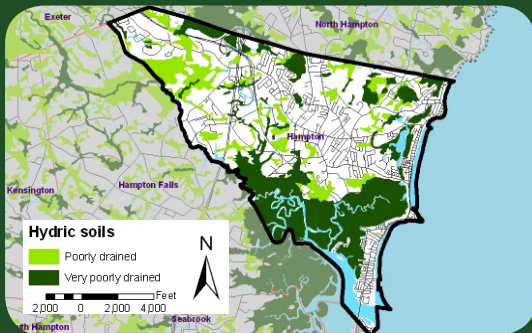
Groundwater & Conservation Lands  
Wildlife Action Plan & Transportation  
Natural Resource Inventories  
Wetlands & Soils & Water Resources

bringing GPS data into GIS  
where to get GIS data in NH  
sharing GIS maps with others

### Software used:

ArcGIS 9.2, DNR Garmin, Google Earth

**\$625 tuition + \$50 lab fee = \$675**



### Skill level: Intensive

This 12-week course is designed for local government officials and others interested in using Geographic Information System (GIS) technology for mapping town resources and as part of the planning process. The course combines learning about natural resource management and community planning with developing skills in ArcGIS 9.2 GIS software. Participants will learn to map natural and societal community assets, as well as, use GIS to conduct suitability analyses. Activities will involve informational lectures on course topics by experts from local, state and federal entities, and hands-on related GIS exercises.

Course content is appropriate for all people interested in using GIS to map community resources, educators, town employees, conservation commissions and planning board representatives. Familiarity with Windows is recommended, but no previous experience in GIS is needed.

### Participants will learn to:

symbolize GIS data; add labels and annotation; query data; use geoprocessing tools: merge, buffer, dissolve; manipulate attribute tables by adding fields, calculating values, and joining tables; import data into ArcGIS 9, design maps using layouts, import GPS data into GIS, work with a wide variety of GIS data layers including: surface water, groundwater, soils, wetlands, transportation, conservation lands, wildlife action plan, develop natural resource inventories, display GIS data in Google Earth, develop GIS data, share GIS maps

### Provided equipment:

Each student will have the use of desktop computer with ArcGIS 9.2 and GPS software during class activities. Comprehensive manuals will be provided for each student for use during the course and to keep as a reference after the workshop.

### Participant projects:

Participants interested in working on an individual project will be provided with GIS data for their area of interest and will be supported in their project work throughout the duration of the course.

## SPACE IS LIMITED - REGISTER EARLY

### Course content info:

Shane at [sbradt@ceunh.unh.edu](mailto:sbradt@ceunh.unh.edu) or 603.862.4277  
or [http://extension.unh.edu/GISGPS/GISGPSTO.htm#TO\\_CDM](http://extension.unh.edu/GISGPS/GISGPSTO.htm#TO_CDM)  
or <http://www.nhti.edu/businesstraining/technical.htm>

### To Register, go to the webpage shown below:

<http://www.ccsnh.edu/concord/businesstraining/registration.html>  
Kathleen at [kmoore@ccsnh.edu](mailto:kmoore@ccsnh.edu) or 603.271.6663

**"When I took your workshop it changed my educational focus (and my life). Your course was well organized and comprehensive."**

*Scott Semmens - Hopkinton High School teacher*

Note: If you have special needs that need accommodation, please contact us 3 weeks in advance of the program date. UNHCE is an equal opportunity educator and employer. University of New Hampshire, U.S. Department of Agriculture, and NH counties collaborating.