

Significant Issues Meeting

June 24, 2009

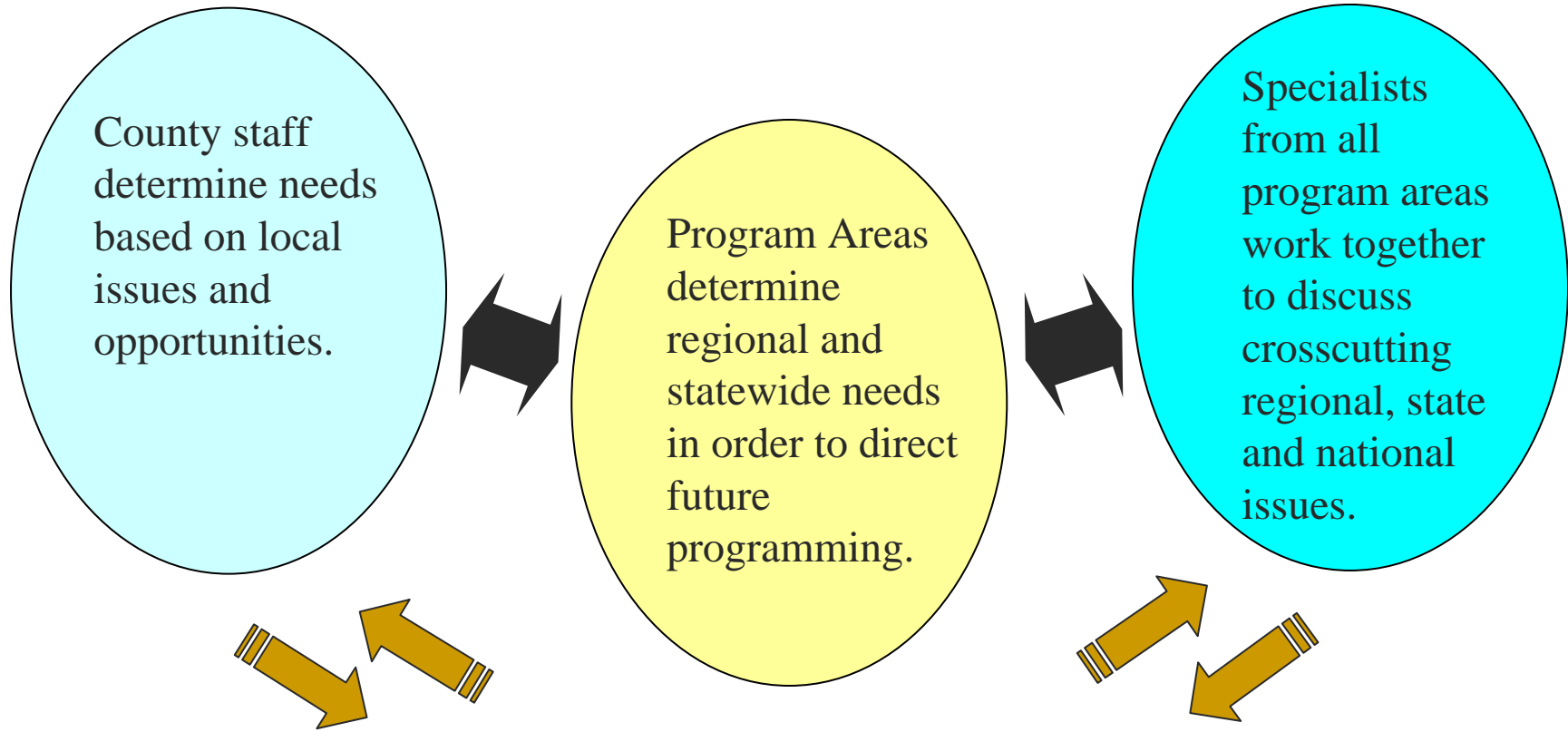


UNIVERSITY *of* NEW HAMPSHIRE
Cooperative Extension

[UNHCE Strategic Plan]

- Goal 1 - ***UNH Cooperative Extension will enhance its responsiveness to significant issues facing youth, families and communities, the state's natural resources and its economy in a changing social and natural environment.***





County staff determine needs based on local issues and opportunities.

Program Areas determine regional and statewide needs in order to direct future programming.

Specialists from all program areas work together to discuss crosscutting regional, state and national issues.

Significant issues are shared organization-wide and with State Advisory Council

SPIT generates a list of ALL issues and, in consultation with Leadership Team, prioritizes issues.

Significant Issues (draft titles)

- High Stress on Community Members, Community Services & Civic Life
- Excessive Reliance on Unsustainable Fuel Systems
- Increasing Rates of Financial Instability among Families, Individuals & Seniors

[Significant Issues (continued)]

- Increasing Rates of Obesity & Rising Health Care Costs
- Lack of Support & Infrastructure for Small Businesses
- Land Use Patterns that Threaten Natural Resources & Rural Character

[Intent]

- NOT to identify issues we are already addressing
- **Identify the highest priority issues**



[Premise of Significant Issues]

- Everything we do does NOT have to fit!

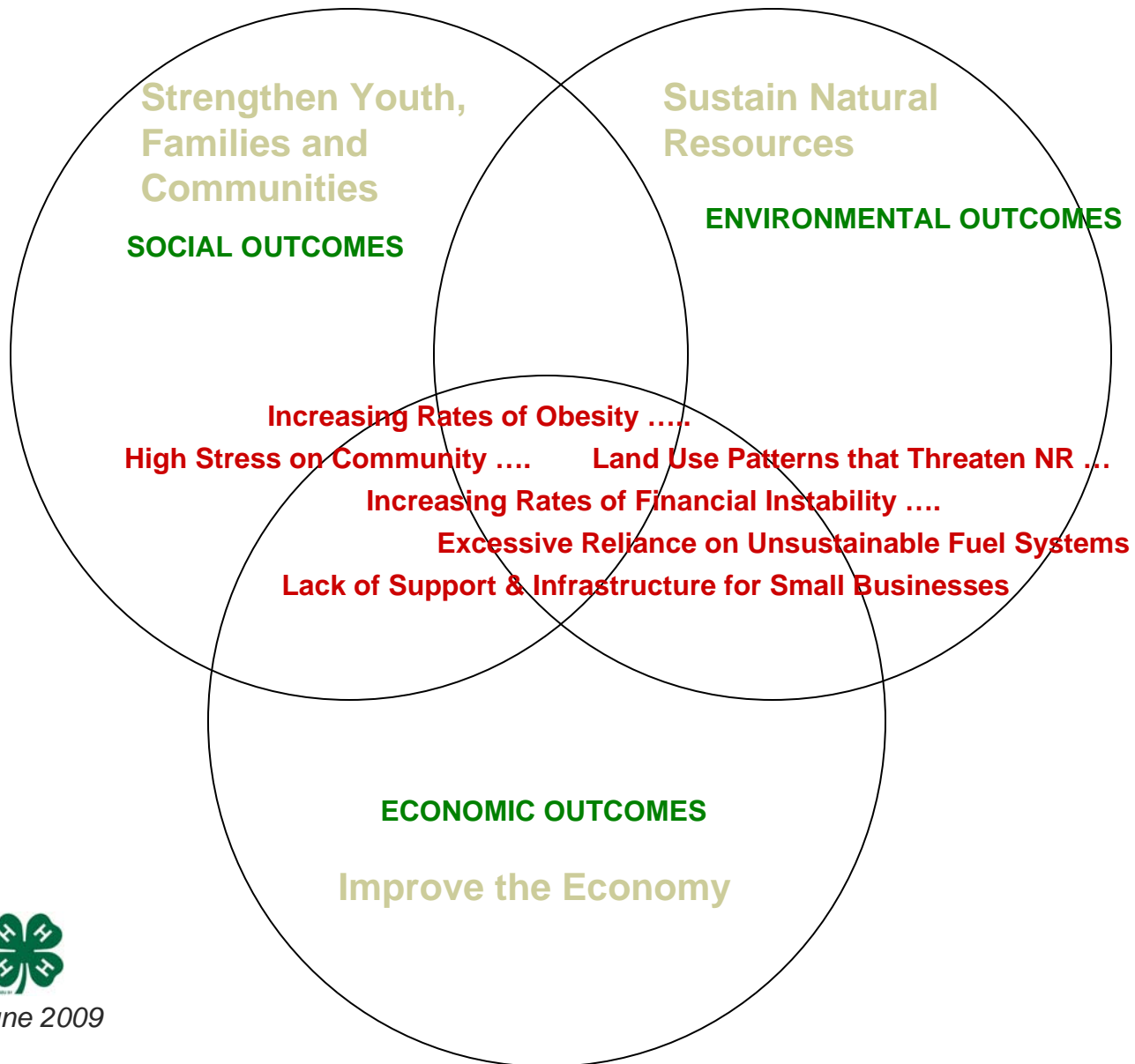


[Staff impacts]

- Re-tooling
- Professional development
- Grants
- **No intention to make staff cuts based on lack of work in these significant issues.**



UNHCE MISSION, **OUTCOMES** & **SIGNIFICANT ISSUES**



Adapted from:



Paula Gregory, June 2009

[Next Steps]

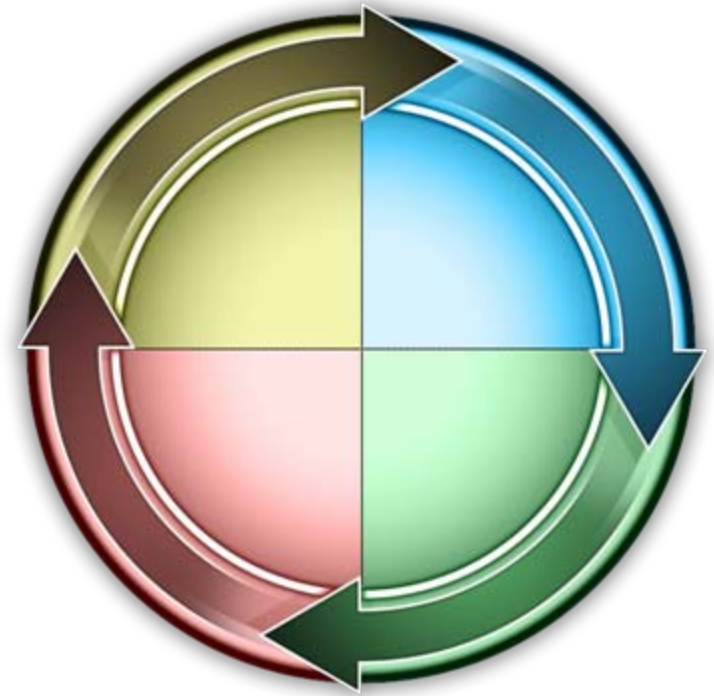
- Staff provide input



- Final Significant Issue Statements by Sept 1

[Final Drafts:]

- Comprehensive
- NOT a new issue



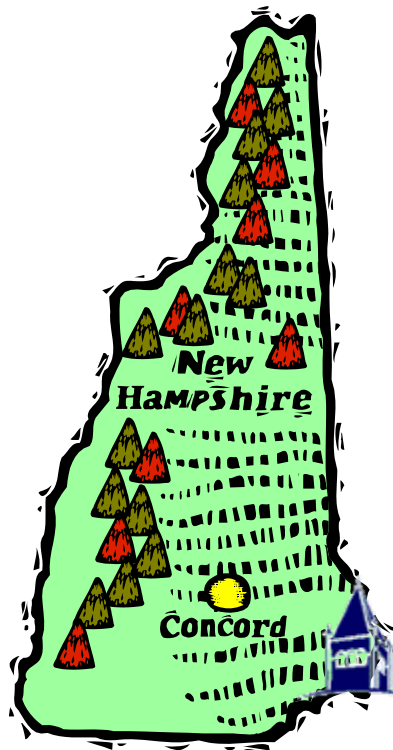
[September, 2009]

- “Teams” begin to form



- Identify what we're already doing
- Reframe the 2010 POW

[2010 and beyond]

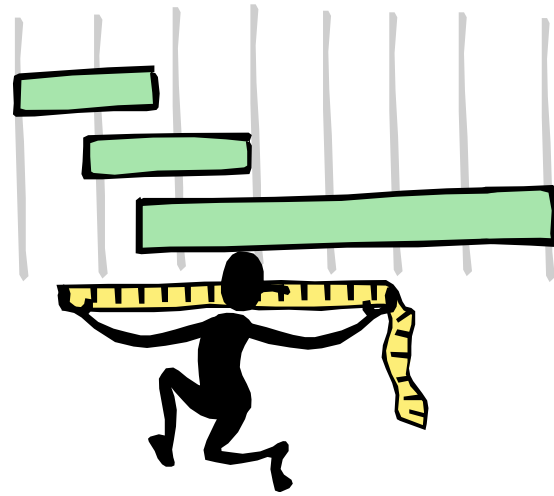


UNIVERSITY
of NEW HAMPSHIRE

- New projects
- Modified programs
- Grant opportunities
- Campus and agency partners

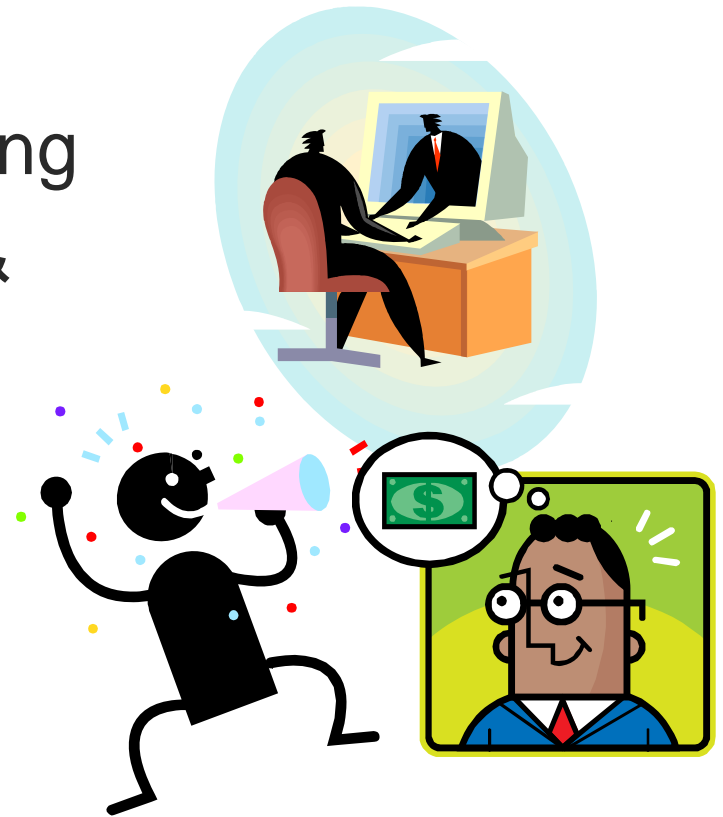
[2010 and beyond]

- Measure outcomes
- Report our progress



Support for Significant Issues

- Technology
- Public Relations/Marketing
- Program Development & Evaluation
- Grant Development



[What we would like of you..]

- Provide input
- Volunteer!
- Consider current expertise
- Talk to your Program Leader



Questions?

