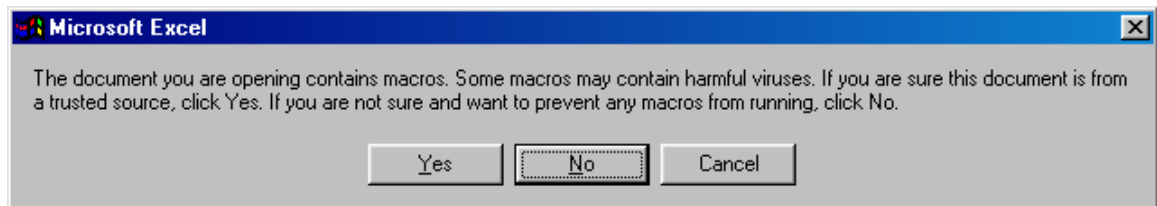
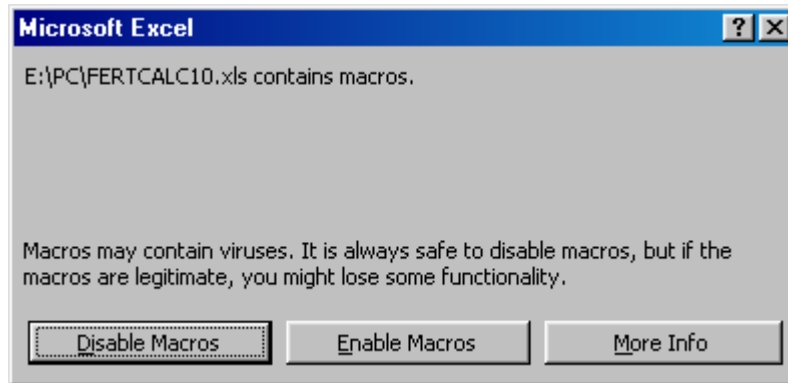


GroCalc©

Below are common problems that you may run into. The potential problem is followed by the suggested solution.

PROBLEM 1

When FERTCALC or PGRCALC open you will get a message similar to these

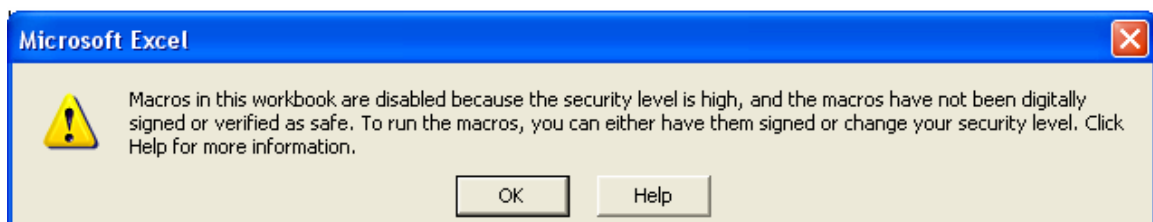
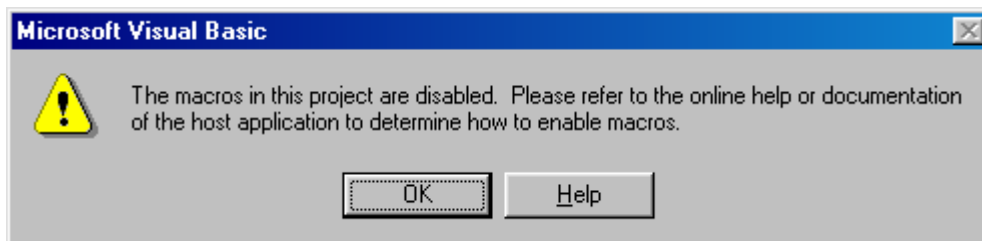


SOLUTION

1. Click either “Enable Macros” or “Yes”

PROBLEM 2

One of the following messages appear:



SOLUTION

1. Close the calculator you are trying to use

2. Open Microsoft Excel
3. Select “Tools” from the Main Menu
4. Select “Macro” (if “Macro” is not visible, click the arrow at the bottom of the menu to reveal more menu options)
5. Select “Security...”
6. Select the bullet next to “Medium”
7. Click “OK”
8. Open the desired calculator as directed

PROBLEM 3

FERTCALC will not make calculations for fertilizers not containing nitrogen, phosphorus, or potassium (ex. Magnesium sulfate)

- FERTCALC makes calculations based on N, P, or K, depending on the bullet you choose. For fertilizers such as Magnesium sulfate you need to “trick” FERTCALC

SOLUTION

1. Enter the analysis for one of the elements your fertilizer contains into the “nitrogen” cell as well as its own respective cell
2. Be sure to select the bullet “Calculate for Nitrogen”
3. Once FERTCALC has performed the calculation make sure the ppm in the Nitrogen box is the same as the ppm for your desired element

PROBLEM 4

The “Total Calculated PPM” values appear as “#DIV/0!”

SOLUTION

1. You must input percentages of elements for each injector even if the injectors are using the same fertilizer.
2. If you are using the calculator with the acid injector option, you must also enter values for the acid injector at the very bottom of the calculator

PROBLEM 5

The values in the “Nitrogen Breakdown” appear as “#DIV/0!”

SOLUTION

Be sure you click on the navigation button “N Forms” and enter the needed information

PROBLEM 6

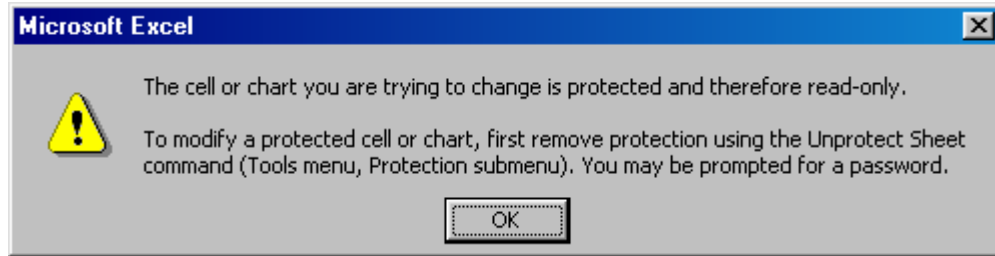
When information is entered into the calculator no calculations take place

SOLUTION

After entering information into a cell on the calculator be sure you press the “Tab” key or the “Enter” key (on a PC) or “Return” key (on a Mac)

PROBLEM 7

When a cell within Excel is selected the this message appears:



SOLUTION

Many of the cells in the calculator are restricted; you are only allowed to enter information into those cells where information from the grower is needed