



Maynard & Audrey Heckel Award Recipient

Congratulations to Julia Steed Mawson, this year's recipient of the Maynard and Audrey Heckel Extension Educator Fellowship Award, for her New Hampshire 4-H Common Ground Project. Julia receives a \$1,000 award to "support/enhance the continued work of the chosen fellow within UNH Cooperative Extension" as designated by the Heckels.



The NH 4-H Common Ground Garden Project (NHCGGP) was developed to serve youth, families, elders and the community through its four initiatives:

- * **The 4-H Green Thumb Team Junior Master Gardener project** - providing weekly opportunities for inner city youth to plan, plant, tend and harvest their gardens while learning about gardening science through hands-on, minds-on learning experiences.
- * **Elders On the Grow** - providing support for the development of projects that integrate seniors, nursing home residents, youth and families with gardening experiences.
- * **Rooting for Families** - supporting the development of backyard and community gardens for families including the Pine Street Community Garden as well as providing support with other similar efforts in the Greater Manchester.
- * **Shared Harvest** - donating the produce from the 4-H Children's Teaching Garden as well as encouraging individuals to Plant a Row for the Hungry to support the NH Food Bank.

Since 1998 the Manchester 4-H gardening program has evolved into the NH 4-H Common Ground Garden Project serving over 8,000 youth, families, elders and others within the community. Through the weekly garden programs, trainings and informational sessions, university students and volunteers have become mentors to the 300 plus youth annually. While learning the importance of generosity, the youth have donated nearly 10,000 lbs of produce to the NH Food Bank. Equally important are the attitudes, commitments and feelings from the heart that underscore these gardens as special places. They become common ground for people of different ages, cultures and backgrounds to connect and build future memories while experiencing the outdoors as a safe place to play and be.

NON-PROFIT
ORGANIZATION
U.S. POSTAGE PAID
PERMIT NO. 23
GOFFSTOWN, NH

34th Annual

NH SHEEP & WOOL FESTIVAL

May 8 & 9, 2010



Hopkinton State Fairgrounds
in Contoocook, NH

Sponsored by
The New Hampshire Sheep &
Wool Growers' Association
For more information:
www.nhswga.org

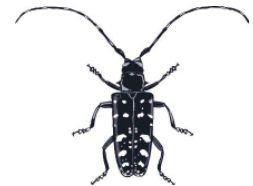
Location: Hopkinton State
Fairground in Contoocook NH
Admission: \$5/day per person;
\$4 for seniors; Children
under 12 are free.
Directions: Take exit 7 off I 89.

There are a number of
events for you to enjoy:

- Educational Programs
- Special Workshops
- Dog Herding Demos
- Fleece to Shawl Presentation
- Sheep Dog Trial
- Fiber Show
- Youth Sheep Show
- Fleece Show & Sale
- Vendor Auction
- Commercial Exhibitors

For a Festival Book,
call Jolee Chase at
603-641-6060 or
visit the web site:
www.yankeeshpherd.com

Asian Long Horned Beetle:



Portrait of a Tree Killer

By Margaret Hagen,
Extension Educator, Agricultural Resources

Forest health experts fear that an exotic pest called the Asian Longhorned Beetle (ALB), which made its way into the U.S. in wooden packing crates from China more than a decade ago, could move into New Hampshire and devastate our forest landscape. To prevent an infestation state agencies are relying on citizens to help identify and report this pest. "With nearly five million forested acres in New Hampshire, we believe ordinary citizen observers are the most important key to identifying this potential threat," says UNH Cooperative Extension entomologist, Dr. Stan Swier.

Continued on page 4...see ALB

UNH Cooperative Extension
Hillsborough County
329 Mast Road
Goffstown, NH 03045

What's Happening in Extension?

Agriculture

Small Farm Equipment Demonstrations

Date: Friday, April 30, 2010

Time: 1 pm - 4 pm

Location: Alyson's Orchard, Walpole NH

For more information, contact [Carl Majewski](#), Extension Educator Agricultural Resources, Cheshire County at 603-352-4550.

Date: Saturday, May 1, 2010

Time: 9 am - 3 pm

Location: UNH Kingman Farm, Madbury NH

Two small equipment demonstrations are scheduled. Walk behind tractor with various attachments will be displayed and demonstrated along with educational presentations.

For more information, contact [Geoffrey Njue](#), Extension Educator, Agricultural Resources Strafford County at 603-749-4445.

Tree Fruit Growers Twilight Meeting

Date: Wednesday, May 12, 2010

Time: 5:30 pm - 8 pm

Location: Carter Hill Orchard, 73 Carter Hill Road, Concord NH

Sponsored by The New Hampshire Fruit Growers' Association. UNH Cooperative Extension Specialists will be discussing pest management options and orchard management. Pesticide Applicator recertification credits will be available. For more information, call [George Hamilton](#) at 603-641-6060.



NOFA-NH Herbal Network Herb and Garden Conference

Date: Saturday, May 22, 2010

Location: Pine Hill Waldorf School, Wilton NH

Workshops will include herbal product making, organic gardening, flower essences, permaculture, and more. For information, see <http://www.nofanh.org> or contact Eleanor Moyer at 603-233-4317 or herbdays@nofanh.org.

The Why's and How's of Using Drip Irrigation – for Vegetable and Fruit Growers

Date: Wednesday, May 26, 2010

Time: 5:30 pm - 8 pm

Location: Brookdale Fruit Farm, Hollis NH

Drip irrigation options and strategies for vegetable and fruit production will be reviewed. For more information, contact [George Hamilton](#) at 603-641-6060.

Zone Tillage and Soil Health Farm Twilight Meeting

Date: Wednesday, June 2, 2010

Time: 5:30 pm - 7:30 pm

Location: Wilson Farm, Litchfield NH

Sponsored by The New Hampshire Vegetable and Berry Growers' Association. Jude Boucher from UConn Extension will discuss deep zone tillage, and Wilson Farm will be demonstrating the use of zone tillage equipment. UNH Cooperative Extension Specialists will be discussing pest management options and production management. Pesticide Applicator recertification credits will be available. For more information, call [George Hamilton](#) at 603-641-6060.

Tree Fruit Growers Twilight Meeting

Date: Wednesday, June 9, 2010

Time: 5:30 pm - 8 pm

Location: DeVlyder's Farm, 563 Pleasant Valley Road, Wolfeboro NH

Sponsored by The New Hampshire Fruit Growers' Association. UNH Cooperative Extension Specialists will be discussing pest management options and orchard management. Pesticide Applicator recertification credits will be available. For more information, call [George Hamilton](#) at 603-641-6060.

Greenhouse IPM Twilight Meeting

Date: Thursday, June 10, 2010

Time: 5 pm - 8:30 pm

Location: Wayside Farm, 506 Whiteface Road, Sandwich NH

This meeting will focus on Greenhouse IPM with an emphasis on the use of biological controls in the greenhouse. For more information, contact [Geoffrey Njue](#) at 603-749-4445 or geoffrey.njue@unh.edu.

Hillsborough County Conservation District Annual Meeting

Keep Local Farms

Date: Tuesday, May 18, 2010

Location: Milford Town Hall

Time: 6:30 pm - 9 pm

Sponsored by Hillsborough County Conservation District and presented by Lorraine Merrill, NH Commissioner of Agriculture. The Keep Local Farms initiative is to support New England's dairy farms. Dairy farming is a cornerstone of the New England landscape and agriculture. Dairy cattle support the lion's share of New Hampshire's actively farmed land. The state and region's supply of fresh, local milk is at risk. People can find out how they can participate in this effort. For more information, contact [Kerry Rickrode](#) at 603-673-2409 or kerry.rickrode@nh.nacdn.net.

UMass Turf Research Field Day

Date: Wednesday, June 16, 2010

Time: 8:30 am - 1 pm

Location: UMass Joseph Troll Turf Research Center South Deerfield, MA.

Research Field Day participants will have the opportunity to meet and speak with UMass staff and to view projects underway. Turf research includes studies on the biology and integrated management of turf-damaging insects, short and long-term weed management, pesticide exposure, fertility, drought management, as well as a range of National Turfgrass Evaluation Program fine turf trials. Field Day will also feature displays and demonstrations from turf industry vendors. A barbecue lunch will be served, and pesticide recertification contact hours will be available for all New England states. For more information, contact [Mary Owen](mailto:MaryOwen@umext.umass.edu) at 508-892-0382; mowen@umext.umass.edu or [Jason Lanier](mailto:JasonLanier@umext.umass.edu) at 413-545-2965; jdlanier@umext.umass.edu.



Tips from the NH Outside 2010 Calendar

May

- ☞ Providing eggshells deters blue jays from eating house paint.
- ☞ Till soil when it's dry and crumbly, not wet.
- ☞ Straw mulch keeps strawberries clean and controls weeds.

- ☞ Remove seed stalks from rhubarb.
- ☞ Vegetables prefer a soil pH of 6 to 7.

June

- ☞ Locate vegetable gardens away from septic systems.
- ☞ Take a hike and look for wildflowers.
- ☞ Brighten up deck with containers of annuals.
- ☞ Clean birdbaths every few days.
- ☞ Plants need at least 1 inch of water/week.

Forestry

Managed Forests Making Clean Water

Date: Saturday, May 15, 2010

Time: Tours start at 8 am

Location: Currier Museum of Art 150 Ash Street, Manchester NH

Cost: \$35 per person; Children 12 & under: \$10 per person. For more information, call NHTOA at 603-224-9699 or visit their website at: www.NHTOA.org.

Farm Tractors for Forestry

Date: Saturday, May 22, 2010

Time: 8:30 am - 11:30 am

Location: 520 Lake Shore Drive, Manchester NH

Cost: \$10 for NHTOA/NHTHC members; \$15 for non-members. For more information, call NHTOA at 603-224-9699 or visit their website at: www.NHTOA.org.

Caring For Your Forest Workshops for Landowners

Each workshop is offered on the same day in two locations.

Location: Beaver Brook Association, Brown Lane Barn

53 Brown Lane, Hollis NH

Location: UNH Cooperative Extension 629A Main Street, Lancaster NH

For more information about registration, call [Debra Anderson](mailto:DebraAnderson@unh.edu) at 603-862-1028.

Tree and Shrub ID

Date: Friday, June 4, 2010

Time: 12:30 pm - 4:30 pm

Chainsaw Safety for Weekend Woodcutters

Date: Friday, June 11, 2010

Time: 12:30 pm - 4:30 pm

Cutting Firewood from Your Woodlot

Date: Friday, June 18, 2010

Time: 12:30 pm - 4:30 pm

Selling Timber? Do It Right!

Date: Friday, June 25, 2010

Time: 12:30 pm - 4:30 pm

Open House and Conservation Field Day at Mason Brook Nursery

Date: Saturday, June 5, 2010

Time: 9 am - 4 pm

Location: Mason Brook Nursery at the Corner of Routes 31 and 124 in Mason NH. Join UNH Cooperative Extension educators for nature walks, tree seedling planting demonstrations, answers to insect and disease questions, and gardening answers. For more information, call 603-878-4512.

What's Happening in Extension?

4-H NEWS



Operation: Military Kids seeks donations for Hero Packs™

UNH Cooperative Extension 4-H Operation: Military Kids (OMK) program is seeking donations to fill Hero Packs. The hero backpacks are filled with fun mementos and items designed to help connect military youth with their deployed family member. The program is calling on all businesses, organizations, churches and caring citizens to donate items such as photo albums, scrapbooks, stationary, pens, journals, stamps and stickers to fill 2000 Hero Packs. OMK is a nationwide youth community service effort to support and encourage children of deployed parents. For more information or to donate, call Charlotte W. Cross or Jody Duddy Jackson at 603-862-0876. Donations can also be delivered to Hillsborough County Extension Office located at 329 Mast Road, Room 101, Goffstown NH.

For more information, check out the website at:
http://extension.unh.edu/4H/4H_OMK.htm.



Tom Fairchild Friend of 4-H Golf Tournament May 14, 2010

Come join the fun at Candia Woods Golf Links for a great day of golf and fun while supporting the fundraising efforts of the 4-H Foundation of New Hampshire. The cost for a team of four is \$400; an individual is \$125. For more information or to learn how you can be a sponsor you can go to the web site (<http://extension.unh.edu/4H/4HFoundn.htm>).

State Activities Day will be held on June 5, 2010 in Durham at the UNH Memorial Union Building. The public is invited to attend. If you would like information or directions, please call the 4-H office at 603-641-6060 or email jolee.chase@unh.edu.

Hillsborough County 4-H Activities Day

4-H County Activities Day was held on March 20, 2010 at the Milford Middle School. There were over 100 youth, leaders and volunteers involved in the success of this year's event. Thank you 4-H leaders, members, volunteers, and parents for all of your help and support.

What a great job!

The following members qualified to go to State Activities Day: (Must be Seniors 12 or older).

Photography:

Twenty nine photos were entered in the photography competition. The three photos chosen for state were taken by Paige Tuttle, Briana Stoyale and Dan Makowski, members of the Hoofbeats. Honorable Mention (for photos taken by members under 12): Brittney Sooner (Drop Spindles), Cambria Wozmak (Busy Beavers), and Rebekah Hardwick (Farming Fun).

Posters:

Thirty members entered the poster competition. The three posters chosen for state were done by Madeleine Bergeron (Hoofbeats), Molly Harris (Manes to Tails) and Briana Stoyale (Hoofbeats). Honorable Mention posters (done by a member under 12): Monique Sirois (Mini Hoofbeats), Jacob Richardson (Goats R Us), and Ryley Walden (The Adventurers).

Demonstrations/ Illustrated Talks:

Fifteen seniors, seven juniors and two Cloverbuds participated. Seniors chosen for state: Quincy Raymond (Independent), Hannah Bailey (Thumpers), Emmett Craggy (Independent), Emily Bailey (Thumpers), Nina Hedberg (Thumpers), Dana DeMore, (NH Cluckers), Laura Santer (NH Cluckers), and Dan Makowski (Hoofbeats). The top Junior Demonstrations/ Illustrated Talks were done by Natalie Lewis (Silver Stirrups), and Abbie Brooks (Drop Spindles).

Vying for a spot on the National Horse Round-Up Team going to Louisville, Kentucky in November are Liam Cashin (Hoofbeats), Sarah Clements (Hoofbeats), Cody Griffin (Apple Valley), and Kristen Paquette (Apple Valley).

Action Exhibits:

Twelve Senior Action Exhibits, three Junior Exhibits and two Cloverbuds participated. Seniors invited to state: Jordan Springmann (Saddlehackers), Rachel Springmann (Saddlehackers), Elizabeth Fontaine (Saddlehackers), Travis Cook (Goats R Us), Maddy Bergeron (Mini Hoofbeats) Emily Harris (Manes to Tails), Ethan Craggy (Thumpers), Kristin Hirst (Thumpers), Samantha Patch (Busy Beavers), Lillian Zimmermann (Busy Beavers), Elyse Morano (Silver Stirrups), and Jessica Ryan (Saddlehackers) and Kianna Couture (Saddlehackers). The top Junior Action Exhibits were done by Jarrett Patch (Busy Beavers), Hannah Welch (Saddlehackers) and Brittney Spooner and Abbie Brooks (Drop Spindles).

Public Speaking:

Three public speakers, all seniors, chosen for state are: Sarah Koski (Drop Spindles), Victoria Dow (Silver Stirrups), and Emmett Craggy (Independent).

Vying for a spot on the National Horse Round-Up Team going to Louisville, Kentucky Rachel Crinklaw, (Apple Valley), with her speech "*Thoroughbred Racing, The Tale of Eight Bells*".

Fashion Revue:

Seven members and one cloverbud participated this year. Chosen for state for sewing and judging: Sarah Koski (Drop Spindles), Samantha Patch, and Lillian Zimmermann (Busy Beavers). Top Intermediate member not old enough for state: Rebecca Lehmann (Drop Spindles). Top Novice sewer is Jarrett Patch (Busy Beavers).

Senior Fashion Selections:

Eight members and three cloverbuds participated this year. Chosen for state: Anna Barlow (Souhegan 4-H), Ilona Rolfharmre (Souhegan 4-H), and Jane Koski (Drop Spindles). The top junior member not old enough for state: Monique Sirois (Mini Hoofbeats).

Congratulations to everyone who participated in this outstanding county event.

It's not too early to begin planning for next March. **See everyone and more back next year.**



Brianna Stoyale and Paige Tuttle would like to announce the 2010 Youth Benefit Horse Shows which will be held at the 4-H Youth Center in New Boston. The shows are sponsored by the Hillsborough County 4-H Horse Council and the Hillsborough County 4-H Foundation, Inc.

Show dates are May 23, 2010 and October 17, 2010. For a class list visit: www.extension.unh.edu or call 603-641-6060. The show is open to all youth 8 and older as of 1/1/10 and adults. You do not have to be in 4-H to participate, but you must wear an ASTM approved helmet with chinstrap attached while riding on the grounds.

Everyone is welcome!

4-H Animal Approval Forms Reminder

All dog and horse approval forms are due in the 4-H office by May 1, 2010. Horses trying to go to the Big E were due April 1, 2010. Beef heifers going to the Big E are also due May 1, 2010. Sheep, goats, swine, rabbits, poultry & non Big E beef animals are due in the office by June 15, 2010. Approval forms can be found on the UNH web site www.extension.unh.edu. If you need the forms mailed to you call the 4-H office at 603-641-6060.



Rebekah and Rachel Hardwick remind all of the 4-H members who want to show their animals at the 4-H Fairs this year to check the dates when your animal approval forms are due at the 4-H office in Goffstown. For more information please visit www.extension.unh.edu.



4-H Family Fun at the Ballpark!

with...

The NH Fisher Cats and the 4-H Foundation of NH



Join us at Merchantsauto.com Stadium in Manchester on August 8, 2010 for **New Hampshire 4-H Day**.
Game time is 1 pm.

Tickets are \$8.00 each (children under 3 are free).
Three dollars from each ticket sold goes to support the 4-H Foundation of NH.

Come join other New Hampshire 4-H families and friends for a **FUN**raising afternoon!

Name: _____
 Address: _____
 City: _____ State: _____ ZIP: _____
 Phone: _____

of Tickets at \$8 each: _____ = \$ _____ enclosed

To purchase tickets, please complete the form above and mail with payment to: UNH Cooperative Extension, 329 Mast Road, Room 101, Goffstown, NH 03045.

Hillsborough County
 329 Mast Road
 Goffstown, NH 03045
 603-641-6060
 FAX 603-645-5252

Education Center
 200 Bedford Street
 Manchester, NH 03101
 877-398-4769
 Fax 603-629-9998
<http://extension.unh.edu>

Newslines Editor
 Michael Koski

Designer
 Maggie Decker

County Office Administrator
 Daniel Reidy

Support Staff
 Maggie Decker
 Pam Doherty
 Janell George
 Holly McKinney

Mission Statement
 "UNH Cooperative Extension provides New Hampshire citizens with research-based education and information, enhancing their ability to make informed decisions that strengthen youth, families and communities, sustain natural resources, and improve the economy."

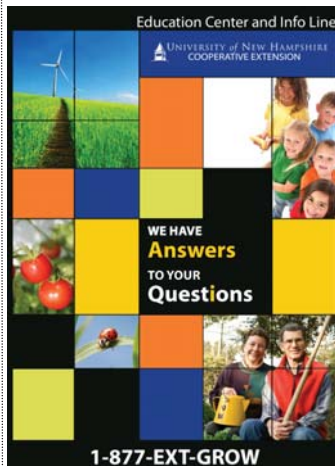
 UNIVERSITY of NEW HAMPSHIRE
 COOPERATIVE EXTENSION



Energy Answers
 Home Energy questions answered

Call Toll free 1-877-398-4769
 or
answers@unh.edu

Education Center and Info Line



UNIVERSITY of NEW HAMPSHIRE
 COOPERATIVE EXTENSION

WE HAVE
Answers
 TO YOUR
Questions

1-877-EXT-GROW

ALB...continued from page 1

To help teach people how to recognize the adult Asian longhorned beetle and signs of its presence, educators from Hillsborough County Cooperative Extension have been holding free educational meetings around the county. So far meetings have been held in Manchester, Hollis, Nashua and Lyndeborough. Upcoming meetings are scheduled for Nashua, Mason and other towns. In addition to a question and answer session, those attending learn how to scout for and report potential beetle sightings, how ALB could impact New Hampshire's forest and nursery industries, how to prevent the movement of ALB and how other states are coping with ALB infestations. To schedule a meeting in your town call Margaret Hagen in the Goffstown office at 641-6060.

Beetle not yet found in N.H.

"So far, we haven't found ALB in New Hampshire," Swier says. "But in the summer of 2008, the beetle was discovered in Worcester, Massachusetts. State and federal officials have mounted a massive eradication program there, expected to last many years and to cost tens of millions of dollars." To date, more than 26,000 trees have been taken down in the Worcester area. With Worcester just 40 miles from New Hampshire, state and local officials are very concerned. The concern is so great that the NH Division of Forests and Lands conducted surveys in the summer of 2009 in Manchester, Nashua and Portsmouth, searching for signs of ALB. Fortunately, no signs of the insect have turned up in New Hampshire. First discovered in Brooklyn in 1996, the beetle turned up in other New York sites, New Jersey, Chicago, and Toronto before being discovered in Worcester.

Beetle behavior

"The female ALB chews holes in the trunks and branches of many hardwood species--especially maples, but also birch, elm, ash, poplar, willow, horsechestnut, and many more--to lay her eggs," says Swier. "The eggs hatch, and the larvae excavate large galleries inside the tree, disrupting sap flow, weakening and eventually killing the tree. ALB attacks many hardwood trees, but is most common in maple and birch." Larvae spend the winter deep inside the tree's heartwood. Adult beetles emerge from the tree in spring and feed on twigs and leaves before mating and laying eggs for the next generation. The adult beetles are most commonly seen from May through September. An adult Asian longhorned beetle has the following key characteristics that help to identify it:

- The body is between 1.0 and 1.5 inches in length
- The body is a shiny jet-black color reminiscent of patent leather
- The back of the insect has many

crisp, white spots of various sizes

- When alive, the feet of the beetle are a bluish color
- The antennae are as long or longer than the length of the body
- The segments of the antennae alternate between white and black in color

Beetle threatens forest values

"New Hampshire's 4.6 million forested acres provide the scenic natural backdrop for the quality of life we all enjoy," says Swier. "Our timber industries are collectively worth \$2 billion and support 21,000 jobs. Forests also help protect our water quality, prevent flooding, provide wildlife habitat, give us our maple syrup industry, and support many recreational activities for both tourists and residents alike."

"Because the beetle attacks many different tree species, scientists fear an infestation could have long-lasting negative impacts on the entire forest ecosystem if it became established over a large area," Swier says.

Prevention: first line of defense

"Prevention is our first line of defense, followed by aggressive eradication programs if the beetle is found," says Swier. "The larva burrows deeply into the tree, making it extremely difficult to control. We currently have no control methods for this pest, although the USDA is conducting experiments testing the effectiveness of some insecticides. Once the beetle has been discovered, it becomes a very expensive search-and-destroy operation, involving cutting, burning and chipping."

Primary means for distribution:

firewood moving in from infested areas "The primary way the beetle may move into New Hampshire is on firewood," says Swier. "People transport firewood long distances, especially to summer camps. In late May of 2009 both State and Federal regulators banned the movement of firewood into government-owned parks and the White Mountain National Forest. We've identified residents of the Worcester area who own property in New Hampshire and have sent individual letters to them all, urging them not to bring firewood into the state and to notify us if they have." As people learn to recognize the adult ALB and its emergence holes, it is hoped they'll alert the state authorities: the *Department of Agriculture, Markets and Food*, the *Division of Forests and Lands*, or their local Cooperative Extension Office. The Hillsborough County office can be reached at 603-641-6060. Samples can be sent to the office via digital camera or the US Postal Service, or they can be brought into the Goffstown and Manchester offices for identification. For more information on Asian longhorned beetle visit <http://extension.unh.edu/ALB/>.

