

May/June 2009

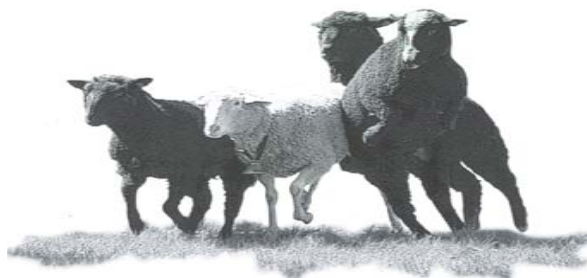
**Congratulations**  
to  
**Joanne Gelinas!**



Joanne, leader of the Mini-Hoofbeats & Hoofbeats 4-H Clubs in Goffstown, received The American Youth Horse Council **Leader of the Year** Award, held at the 32nd Annual National Youth Horse Leaders Symposium on March 28, 2009 in Lincoln, Nebraska.

Joanne was a 4-H member of the Hoofbeats 4-H Club as a youth in Weare, NH and has been the club leader for 31 years. Prior to her leadership, her late father, Howard "Bumper" Ineson assisted with the club for over 40 years.

33rd ANNUAL  
*New Hampshire Sheep  
& Wool Festival*



See "ewe" on May 9 & 10 for a Wooly Good Time!

33rd Annual New Hampshire Sheep & Wool Festival  
May 9 & 10, 2009  
Hopkinton State Fairgrounds  
Contoocook NH (exit 7, I-89)  
Admission: \$5 Adults / \$4 Seniors / Children under 12 free  
For information on the NH Sheep & Wool Festival, please visit their website at: <http://www.nhswga.com>.  
To obtain a festival book, call Jolee at 603-641-6060.  
Dogs and other pets are not allowed on the Fairgrounds.

Come be a part of the Hillsborough County crowd and join the fun at Teen Conference!



**Teen Conference**  
**"4-H Island Challenge"**  
June 28 – July 1, 2009  
Held at UNH Durham

Join other teens from across NH and neighboring states at the University of New Hampshire for the 31st Annual 4-H Teen Conference. The conference is open to all teens completing the 8th grade (or age 14 by 6/28/09) up through 12th grade.

Each Day is packed with fun educational activities and social time. Stay at the UNH dorms. Cost for this program is \$190 for the entire 4 days. Room, Meals, Activities and t-shirt are included (some workshops carry an additional fee).

For more information visit:  
<http://extension.unh.edu/4H/TeenConf.htm>  
or call the Goffstown office at 603-641-6060.

**When The Tree Bark Splits!**

By *George Hamilton, Extension Educator, Agriculture*

Bark splitting can happen due to various environmental conditions that occur at different times of the year. Splits can occur on the trunk of the tree and the branches. Bark splits are not likely to be fatal to trees, although they will, sometimes, allow entry of disease organisms that can cause decay. Through proper treatment to encourage the natural callusing process, a tree can heal the injury.

Certain trees are more susceptible to bark splitting than others. The trees that are more susceptible include maple trees, fruit trees and various ornamental fruit trees. Any newly-planted tree, especially if thin-barked, is more susceptible to bark splitting if no one has properly cared for it.

During the winter and early spring, severe cold followed by rapid thawing can result in splits called "frost-cracks." These "frost-cracks" can actually start from a wound inflicted earlier in the tree's development. Sometimes the crack may remain in the internal wood, but frosts can cause the crack to expand and split the bark. Excessive late growth in the fall, stimulated by warm temperatures, high humidity and high nitrogen levels, can increase susceptibility of trees to frost cracking.

See *Tree Bark...* page 4

**4-H ANIMAL APPROVAL FORMS REMINDER**

William Welch would like to remind all 4-H members who wish to show their sheep, goats, swine, rabbits, or poultry at the 4-H fairs in 2009 they must have their **approval forms** into the 4-H office by June 15, 2009. Cloverbuds do not need approval forms for their rabbits and poultry.



*The University of New Hampshire Cooperative Extension is a public institution with a long standing commitment to equal opportunity for all. It is the policy of UNHCE to abide by all United States and New Hampshire state laws and University System of New Hampshire and University of New Hampshire policies applicable to discrimination and harassment. It does not discriminate on the basis of race, color, religion, sex, national origin, age, veteran's status, gender identity or expression, sexual orientation, marital status, or disability in admission or access to, or treatment or employment in, its programs, services, or activities.*

NON-PROFIT  
ORGANIZATION  
U.S. POSTAGE PAID  
PERMIT NO. 23  
GOFFSTOWN, NH

Return Service Requested

UNH Cooperative Extension  
Hillsborough County  
329 Mast Road  
Goffstown, NH 03045

## STATE ACTIVITIES DAY SATURDAY, MARCH 21, 2009

Hillsborough County 4-H Activities

Day was held on March 21, 2009 at Milford Middle School. Over 150 youth, leaders, & volunteers participated. State Activities Day will be held on May 30, 2009 at Merrimack Valley High School in Penacook for top scoring members ages 12 & over.

The public is welcome.

**Here are the results:**

**Photos:** There were 42 photo entries.

*Chosen for State:*

**Briana Hirst** (Thumpers),  
**Amanda Hanson** (Quackers),  
**Joel Raymond** (Independent),  
**Honorable Mention** for a photo taken by a member under 12:  
**Dana Demore** (NH Cluckers),  
**Molly Harris** (Mini Hoofbeats),  
**Nicole Nanof** (Mini Hoofbeats).

**Posters:** There were 37 poster entries.

*Chosen for state:*

**Emily Harris** (Hoofbeats),  
**Marilyn Hardwick** (Farming Fun),  
**Shawna Sutton** (Horse Around).  
**Honorable Mention** for posters by a member under 12:  
**Nicole Nanof**, (Mini Hoofbeats),  
**Monique Sirois**, (Mini Hoofbeats),  
**Molly Harris** (Mini Hoofbeats).

**Demonstrations/ Illustrated Talks:**

Participating were 12 *Seniors*, 8 *Juniors* & 3 *Cloverbuds*.

*Chosen for State:*

**Sarah Koski** (Drop Spindles),  
**William Collins**, (Quackers),  
**Amanda Hanson** (Quackers),  
**Brianna Stoye** (Hoofbeats),  
**Paige Tuttle** (Hoofbeats),  
**Quincy Raymond** (Independent),  
**Emmett Craggy** (Independent),  
**Emily Bailey** (Thumpers),  
**Nina Hedberg** (Thumpers).  
The top *Juniors*:  
**Dana Demore** (NH Cluckers),  
**Annemarie Herfurth** (Maple Leaves),  
**Thomas Michaud** (Quackers).

**Action Exhibits:** There were 10

*Senior Action Exhibits*, 11 *Juniors* & 3 *Cloverbuds*.

*Chosen for State:*

**Jordan Springman**, **Rachel Springman**,  
**Elizabeth Fontaine** (Team Saddlehackers),  
**Justine Kuzmich** (Riders Range),  
**Megan Tyrrell**, **Hanna Perron**, &  
**Taylor Fagan** (Team Saddlehackers),  
**Ethan Craggy** (Thumpers),  
**Olivia Bianchi**, **Angelena Leal**, &  
**Alex Martineau** (Team Saddlehackers),  
**Sarah Clements** (Mini Hoofbeats).  
*Alternates for State:*  
**Cody Griffin**, **Miranda David**, &  
**Brianna Lucciano** (Team Apple Valley),



*Justine Kuzmich, a member of the Hollis Rider's Range 4-H Club and one of 100 youth who participated, displays her interesting hands-on Action Exhibit*

**Casey Hayden**, **Rachel Crinklaw**, &  
**Cheyenne Melanson** (Team Apple Valley).

The top *Juniors*:

**Jarrett Patch** (Busy Beavers),  
**Megan Gialluca** (Earth Angeles),  
**Brittney Spooner** (Drop Spindles),  
**Christen Drury** (Drop Spindles).

**Public Speaking:** There were 4 *Senior* speeches.

*Chosen for State:*

**Grantham Raymond** (Independent),  
**Ethan Craggy** (Thumpers).

Going to Louisville, KY, trying for a spot on the National Horse Round-Up Team, with her speech on "Race Track Reality":

**Breanna Brenman** (Apply Valley)

**Fashion Revue****Sewing & Judging:**

*Chosen for State:*

**Sarah Koski** (Drop Spindles),  
**Samantha Patch** (Busy Beavers),  
**Lillian Zimmermann** (Busy Beavers),  
**Natalie Herfurth** (Maple Leaves),  
**Sarah Lundquist** (Maple Leaves),  
alternate, **Travis Cook** (Goats R Us).

**Modeling:**

*Chosen for State:*

**Anna Barlow** (4-H Oinker's).  
The top *Intermediate* members:  
**Kassy Cavaretta** (Maple Leaves),  
**Hannah Welch** (Maple Leaves).  
The top *Novice* sewers:  
**Jane Koski** (Drop Spindles),  
**Will Welch** (Maple Leaves),  
**Jeremy Cavaretta** (Maple Leaves).

**Fashion Selections**

*Chosen for State:*

**Anna Barlow** (4-H Oinker's),  
**Maddy Bergeron** (Mini Hoofbeats),  
**Katie Kos** (4-H Oinker's),  
**Mark Cook** (Goats R Us).  
The top *Junior* members were  
**Monique Sirois** (Mini Hoofbeats),  
**Melissa Coskren** (Mini Hoofbeats).

**Congratulations!**

to everyone who participated in this outstanding County Event on doing a fantastic job!

**Mark your calendars for March 20, 2010**

**Give Vegetable Transplants A Good Start**

by **George Hamilton**, Extension Educator, Agriculture

Planting time is finally here. So, when you are planting your vegetable transplants, consider using a starter fertilizer solution. Using a starter solution can help to get vegetable transplants off to a good start in the spring.

Starter solutions are mixtures of soluble fertilizer and water. The fertilizer material is easily dissolved in water, and the nutrients are readily available for plant uptake.

Young transplant roots need to have immediate access to phosphorus that is readily available. In the spring, with cool soil temperatures, phosphorus in the soil will not be available to plants. When the soil temperature warms up, the soil phosphorus will be available. By applying a starter fertilizer solution at planting time, transplants will have an immediate access to a readily available source of phosphorus. Phosphorus deficient plants grow slowly, and have dark green leaves that are tinted with purple or have purple veins.

The normal application is done at transplanting time. After the plant is inserted into the planting hole, pour 1/2 pint (8 fluid ounces) of the solution into the hole. The starter solution should saturate the root ball of the transplant.

If cool weather and soil conditions occur after the transplanting time, a second application may be needed 10 to 14 days after transplanting.

Some starter fertilizers are designed for application in the dry form. Sweet corn and beans are examples of vegetable crops where the dry starter fertilizer should be used at the time of planting. These dry forms of starter fertilizers should not be used to make the liquid starter solution.

There are many formulations of starter fertilizer solutions. Generally, it is better to use a starter fertilizer which contains two to three times as much phosphorus as nitrogen and/or potassium.

Be careful, application of high nitrogen starters could result in excessive vegetative growth.

**Examples Of Starter Solution Formulation****High Phosphorus Starter**

% Nitrogen - % Phosphorus - % Potassium  
9 - 45 - 15  
10 - 52 - 17  
10 - 55 - 10

**Medium Phosphorus Starter**

% Nitrogen - % Phosphorus - % Potassium  
15 - 30 - 15  
16 - 32 - 16

The recommended mixing rate is stated on the label of each brand of starter fertilizer. Also, the mixing rate of starter fertilizer varies with different vegetable crop transplants.

Mixing Rates of Starter Solution for Vegetable Transplants  
3 pounds per 50 gallons    2 tablespoons per gallon  
Broccoli, Eggplant, Cabbage, Pepper, Tomato, Cauliflower

2 pounds per 50 gallons    1 1/2 tablespoons per gallon  
Cucumber, Squash, Muskmelon, Watermelon, Pumpkins

Do not apply starter solutions when soils are excessively dry. Application at this time could result in root damage. If transplants are set into dry soil, water should be added first, followed by starter solution.

When using a starter solution, there are five guidelines gardeners should follow. First, use starter solutions when transplanting. Second, check the label and mix at the proper rate. Third, apply about 1/2 pint per transplant. Fourth, soak the entire root system uniformly with starter solution. Fifth, use starter solutions only when soil moisture is adequate for normal plant growth.

## What's Happening in Extension!

### Agriculture

#### New Hampshire Tree Fruit Growers Twilight Meeting

Date: Wednesday, May 13, 2009  
Time: 5:30 pm - 8 pm

Location: **UNH Woodman Horticultural Farm, Durham, NH**

Hosts: Bill Lord, John McLean and Evan Ford

The New Hampshire Fruit Growers' Association and UNHCE are sponsoring a joint commercial tree fruit growers' twilight meeting. A special presentation will be made by Eric Mader of Midori Horticultural Services, Madison, Wisconsin on "Diversifying Your Pollination Services with Non-Apis Bees." New Hampshire NRCS and UNH Cooperative Extension specialists will be present to discuss pest management options, orchard management and apple thinning options. NH pesticide credits will be offered to those attending the full meeting. For more information, contact [George Hamilton](mailto:George.Hamilton@unh.edu) at 603-641-6060.



#### New Hampshire Tree Fruit Growers Twilight Meeting

Date: Wednesday, June 10, 2009  
Time: 5:30 pm - 8 pm

Location: **Cardigan Mountain Orchard, 1540 Mt Cardigan Road, Alexandria, NH**

Hosts: Steve and Nancy Bleiler

The New Hampshire Fruit Growers' Association and UNHCE are sponsoring a joint commercial tree fruit growers' twilight meeting. UNH Cooperative Extension specialists will be present to discuss pest management options, orchard management and apple thinning options. NH pesticide credits will be offered to those attending the full meeting. For further details, contact [George Hamilton](mailto:George.Hamilton@unh.edu) at 603-641-6060.



#### Hillsborough County Conservation District Annual Meeting

Date: Wednesday, May 6, 2009  
Time: 6:30 pm - 9 pm

Location: **Milford Town Hall, Banquet Room, Milford, NH**

Cost: \$10 per person for appetizers, desserts and refreshments  
The Hillsborough County Conservation District will hold its annual meeting, featuring a presentation on **Invasive Pests: How to identify them early** by Kyle Lombard or Jen Weimer from the NH Division of Forests & Lands. All County residents are encouraged to attend. For more information and to register, please contact Kerry Rickrode, District Manager, at 603-673-2409 Ext. 4 or email [kerry.rickrode@nh.nacdn.net](mailto:kerry.rickrode@nh.nacdn.net). *Deadline to register is Friday, May 1, 2009.*



### Forestry

#### How to Transplant Shrubs and small Trees

Date: Monday, May 4, 2009  
Time: 4 pm - 6 pm

Location: **Shieling State Forest Old Street Road, Peterborough, NH**

Cost: \$5  
Presenter: **Jon Nute**, Hillsborough County Extension Forester.

### Family & Consumer Resources

#### Parent Expo 2009

Date: Saturday, May 9, 2009  
Time: 10 am - 3 pm

Location: **Mall of New Hampshire**

Come to a FREE Parent Expo Saturday May 9, 2009 at the Mall of New Hampshire! Resources and information will be available from over 30 exhibitors representing organizations serving parents and kids of ALL ages. There will be fun, free stuff, a raffle, face painting, demonstrations, etc. For more information, call [Sharon Cowen](mailto:Sharon.Cowen@unh.edu) at 603-641-6060.

### 4-H

#### 4-H Shooting Sports Training

Date: May 16 - 17, 2009

Location: **Camp Barry, Milan, NH.**

Choose from 1 of 6 shooting disciplines. Adults and teen leaders 16 and older are welcome. Once trained, you will be certified to teach your discipline to youth in a 4-H shooting sports program. The cost is \$35 and includes all meals, lodging and materials. For more information go to <http://extension.unh.edu/4H/documents/ssbro.pdf> or call [Michael Koski](mailto:Michael.Koski@unh.edu) at 603-641-6060.



*Congratulations to Lillian Zimmerman who was selected as the NH State Winner of the 2009 Ag Day Essay Contest. In honor of this recognition, Lillian will receive \$100 and her essay will be entered into the national contest.*

#### Teen Conference Orientation

Date: Friday, June 5, 2009

Time: 6:30 pm

Location: **HC Nursing Home, 400 Mast Road, Goffstown, NH**

This is a required orientation for anyone attending this year's **4-H Teen Conference** at UNH.



#### Shooting Sports Sampler

Date: Saturday, June 14, 2009

Time: 8:30 am - 4 pm

Location: **Pointer Fish and Game Club, Bedford, NH**

4-H has been invited by the area Boy Scouts to join in their Shooting Sports Day. Try .22 and air rifles, archery, and shotgun. To register, call Mike Koski at 603-641-6060 or email at [michael.koski@unh.edu](mailto:michael.koski@unh.edu). Must be 10 & older to participate. Parents welcome. Lunch is included.



#### All About the Dogs Weekend

Date: June 19, 20 & 21, 2009

Location: **4-H Youth Center, New Boston, NH**

Check In Time: 6 pm  
Join us for a **PAW**sitively good time at the 12th annual weekend of demonstrations, dog training, and fun. Come and learn, meet new people, visit old friends, and just have a **grrreat** time! Organized by the Rolling Bones 4-H Club. For more information, please call Jolee Chase at 603-641-6060 or email [jolee.chase@unh.edu](mailto:jolee.chase@unh.edu) or contact Rolling Bones 4-H Club leader, Danielle Furness at 603-428-3192 or email [daniellesnook@hotmail.com](mailto:daniellesnook@hotmail.com).

#### 2009 Focus on Fashion Trip August 11 - 14, 2009

*Please Join Us for this exciting trip where learning is combined with fun!*

This is a great opportunity to learn about the fashion industry and provide a look into other fashion related careers. Along with learning, you will get to enjoy the sights of New York City. To go on this trip you must be at least 13 years old as of 8/10/09.

This is a trip you will remember as a highlight of your 4-H career. The **Focus on Fashion** trip occurs once every four years. The cost of the trip is \$650 per person which includes: Four days and three nights in NYC, bus transportation to and from NYC, hotel room with quad occupancy, all seminars & sightseeing, a Broadway show and 2 group dinners.

To register online <http://extension.unh.edu/4H/4H.htm> or for more information, call 603-641-6060.



## What's Happening in Extension!

May 2009

Updates - UNHCE Hillsborough County Calendar

### 4-H



#### NH 4-H Foundation Golf Tournament

If you are a golfer, please join us for this year's tournament on May 15, 2009. To register or to sponsor the tournament, go to [http://www.tournevents.com/\\_tournament/](http://www.tournevents.com/_tournament/). Hope to see you there!

### Family & Consumer Resources



#### Managing Money In Tough Times: Finding Money to Make Ends Meet

**Date:** Monday, June 15, 2009

**Time:** 6:30 pm – 8 pm

**Location:** YWCA

72 Concord Street  
Manchester NH 03101

Is it hard to pay your bills or save money? Do you have an emergency fund? We all spend our money differently. Learn new ways, start new habits and see the results. Discover strategies to stretch your dollars and decrease your debt.

Sign up and attend and you will be eligible for a \$25 gift certificate. Please pre-register for this event by calling Maggie Decker at 641-6060.

#### Don't Be Crushed By Debt

**Date:** Monday, June 22, 2009

**Time:** 6:30 pm – 8 pm

**Location:** YWCA

72 Concord Street  
Manchester NH 03101

Often debt problems remain hidden until a job-loss, medical emergency or some other event puts you and your family into a crisis. Do you want to know how to avoid problems caused by too much debt? Would you like to see your savings grow and your debts shrink? Would you like to learn how to reduce debt and have more money for the things you want and need? The workshop is free and childcare is available, but please pre-register. For more information, please call Maggie Decker at 641-6060.



#### Credit Check-UP

**Date:** Thursday, June 29, 2009

**Time:** 6:30 pm – 8 pm

**Location:** YWCA

72 Concord Street  
Manchester NH 03101

Credit problems can be disastrous to one's financial health. Many people have no idea they have a potential credit problem until it becomes a crisis. Having a "credit checkup" is important to achieving financial security now and in later life. We all know how important it is to have physical checkups, but have you had a "credit checkup" lately? Learn how to understand your credit score and how to better manage credit.

The workshop is free, but please pre-register. For more information, please call Maggie Decker at 641-6060.

### 4-H Fashion Revue

4-H members from the state will participate in the 4-H Fashion Revue to be held on Saturday, May 30, 2009 at Pembroke Academy in Pembroke NH. The general public is invited to attend. For more information, please contact Jolee Chase at 603-641-6060 or by email [jolee.chase@unh.edu](mailto:jolee.chase@unh.edu).



Shown here are Hoofbeats & Mini-hoofbeats 4-H members, led by Joanne Gelinas

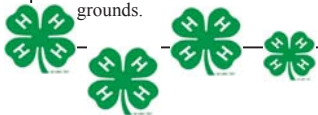




Elyse Morano and her pony Charlie would like to remind everyone that the **2009 Youth Benefit Horse Shows** will be held at the 4-H Youth Center in New Boston. The shows are sponsored by the Hillsborough County 4-H Horse Council and the Hillsborough County 4-H Foundation, Inc.

Show dates are May 3, August 23 and October 18, 2009. For a class list visit the UNH Cooperative Extension web site: <http://extension.unh.edu> or call the 4-H office at 603-641-6060.

You don't have to have a horse to enjoy the shows, everyone is welcome to come and watch. The show is open to all youth 8 years old (as of 1/12/09) and adults. You do not have to be in 4-H to participate, but you must wear an ASTM approved helmet with chinstrap attached while riding on the grounds.



**Tree Bark...continued from page 1**

Fluctuating growth conditions may also cause bark injury. Dry weather (which slows growth) followed by wet or ideal growth conditions may cause an excessive or vigorous amount of growth leading to splits in the bark.

Sunscald, especially in winter months, can cause injury to thin-barked or young trees. Although you may not see a noticeable split immediately, the outer layer of bark will peel away from the damaged area. Avoiding heavy pruning to trees that have dense canopies will reduce sunscald injury to tree limbs. Gradual thinning of limbs over a period of years is preferable, particularly on thin-barked trees.

An application of good quality, white latex paint will help to protect the tender bark of young fruit trees. Apply the latex paint until the fruit tree's bark is mature enough to develop tougher bark. Do not use oil-base paint because it will cause tissue damage. The latex paint should be diluted with equal parts of paint and water. You should take special care to paint the southern exposed side of the tree trunk and the crotches of the first set of branches. The white surface helps reflect the sun's rays and heat, thus preventing sudden expansion of the bark that can result in injury. White paint surfaces may also reduce insect damage caused by different types of trunk borers although, there is no research to confirm this presently.

When a split occurs on a tree, what should you do? In recent years, quite a bit of research has been done on closure of tree wounds. These investigations have shown that tree wound paints are of little value in helping a tree to callus over. So, do not paint or try to seal a split with paint or tar. Leaving the area untreated is better. A wound on a tree growing with good vigor usually calluses over quickly. Encourage vigor in the tree with yearly spring fertilizer applications. Also, be sure to provide adequate irrigation in hot, dry weather. Bark splits will often close over completely leaving a slight ridge in the trunk where callus tissue has been produced.

**Come Join the FUN with 4-H at the Fisher Cats Game**

**Sunday, August 9, 2009 from 1 pm - 3 pm at Fisher Cats Ball Park in Manchester.**

**Fisher Cats vs the Altoona Curve, The Pittsburg Pirates farm team**

Bring your friends or take the family to a baseball game and support the 4-H Foundation of NH.



If you are connected with 4-H, please wear your **GREEN** so that we are noticeable in the stands. Hillsborough County 4-H t-shirts are available for \$8 at the 4-H Office.

Game tickets are \$8 each (children under 3 are free) and must be purchased by **June 13**. \$3 from each ticket sold goes to support the 4-H Foundation of NH.

Join other New Hampshire 4-H families and friends for a **FUN**draising evening!

Name: \_\_\_\_\_

Address: \_\_\_\_\_

City: \_\_\_\_\_ State: \_\_\_\_\_ ZIP: \_\_\_\_\_

Phone: \_\_\_\_\_

# Tickets at \$8 each: \_\_\_\_\_ = \$ \_\_\_\_\_ enclosed

To purchase tickets, please complete the form above and mail with payment no later than June 13\* to:

**UNH Cooperative Extension, 329 Mast Road, Room 101, Goffstown, NH 03045.**

*\*Call 641-6060 after June 13 for ticket availability*



**Hillsborough County**  
329 Mast Road  
Goffstown, NH 03045  
603-641-6060  
FAX 603-645-5252

**Family, Home & Garden Education Center**  
200 Bedford Street  
Manchester, NH 03101  
877-398-4769  
Fax 603-629-9998  
<http://extension.unh.edu>

**Newslines Editor**  
Michael Koski

**Designer**  
Maggie Decker

**County Office Administrator**  
Daniel Reidy

**Support Staff**  
Maggie Decker Pam Doherty  
Janell George Holly McKinney

Mission Statement  
"UNH Cooperative Extension provides New Hampshire citizens with research-based education and information, enhancing their ability to make informed decisions that strengthen youth, families and communities, sustain natural resources, and improve the economy."

Practical solutions to everyday questions

**Family, Home & Garden EDUCATION CENTER**

- Toll Free Info Line  
1-877-EXT-GROW  
(1-877-398-4769)
- Monday-Friday 9am-2pm  
& Wednesday 5pm-7:30pm
- Email questions to:  
answers@unh.edu
- Visit our website at:  
extension.unh.edu



*Emerald Ash Borer*

# The Attack of Invasive Pests Too Close to Home



*Asian Longhorn beetle*

Featuring:

**Kyle Lombard, Forest Health Program  
Coordinator, NH Division of Forests and Lands**

Sponsored by:



## Hillsborough County Conservation District



**Wednesday, May 6th**

**6:30 PM to 9:00 PM**

**Milford Town Hall**

Kyle Lombard will give a presentation on many of the invasive pests that are threatening NH's land. He will provide an overview of the various insects such as the asian longhorn beetle, hemlock woolly adelgid, hemlock elongate scale, and emerald ash borer. An explanation of how the infestation occurs, the type of trees it is affecting, how to identify an infected tree, and where to report an issue will be presented. He will explain why we need the particular tree species that are being destroyed and what is being done to prevent these pests from coming into New Hampshire. A main point that will be addressed is that these invasive pests are controllable, but they need to be found early before the spread leads to massive devastation. Kyle will identify what the typical homeowner can do to prevent the spread of invasive insects.

**Awards will also be presented to HCCD's Cooperator & Teacher of the Year!**

**Appetizers, Desserts and Refreshments will be served**

**Fee per person: \$10.00 (ALL County residents are encouraged to attend.)**

***Registration Deadline: Friday, May 1<sup>st</sup> (space limited)***

For more information

Contact the District at (603) 673-2409 or by e-mail at  
kerry.rickrode@nh.nacdnet.net

### Directions

Take Highway 101. Exit on Route 13, heading North. Or, take Route 101A West into Milford center. The Milford Town Hall will be on your right. Ample parking is located on Middle Street next to the Town Hall. Enter at Middle Street or Oval Entrance. Follow signs.

### ✂-----Annual Meeting Registration Form-----✂

\_\_\_\_\_  
Name

\_\_\_\_\_  
Address

\_\_\_\_\_  
City/State/Zip

\_\_\_\_\_  
Phone #

\_\_\_\_\_  
E-mail address

\_\_\_\_\_ @ \$10/pp = \$\_\_\_\_\_

# Attending

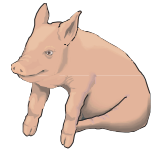
Please make check or money order payable to **HCCD**.

Mail payment with this form to: HCCD,  
Chappell Professional Center  
468 Route 13 South, Milford, NH 03055

**REGISTRATION DEADLINE: May 1<sup>st</sup>**



# Swine Education Day



## AGENDA

9:30 AM - Registration

10:00 AM

Rules for bringing Swine into NH

Dr. Steve Crawford  
NH State Veterinarian

11:00 AM

Swine Housing for New England

Dr. Drew Conroy

12:00 PM

Lunch; Box lunch provided

1:00 PM

Basic Swine Nutrition

Tina Savage, Ag Resources  
UNH Cooperative Extension

2:00 PM

Swine Disease

Dr. Steve Crawford

Join us for an informative session!

When: Saturday, May 2, 2009

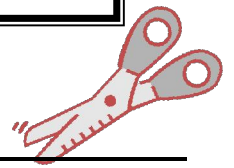
Where: UNH Thompson School  
Cole Hall, Room 219

Cost: \$10.00 per person  
NHPPC members FREE

For more information contact:

Tina Savage, Extension Educator UNH  
Cooperative Extension (603) 447-3834.

Pre-Registration is required  
By April 27, 2009



To register, please send a check for \$10.00 per person, made payable to NHPPC, to Swine Education, c/o UNHCE, P.O. Box 1480, Conway, NH 03818. Also include the name(s) of attendee(s), mailing address and daytime telephone number.

Name(s) \_\_\_\_\_

Mailing Address \_\_\_\_\_

Daytime Telephone # \_\_\_\_\_

*The University of New Hampshire Cooperative Extension is an equal opportunity educator and employer. UNH, U.S. Department of Agriculture and New Hampshire counties cooperating. "Helping You Put Research and Knowledge to Work."*

*"For persons with disabilities requiring special accommodations please contact UNH Cooperative Extension at 447-3834 within 14 days so proper consideration may be given to the request."*