



## **New England Vertebrate Diversity Goals**

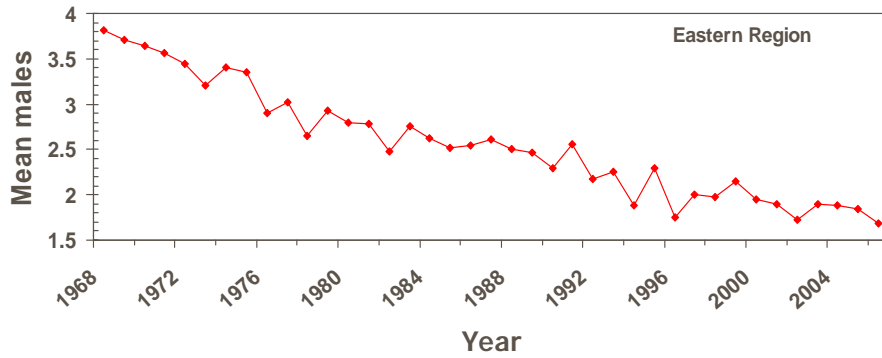
*(New England Wildlife: Management of Forested Habitats, DeGraaf et al, 1992)*

**Of the 257 vertebrate wildlife species in New England that have a primary or secondary dependence on woody vegetation:**

**•233 (90 percent) have a primary or secondary dependence on regenerating or young age classes among all forest types.**

**•5 New England States list 59 species that require early successional habitats as species with “Greatest Conservation Needs” (39 birds, 13 mammals, 7 reptiles/amphibians).**

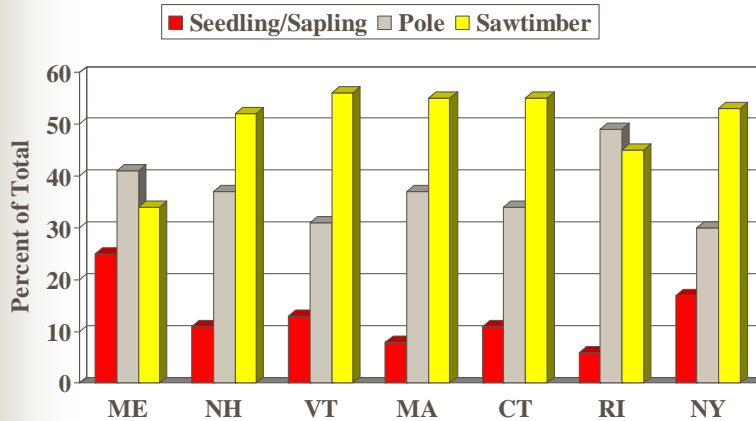
### Number of Singing Male Woodcock Heard Per Survey Route in The Eastern Management Region



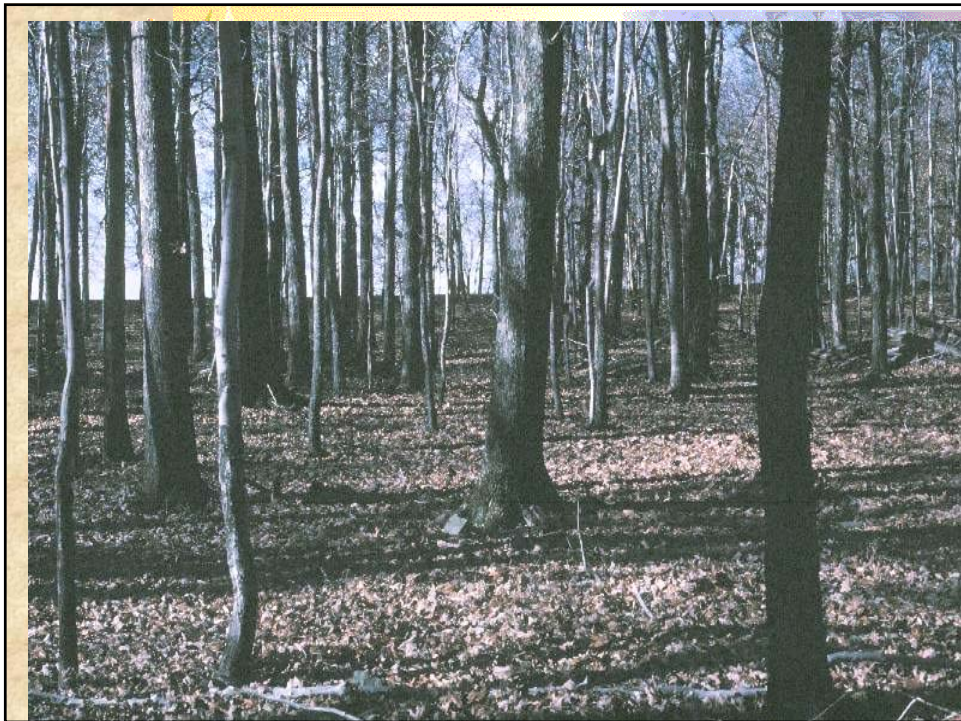
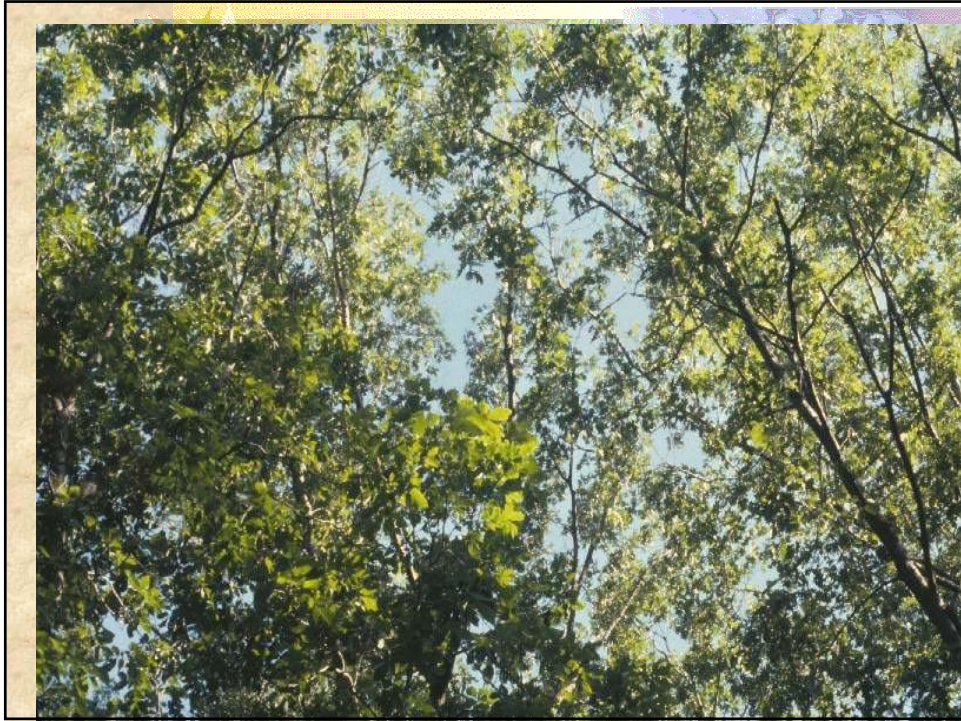
Data from: Kelley, J.R., Jr., and R.D. Rau. 2006. American woodcock population status 2006. USFWS



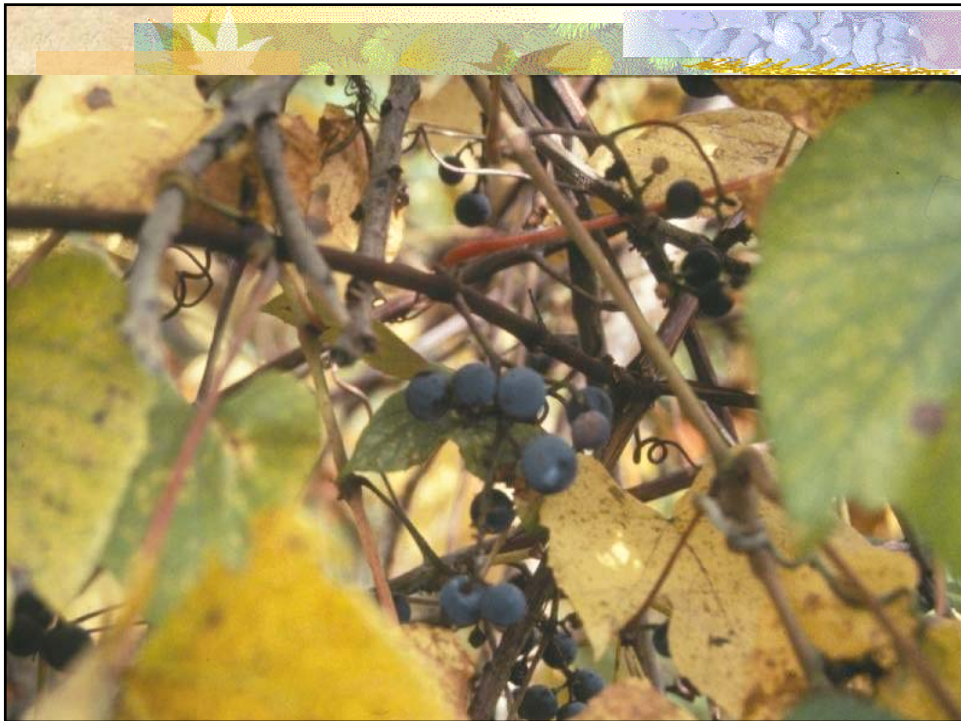
### Forest Stand Class Distribution in the Northeast

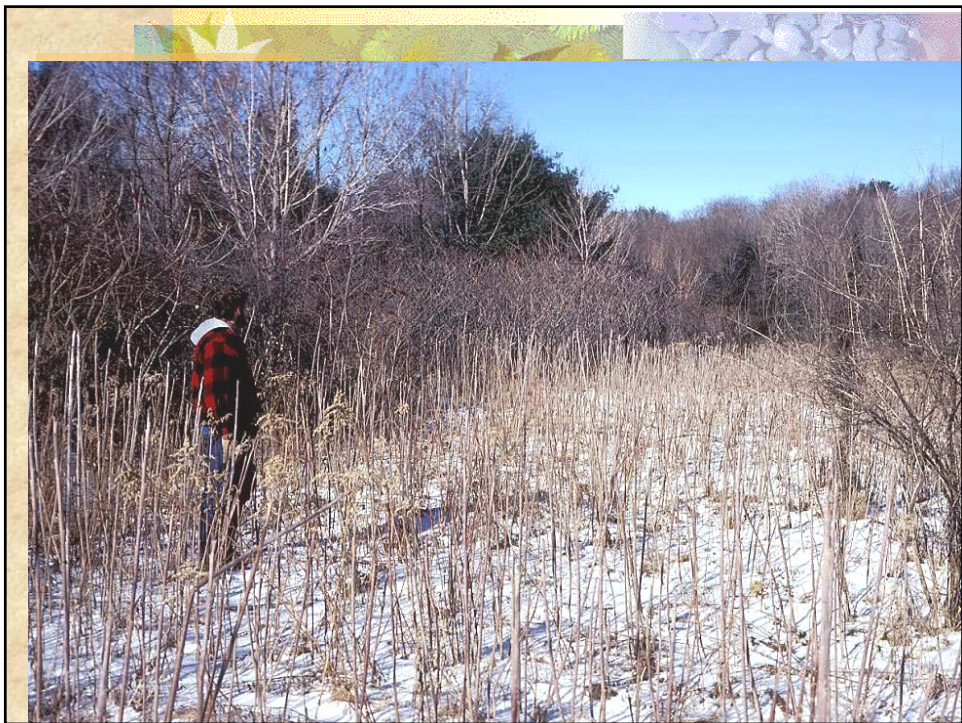
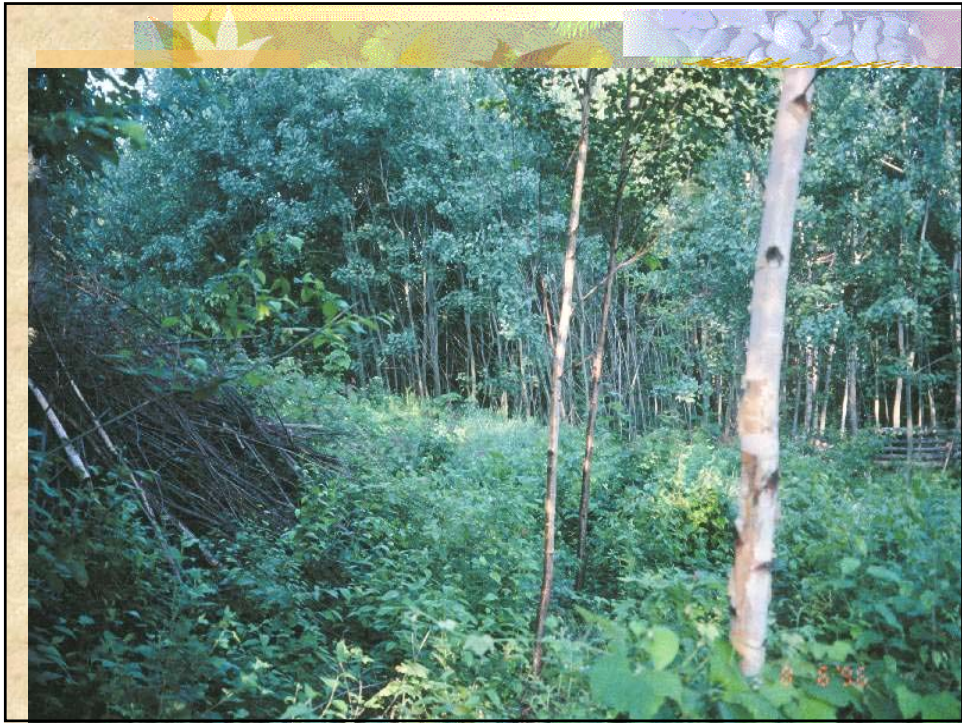


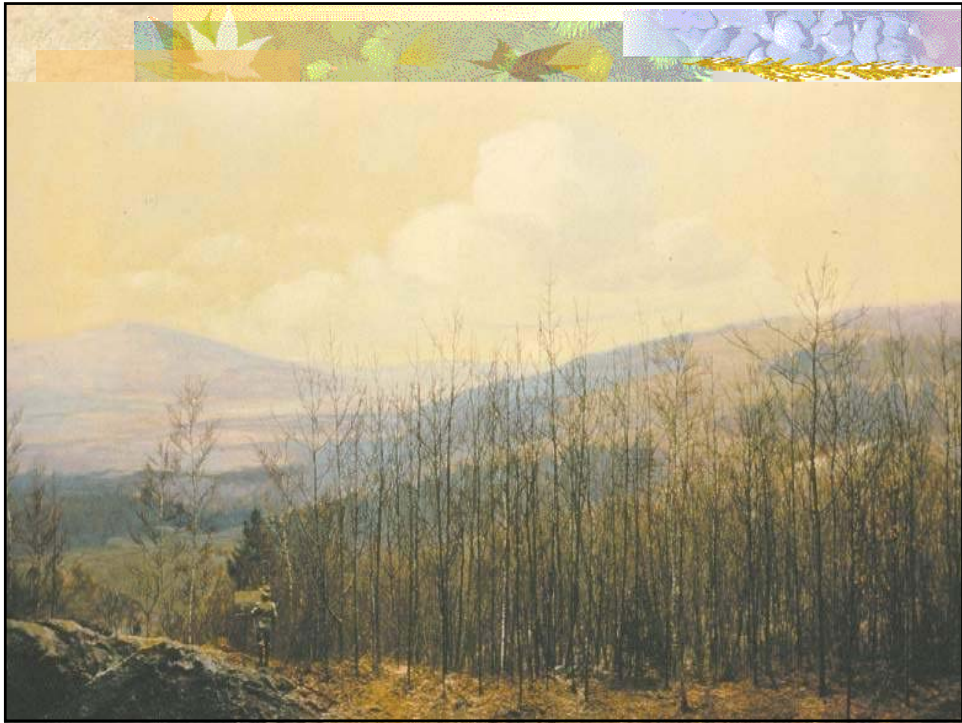
Data from: USDA, Forest Service. 1999. Early successional Habitat and Open Lands Assessment for the Eastern and Southern Regions.





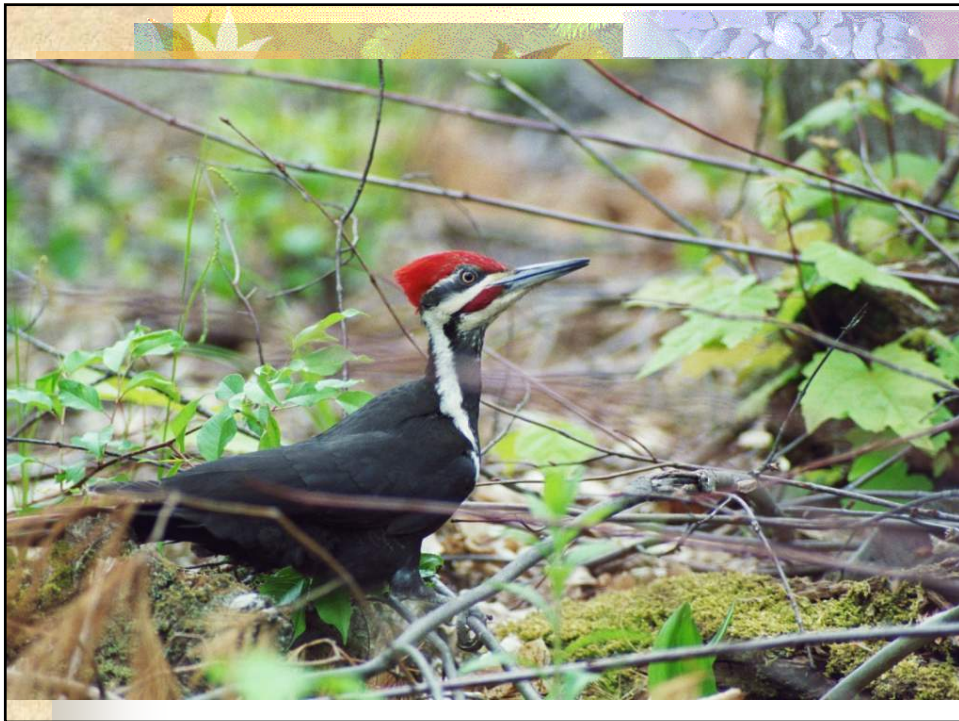


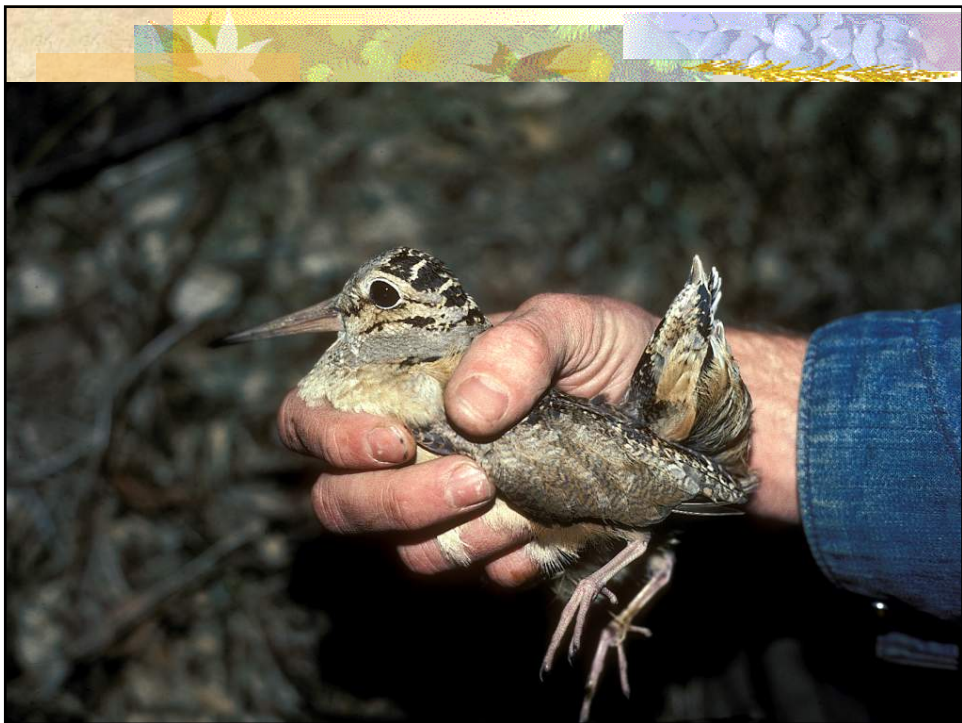
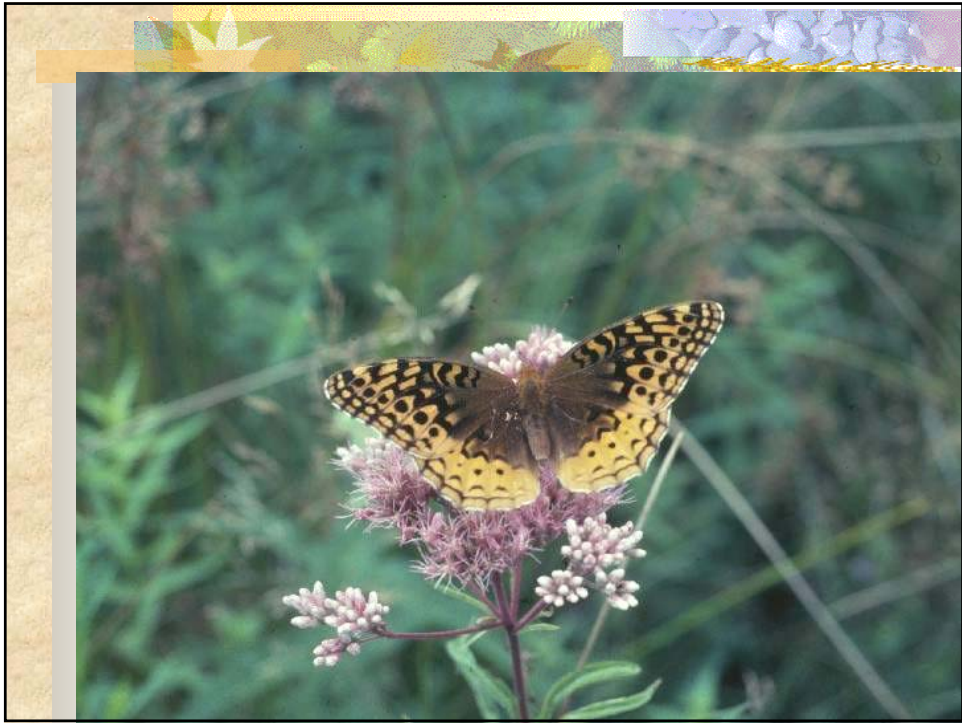






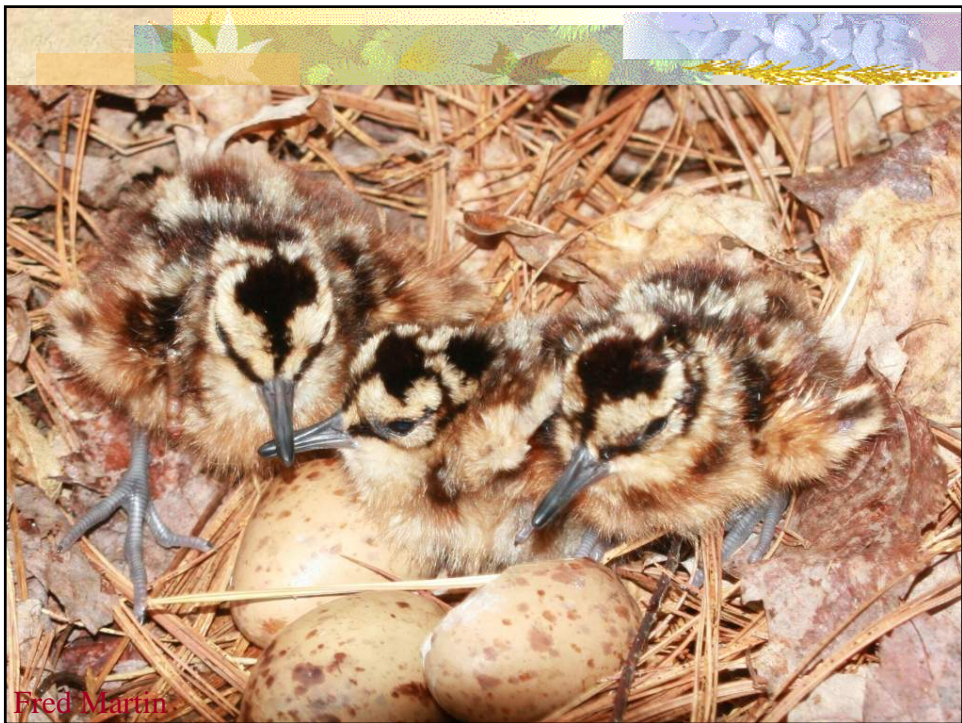
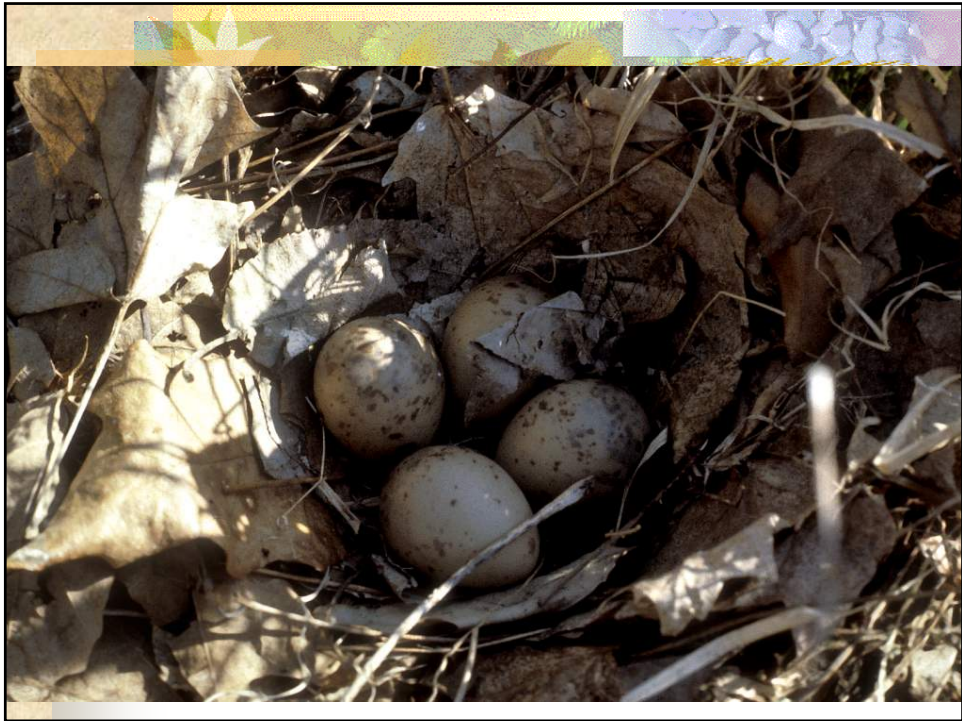


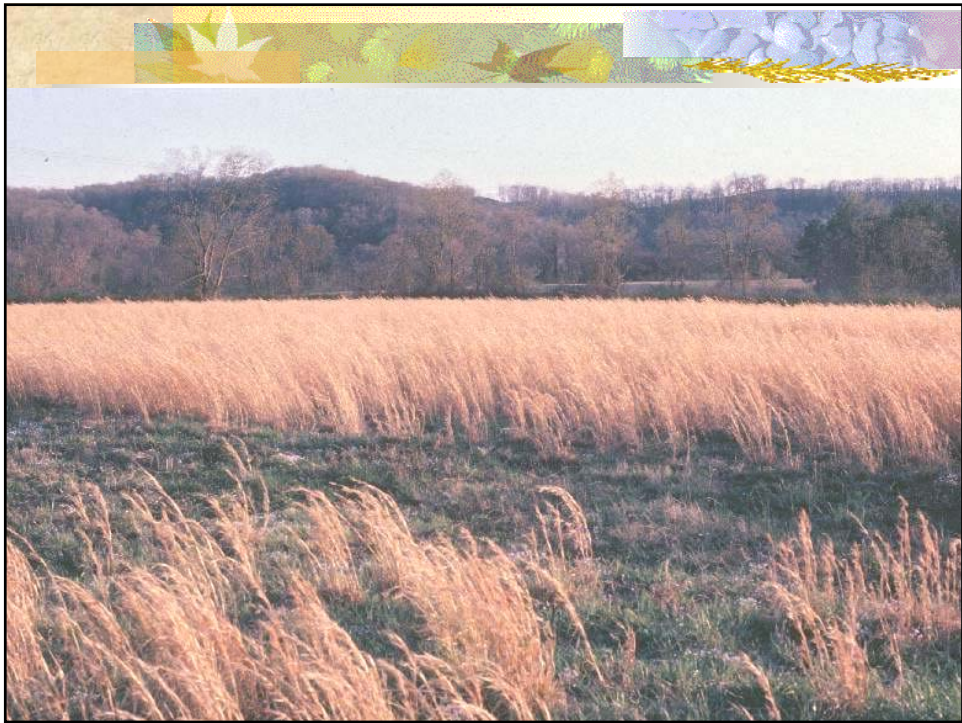


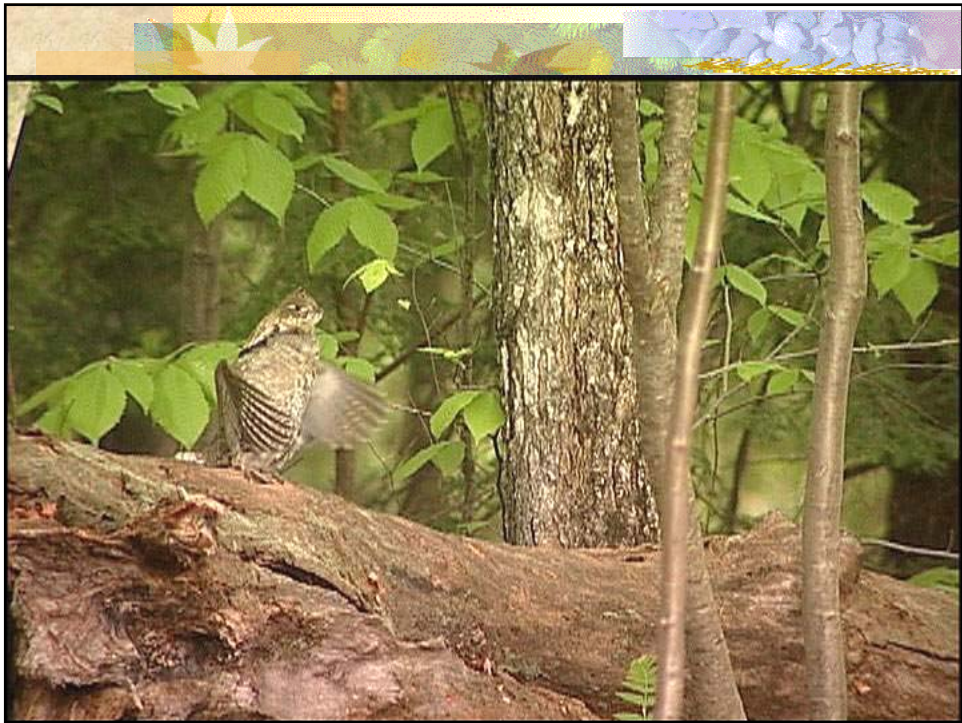


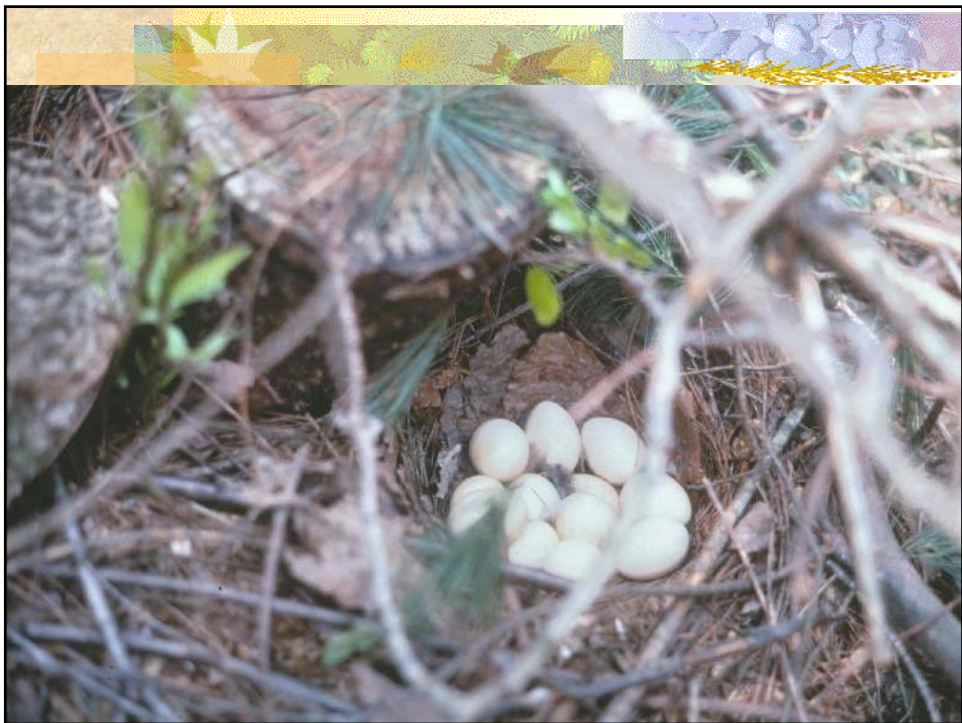
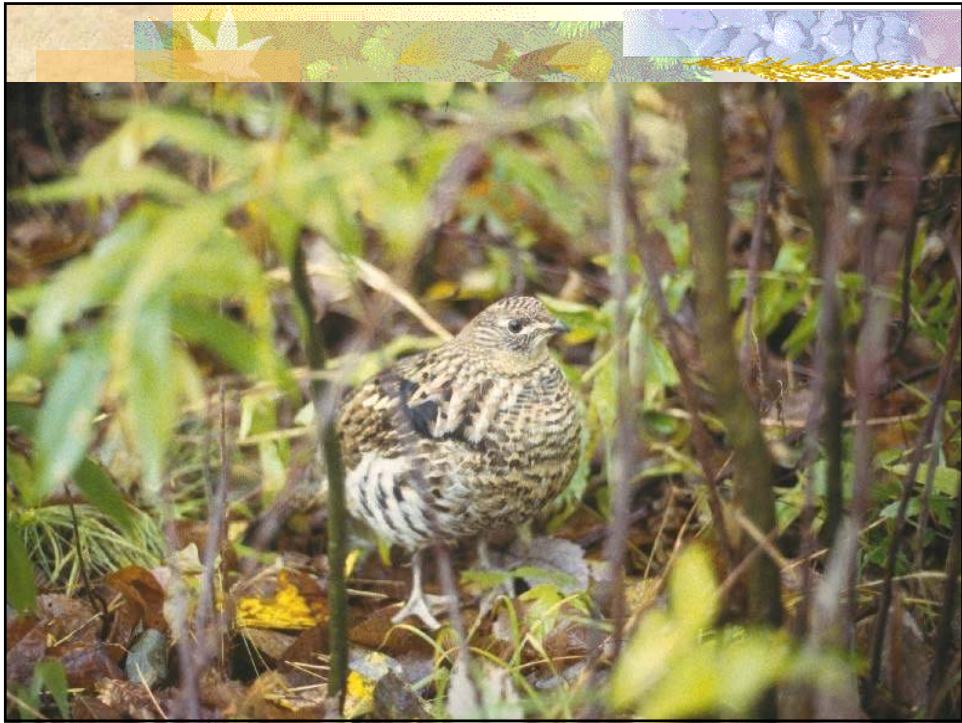


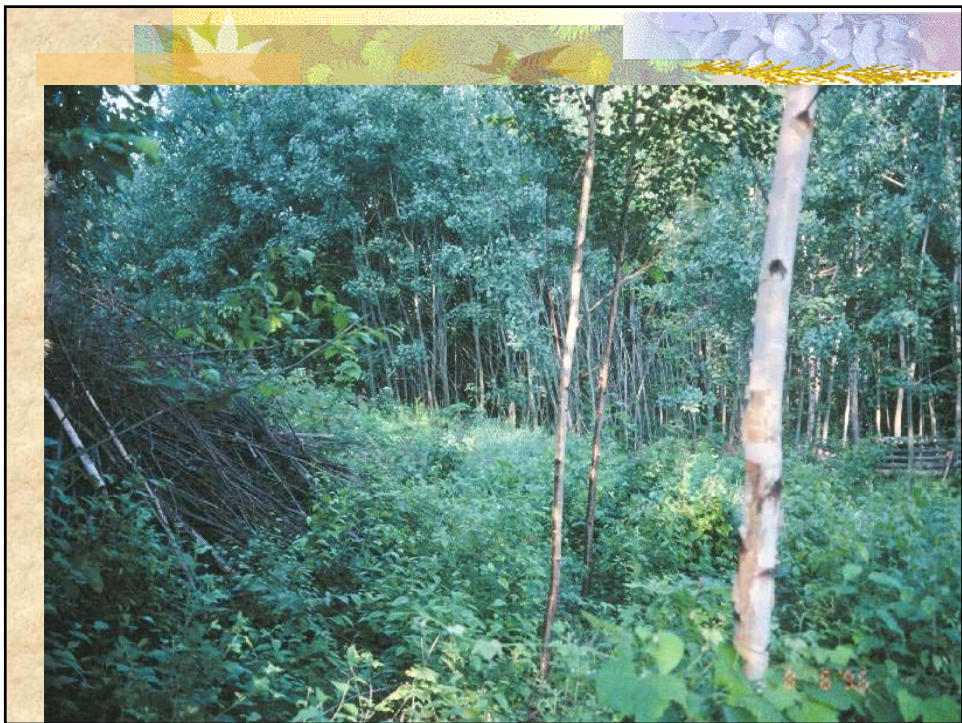
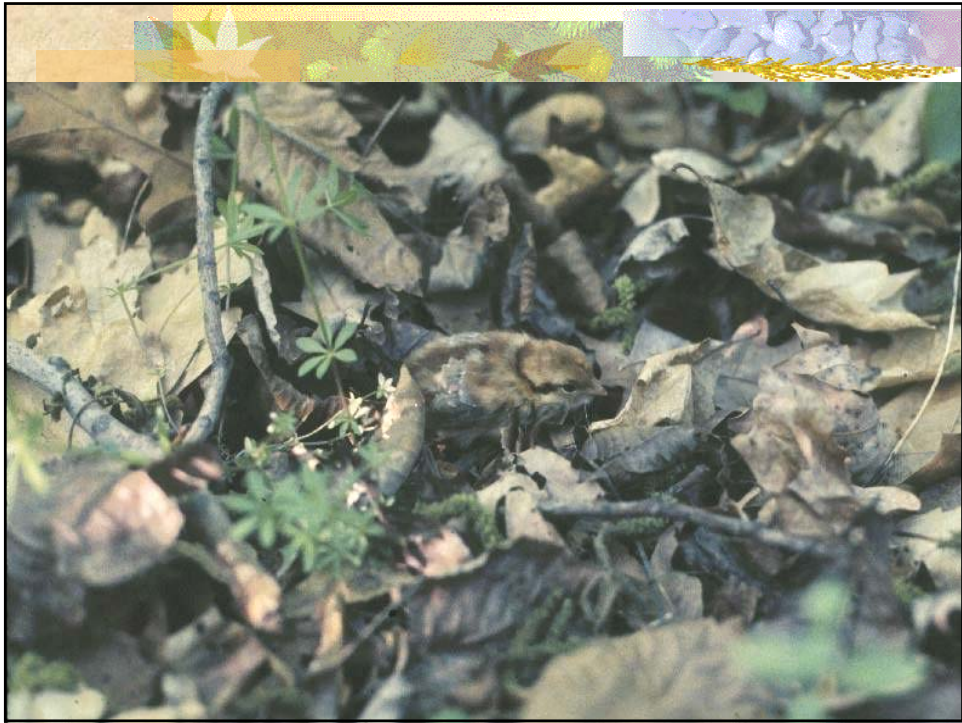


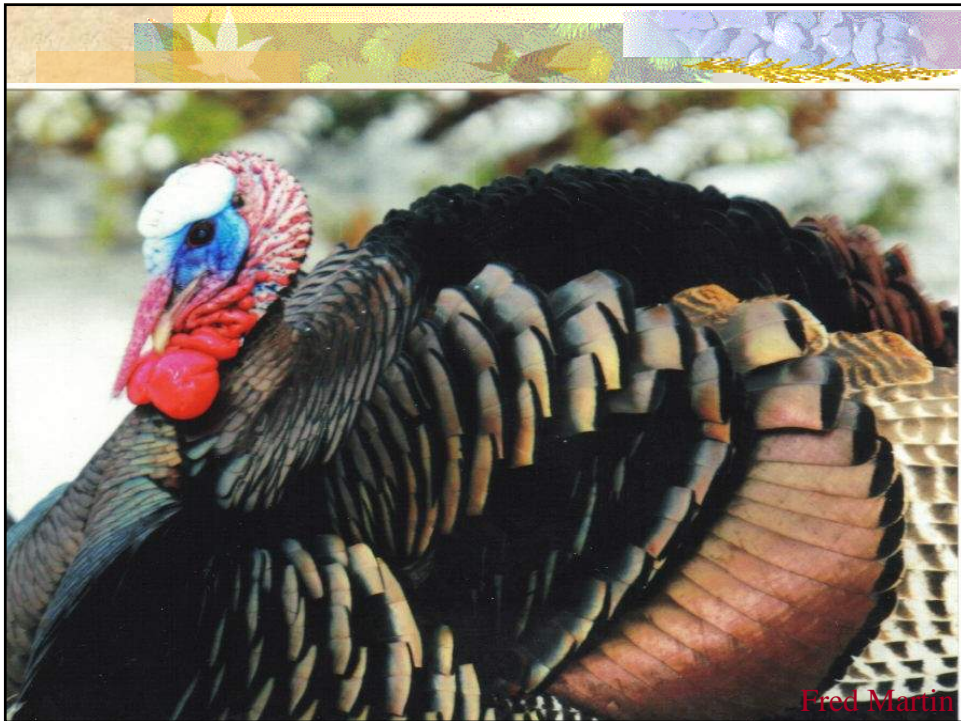


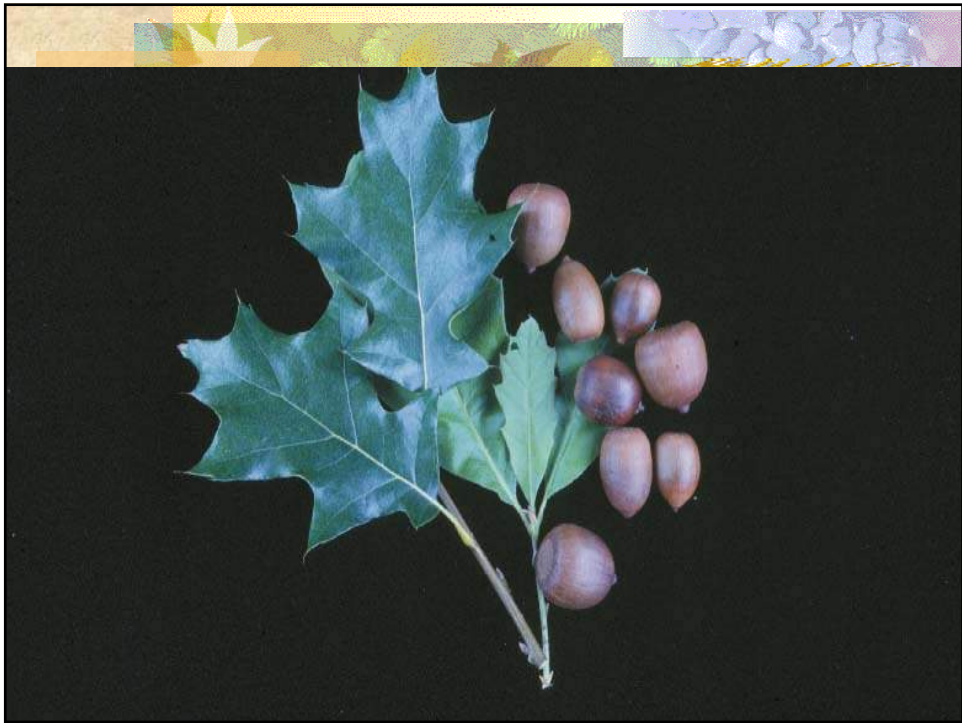




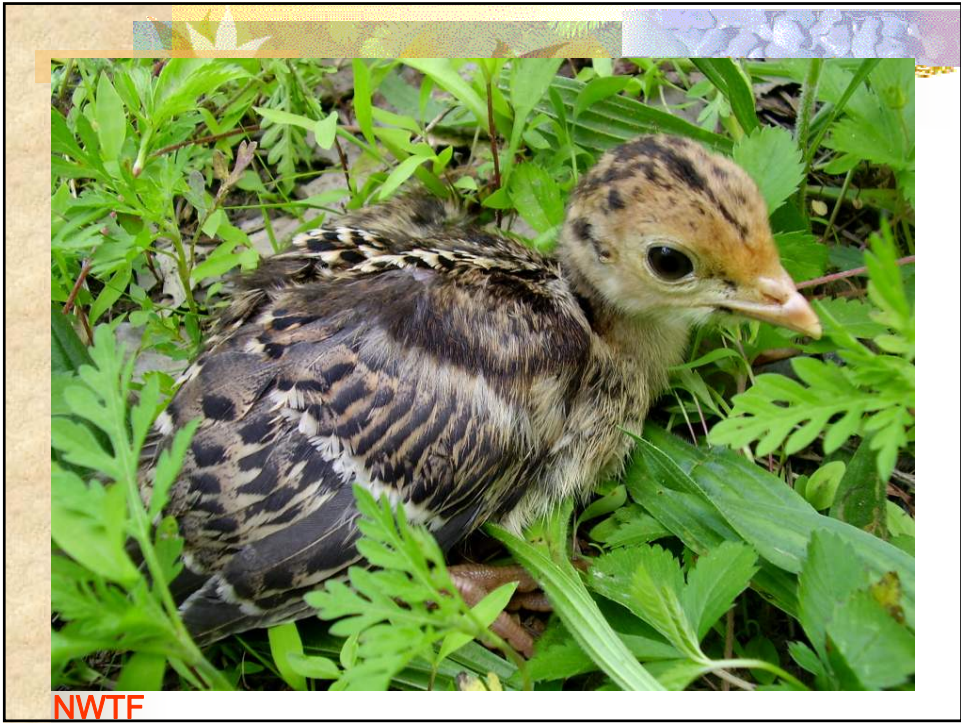






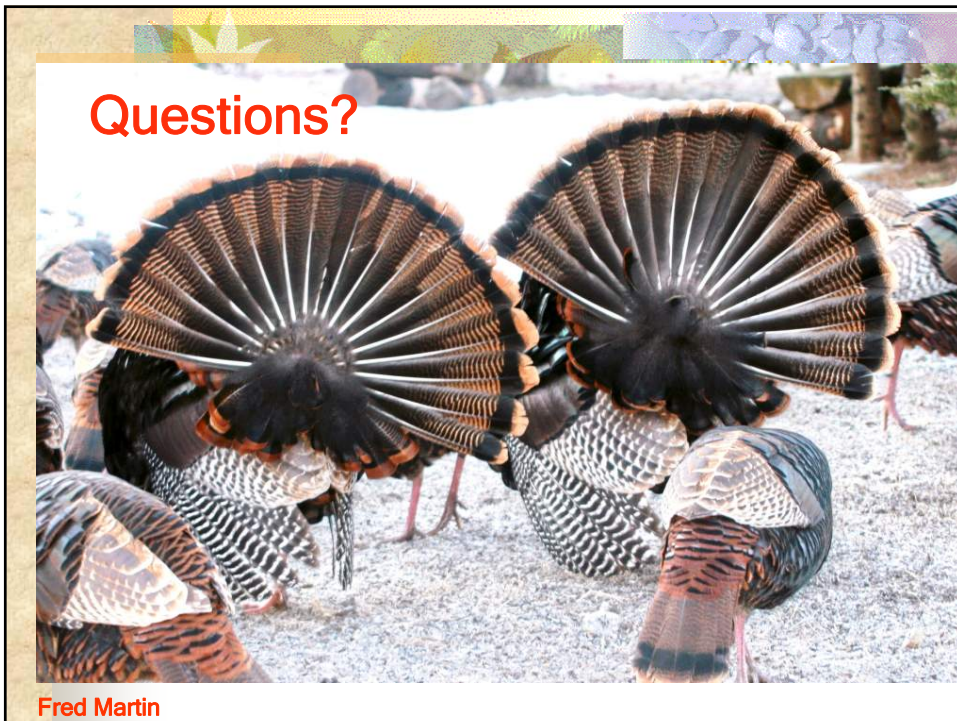








Fred Martin



Fred Martin

