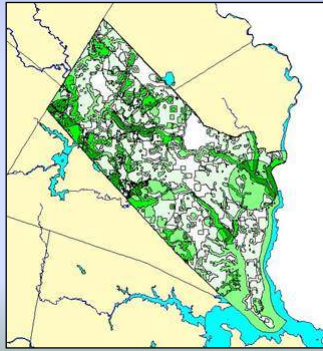


Conservation Planning:

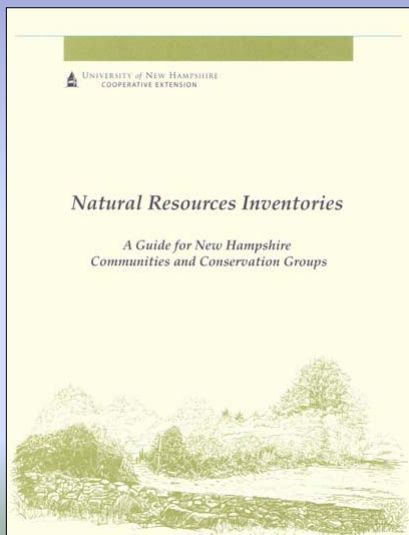
Developing a vision for the future ecological health of an area and the maintenance of farm and managed forest lands

The slide features three small square images arranged horizontally. The first image on the left shows a white bird perched on a thin branch against a clear blue sky. The middle image shows a cluster of bright red flowers, possibly Salvia, with green foliage. The third image on the right shows a rocky riverbank with a dense forest of evergreen trees in the background under a clear sky.

Natural resource inventories: *What and where natural resources are.*



Natural Resource Inventory

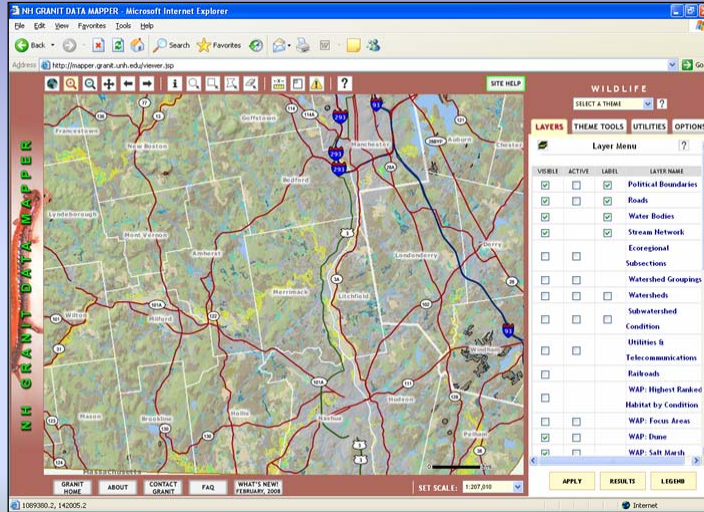


Basic Inventory:
Existing GIS data

Detailed Inventory :
Adding locally produced
data

This book is available from
UNH Cooperative Extension:
<http://extension.unh.edu/>

Granit Datamapper

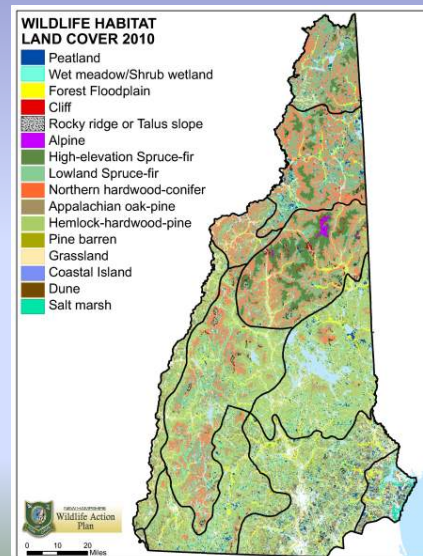


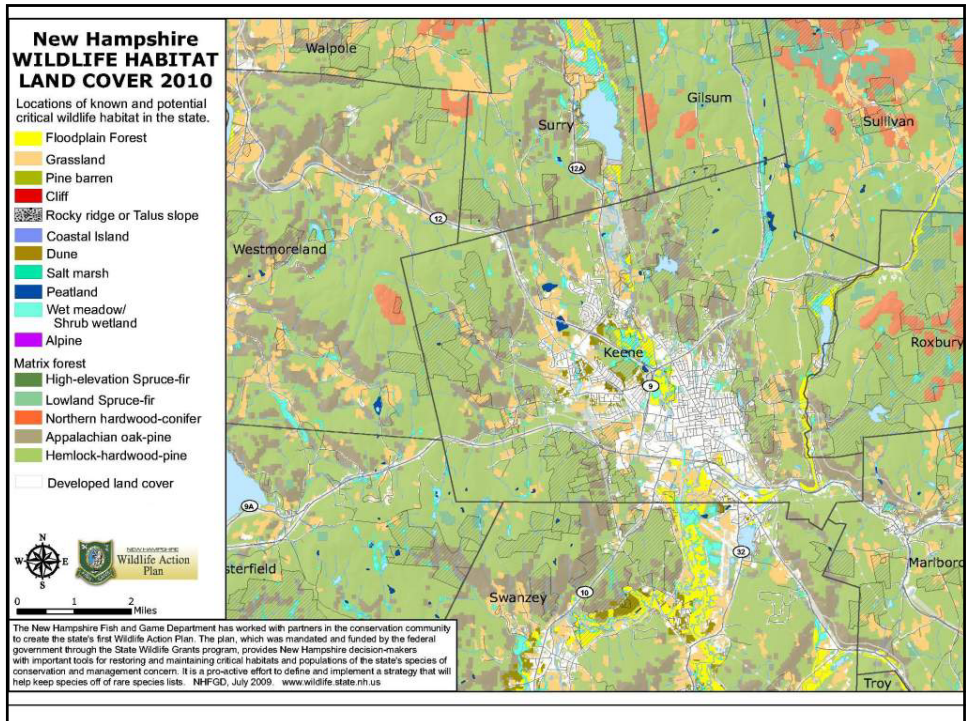
<http://mapper.granit.unh.edu/viewer.jsp>

Wildlife Action Plan Maps

New Hampshire
Wildlife Habitat
Land Cover

Updated in
2010!

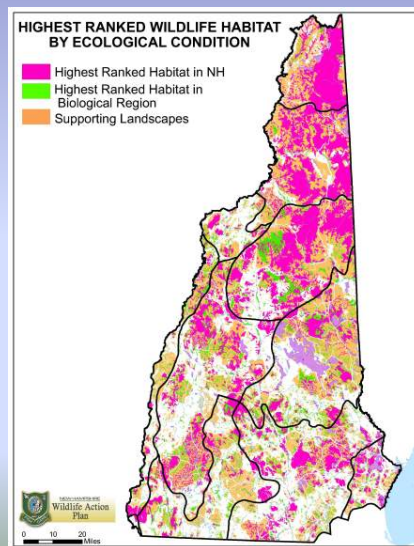


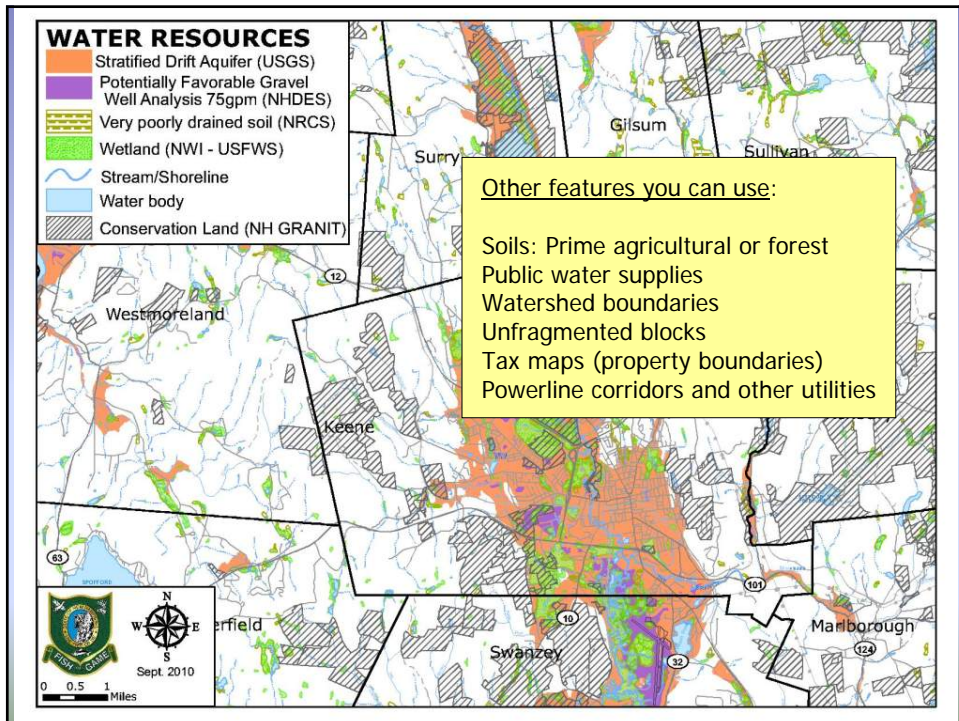
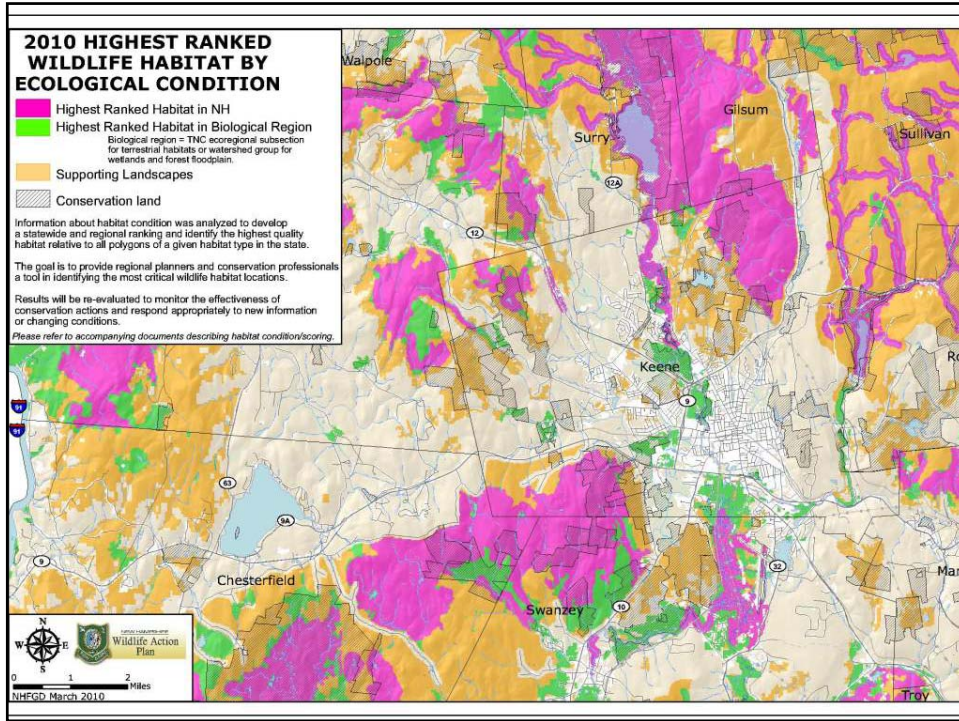


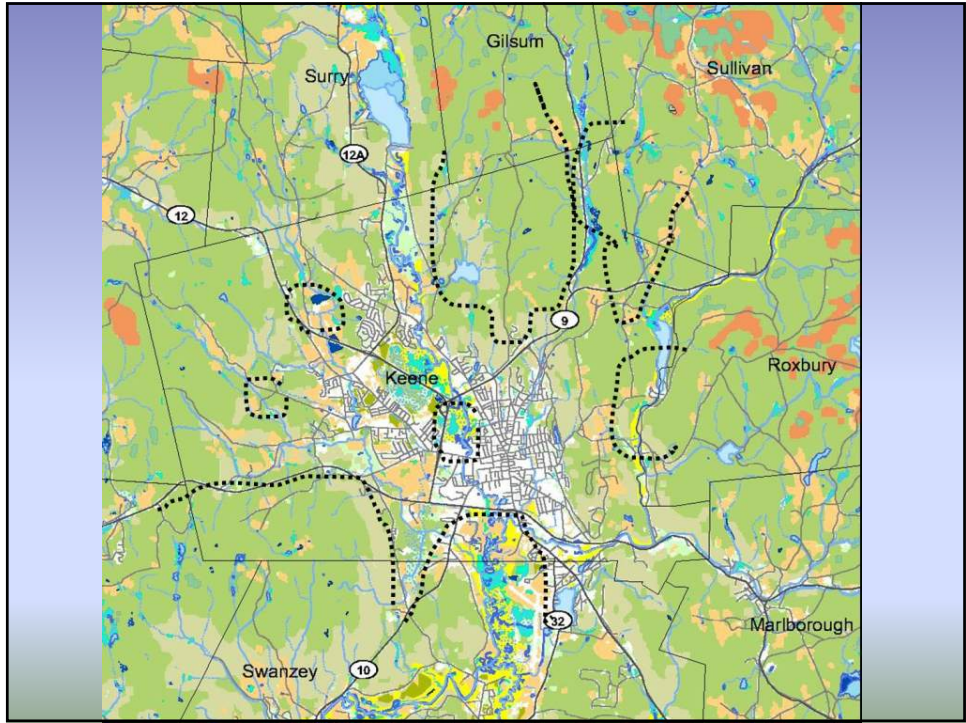
Wildlife Action Plan Maps

Highest Ranked Wildlife Habitat By Ecological Condition

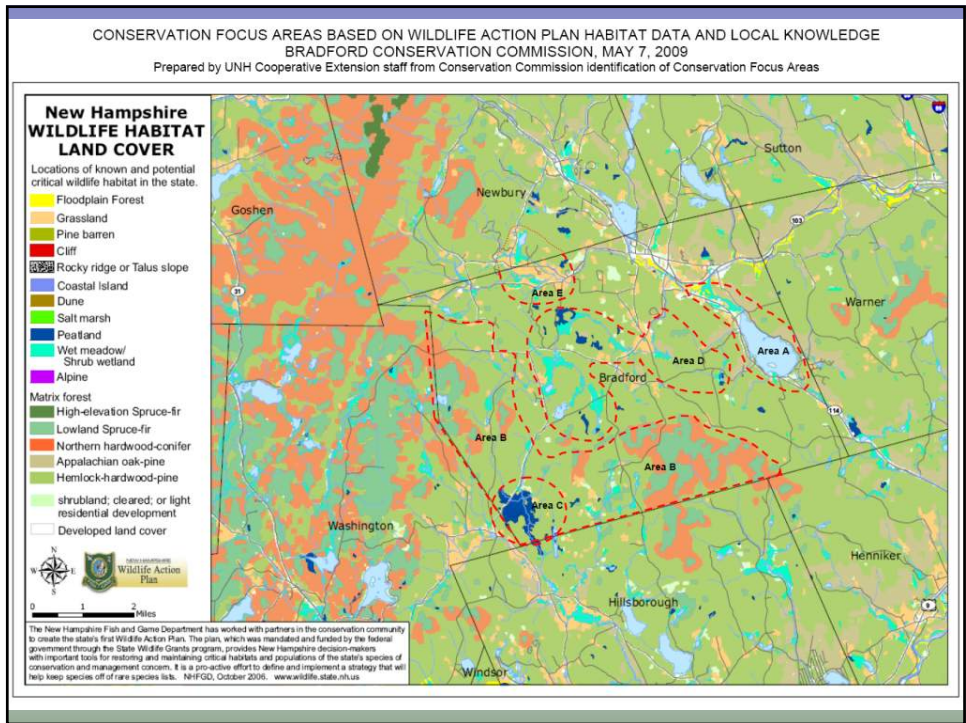
Updated in 2010!





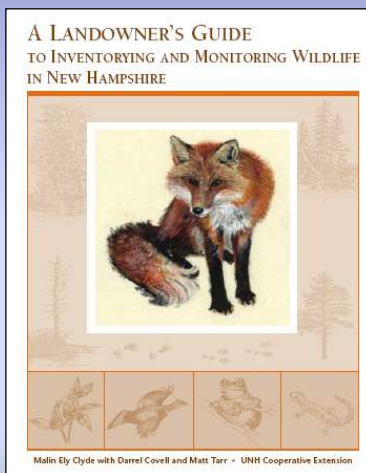


CONSERVATION FOCUS AREAS BASED ON WILDLIFE ACTION PLAN HABITAT DATA AND LOCAL KNOWLEDGE
 BRADFORD CONSERVATION COMMISSION, MAY 7, 2009
 Prepared by UNH Cooperative Extension staff from Conservation Commission Identification of Conservation Focus Areas



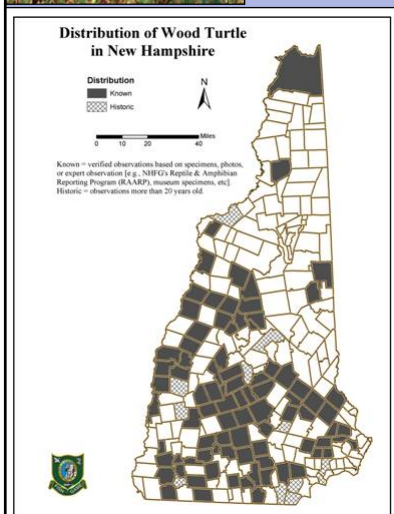
Add Local Data to Your NRI

- Vernal pool identification and assessment
- Wetland assessments
- Town forest inventory
- Trails
- Scenic areas
- Wildlife Inventories
- Other areas of local importance



Wildlife Action Plan Species Profiles

Appendix A



- Species Description
- Status
- Distribution and Abundance
- Known & Potential Habitats
- Protection
- Threats
- Research and Inventory Needs
- Conservation Management Needs
- Bibliography

Analyze the Information



Where are the most important resources?

Why is the resource important?

What are the threats to these resources?

Are there regionally significant resources?

Community Planning Actions

- Writing a Conservation Plan
- Reviewing Land Use Planning Documents
- Establishing Land Use Regulations
- Establishing Zoning Ordinances
- Encouraging Voluntary Practices
- Protecting Land
- Managing Land

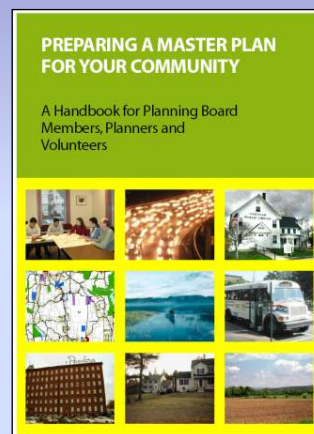
Community Planning Action: Writing a Conservation Plan

WHY CREATE A CONSERVATION PLAN?

- Identify and describe the most important natural features and resources
- Promote conservation of these natural features and resources
- Guide municipal or private voluntary land conservation planning
- Document conservation priorities and recommended policies in a municipal master plan
- Suggest regulatory protection for some features and resources

Community Planning Action: Reviewing Land Use Documents

- Does your Master Plan address natural resources?
- New Hampshire land use law designates the Master Plan as the basis for all municipal land use regulations.



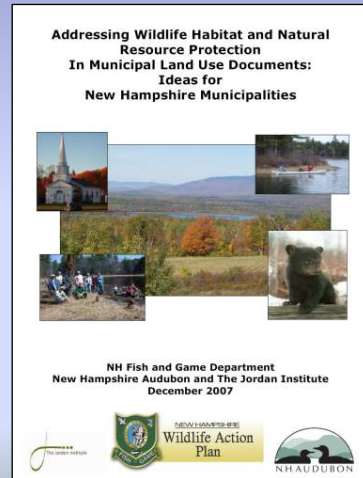
NH Office of Energy and Planning
<http://www.nh.gov/oep/>

Community Planning Action: Reviewing Land Use Documents

- How well are wildlife and habitats protected in your town?
- Hire someone to do this,
- Or do it yourself.

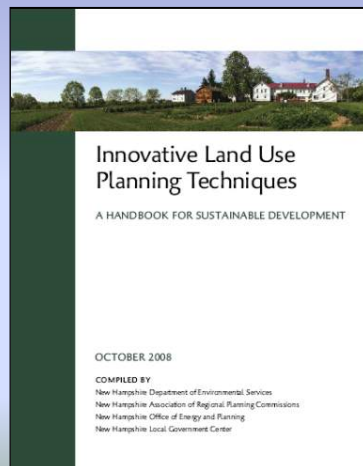


25 topics
www.wildnh.com



Community Planning Action: Establishing Land Use Regulations

Model ordinances and regulations for towns



Topics include:
 Lot size averaging
 Steep slopes and ridgeline protection
 Habitat Management
 Flood hazard area zoning
 Preserving dark skies
 Energy efficient development



www.des.nh.gov

Community Planning Action: Establishing Land Use Regulations

Chapters include:

- Background and Purpose
- Appropriate Circumstances and Context for Use
- Legal Basis and Considerations for NH
- Examples and Outcomes
- Model Language and Guidance for Implementation



Community Planning Action: Establishing Zoning Ordinances

- Town Subdivision Regulations require land owner to provide more information about the natural resources on the parcel
- Conservation Biologist hired
- Portion of site is included in Wildlife Action Plan as *Grasslands Priority Habitat*
- In report WAP habitats and species listed, explanation of WAP priority and surrounding habitats



JLB Properties
Durham, NH
Mast Road Access Study Area



Christopher Kane
Conservation Biologist
11 Donovan Street • Colchester, NH 03301 • 603-648-7972 • kane.crist@comcast.net

Community Planning Actions: Encouraging Voluntary Practices

- Protecting important resources in your town without regulations
- Requires in-depth knowledge of where these resources are (or potentially are) in your town
- Pre-application meetings
- Prior to any plans (and construction), make recommendations about the parcel



Community Planning Action: Land Protection

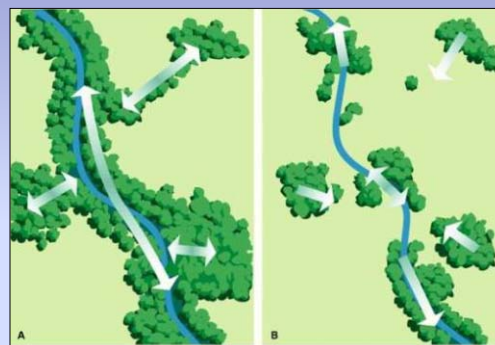


Fig. 2.38 -- Landscapes with (A) high and (B) low degrees of connectivity. A connected landscape structure generally has higher levels of functions than a fragmented landscape.
In Stream Corridor Restoration: Principles, Processes, and Practices (1989)
by the Federal Interagency Stream Restoration Working Group (FISRWG) (15 Federal agencies of the U.S.)

Think landscape scale and
across town and state
boundaries

COMING SOON!

TakingActionForWildlife.org

***An online resource center with all these
plans, documents and
recommendations***



 UNIVERSITY of NEW HAMPSHIRE
COOPERATIVE EXTENSION



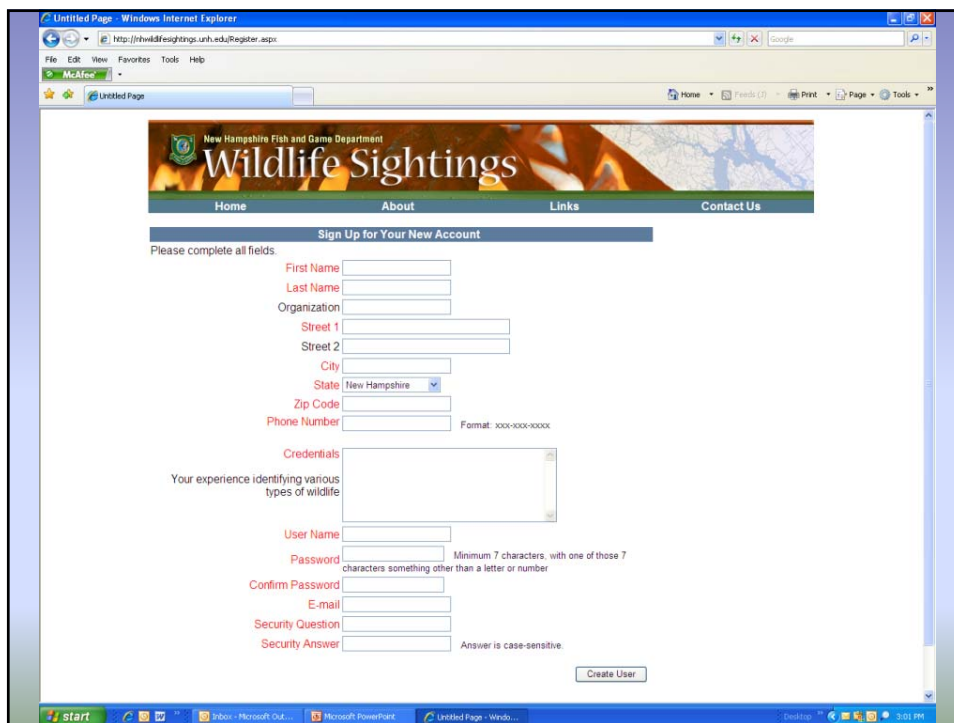


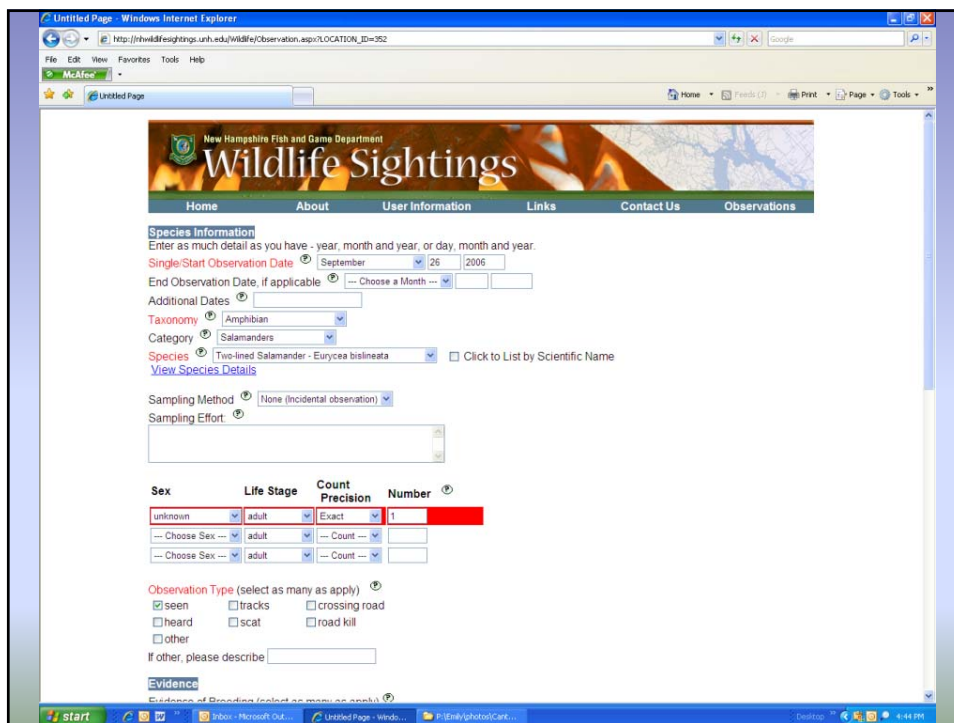
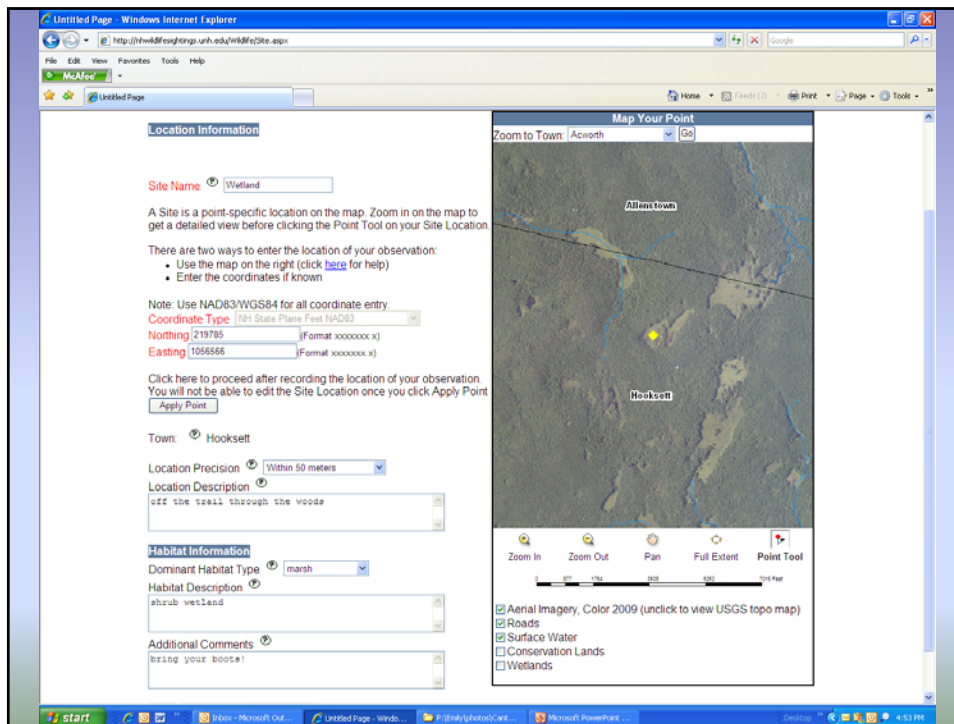
Reporting Data you Collect

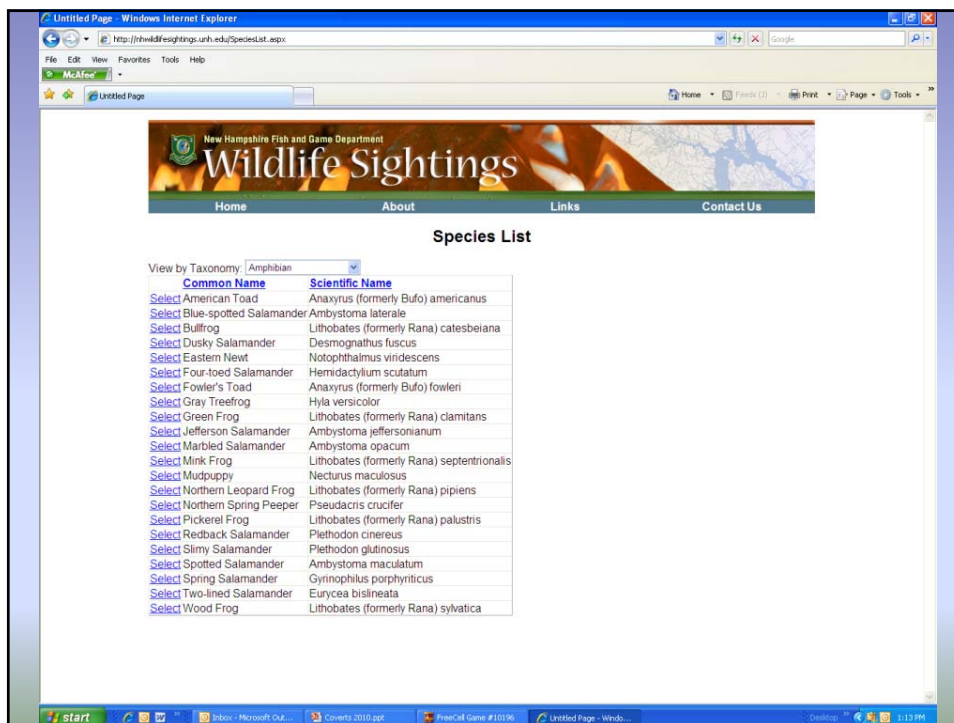
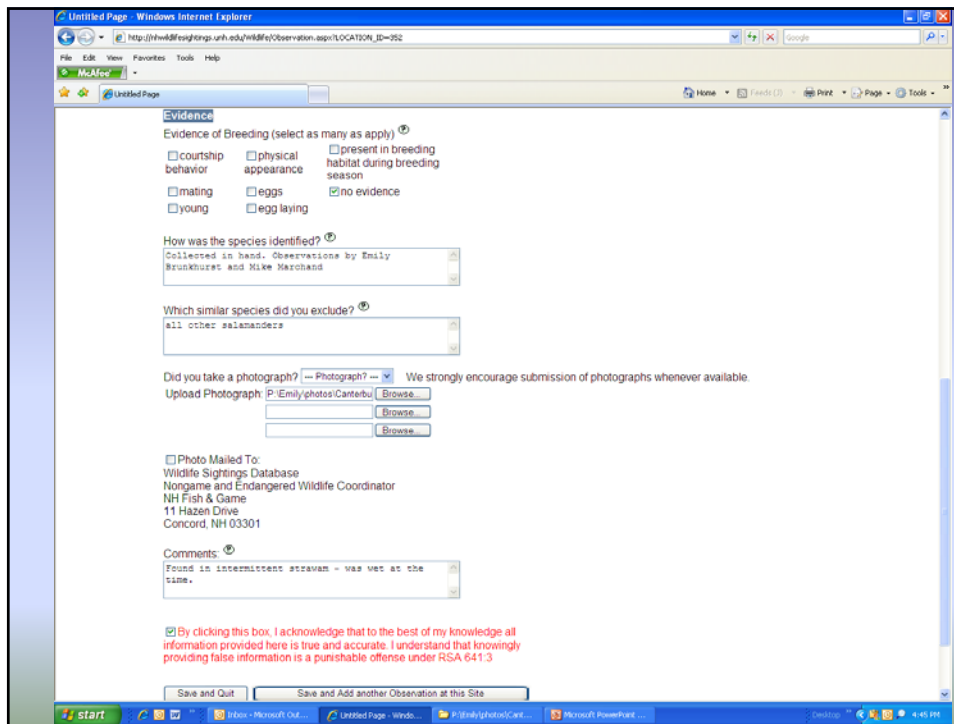
Wildlife Sightings Database

- You report on the distribution of Wildlife Action Plan species.
 - Start documenting now!
- Easy to use online format with map feature and photo uploads.

Three small square images arranged horizontally. Left: A swampy area with dead, skeletal trees in shallow water. Middle: A large, dark beetle on a light-colored rock. Right: A lynx walking through snow.









RAARP

Reptile And Amphibian Reporting Program



- Best reports have a form filled out completely and includes photographs
- Forms, FAQ's, tips, and pictures all found online: www.wildnh.com



NOW REPORT ON WILDLIFE SIGHTINGS DATABASE

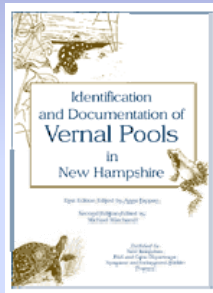
NH REPTILE AND AMPHIBIAN REPORTING PROGRAM (RAARP)

Species: _____ seen heard
 Date/time: _____ photo taken?: Y N
 Stage: adult young larva/tadpole eggs Sex: M F unk
 Number: one # _____ too many to count
 Town: _____ Waterbody: _____
 Species location: _____
 Habitat description and characteristics used to ID species: Use back of slip
 Observer: Name _____ Phone _____
 Address _____
 email address _____
 Send sightings and photos to:
 NHFG - Nongame Program, 11 Hazen Drive, Concord, NH 03301
 email: wildnh@wildlife.state.nh.us
*Maps and photos may be required for rare species validation.



Vernal Pools: What you can do

Learn, identify, and submit your findings at www.wildnh.com



Free Download

The screenshot shows a web browser window displaying the 'Wildlife Profile: Spotted Salamander' page. The page includes a search bar, navigation links (Home, Search, Buy a License, Sign up for e-news, Just for Kids!), and detailed information about the species. The information includes:

- NI Conservation Status:** Not listed.
- State Rank Status:** Widespread and secure.
- Distribution:** Throughout NH.
- Descriptions:** A large dark salamander measuring 4.5-7.5 inches. Has up to 50 round yellow or orange spots arranged irregularly down the back and sides. Base color is generally black or black-steel.
- Commonly Confused Species:** Blue spotted salamander.
- Habitat:** Mixed woodlands with slow moving streams, swamps, or vernal pools. Adults spend their time underground or under logs, boards, or stones.
- Life History:** Warm spring nights trigger movements to breeding pools where jelly masses containing 100-200 eggs are attached to submerged sticks and vegetation. Usually breeds in pools that do not contain predatory fish. Hibernates in the ground or under rotting stumps.
- Conservation Threats:** Loss of upland and vernal pool habitat, road mortality during migratory seasons.
- Distribution map:** Click here for a map showing the towns where this species is reported to occur in NH.

At the bottom of the page, there are navigation links for 'previous' and 'next' species profiles, and a 'Back to Salamanders of N.H.' link.