



# **Adding Restoration to Land Protection Projects**

Jan McClure

Director of Land Protection









# **Floodplain Forests**

- **Imperiled because of rarity**
- **Improve water quality**
- **Reduce flood risk**
- **Wildlife habitat**



- 
- Riparian protection for farmland
  - Recreation

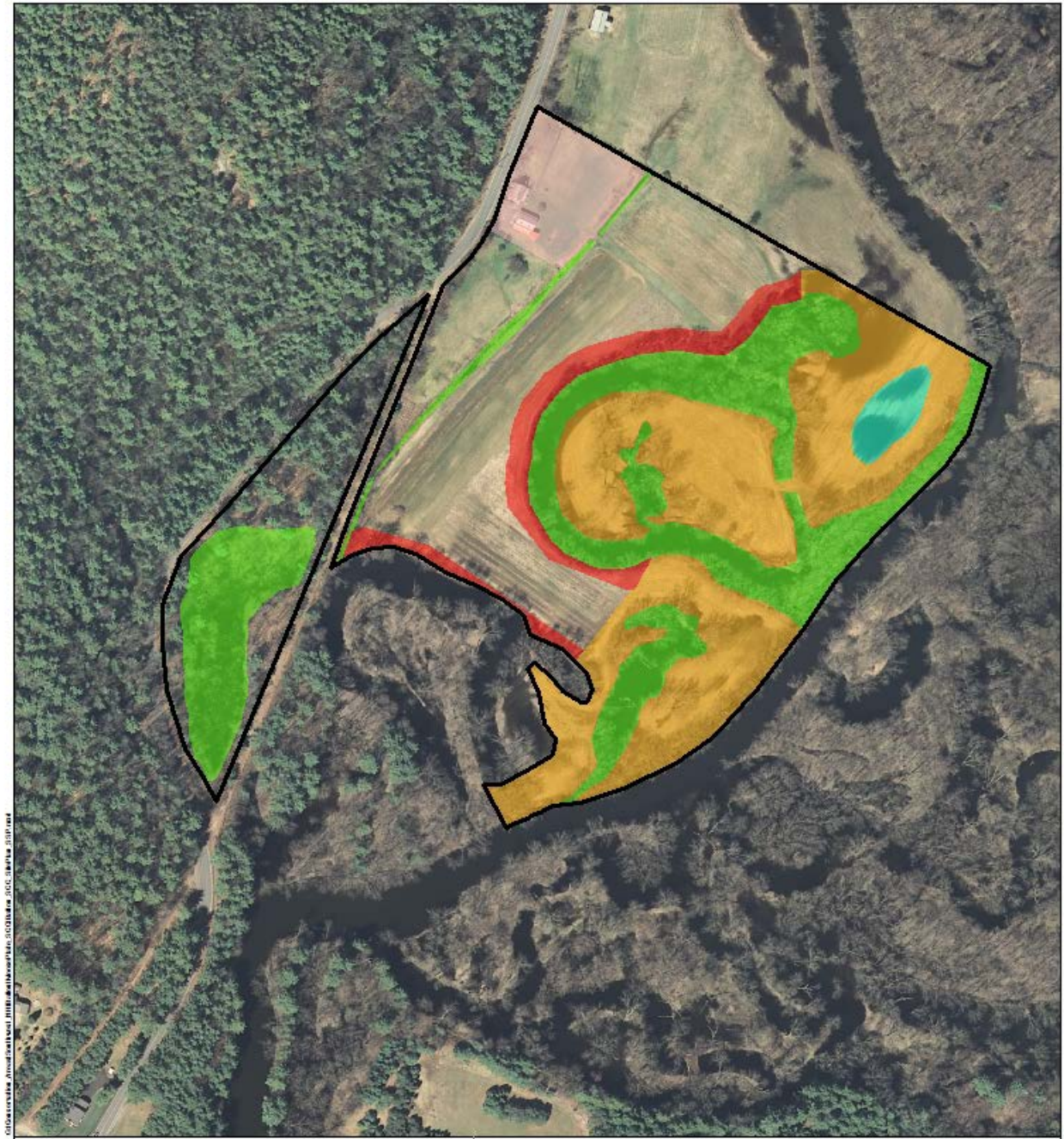














# Budget: Public Sources

Funders		ARM	SCC	Town	NRCS	
Protection		\$100,000		\$20,000		\$120,000
Restoration		\$40,000	24,000	\$10,000	\$76,000	\$150,000



