



New Hampshire's Wildlife Action Plan News & Updates Spring 2008

In This Issue

Wetlands and Wildlife

Do You Recognize Important Wildlife Habitat?

Wildlife Action Plan & GRANIT Update

Take Part in Marbled Salamander Surveys!.

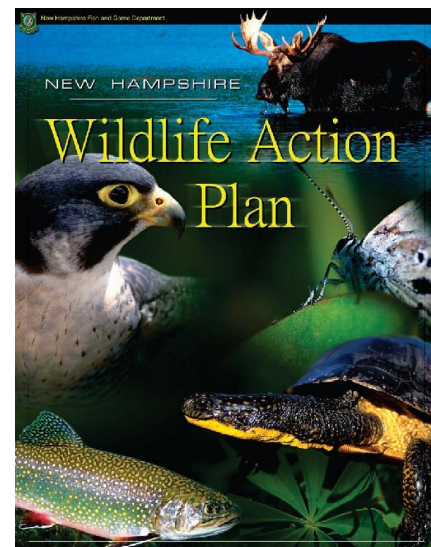
RAARP! Reporting Reptiles and Amphibians

Landowner Incentive Program

Join Teaming with Wildlife

Peatlands - Critical Wildlife Habitats

Welcome to the first issue of *Taking Action for Wildlife*, a joint endeavor by UNH Cooperative Extension and the NH Fish and Game Department. This e-newsletter will keep you up to date with the New Hampshire Wildlife Action Plan workshops, community projects, tools, resources and information that can benefit you and your community. We plan to issue *Taking Action for Wildlife* three times per year. If you do not want to receive this newsletter, please click the *SafeUnsubscribe* button at the end of the newsletter.



Quick Links

[NH's Wildlife Action Plan](#)

[Wildlife Action Plan Workshops](#)

[Wildlife Theme tool on the
GRANIT Data Mapper!](#)

[Wildlife Habitat Brochures](#)

[Teaming with Wildlife](#)

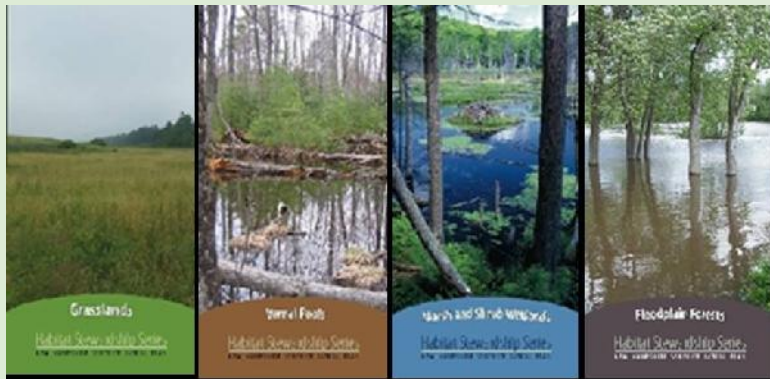
[NHDES Model Ordinances Draft
chapters \(includes Wildlife
Habitat Management\)](#)

Wetlands and Wildlife



The NH Department of Environmental Services Wetlands Bureau has incorporated Wildlife Action Plan data into their new Wetlands Mitigation Program. This program allows developers to pay into a fund if they have altered wetlands totaling less than one acre and demonstrably cannot mitigate the loss on-site or in the watershed. The fees are then used to restore wetlands or surface waters or preserve upland areas adjacent to wetlands elsewhere in the same watershed. One of the criteria that will be used to select mitigation projects includes documenting whether the project is located within a Wildlife Action Plan Highest Ranking Habitat area.

Do You Recognize Important Wildlife Habitat When You See It?



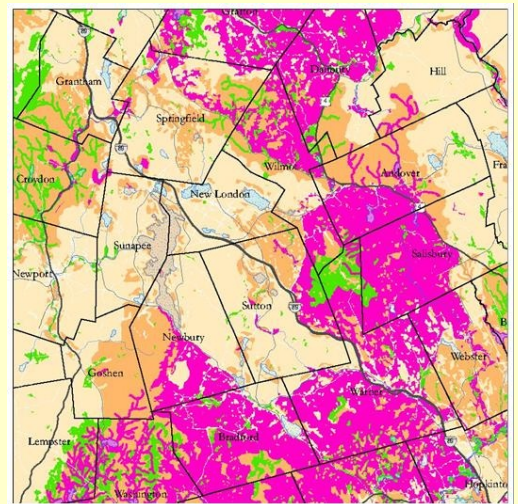
Pools. [Read more here.](#)

UNH Cooperative Extension has published a brochure series to help landowners learn about and help conserve important wildlife habitats found on their land. The **New Hampshire Wildlife Action Plan: Habitat Stewardship Series** brochures, available for download at www.nhwoods.org, cover a variety of habitat types critical for wildlife species at risk in New Hampshire. The first four brochures, available now, focus on Grasslands, Marsh and Shrub Wetlands, Floodplain Forests and Vernal

Wildlife Action Plan & GRANIT Update

A Wildlife theme based on the NH Wildlife Action Plan has been added to the GRANIT Data Mapper! The theme is titled "Wildlife" in the Data Mapper. Check it out and make your own wildlife maps! [Read more here](#)

The Wildlife Action Plan Habitat maps have been available for download on GRANIT for some time, but now the Condition Rankings (WAP tiers) and Conservation Focus Areas data have been added as well. This data will also continue to be available on a CD by request. Any updates to the data will be added to GRANIT as soon as possible. Note that although the data on GRANIT are all grouped under the heading "WAP 2005", these data are in fact up to date. [Read more here](#)



Take Part in Marbled Salamander Surveys! Implementing Wildlife Action Plan Strategy 901



Surveys of endangered marbled salamanders are scheduled for the spring of 2008 in Hollis, Brookline, and Milford to assess the species' distribution in southern NH. Surveys will be targeted in forested areas containing vernal pools that have low road densities. If you know of land that might be suitable for marbled salamanders or if you would like to help with the surveys, contact Brendan Clifford of the Nongame and Endangered Wildlife Program at 603-271-0463 or brendan.j.clifford@wildlife.nh.gov.... [Read more here](#)

RAARP! Reporting Reptiles and Amphibians

Putting the Wildlife Action Plan to Work!

Appendix A, Part 3 of the Wildlife Action Plan provides a profile for all of the Reptiles and Amphibians that are in greatest need of conservation in New Hampshire. For every species there is a map showing the communities in which that species is known to occur. Blank towns on the maps indicate communities where a species has not been reported. However, this doesn't mean that the reptile or amphibian doesn't occur in that town! While a blank could represent a true gap in where that species occurs in NH,



more often it may just indicate a gap in the data - simply that no one has reported their observations of that species in a particular town. You can help fill in these gaps by reporting your observations of reptiles and amphibians to the Reptile and Amphibian Reporting Program (RAARP), coordinated by the New Hampshire Fish and Game Nongame & Endangered Wildlife Program. [Read more here](#)



Landowner Incentive Program Protects Critical Wildlife Habitats

Since 2006, more than 6,500 acres of important wildlife habitats have been protected with funding from the NH Landowner Incentive Program (LIP). The LIP is a federally funded program, administered by the NH Fish and Game Department, that protects and restores habitats on private lands to benefit plant and animal species determined to be at-risk and in need of conservation. In 2006 and 2007, NH Fish & Game awarded LIP funds to nine projects conserving wildlife habitats. [Read more here](#)



Join Teaming with Wildlife

Teaming with Wildlife is a coalition of more than 5,700 organizations supporting increased public funding for wildlife conservation and related education and recreation. Join Teaming with Wildlife as we build momentum to ensure that state wildlife agencies and their conservation partners have the funding they need to fully implement their wildlife action plans, conserving wildlife and natural areas for future generations. New Hampshire's Teaming with Wildlife members have the opportunity to take on a variety of roles - as advocates for dedicated federal funding as well as working to develop tactics for increasing state funding for wildlife. Add your group's voice to this growing list by visiting www.teaming.com. It costs nothing to join and it's a great way to connect with other wildlife supporters in New Hampshire. For more information on NH's Teaming With Wildlife Coalition, contact Judy Silverberg at judith.k.silverberg@wildlife.nh.gov

Peatlands - Critical Wildlife Habitats



New Hampshire's landscape is a rich natural heritage that includes vast stretches of representative native forest types, wetlands, streams and ponds as well as pockets of rare and unusual plants, animals, and natural communities. Among these rare natural communities are wetlands called peatlands, a term that encompasses fens and bogs. Peatlands are identified as critical wildlife habitats in the NH Wildlife Action Plan. The NH Wildlife Action Plan identifies threats to peatlands as: "development, altered hydrology (amount and flow of water), non-point source pollutants such as road salt, lawn fertilizers, and pesticides and unsustainable forest harvesting." [Read more here](#)

Photo Credits: Banner photos (Ben Kimball, and NH Fish & Game), Marbled Salamander (Mike Marchand), Pickerel Frog and Leopard Frog (NH Fish & Game), Wetland (Frank Mitchell), Peatland (Ben Kimball).