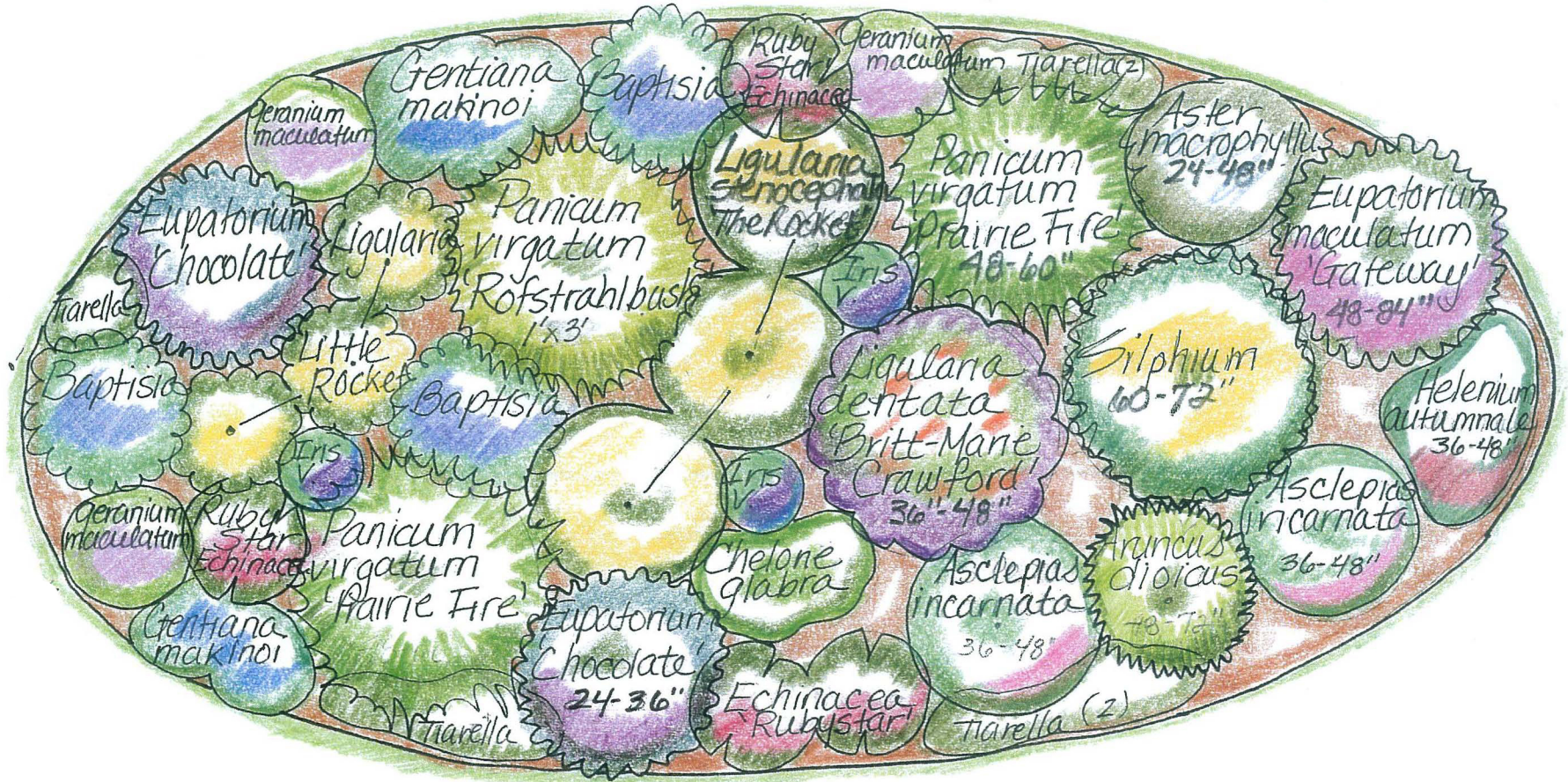


Rain Garden Sketch

by

Lauren Chase-Rowell



Portsmouth, NH

Plant List

	A	B	C	D	E
1	Quantity	Name	Native	Color	Bloom Season
2					
3	3	<i>Baptisia</i>	Y	Bl	May
4	1	<i>Aruncus dioicus</i>	Y	Wh	June
5	2	<i>Asclepias incarnata</i>	Y	P	July
6	1	<i>Aster macrophyllus</i>	Y	Wh-Bl	Aug-Sept
7	2	<i>Chelone glabra</i>	Y	Wh	July
8	1	<i>Eupatorium 'Gateway'</i>	Y	Mauve	Aug-Sept
9	2	<i>Eupatorium 'Chocolate'</i>	Y	W	Sept-Oct
10	4	<i>Echinacea 'Ruby Star'</i>	Y	Pink	June-Sept
11	5	<i>Gentiana makmoi 'Royal Blue'</i>	N	Bl	Aug-Oct
12	3	<i>Geranium maculatum</i>	Y	Lilac	May-June
13	1	<i>Helenium autumnale</i>	Y	Brick Red	July-Sept
14	3	<i>Iris versicolor</i>	Y	Bl-Lilac	June
15	1	<i>Ligularia 'The Rocket'</i>	N	Yell	July-Sept
16	3	<i>Ligularia 'Little Rocket'</i>	N	Yell	July-Aug
17	1	<i>Ligularia 'Britt-Marie Crawford'</i>	N	Orange	Aug-Sept
18	1	<i>Panicum virgatum 'Rotstrahlbush'</i>	Y	Purp	Aug-Oct
19	2	<i>Panicum virgatum 'Prairie Fire'</i>	Y	Purp	July-Aug
20	1	<i>Silphium</i>	Y	Yell	Aug-Sept
21	7	<i>Tiarella cordifolia</i>	Y	Wh	May-June