



Specialty Summer Squash Demonstration Planting – Univ. of New Hampshire – 2010

Seeded: 5/17/10, Transplanted: 6/4/10.

Grown in Durham, NH in un-replicated design, 1 plot per variety, 6 plants per plot. Plants were spaced 18" apart in rows 7' between centers on raised beds covered with Biotelo biodegradable black plastic mulch. One application of carbaryl was made to control striped cucumber beetle.

Harvest: Fruits were harvest every Mon, Wed and Fri from July 2 through August 20. All fruit were harvested on each date. While fruit with blossom end rot or other serious defects were discarded, fruits were not graded for size/uniformity.

Cultivar ¹	Type	Color	No. fruit per plot (6 plants)	Weight (lbs) per plot (6 plants)	Avg. fruit weight (lbs)
Eight Ball (H)	Ball	Dark green	92	55.0	0.60
Cue Ball (SW)	Ball	Light green	129	65.3	0.51
Geode (JSS)	Ball	Light green	114	58.7	0.52
Ronde de Nice (HM)	Ball	Light green	102	52.8	0.52
Floridor (JSS)	Ball	Bright yellow	93	53.7	0.58
One Ball (SW)	Ball	Bright yellow	132	52.9	0.40
Yellow Scallopini (HM)	Scallop	Bicolor	87	24.2	0.28
Flying Saucer (H)	Scallop	Bicolor	106	59.2	0.56
Starship (JSS)	Scallop	Dark green	114	43.5	0.38
Bennings Green Tint (HM)	Scallop	Light green	119	50.2	0.42
Peter Pan (H)	Scallop	Light green	104	34.9	0.36
Sunburst (H)	Scallop	Yellow	175	60.0	0.34

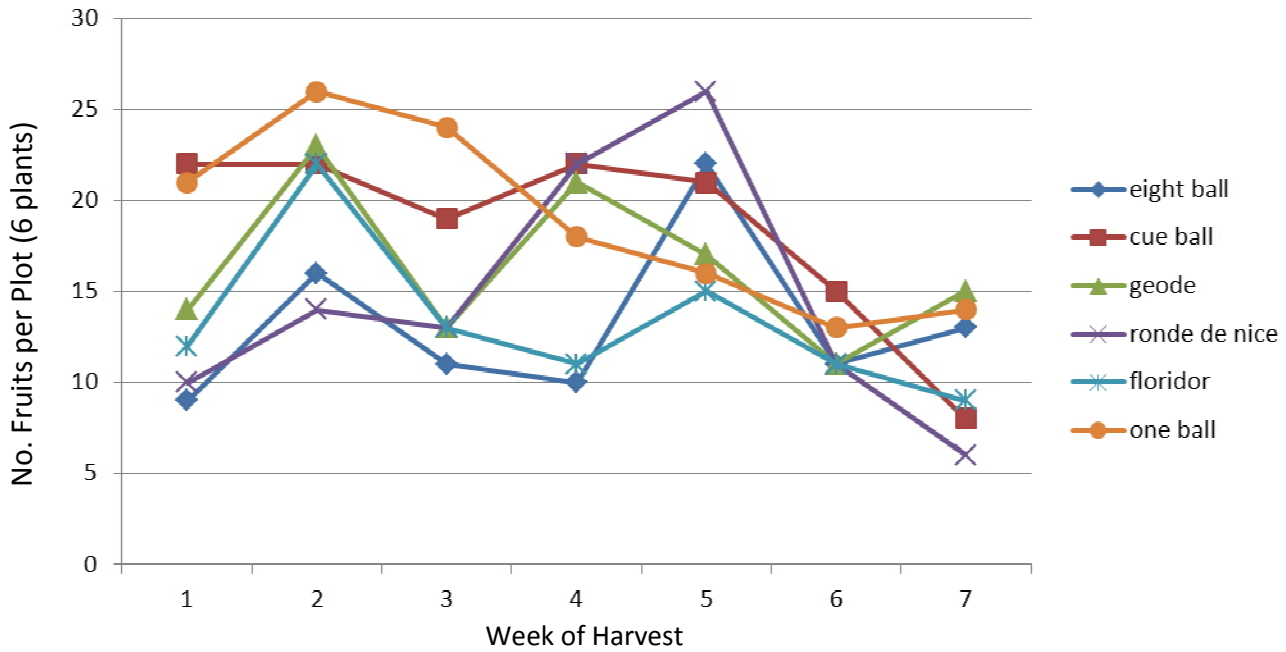
¹ Seeds provided by or purchased from Harris Seeds (H), High Mowing Seeds (HM), Johnny's Selected Seeds (JSS), and Seedway Seeds (SW).

Summary: Because this experiment was not replicated, we cannot determine whether the differences between varieties were statistically significant, or likely to reflect real differences.

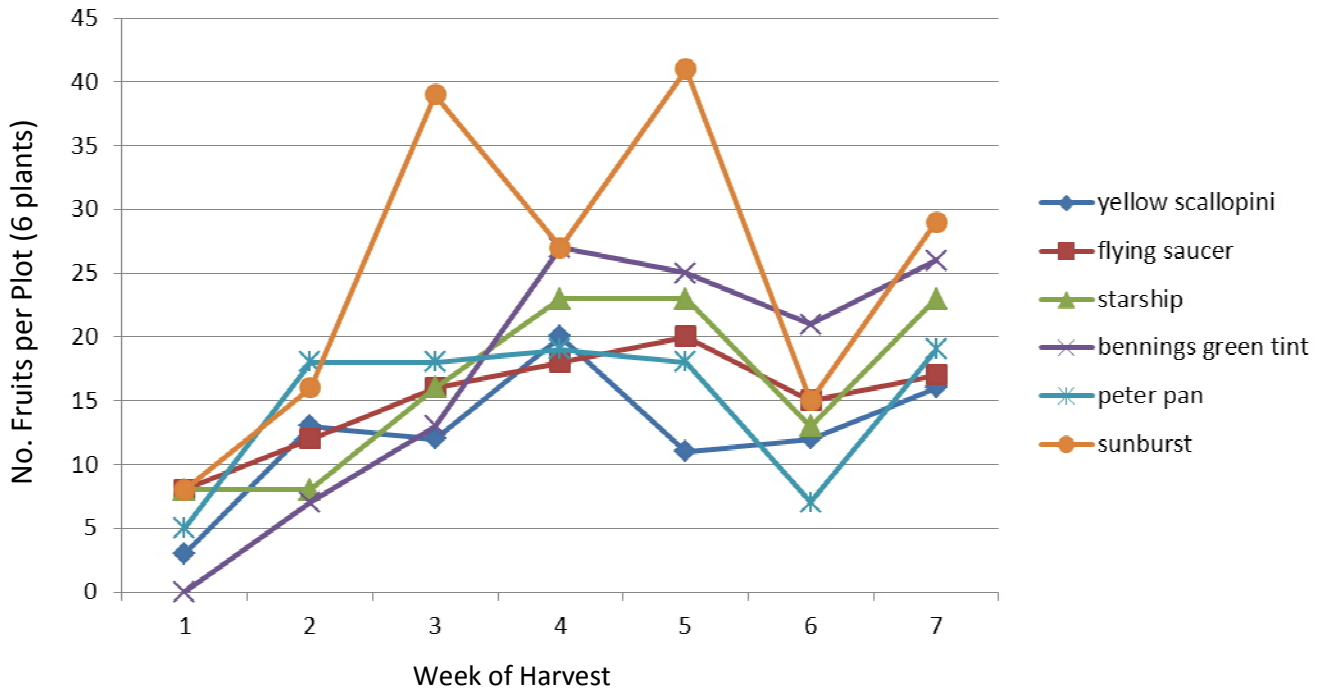
Interesting observations came from the graphs showing yields of fruit over time. On the whole, the scallop varieties were later to fruit by a week, compared to the round-fruited varieties. The round-fruited varieties oversized quickly (see the higher average fruit weight), making it difficult to harvest fruits of uniform size, and making regular harvest very important. Sunburst was the only true yellow scallop, and it also had very high yields. Of the two bicolor scallops, Flying Saucer was more attractive, with dark green and bright yellow as opposed to the lime green and yellow of Yellow Scallopini. Of the three light green ball types, Cue Ball was uniform green, and Geode and Ronde de Nice showed dark and lighter green patterns. All three were attractive.

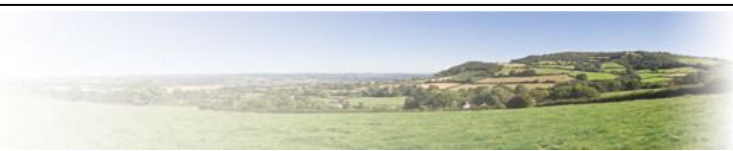


Yields over time of varieties with round-shaped fruits



Yields over time of varieties with scallop-shaped fruits





note: Bennings' Green Tint not shown because no fruit were available at time of photos