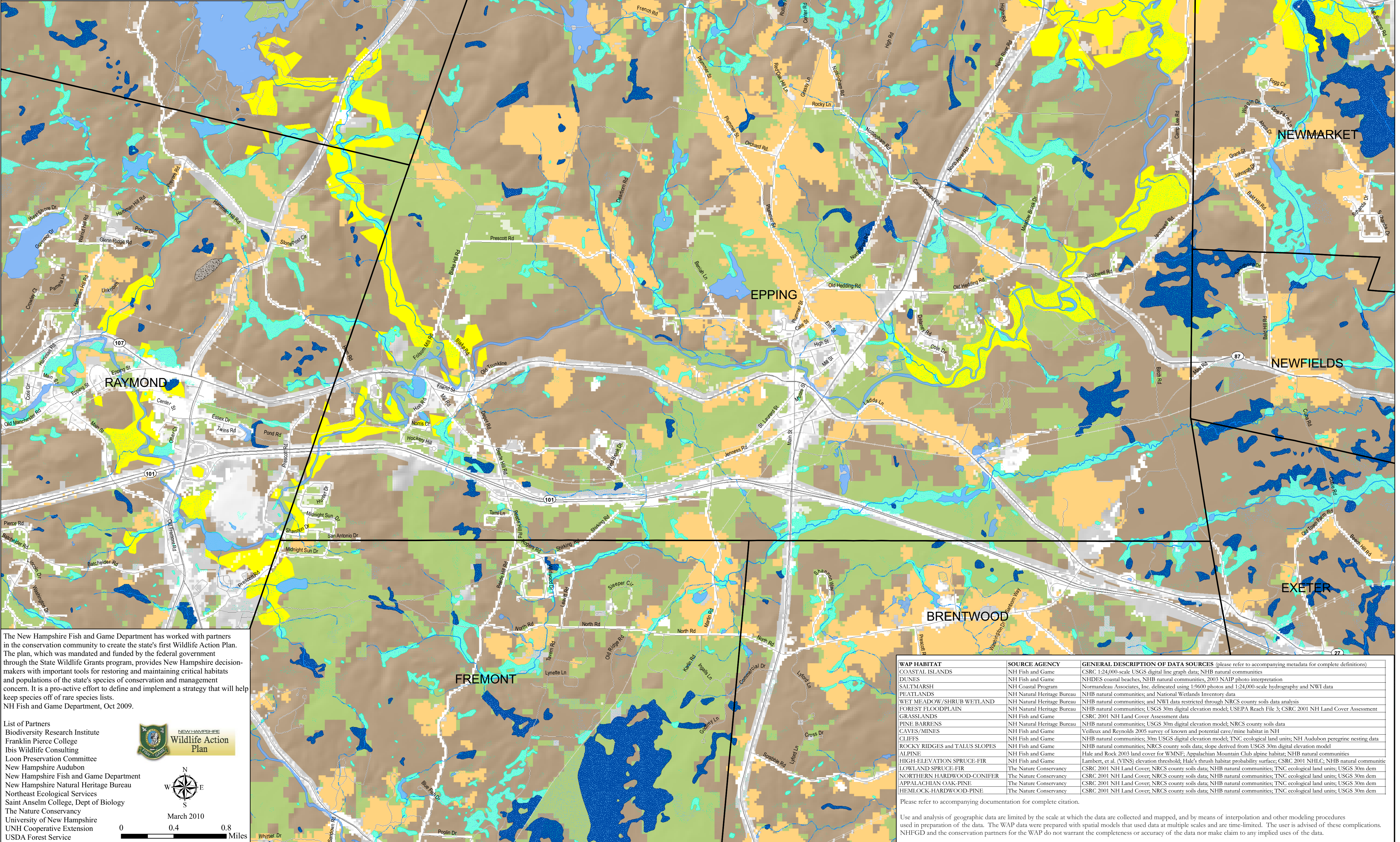


2010 NEW HAMPSHIRE WILDLIFE HABITAT LAND COVER

Locations of known and potential critical wildlife habitat in the state.

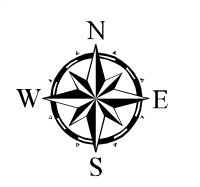
- | | | | |
|--|---------------------------|--|----------------------------|
| | Coastal Island | | Cliff |
| | Dune | | Rocky ridge or Talus slope |
| | Salt marsh | | Alpine |
| | Peatland | | High-elevation Spruce-fir |
| | Wet meadow/ Shrub wetland | | Lowland Spruce-fir |
| | Forest Floodplain | | Northern hardwood-conifer |
| | Grassland | | Appalachian oak-pine |
| | Pine barren | | Hemlock-hardwood-pine |

List of critical wildlife habitats was based on the habitat requirements of associated wildlife species of concern in the state identified by the NH Ecological Reserve System Project (renamed Living Legacy Project). The final habitat list was developed by biologists working on the WAP based on expert review. The wildlife habitat list was then cross-referenced with the NH Natural Heritage Bureau's natural communities classification. An aquatic classification system based on watershed and lake analytical stratification was completed by The Nature Conservancy and is currently under review by NH Fish and Game biologists. Open ocean, vernal pool, and shrublands/early successional habitat assessments were not completed.

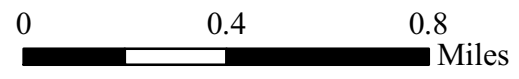


The New Hampshire Fish and Game Department has worked with partners in the conservation community to create the state's first Wildlife Action Plan. The plan, which was mandated and funded by the federal government through the State Wildlife Grants program, provides New Hampshire decision-makers with important tools for restoring and maintaining critical habitats and populations of the state's species of conservation and management concern. It is a pro-active effort to define and implement a strategy that will help keep species off of rare species lists.
NH Fish and Game Department, Oct 2009.

- List of Partners
- Biodiversity Research Institute
 - Franklin Pierce College
 - Ibis Wildlife Consulting
 - Loon Preservation Committee
 - New Hampshire Audubon
 - New Hampshire Fish and Game Department
 - New Hampshire Natural Heritage Bureau
 - Northeast Ecological Services
 - Saint Anselm College, Dept of Biology
 - The Nature Conservancy
 - University of New Hampshire
 - UNH Cooperative Extension
 - USDA Forest Service



March 2010



| WAP HABITAT | SOURCE AGENCY | GENERAL DESCRIPTION OF DATA SOURCES (please refer to accompanying metadata for complete definitions) |
|-------------------------------|----------------------------|--|
| COASTAL ISLANDS | NH Fish and Game | CSRC 1:24,000-scale USGS digital line graph data; NHB natural communities |
| DUNES | NH Fish and Game | NHDES coastal beaches; NHB natural communities; 2003 NADP photo interpretation |
| SALT MARSH | NH Coastal Program | Normandeau Associates, Inc. delineated using 1:9600 photos and 1:24,000-scale hydrography and NWI data |
| PEATLANDS | NH Natural Heritage Bureau | NHB natural communities; and National Wetlands Inventory data |
| WET MEADOW/SHRUB WETLAND | NH Natural Heritage Bureau | NHB natural communities; and NWI data restricted through NRCS county soils data analysis |
| FOREST FLOODPLAIN | NH Natural Heritage Bureau | NHB natural communities; USGS 30m digital elevation model; US EPA Reach File 3; CSRC 2001 NH Land Cover Assessment |
| GRASSLANDS | NH Fish and Game | CSRC 2001 NH Land Cover Assessment data |
| PINE BARRENS | NH Natural Heritage Bureau | NHB natural communities; USGS 30m digital elevation model; NRCS county soils data |
| CAVES/MINES | NH Fish and Game | Vellex and Reynolds, 2005 survey of known and potential cave/mine habitat in NH |
| CLIFFS | NH Fish and Game | NHB natural communities; 30m USGS digital elevation model; TNC ecological land units; NH Audubon peregrine nesting data |
| ROCKY RIDGES and TALUS SLOPES | NH Fish and Game | NHB natural communities; NRCS county soils data; slope derived from USGS 30m digital elevation model |
| ALPINE | NH Fish and Game | Hale and Rock 2003 land cover for WMNF; Appalachian Mountain Club alpine habitat; NHB natural communities |
| HIGH-ELEVATION SPRUCE-FIR | NH Fish and Game | Lambert, et al. (VINS) elevation threshold; Hale's thrush habitat probability surface; CSRC 2001 NHLC; NHB natural communities |
| NORTHERN HARDWOOD-CONIFER | The Nature Conservancy | CSRC 2001 NH Land Cover; NRCS county soils data; NHB natural communities; TNC ecological land units; USGS 30m dem |
| APPALACHIAN OAK-PINE | The Nature Conservancy | CSRC 2001 NH Land Cover; NRCS county soils data; NHB natural communities; TNC ecological land units; USGS 30m dem |
| HEMLOCK-HARDWOOD-PINE | The Nature Conservancy | CSRC 2001 NH Land Cover; NRCS county soils data; NHB natural communities; TNC ecological land units; USGS 30m dem |

Please refer to accompanying documentation for complete citation.
Use and analysis of geographic data are limited by the scale at which the data are collected and mapped, and by means of interpolation and other modeling procedures used in preparation of the data. The WAP data were prepared with spatial models that use data at multiple scales and are time-limited. The user is advised of these complications. NHFGD and the conservation partners for the WAP do not warrant the completeness or accuracy of the data nor make claim to any implied uses of the data.