

HIGHEST RANKED WILDLIFE HABITAT
BY ECOLOGICAL CONDITION 2010

Highest Rank Habitat by Condition in NH

Highest Rank Habitat by Condition in Biological Region

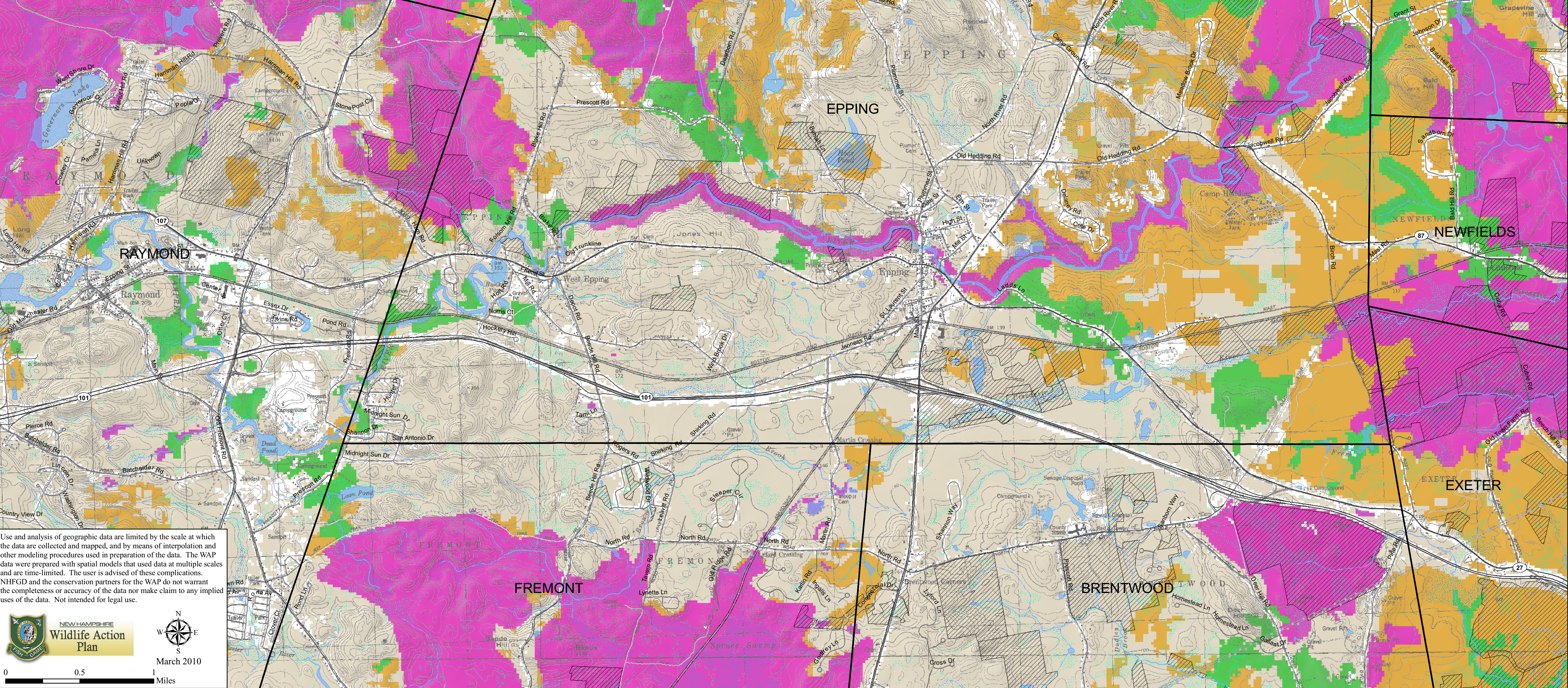
Supporting Landscapes

Conservation/or public land

Biological region = TNC ecoregional subsection for terrestrial habitats or watershed group for wetlands and floodplain forest.

HABITAT	TIER	LEVEL
Matrix Forests	1	Top 15% in NH by area
	2	Top 15% in Subsection by area
	3	Top 30% in Subsection by area
Pine Barrens	1	Top 10% in NH by area
	2	Top 50% in Subsection by area
Rocky Ridges/Talus Slopes	1	Top 10% in NH by area
	2	Top 50% in Subsection by area
Cliffs	1	Top 10% in NH by quantity
	2	Top 50% in Subsection by quantity
Grassland	1	Top 10% in NH by area
	2	Top 50% in Subsection by area
Wet Meadow/Shrub Wetland	1	Top 10% in NH by area
	2	Top 50% in Watershed Group by area
Peatland	1	Top 10% in NH by area
	2	Top 50% in Watershed Group by area
Floodplain Forest	1	Top 10% in NH by area
	2	Top 100% in Watershed Group by area
Watersheds (HUC12s)	1	Top 15% in Watershed Group by area
	2	Top 30% in Watershed Group by area
Lakes/Ponds	1	Top 10 by lake class by quantity
Saltmarsh	1	100%
Coastal Islands	1	100%
Dunes	1	100%
Alpine	1	100%
TNC forest blocks	3	Top tier per TNC
Aquatic Features	3	p/a of S1,S2,WAP,other aquatic wildlife
Animal Occurrences	3	p/a of S1,S2,WAP wildlife
Ecological Features (NHB)	3	ecological important areas per NHB

Information about habitat condition was analyzed to develop a statewide and regional ranking and identify the highest condition habitat relative to all polygons of a given habitat type in the state. The goal is to provide regional planners and conservation professionals a tool in identifying the most critical wildlife habitat locations. Tiers were determined by assigning threshold values to each habitat type. The Tier 1 rating was given to areas that contain the highest condition rank in the state. Tier 2 areas contain the highest condition rank in the biological region (defined by the TNC Ecoregional Subsection for terrestrial habitats or the Watershed Group for wetland and aquatic habitats), Tier 3 includes other significant factors such as watersheds containing top-ranked condition stream and lakes, large forest blocks of statewide significance, or specific animal, plant and natural community occurrences identified by NHFG as critically imperiled or by NHHNB as highest importance. Each habitat polygon has attributes showing the condition scores so that local communities can set their own condition thresholds for habitats of local importance. Results will be re-evaluated to monitor the effectiveness of conservation actions and respond appropriately to new information or changing conditions.



Use and analysis of geographic data are limited by the scale at which the data are collected and mapped, and by means of interpolation and other modeling procedures used in preparation of the data. The WAP data were prepared with spatial models that used data at multiple scales and are time-limited. The user is advised of these complications. NHFGD and the conservation partners for the WAP do not warrant the completeness or accuracy of the data nor make claim to any implied uses of the data. Not intended for legal use.

NEW HAMPSHIRE
Wildlife Action
Plan

March 2010

00.51

Miles