

## MANAGING FOREST HEALTH ON NH STATE LANDS

Will Guinn, Regional Forester  
NH Division of Forests and Lands  
Forest Management Bureau, South Region

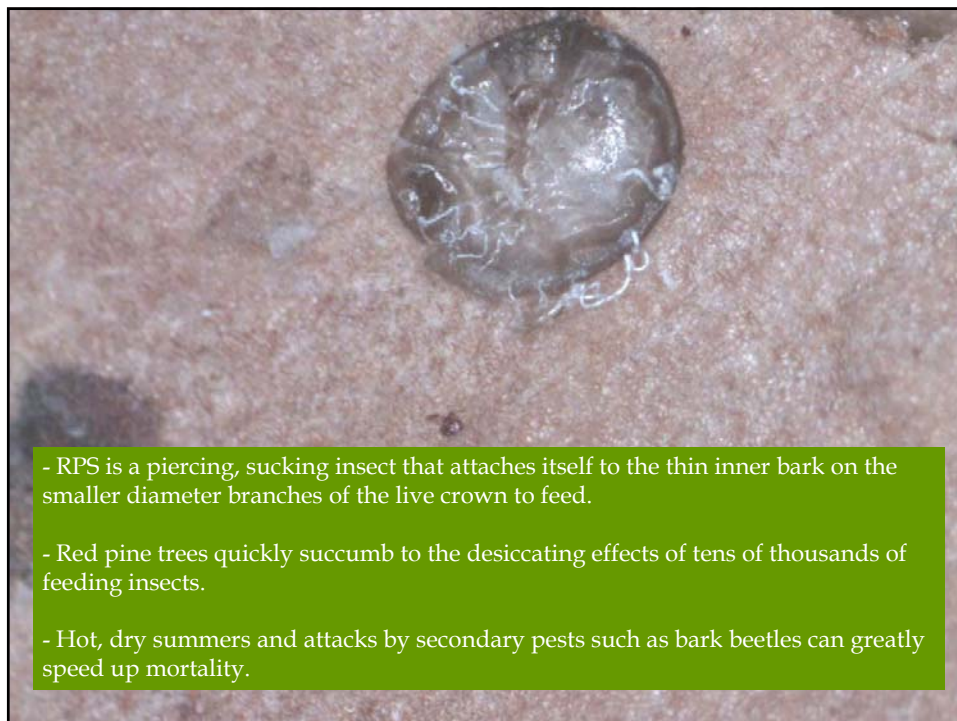
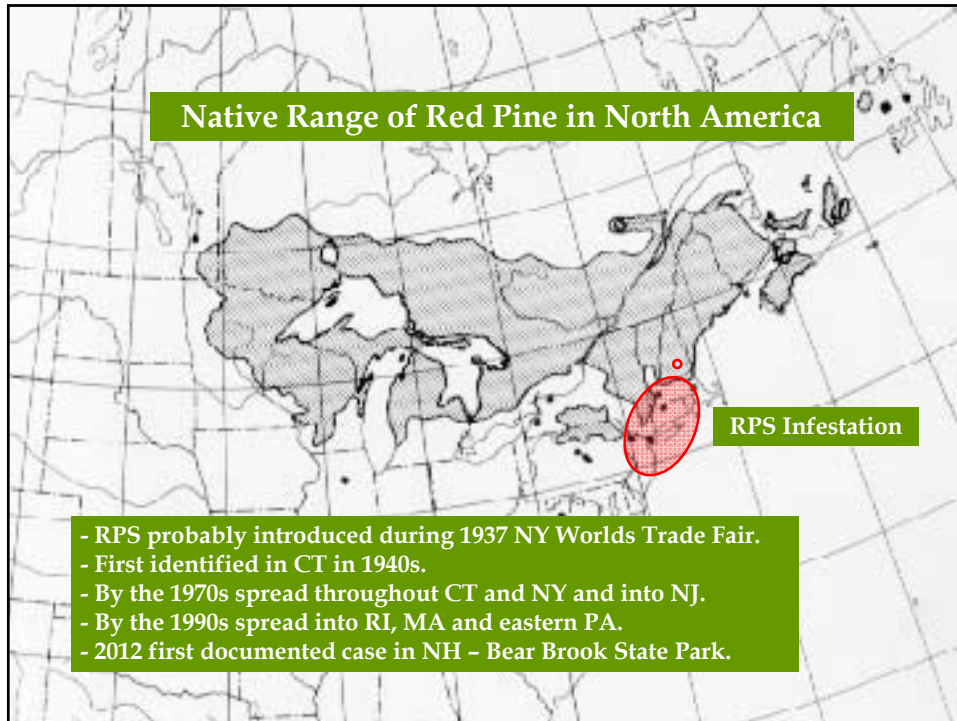


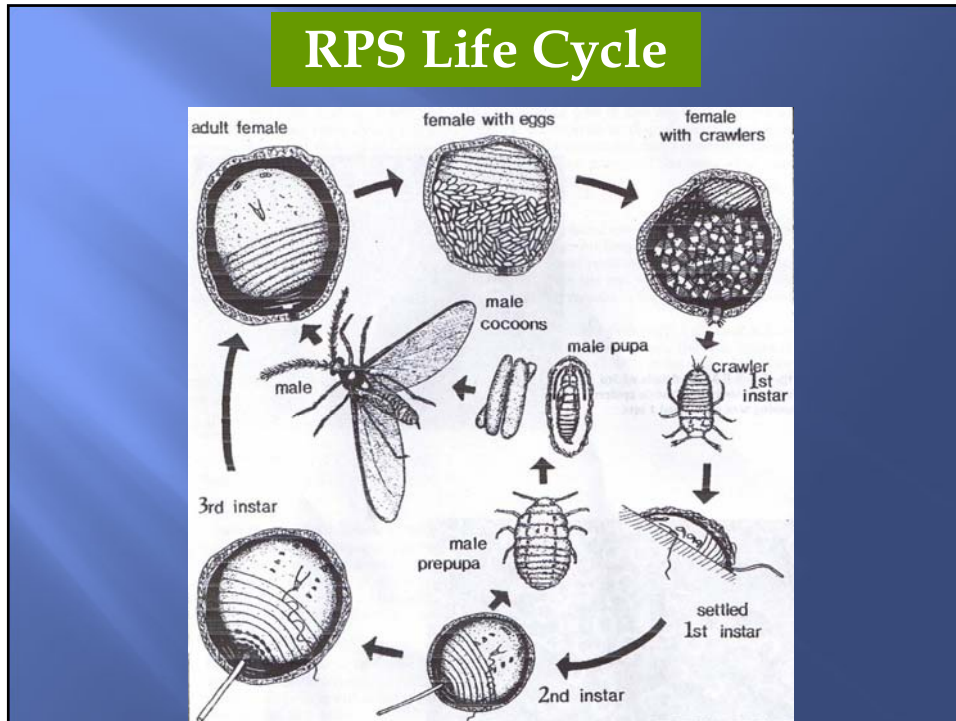
### Red Pine Scale

- RPS is an exotic invasive insect originating from Asia.

- In North America it attacks only red pine - red pine is the only native pine species of "Eurasian" descent.

- Most current infestations are limited to plantations south of the native red pine range.





### Dispersal

RPS is not very mobile and relies on external vectors for movement:

The collage includes the following elements: a cartoon cloud blowing, a photograph of a logging truck in a forest, a photograph of a squirrel, and a photograph of a chickadee. A green box with the text "Low risk - no quarantine" is overlaid on the logging truck image.

## Controls

### Biological

- Due to the exotic nature of RPS there are no effective natural predators.
- Introduction of predators from its native range has proven unsuccessful.

### Chemical

- Use of insecticides in plantation settings has proven ineffective and costly.
- Individual ornamental trees may be protected to some extent with repeated applications.

### Weather

- RPS is susceptible to temperatures below -10 F.
- Multiple exposures of longer durations increases mortality rates.

### Mechanical

- The only effective means of control is to remove the scale's food source by completely harvesting the infested stands.
- Winter operation, chip the tops, power wash equipment before it leaves the site.

