



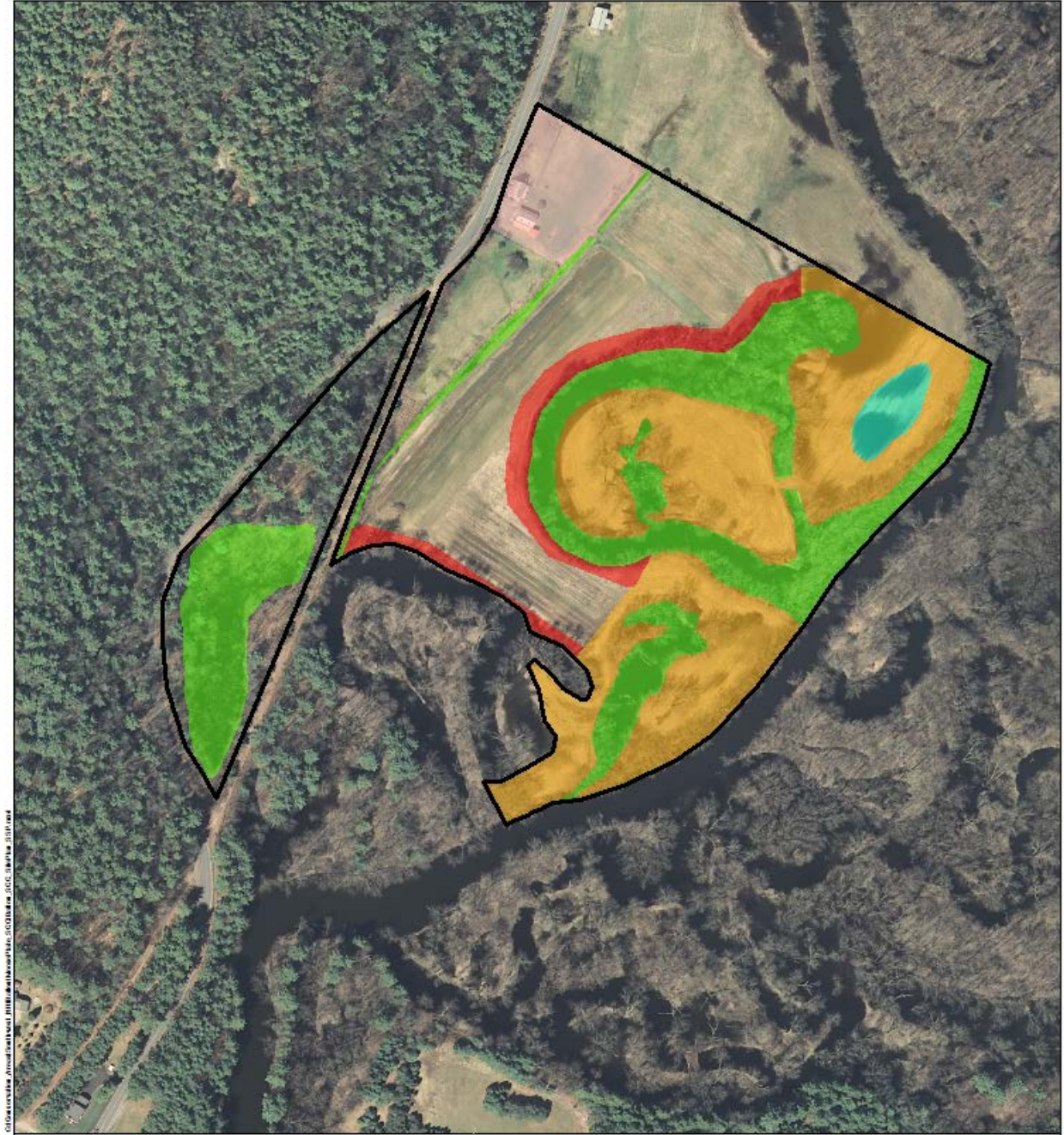
Land Protection and Restoration Finding the Money!

Jan McClure

Director of Land Protection

©2008 The Nature Conservancy. All rights reserved. No part of this publication may be reproduced without the prior written permission of The Nature Conservancy.







Floodplain forest



Farmland



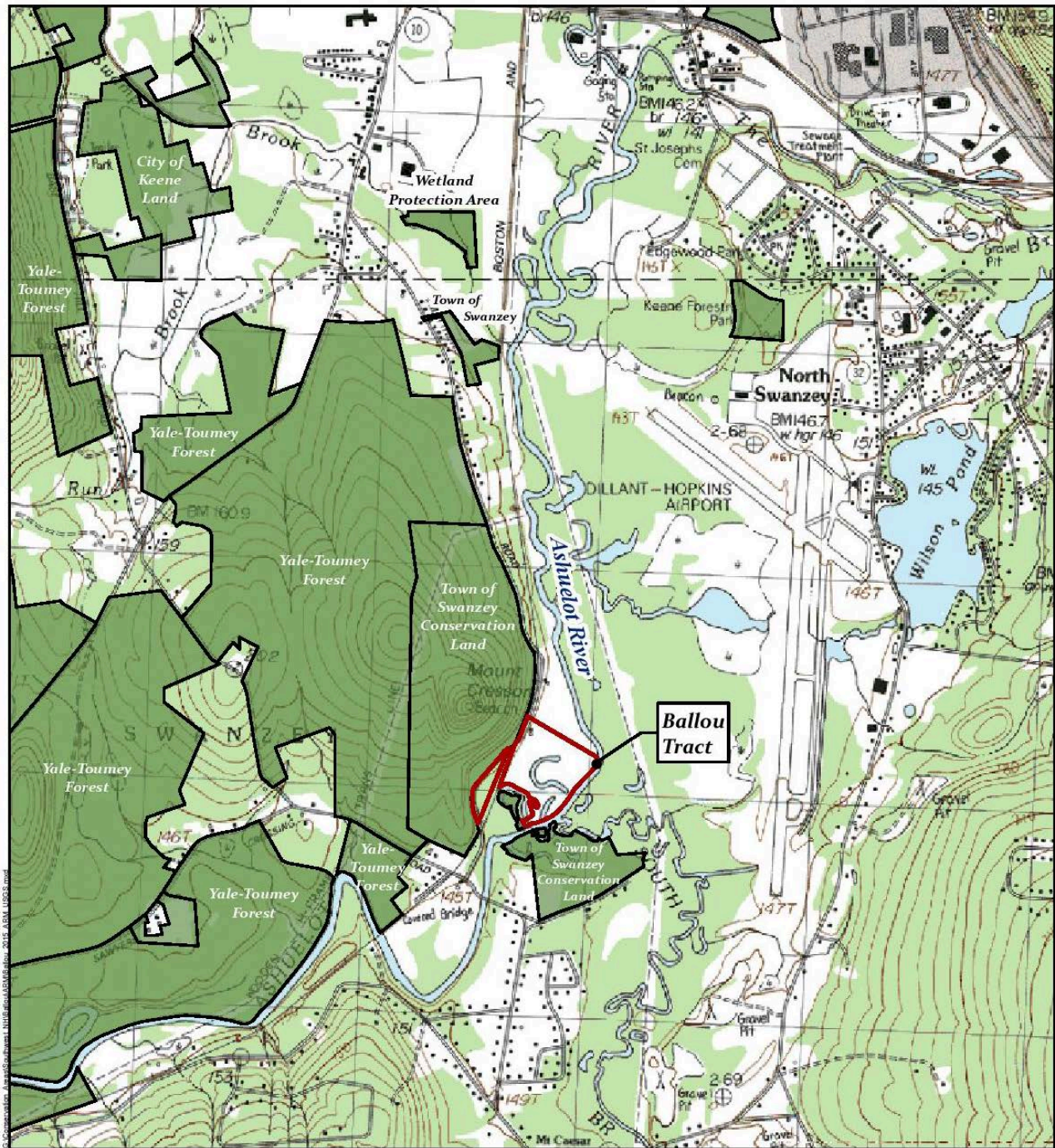
Wetlands

Wetland habitat



Connectivity





Rare Species



Recreation



Riparian habitat



Restoration



Property Attributes

- 1500 feet of river shoreline
- floodplain forest habitat
- Wildlife habitat and rare species present
- Active farmland and prime agricultural soils
- Wetlands
- Connectivity to adjacent conservation land
- Rail trail – recreational enhancement
- Scenic qualities
- Restoration potential

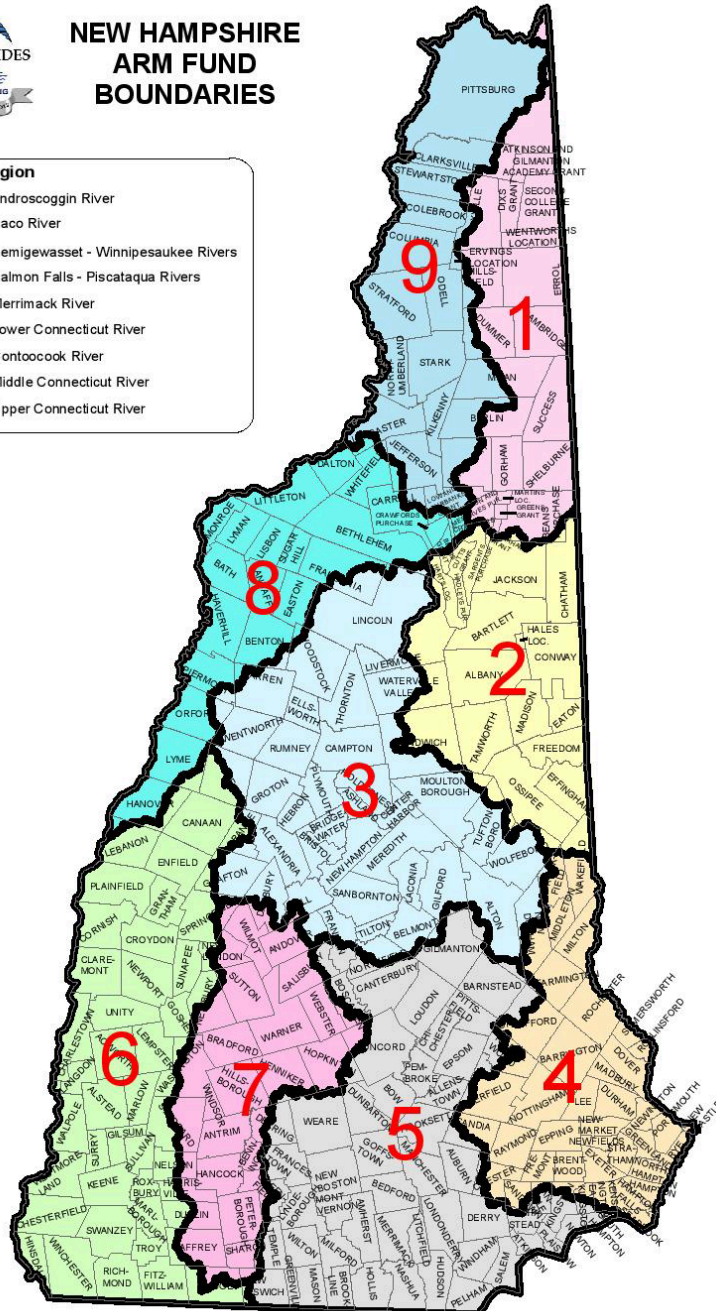
Aquatic Resource Mitigation Fund (NH DES)

- In-lieu fee program
- Watershed based
- Wetlands functions and values (NH Method)
- Funds protection and restoration
- Requires long-term restrictions
- Public access not required



NEW HAMPSHIRE ARM FUND BOUNDARIES

- ARM Region**
- 1 – Androscoggin River
 - 2 – Saco River
 - 3 – Pemigewasset - Winnepesaukee Rivers
 - 4 – Salmon Falls - Piscataqua Rivers
 - 5 – Merrimack River
 - 6 – Lower Connecticut River
 - 7 – Contoocook River
 - 8 – Middle Connecticut River
 - 9 – Upper Connecticut River



NH Method-Wetlands Assessment

| New Hampshire Method Summary Table | | | | |
|--|-------------|-------------|-------------------------------------|---------------------|
| | Wetland A | Wetland B | Wetland C | Wetland D |
| Wetland name/code | Large Oxbow | Small Oxbow | Between Matthews Rd. and rail trail | Ditch across fields |
| Date Evaluated | 8/6/2013 | 8/6/2013 | 8/6/2013 | 8/6/2013 |
| Investigator (Certified Wetland Scientist) | P. Steckler | P. Steckler | P. Steckler | P. Steckler |
| Wetland Acres | 6.5 | 1 | 2 | 0.4 |
| Watershed Acres | 199,141 | 199,141 | 30 | 15 |
| Wetland Functions & Scores | | | | |
| 1. ECOLOGICAL INTEGRITY | 7.7 * | 8.6 * | 7.7 | 4.1 |
| 2. WETLAND WILDLIFE HABITAT | 6.5 * | 6.7 * | 5.7 | 2.6 |
| 3. FISH & AQUATIC HABITAT | 7.0 * | 6.2 * | N/A | N/A |
| 4. SCENIC QUALITY | 7.9 * | 7.3 * | 6.6 | 4.9 |
| 5. EDUCATIONAL POTENTIAL | 8.8 * | 8.7 * | 5.1 | 5.3 |
| 6. WETLAND-BASED RECREATION | 7.4 | 6.5 | 5.5 | 4.7 |
| 7. FLOODWATER STORAGE | 3.8 | 2.3 | 4.0 | 0.1 |
| 8. GROUNDWATER | 6.2 * | 6.2 * | 3.6 | 4.4 |
| 9. SEDIMENT TRAPPING | 7.8 * | 7.6 * | 8.4 | 5.9 |
| 10. NUTRIENT TRANSFORMATION | 8.3 * | 8.0 * | 7.5 | 7.2 |
| 11. SHORELINE ANCHORING | 6.5 * | 3.0 * | N/A | N/A |
| 12. NOTEWORTHINESS | 50.0 * | 40.0 * | 40.0 | 20.0 |

Moose Plate State Conservation Committee

- \$250,000 available annually
- Project should protect, restore, or enhance natural resources.
 - Water Quality and Quantity
 - Wildlife Habitat
 - Soil Health
 - Conservation Planning
 - Land Conservation

Town Funds

Conservation Commission Open Space Committee

Conservation Commission Funds

- Land Use Change Tax \$
- Other \$

Special Committees

- Open Space Committee

Special Requirements

- Town vote
- Selectmen vote
- Special meeting

Budget: Public Sources

| Funders | | ARM | SCC | Town | NRCS | |
|--------------------|--|-----------|--------|----------|----------|-----------|
| | | | | | | |
| Protection | | \$100,000 | | \$20,000 | | \$120,000 |
| | | | | | | |
| Restoration | | \$40,000 | 24,000 | \$10,000 | \$76,000 | \$150,000 |
| | | | | | | |



Funding Sources for Land Protection
Projects for Saving Special Places 2017
(Jan McClure)

| Grant | Agency | Funding category | Preproposal deadline | Full proposal deadline | Funding range and description | Agency Contact | Link to RFP |
|---|---------------------------------|---|---------------------------|------------------------|--|--|---|
| Aquatic Resources Mitigation Fund (ARM) | NH DES | Land Protection, Restoration - wetlands | April (No grants in 2017) | August | Funding varies among watersheds. Wetlands functions and values protection and restoration focus. Wetlands assessment required for proposal. | Lori Sommer ph: 271 4059 email: lommer@des.state.nh.us | http://des.nh.gov/organization/divisions/water/wetlands/wmp/ |
| Land and Community Heritage Investment Program (LCHIP) | LCHIP | Land Protection | May | June | Matching grants for land protection | Paula Bellemore ph: 224 4113 email: pbellemore@lchip.org | http://www.lchip.org/ |
| Northern Border Regional Commission (NBRC) Economic and Infrastructure Development Investments | NBRC | Economics and Conservation | N/A | June | \$250K available for Coos, Carroll, Grafton, Sullivan counties. Different match requirements by County. Projects must have economic benefits, can include transportation infrastructure and resource conservation/tourism/recreation (incl. easements and land purchases). | | http://www.nbric.gov/content/2016-eid-investments |
| National Coastal Wetlands Conservation Grant Program (NCWCGP) | USFWS | Land Protection - wetlands, coastal | N/A | June | Up to \$1 million for coastal wetlands acquisition, enhancement. Must partner with State agency as applicant. | | http://www.fws.gov/coastal/pdfs/2017NCWCGP_NOFOIin0101212016.pdf |
| Conservation License Plate Grant Program - "Moose Plate" | NH State Conservation Committee | Land protection, Restoration - wetlands | N/A | Sept. | Approximately \$250,000 available annually. Projects protect, restore and enhance the state's valuable natural resources - water quality and quantity, wildlife habitat, soil conservation, conservation planning, land conservation (permanent land protection through conservation easement or fee acquisition and/or associated transaction and stewardship costs). | Dea Brickner-Wood Phone: 868 6112 email: bluesky24@comcast.net | http://agriculture.nh.gov/divisions/scc/grant-program.htm |
| NOAA Coastal and Estuarine Land Conservation Program (CELCP) | NOAA | Land protection | N/A | Oct. | Max \$1.5 million for 2015; project has to make it through state and then national competition | | https://coast.noaa.gov/czm/landconservation/applying/ |
| Local Source Water Protection Grant | NH DES | Land Protection | N/A | November | Up to \$20,000 for drinking water protection. Studies, transaction costs, outreach, planning. | | http://des.nh.gov/organization/divisions/water/dwgb/dwsp/pl/swp_grants.htm |
| Water Supply Land Protection Grant Program | NH DES | Land protection | N/A | various | Funds purchase of land or easements for water supply protection | | http://des.nh.gov/organization/divisions/water/dwgb/dwsp/pl/land_acqui/index.htm |
| North American Wetlands Conservation Act (NAWCA) small grant | USFWS | Land Protection - wetlands | N/A | October | \$100K for wetland conservation, including land acquisition, enhancement/restoration. 1:1 match from non-federal sources. | | http://www.fws.gov/birds/grants/north-american-wetland-conservation-act/how-to-apply-for-a-nawca-grant.php |
| Natural Resources Conservation Service (NRCS) Wetland Reserve Easement (WRE) | NRCS/USDA | Land Protection | N/A | Ongoing | Wetland easement | Sue Knight ph: 868 9931 email: susan.knight@nh.usda.gov | https://www.nrcs.usda.gov/wps/portal/nrcs/detail/nh/programs/easements/?cid=stelprdb1253556 |
| Natural Resources Conservation Service (NRCS) Agricultural Land Easement (ALE) | NRCS/USDA | Land Protection | N/A | Ongoing | Agricultural easement | Sue Knight ph: 868 9931 email: susan.knight@nh.usda.gov | http://www.nrcs.usda.gov/wps/portal/nrcs/detail/nh/programs/easements/?cid=stelprdb1253558 |
| Community Forest Program | US Forest Service | Land protection | N/A | January | Fee simple acquisition of forest lands. 50:50 match requirement. \$400K cap. | | http://www.fs.fed.us/cooperativedeforestry/programs/foa/cfp.shtml |
| Upper Connecticut River Mitigation and Enhancement Fund (MEF) through NH Charitable Fund | Private | Land Protection | January | February | land protection and restoration in MEF focus areas | | http://www.nhcf.org/page.aspx?pid=673 |
| Great Bay Resource Protection Partnership (GBRPP) Land Protection Transaction Grant Program (LPTGP) | Private | Land Protection | various | various | Funds land protection transaction costs and pre-project appraisal costs in the coastal watershed | Dea Brickner-Wood Phone: 868 6112 email: bluesky24@comcast.net | http://www.greatbaypartnership.org/grants.html |
| Merrimack Conservation Partnership | Private | Land Protection | various | various | transaction costs | Brian Hotz ph:224 9945, bhotz@forestsociety.org | https://merrimackconservationpartnership.org/ |
| Quabbin to Cardigan Partnership | Private | Land Protection | various | various | transaction costs | Brian Hotz ph:224 9945, bhotz@forestsociety.org | https://q2cpartnership.org/partners/ |





- Riparian protection for farmland
- Recreation