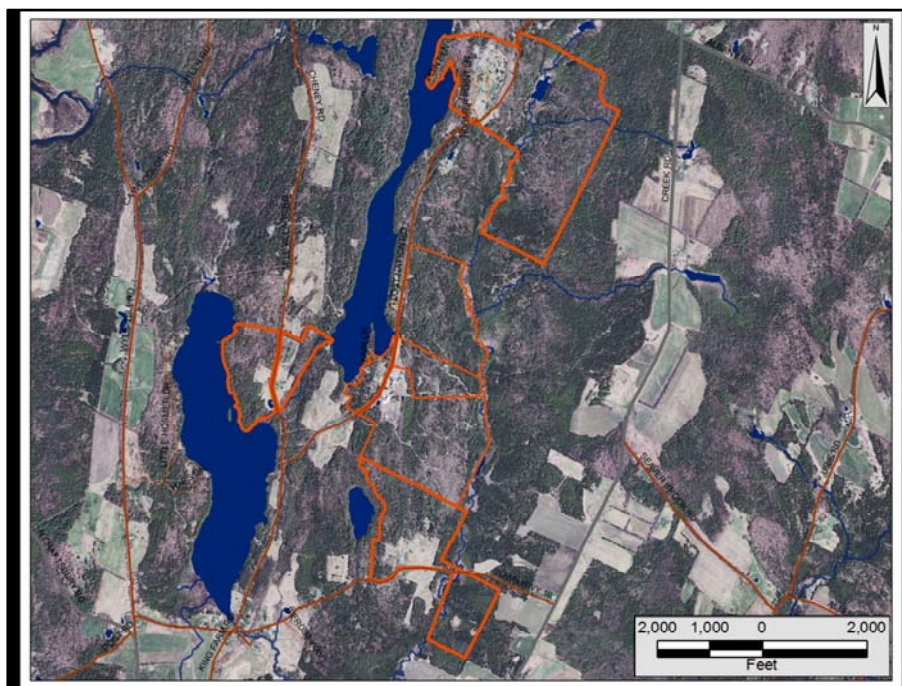


### Craftsbury Outdoor Center Mission

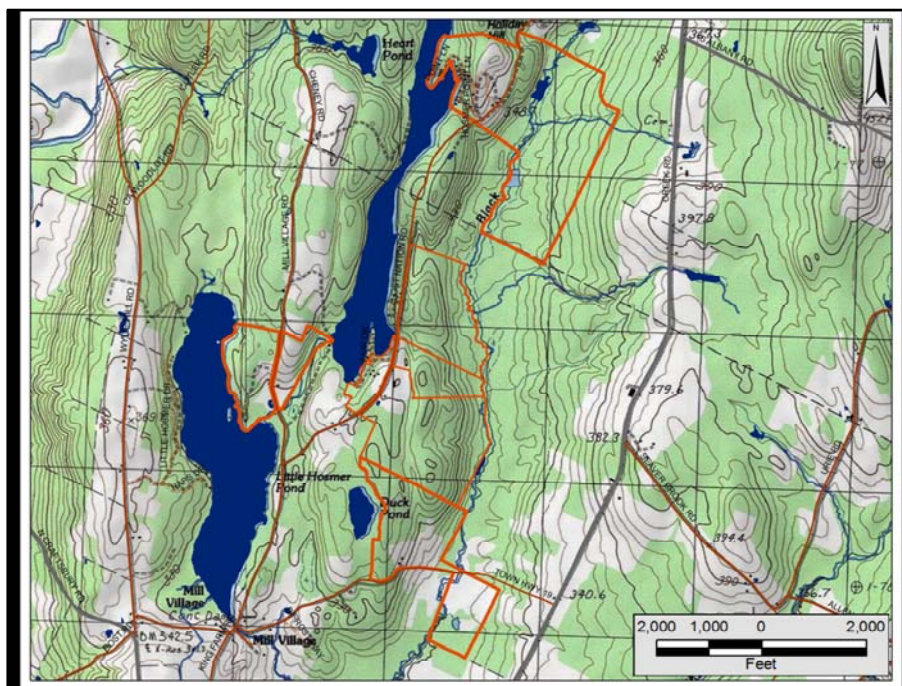
- To support and promote participation and excellence in lifelong sports with a special focus on rowing, nordic skiing, biathlon and running
- To use and teach sustainable practices
- To protect and manage the surrounding land, lake and trails

Forest Management Specific Goals

- Maintain a healthy, diverse, and productive forest
- Enhance and maintain diverse wildlife habitat conditions for a variety of species including migratory forest birds
- Create/maintain forest structures that are aesthetically pleasing and which minimize trail management issues
- Through periodic timber harvesting generate revenue, firewood for campus use, and support local and regional forest sector jobs and business.

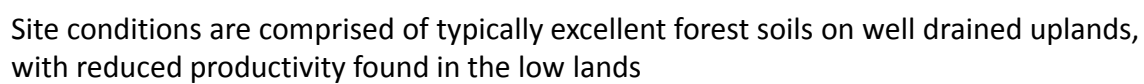


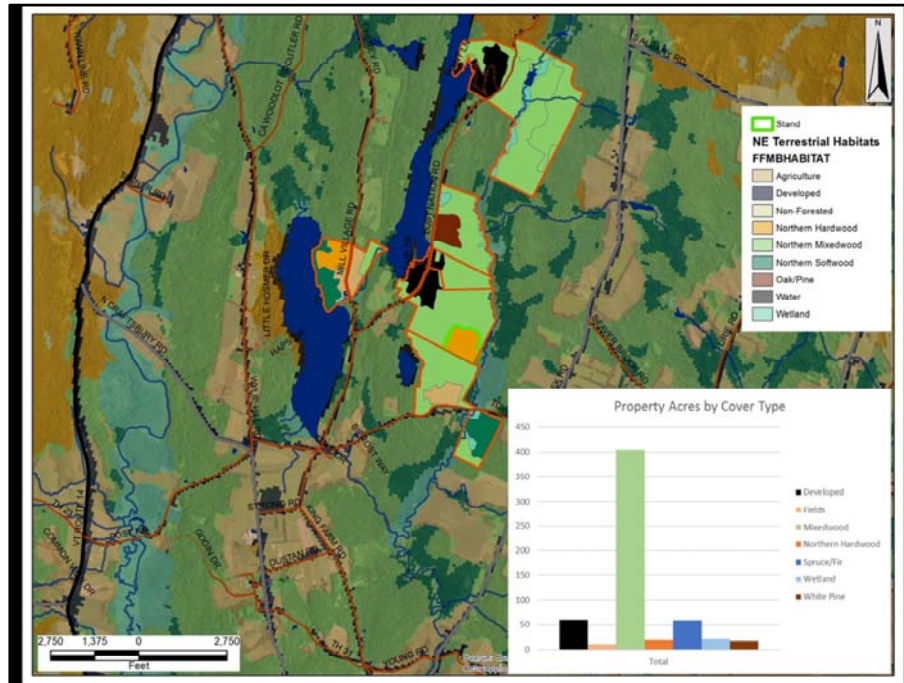
640 acres on 3 non contiguous properties



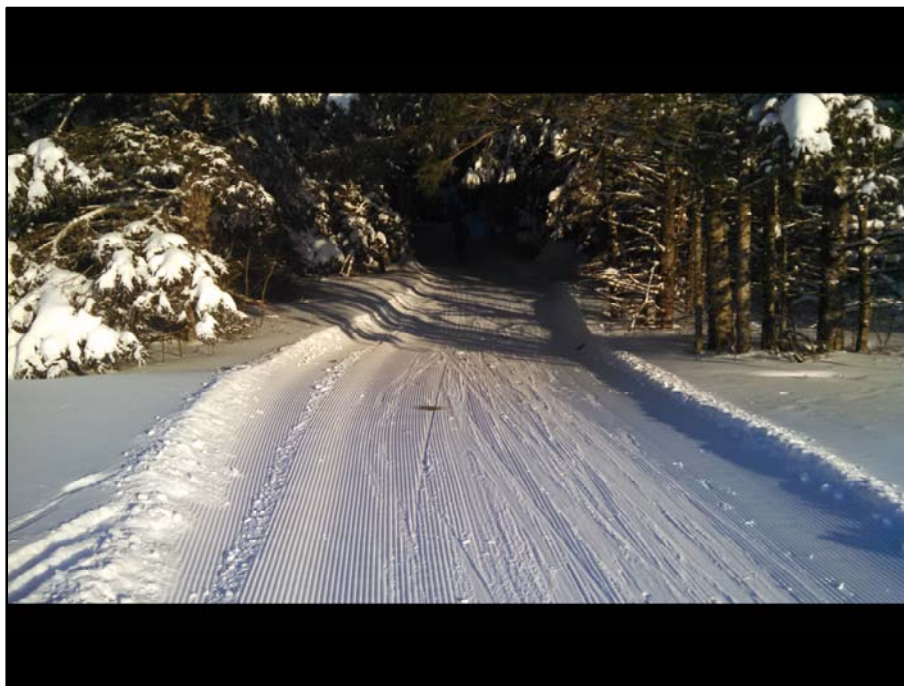
Generally moderate slopes and terrain with elevations around 1200ft





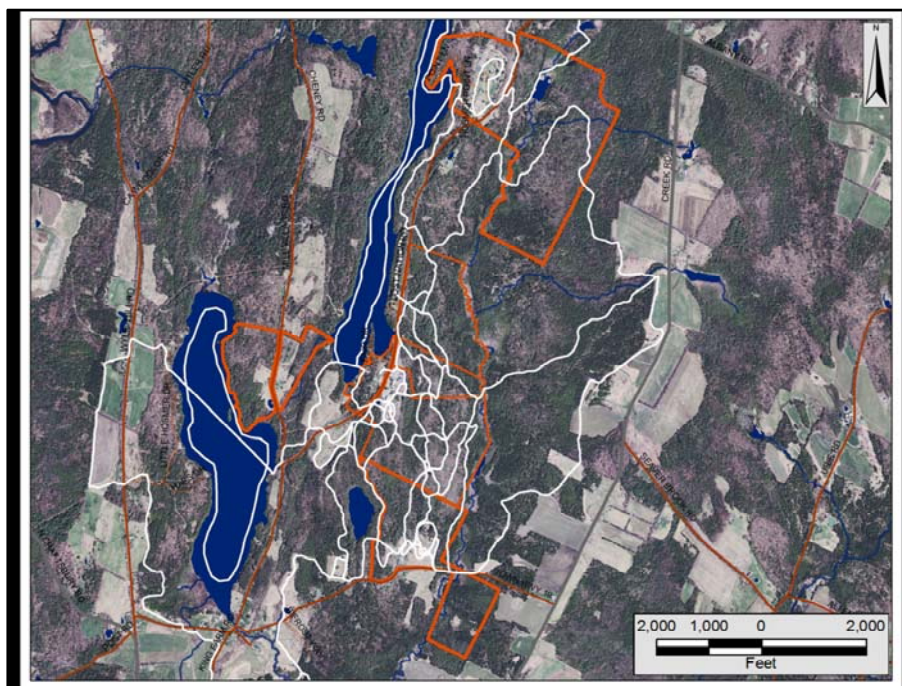


Landscape is dominated by mixedwood forest types with areas of pure softwoods and hardwoods interspersed. The same is true on this specific ownership where mixedwoods represent well over 60 percent of the total acreage

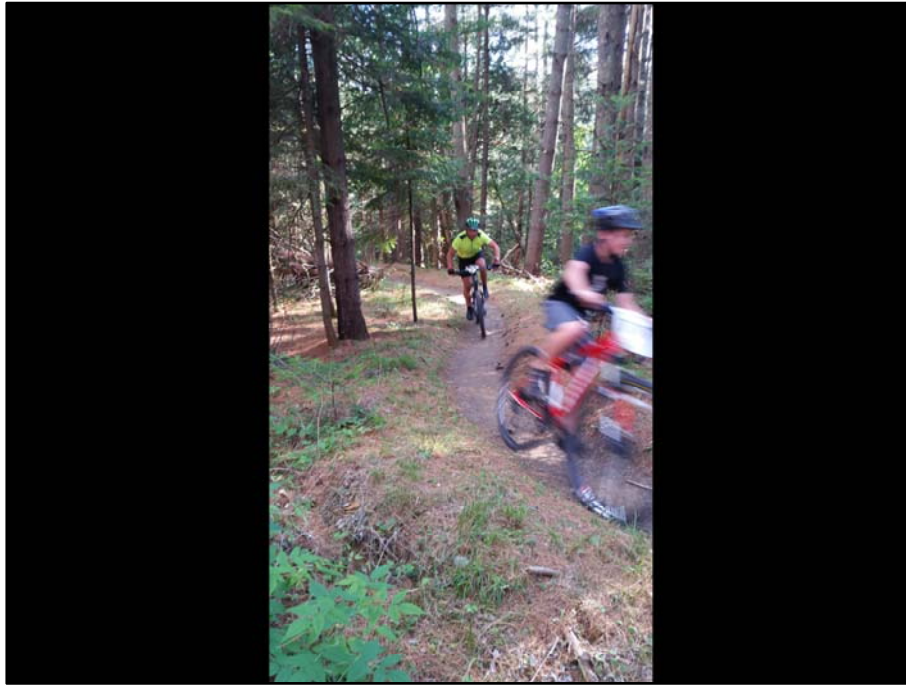


Recreational activities are the principle use of the property, with over 50 miles of ski trails crossing both Center owned and abutting private lands in the immediate area.

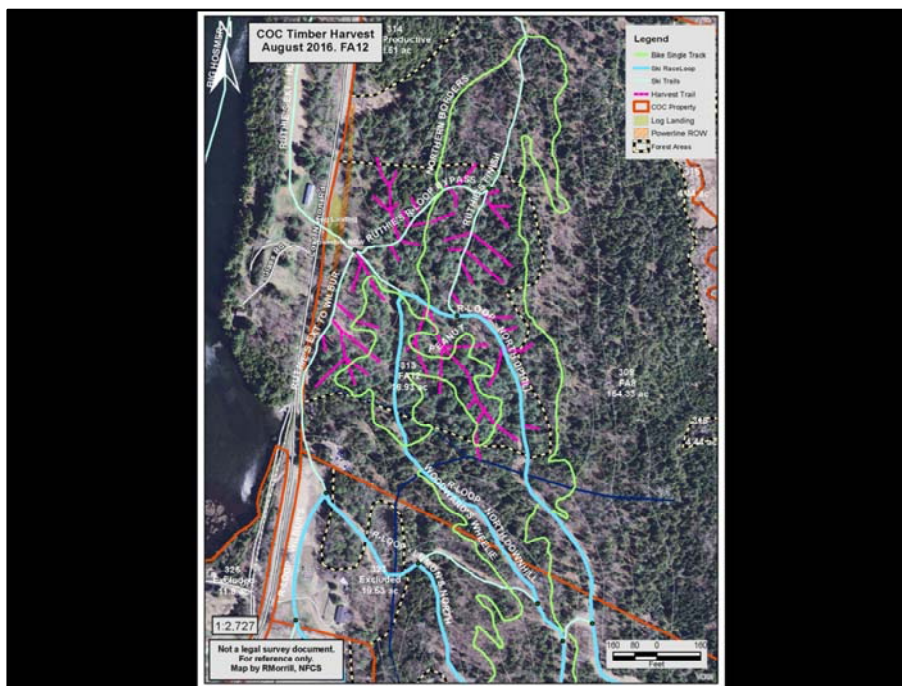


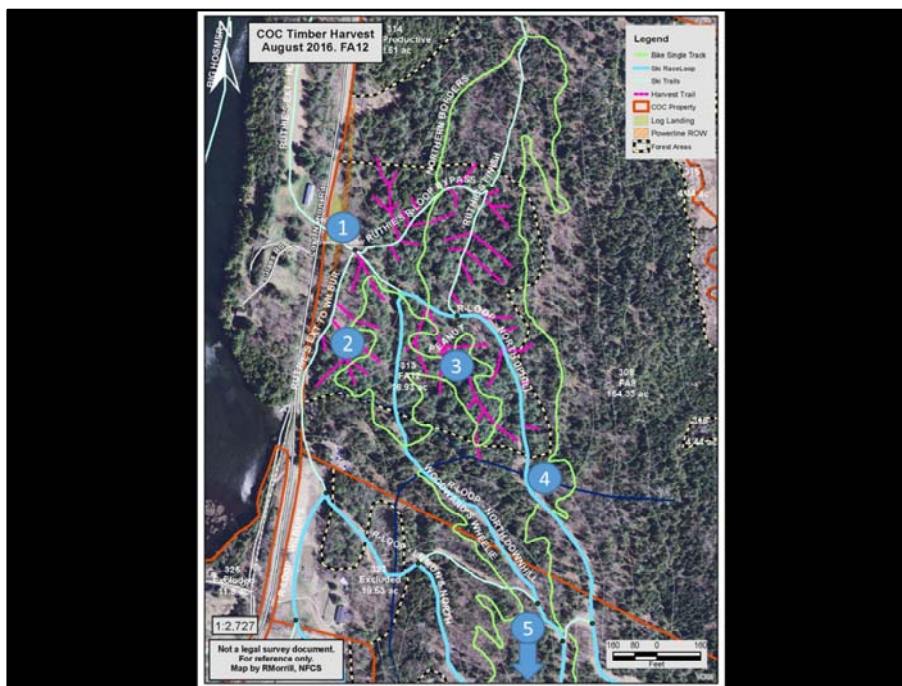


A portion of this network includes a world cup level race course



A growing network of bike trails cross the property and are principle use of the harvest area we will focus on this afternoon.





The harvest area is in the center of this map, covers about 17 acres and includes about a 2 miles of ski and bike trails combined.



We will talk more about the harvest layout, but basic intro is that the stand was marked to cut, and all skid trails were flagged in advance





During the harvest all trails within the harvest area were closed to the public and the goals of the harvest were communicated to user groups in a variety of ways.



The harvest was completed with hand felling and a single cable skidder. All told the job took about 3 weeks with some weather delays.