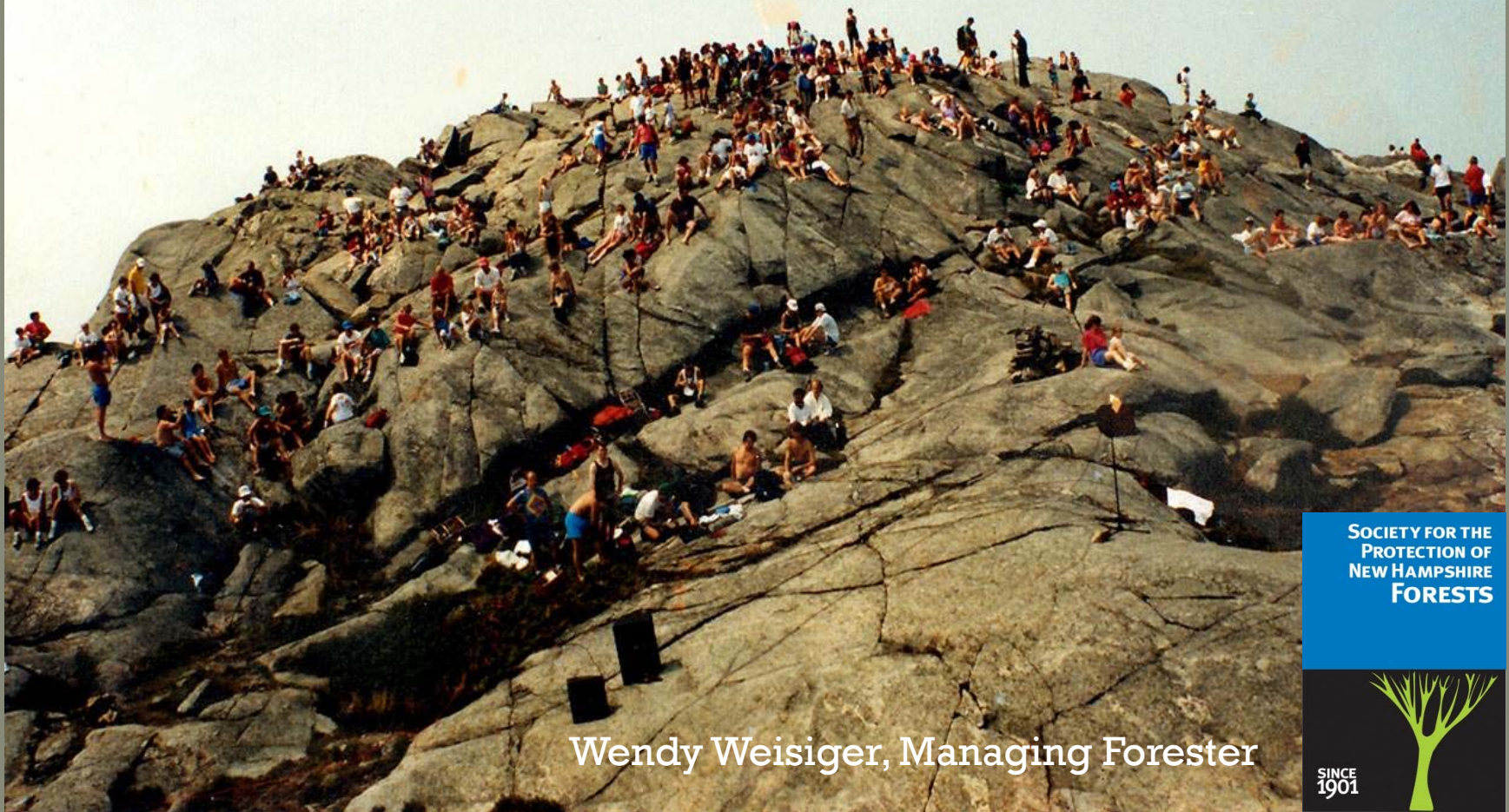


Loving it to Death

Caring for the Resource, Managing People



Wendy Weisiger, Managing Forester

SOCIETY FOR THE
PROTECTION OF
NEW HAMPSHIRE
FORESTS



Society for the Protection of NH Forests

- 56,000 fee-owned acres statewide
- 185 reservations
- 400 miles of trails & forestry roads
- 3 staff foresters
- 1 land steward volunteer coordinator
- 160 Land Steward Volunteers

Our Most Impacted Places

Mount Major, Alton



Monadnock Reservation, Jaffrey

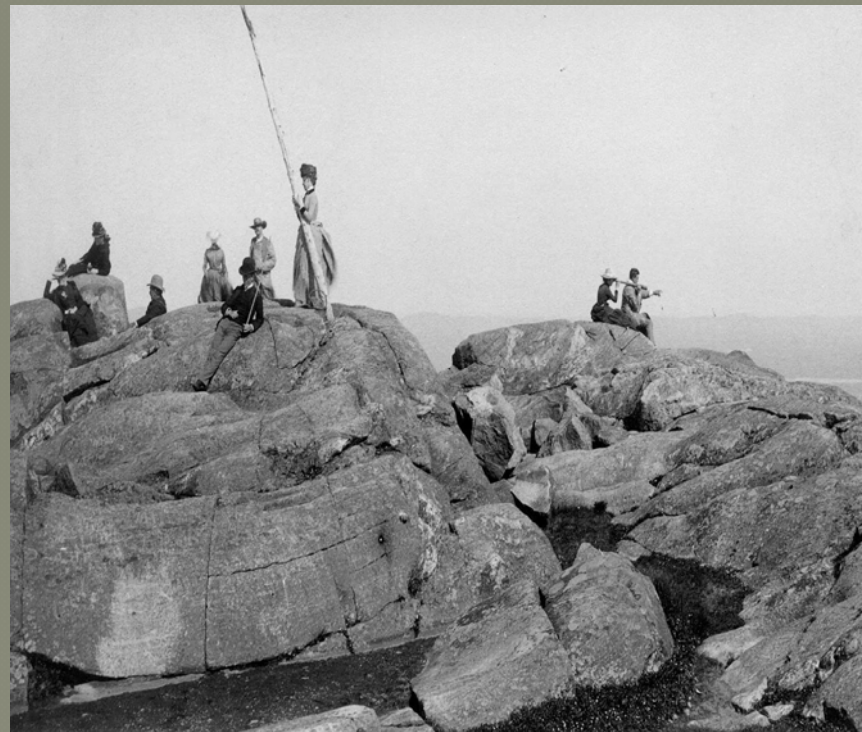


Monadnock Reservation

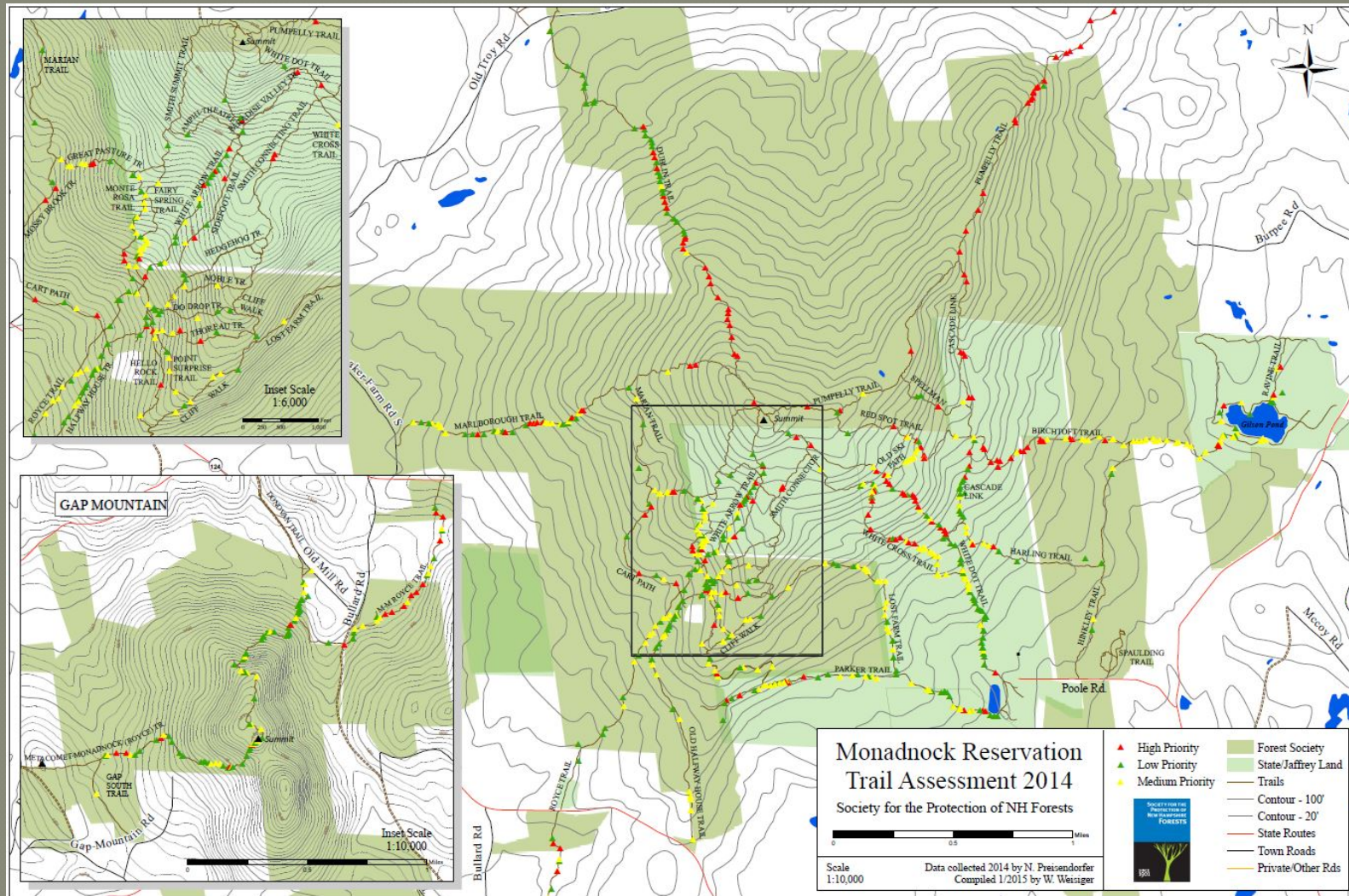


Monadnock Reservation

- Monadnock Reservation in Jaffrey, NH
- Recreational Lease to NH State Parks - staffed
- 100,000 visitors
- Fee & Free Trailheads
- 40 miles of trails
- 6 major trailheads



Trail Assessment



Trail Challenges

BRUSHING IN BRAIDED AREAS



BUILDING TREADWAY IN WET AREAS



Trail Challenges

MAJOR EROSION



BRIDGE NEEDS



Professional Crews

Highly Technical Work



Volunteer “Pro-Crews”

TrailWrights



Volunteer “Pro-Crews”

Jolly Rovers



Monadnock Trails Week

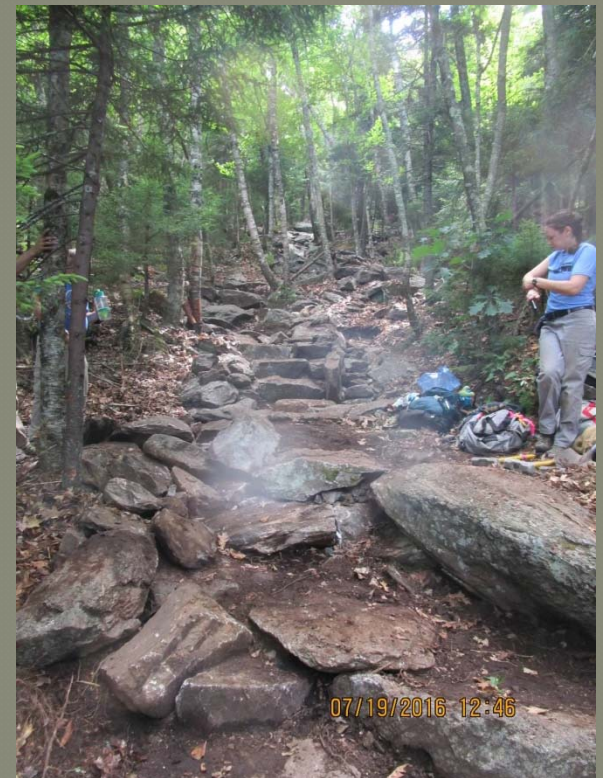
- 5 Days of fun Trail Work in the JULY heat!
- *Engages many Volunteers*
- Educates hikers about trail needs
- Trains volunteers in Proper maintenance
- Accomplishes much regular maintenance
- High volume of less-technical work
- *Connects people to the place and to the Forest Society*

Trails Week



Pro-Led Volunteers

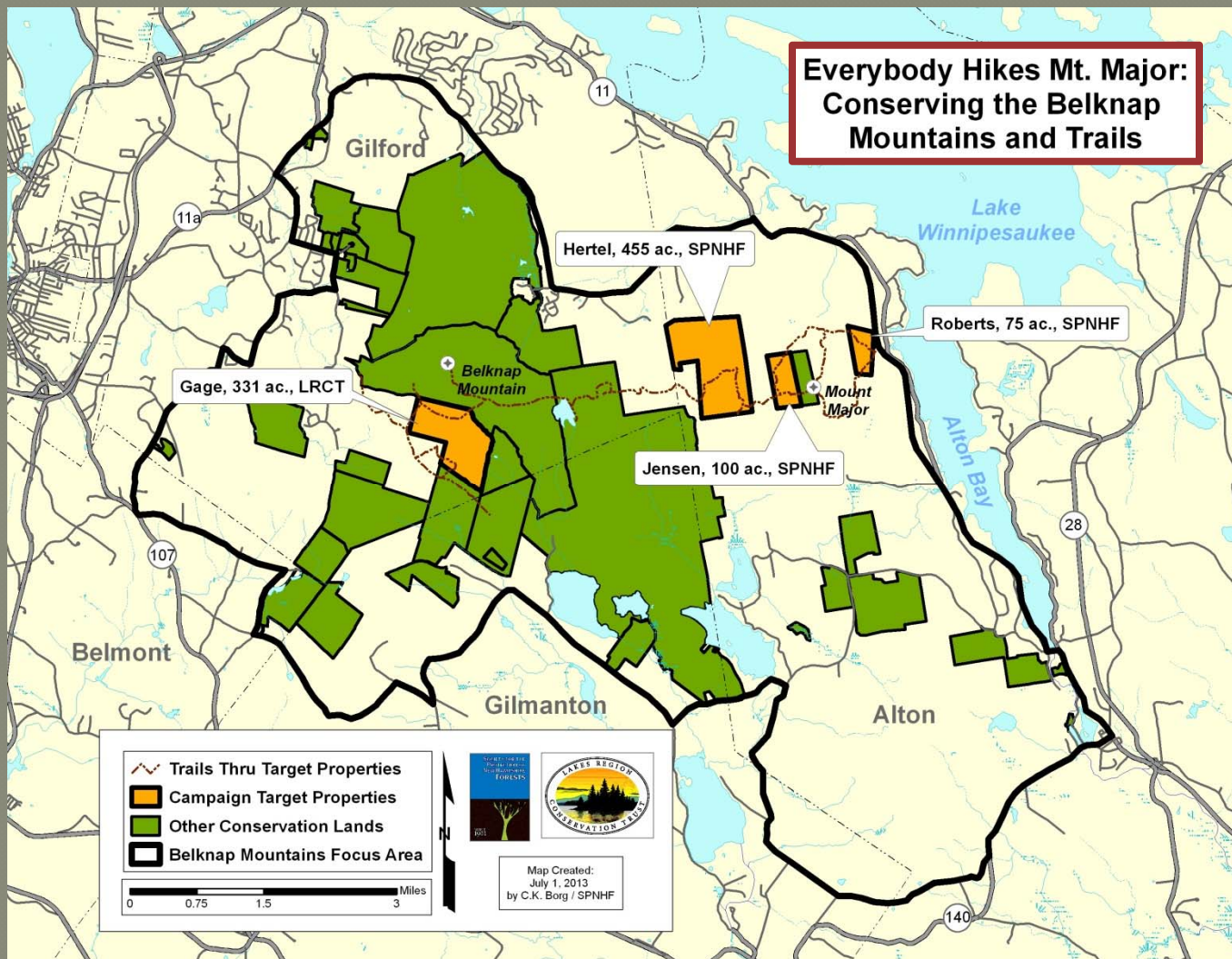
- Technical Work – Longer Timeframes



Train Your Volunteers



Mount Major Reservation



“Everybody Hikes Mt. Major”

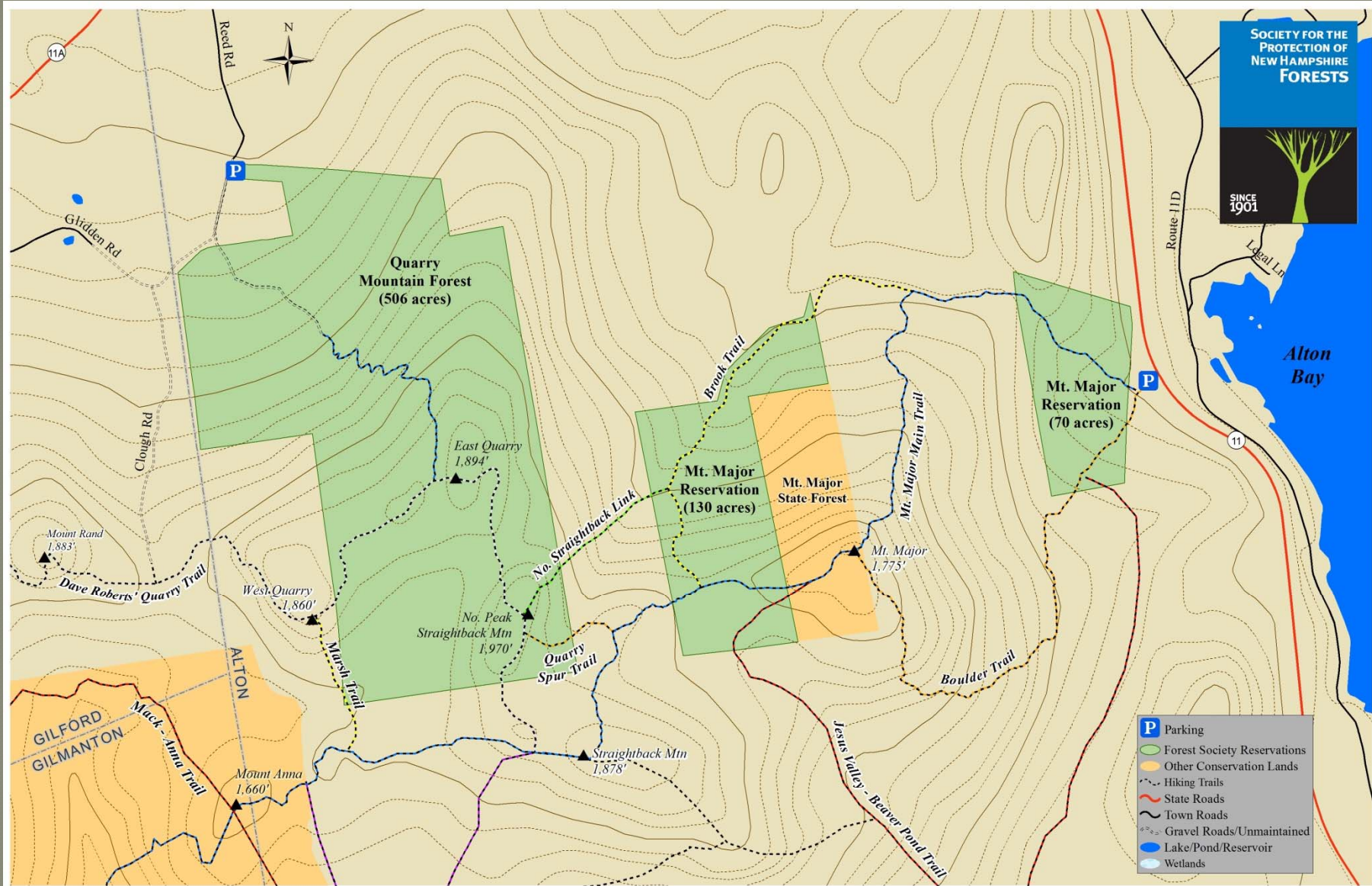




Mt. Major Challenges

- 80,000 Visitors
- 1 in 10 has a Dog
- No User Fee
- No Staff Presence
- No facilities
- Private & Cons. Land
- Urban & Less-Informed Clientele
- Trails Haven't Been Maintained
- WASTE: IT'S GROSS





Graffiti



Dog and Human Waste



Trail Degradation



Trash



Where to Start?

- Toilets
- Signage
- Clean-Up Trash
- Clean Up Graffiti
- Provide Toilets!



So How do we Engage Hikers with Us, Our Mission & the Resource?

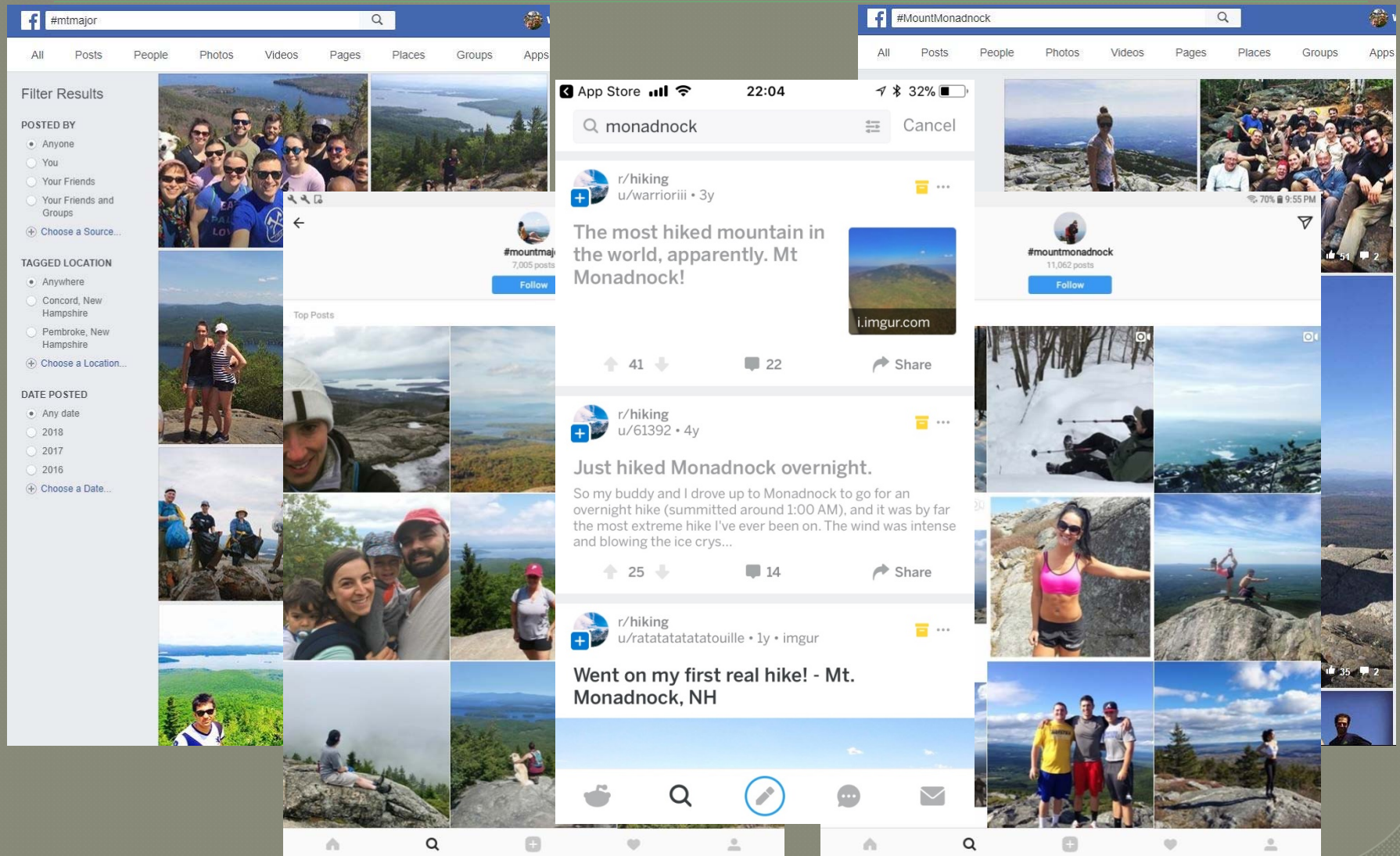
- Land Trusts rely on donations & grants to support their resources (\$\$)
- Resource Managers understand the impacts from heavy use
- Hikers expect to use the resource for FREE!
- Hikers think the trails are all great!
- Their tax dollars support trail work, right?
- This is a Public Park, right?

Things We Are Doing:

- Adding Signs
- Developing software for guided hikes
- Engaging the schools who are already visiting the property
- Text-To-Donate??
- SOCIAL MEDIA -
It's a great tool, right?



Social Media Is Also Driving Use



The Social Push to Get Outside!

- ◉ Instagram
- ◉ Facebook
- ◉ Reddit
- ◉ Geocaching
- ◉ Kindness Rocks
- ◉ Fitness Apps



The Lists

TrailsNH.com

Map

Lists

Peaks

Gear

Tools

Info

- ME 4000
- NE 100 Highest
- NH 52 With A View
- NH 4000 Footers
- NH AMC Huts
- NH Presidential Range
- NY ADK46
- NY Catskill 3500
- VT 4000 Footers



Take the Forest Reservation Challenge!

Looking for a fun activity that will get you, your family and your friends outdoors?

The Forest Society's Forest Reservation Challenge is for you!

Be among the first to earn
an embroidered "Forest Reservation
Challenge" patch and a color decal.

*There are two ways to complete the
Forest Reservation Challenge.*

**Tier 1: Ideal for all ages. Visit ALL 33 of
the featured reservations in our [Forest
Reservation Guide](#). Document your
visits by sharing a self-photo taken on
each tract.**



Crowd-Sourced Trail Maps

OpenStreetMap [Edit](#) [History](#) [Export](#) GPS Traces [User Diaries](#)

alton, nh [Go](#) [+](#)

Search Results [×](#)

Results from OpenStreetMap Nominatim

Town Alton, Belknap County, New Hampshire, United States of America

[More results](#)

Results from GeoNames

- [Alton , United States](#)
- [Alton Bay , United States](#)
- [Town of Alton , United States](#)
- [Mount Major , United States](#)
- [East Alton , United States](#)
- [West Alton , United States](#)
- [Prospect Mountain High School , United States](#)
- [Alton Bay , United States](#)
- [Alton Town Beach , United States](#)
- [Hollywood Beach , United States](#)
- [Mount Major , United States](#)
- [Pine Mountain , United States](#)
- [Prospect Mountain , United States](#)

The map displays the Alton, New Hampshire area, featuring the Belknap Mountain State Forest and the Gunstock Recreation Area. Key locations and elevations include: Mount Rowe (509 m), Gunstock Mountain (674 m), Piper Mountain (617 m), Whiteface Mountain (477 m), Mt. Klem, Mt. Rand, Mt. Mack, Mt. Sweet, Mt. Shannon, Goat Pasture Hill (293 m), Avery Hill (411 m), Pine Mountain (426 m), Cedar Mountain (330 m), Straightback Mountain (570 m), Mount Major (528 m), E. Quarry Mt., W. Quarry Mt., Mount Anna, and Sunset Lake. The map also shows major roads like NH 11, NH 11A, NH 11B, NH 11D, NH 28A, and NH 107, as well as the Alton Bay Seaplane Base. A scale bar indicates 1 km.

Crowd Sourced Online Data



Social Media Driving Change



LITTERATI

Search Location



Leave No Trace



[Join](#) | [About](#) | [Learn](#) | [Get Involved](#) | [Teach](#) | [Blog](#) | [Pro Shop](#)

[JOIN](#)  [DONATE](#)  [PRINCIPLES](#) 

[Online Awareness Course](#)

[Training](#)

[Subaru Traveling Trainers](#)

[Find a Course](#)

[Custom Training & Consulting](#)

[Sin Dejar Huellas](#)

[Seven Principles Overview](#)

[The Seven Principles
Science Behind the Principles](#)



Seven Principles Overview

Leave No Trace is built on seven core principles that are used to communicate the best available minimum impact guidance for enjoying the outdoors responsibly. The Seven Principles of Leave No Trace were developed to help educate and guide recreationists in sustainable minimum impact practices that mitigate or avoid recreation-related impacts. These Principles are the most robust and widely utilized minimum impact outdoor practices. Although Leave No Trace has its roots in backcountry and wilderness, the practices have been adapted so that they can be applied anywhere - from the backcountry, to local parks, to your backyard - and for any recreational activity. Each Principle covers a specific topic and provides detailed information for minimizing impacts.

The Seven Principles

- Plan Ahead and Prepare
- Travel and Camp on Durable Surfaces
- Dispose of Waste Properly
- Leave What You Find
- Minimize Campfire Impacts
- Respect Wildlife
- Be Considerate of Other Visitors

Learn More!

Do you want to learn more about Leave No Trace? [Sign up for our eNews today!](#)

Seven Principle Cards

[Get your great reference card today!](#)



Effective Communication

- What does this mean?



- Explain why cores and peels shouldn't be left on trails. →



Signage

- Can education the uninformed



- Can't fix illegal behavior



What's wrong with
this picture? →



← But why?
These rare plants
are disappearing.
Vegetation prevents
erosion.

Things to Consider with New Trails

- What other trails are already in the area?
- Sensitive sites
- Neighbors – how will this impact them?
- Who will maintain access to the trailhead?
- Who will build and lay out your trail?
- Do you have trained volunteers?

Trails Resources

- BMP Guidebooks –Forest Service & NH Trails Bureau
- AmericanTrails.org – webinars, resources
- Professional Trail Builders Association:
www.trailbuilders.org
- Wildnh.com/trails – NHFG People & Trails
- Leave No Trace – LNT.org