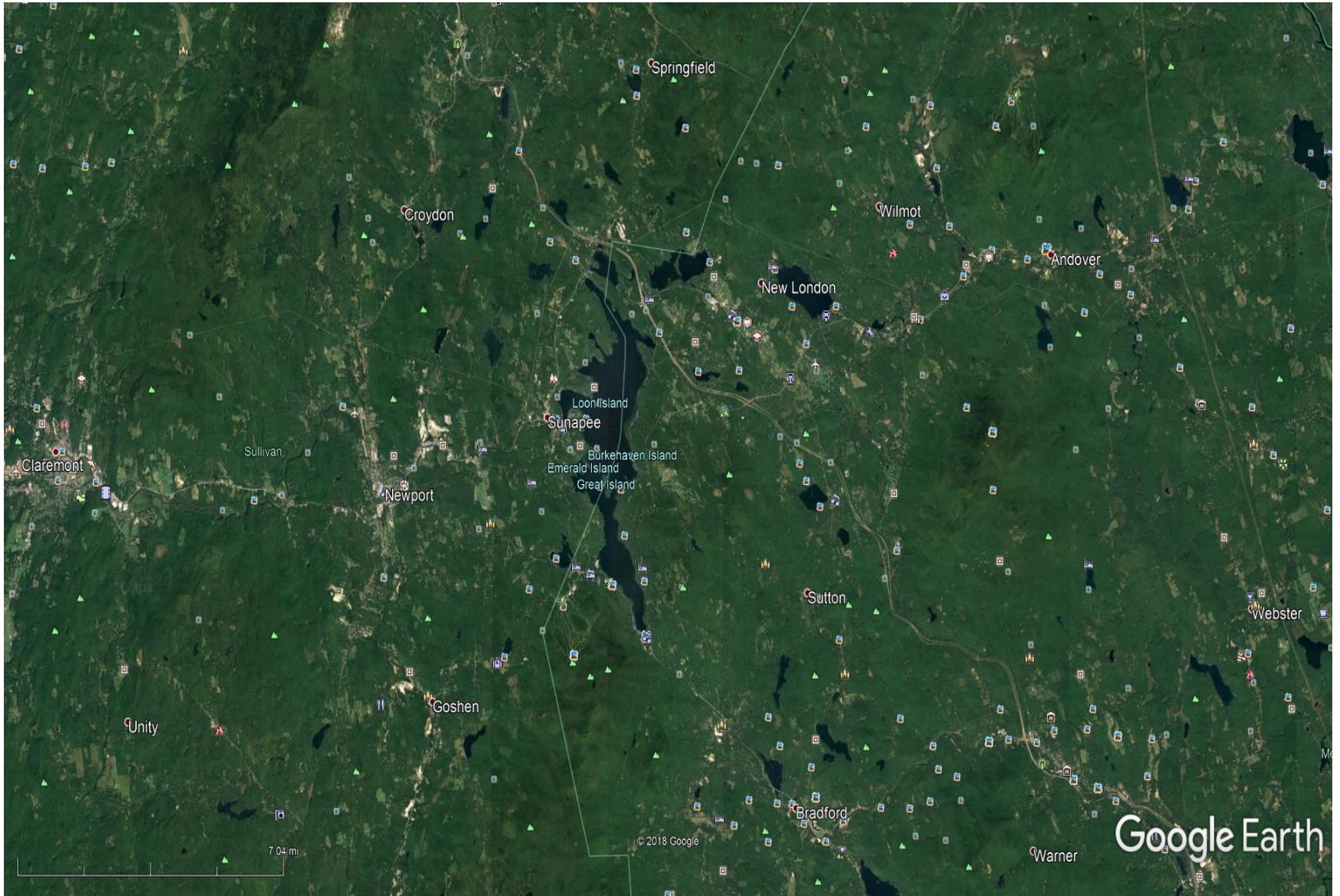


# Sunapee Region

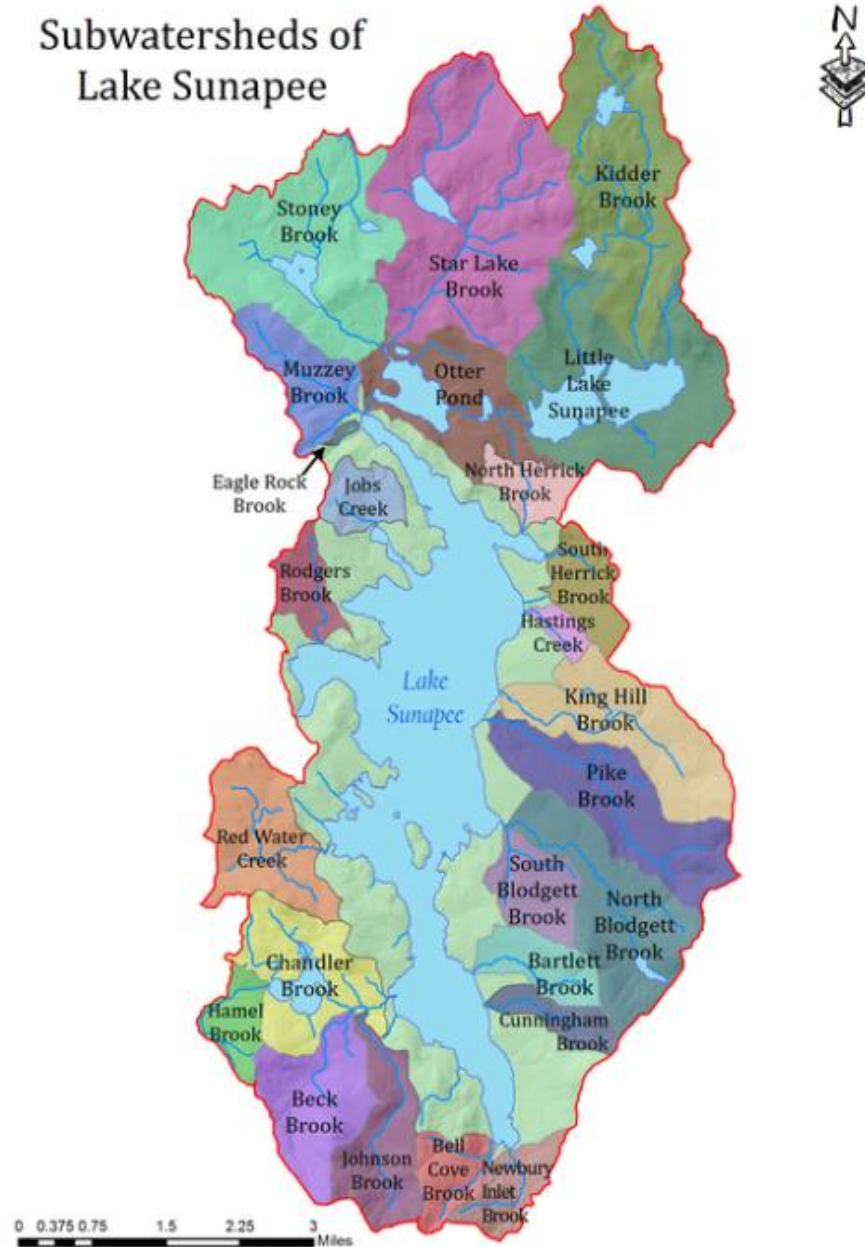


# Sunapee Watershed

All water resources:

- Lakes
- Ponds
- Streams
- Wetlands
- Groundwater

## Subwatersheds of Lake Sunapee





# Lake Sunapee Watershed Relief

# The Watershed



0 0.375 0.75 1.5 2.25 3  
Miles

# Management Plan for the Lake Sunapee Watershed

March 2008



## Priority Concerns

### Stormwater/ surface runoff related

- Pollution from stormwater runoff
- Erosion from land development activities
- Impacts of impervious cover to water quality & stormwater runoff (quality & quantity)
- Road salt use and storage

#### Prepared by:

Sunapee Area Watershed Coalition  
Primary Contact: Deane Geddes, Chair  
Watershed Planning Committee

With appreciation to NH DES and UVLSRPC

Granite State Rural Water Assoc.  
322 Village Street, Penacook, NH  
603-753-4055  
e-mail: [info@gsrwa.com](mailto:info@gsrwa.com)

# Water Quality Concerns: 2018

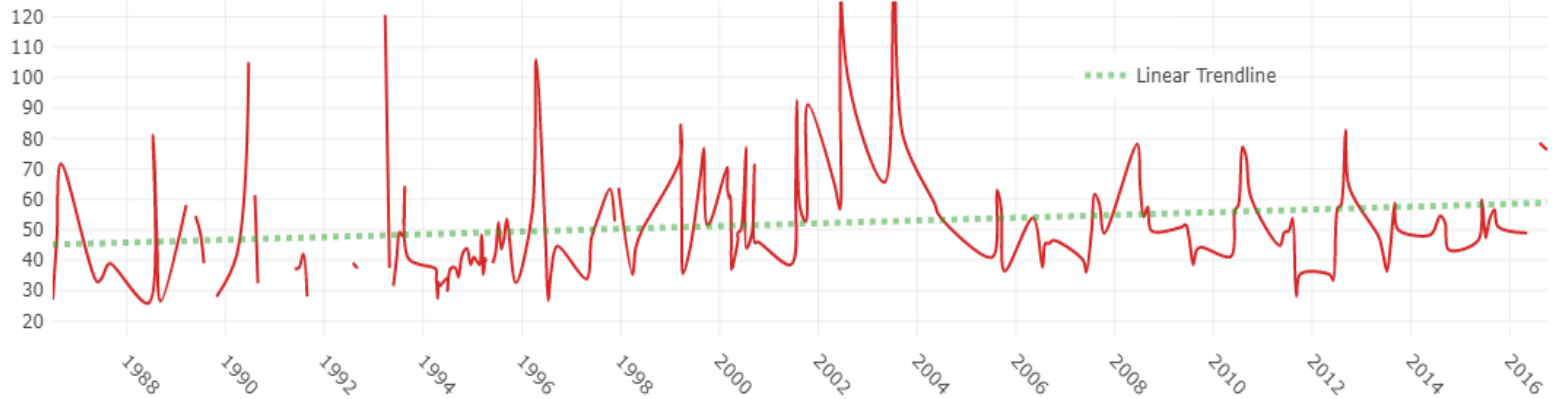
Related to land use practices, land disturbance,  
increased development including impervious/  
nearly impervious surfaces

- ↑ Total Phosphorus: long term trend is increasing
- ↑ Specific Conductivity: (primarily chlorides/road salts), other contributors
- ↑ Cyanobacteria: generally, phosphorus availability, sunlight, warmer temps
- ↑ Water Temperatures: climatic changes, impervious surfaces

# Tributary Specific Conductivity ~ mostly chlorides

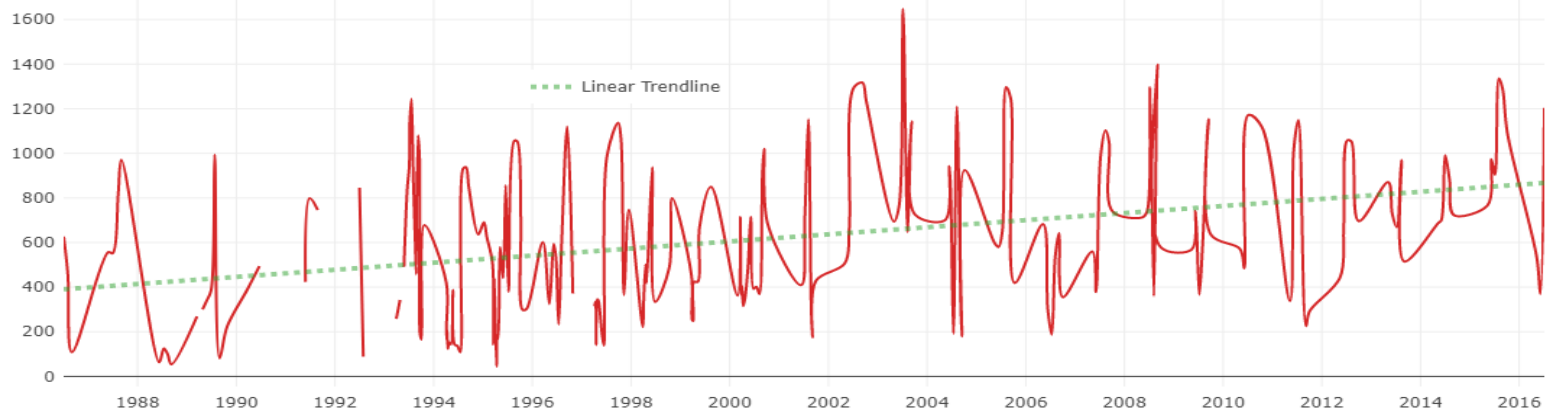
## Blodgett Brook

Conductivity in uS



## Herrick Cove N

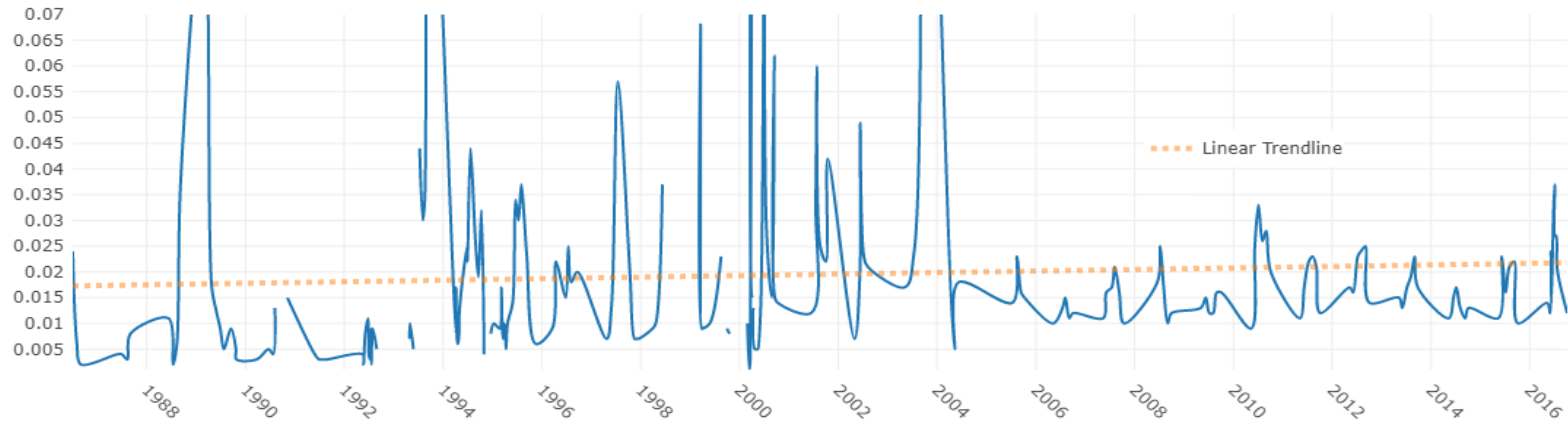
Conductivity in uS



# Total Phosphorus

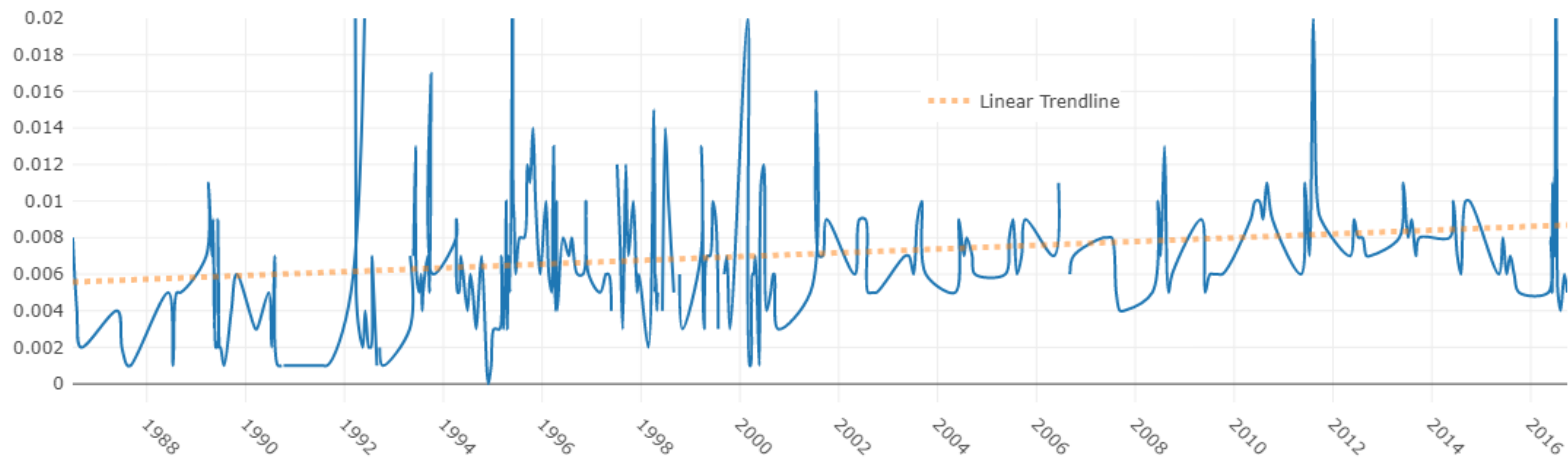
## Blodgett N

Total Phosphorus in mg/L



## Otter Pond Brk

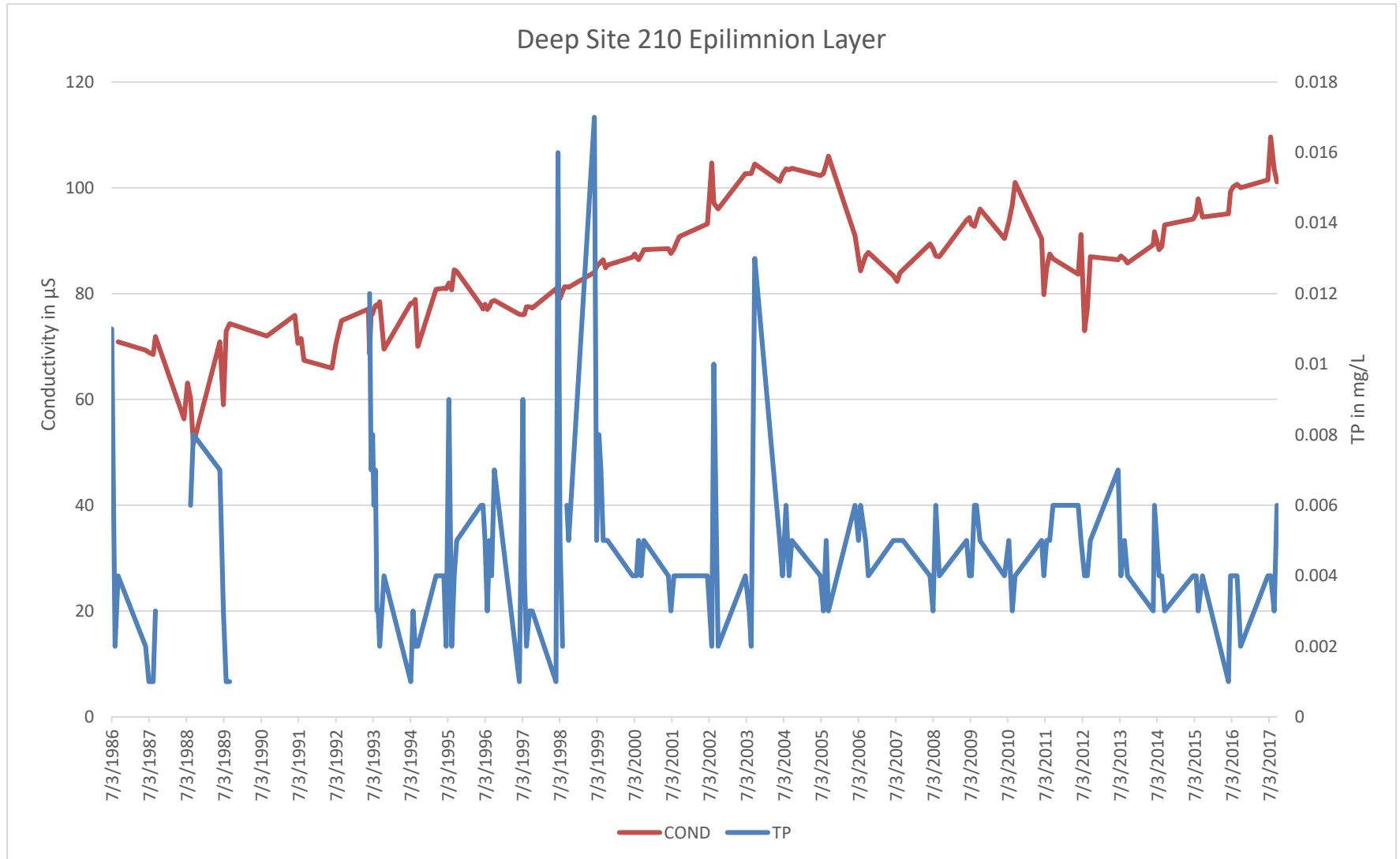
Total Phosphorus in mg/L



Conductivity

# Lake Sunapee Long-term

Total Phosphorus





Herrick Cove, Lake Sunapee



# Lake Sunapee, 30 years of Water Temperature

