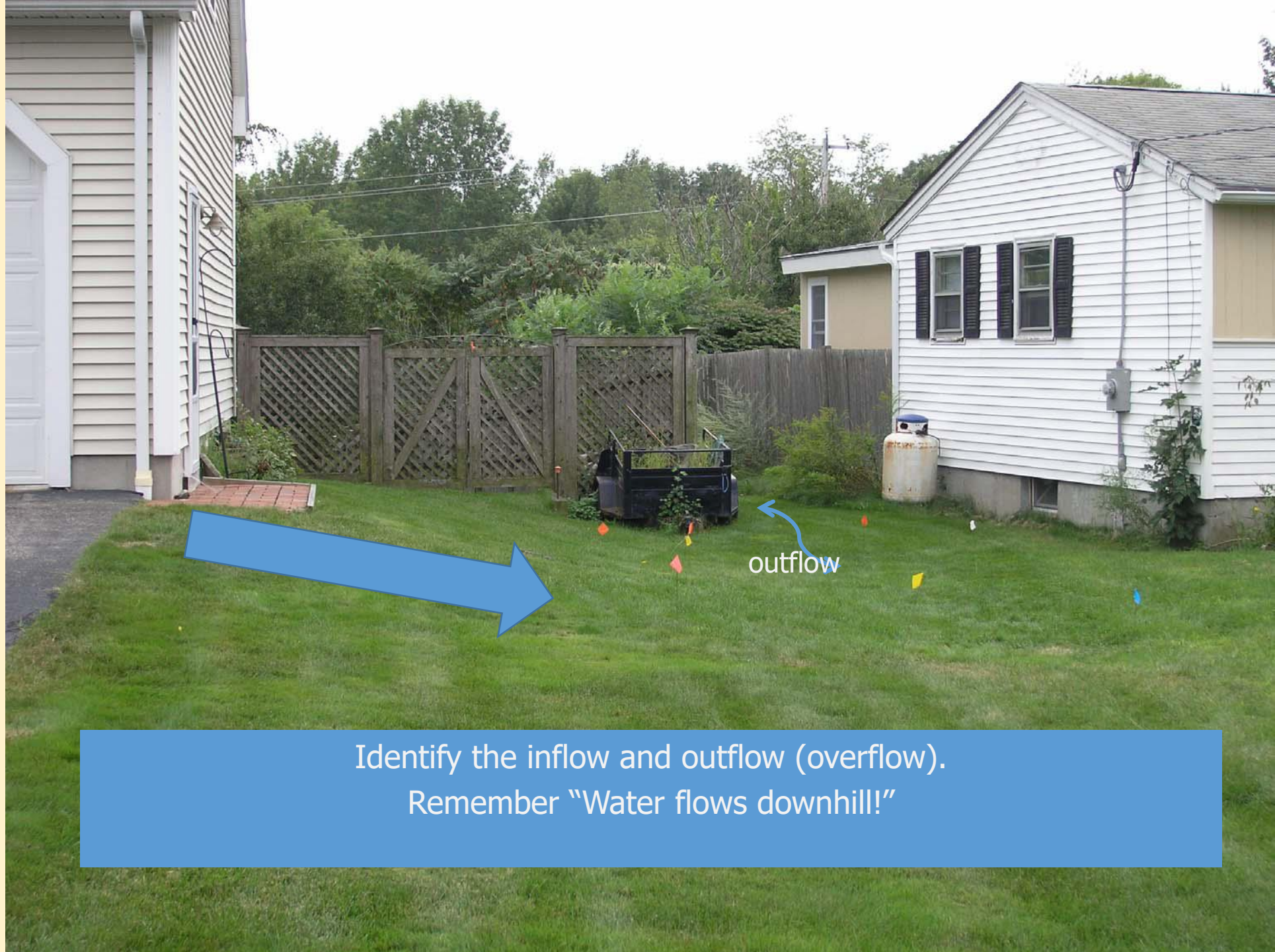




$\frac{1}{2}$ garage roof =
416 square feet

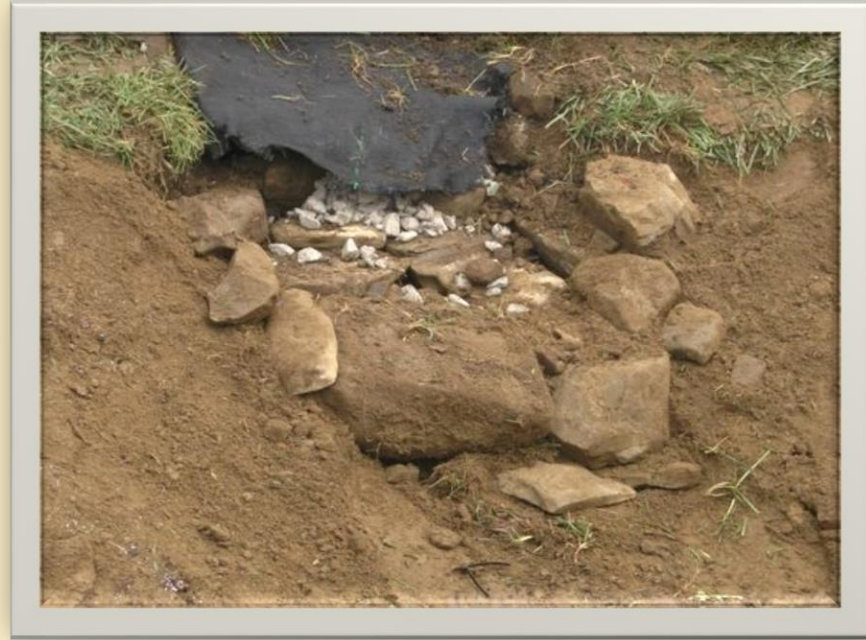


outflow

Identify the inflow and outflow (overflow).
Remember "Water flows downhill!"







Inflows and Outflows

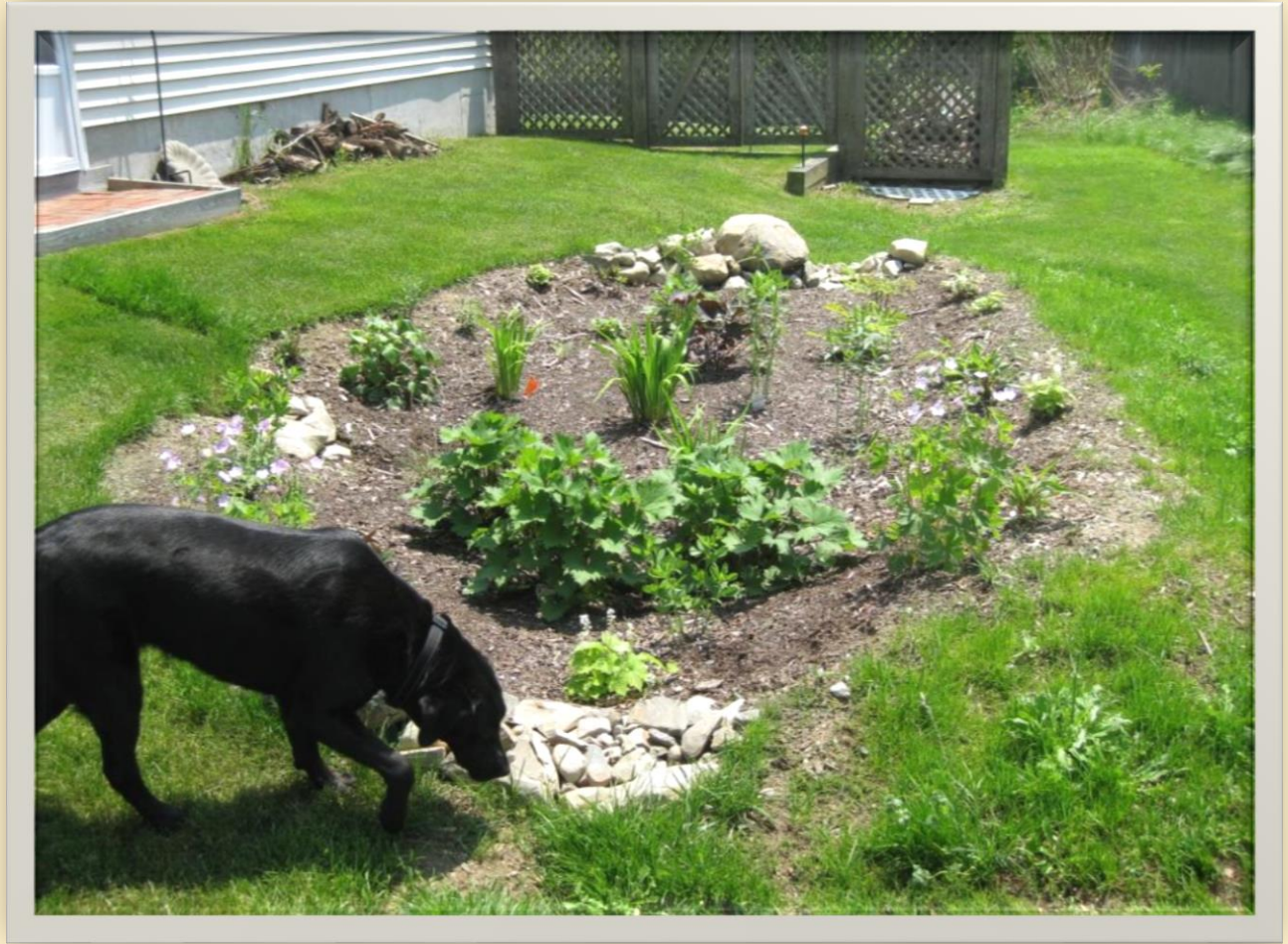
Sometimes landscape fabric is pinned underneath rock to protect soil against erosion. In other cases pipes may bring water directly to the rain garden.

Leveling

Check the depth
level and mea









Did water flow too fast, creating rills or gullies or washing soil from around plants?

Replace/add plants

Build up berm or add rocks



Rain Garden Maintenance



- Watering
- Mulching
- Weeding
- Pruning/trimming
- Inspecting
- Removing sediment
- Cleaning clogged inlets/outlets



<https://extension.unh.edu/programs/landscape-installation-maintenance>

<http://extension.unh.edu>

Environmental Horticulture is an important and diverse industry in New Hampshire. It is made up of over 800 businesses who produce, sell, install and care for landscape plants (trees, shrubs and perennials) greenhouse crops/flowers, and turfgrass. The value of this "Green Industry" exceeds \$522 million each year in sales of products and services.

FEATURED



Plant Selection and Design



Planting and Maintenance of Trees and Shrubs



Rain Gardens



Landscaping for Water Quality



Pollinator Habitats



Wildflower Meadows

