

Saving Special Places

April 7, 2018

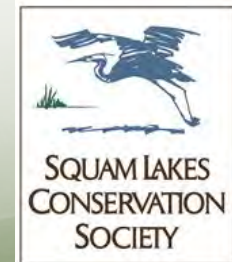
2 F: Really? Seriously? Interpreting Confounding Conservation Easement Scenarios

The lawyers are gone. The tax deduction has been taken. It's time to figure out how to handle the complicated and potentially conflicting language in the conservation easement. Join three seasoned stewardship professionals to review difficult scenarios and come up with your own ideas of what should or shouldn't be allowed. We'll use breakout groups to dig deep into the issues. This workshop will have you scratching your head! Stewardship - you've got to love it!

Jason Berard | *Upper Valley Land Trust*
Leah Hart | *Society for the Protection of NH Forests*
Pete Helm | *Squam Lakes Conservation Society*



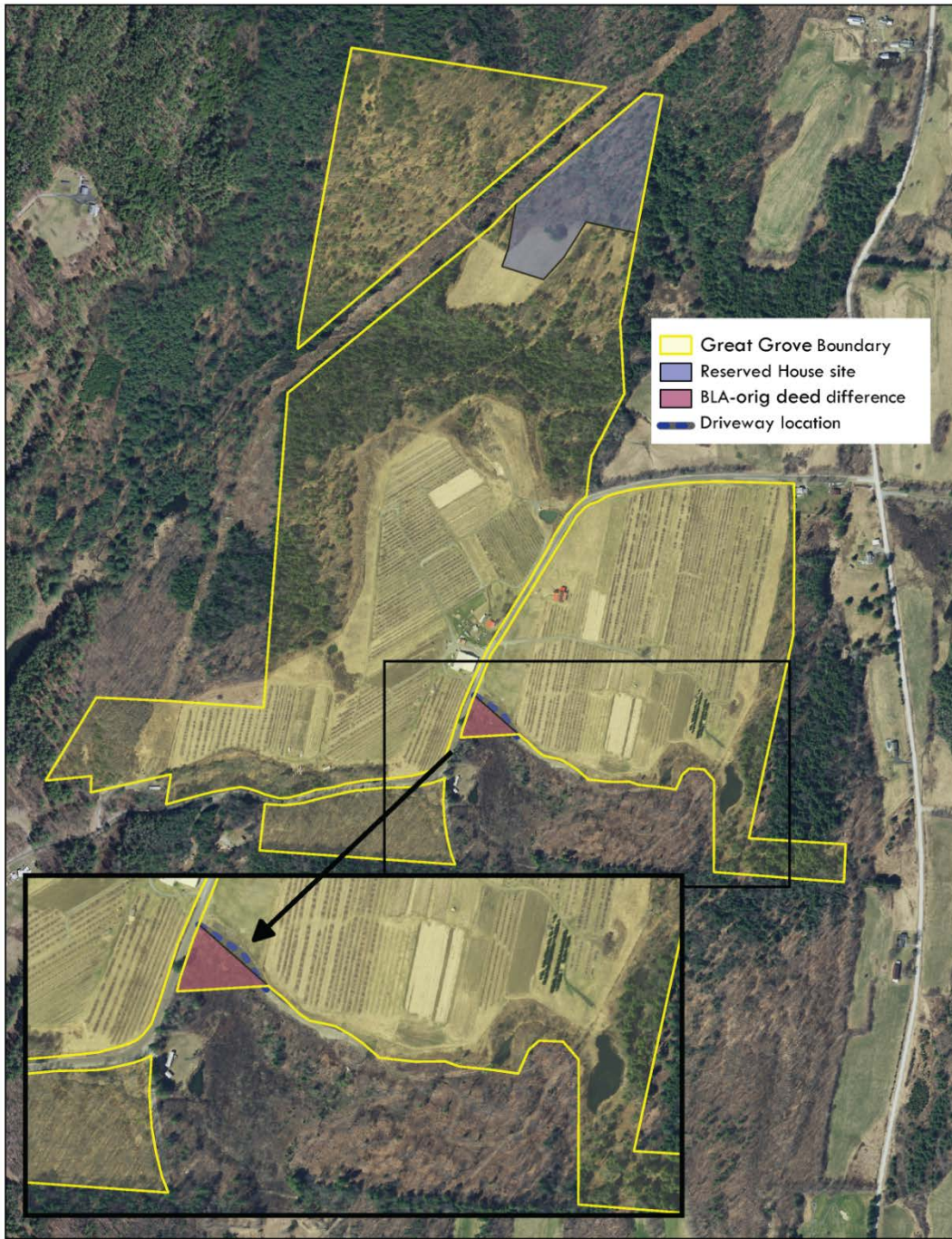
UPPER VALLEY
LAND TRUST



Workshop goals

- **Collaborate** as a small team to address **1 of 3** different confounding conservation easement scenarios.
- **Explore** differences and similarities within your group on how you might interpret easement language.
- **Agree** on best possible solution to your scenario.
- **Share** "major takeaways" with the entire group.

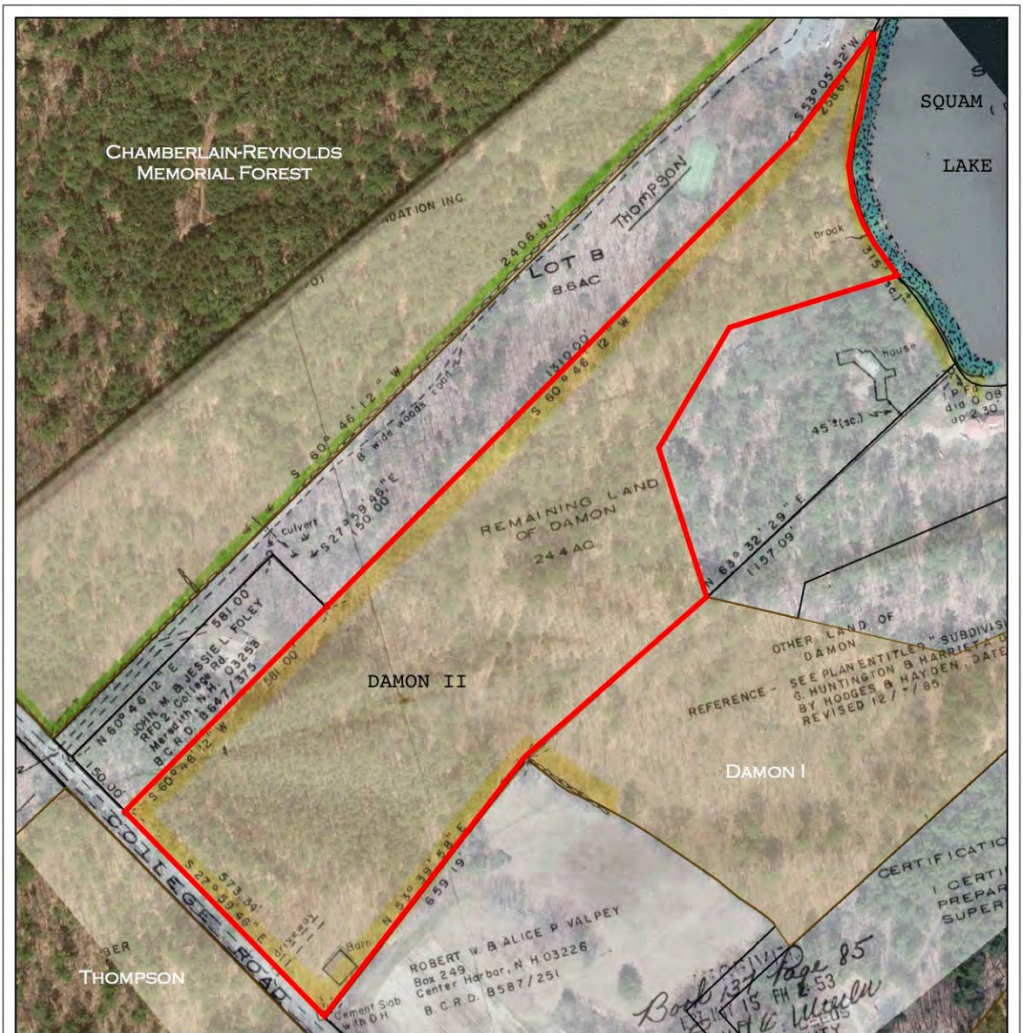
Scenario I



Scenario II



Scenario III



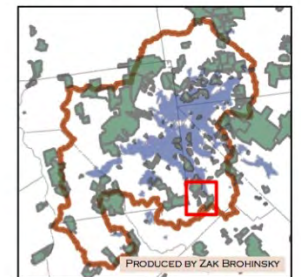
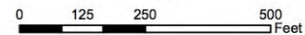
APRIL 2016



— Damon II CE Boundary

— CONSERVATION LANDS

1:3,000





Preparation and distribution of this presentation is made possible, in part, by the New Hampshire Bar Foundation's J. Albert and Mildred E. Lynch Fund