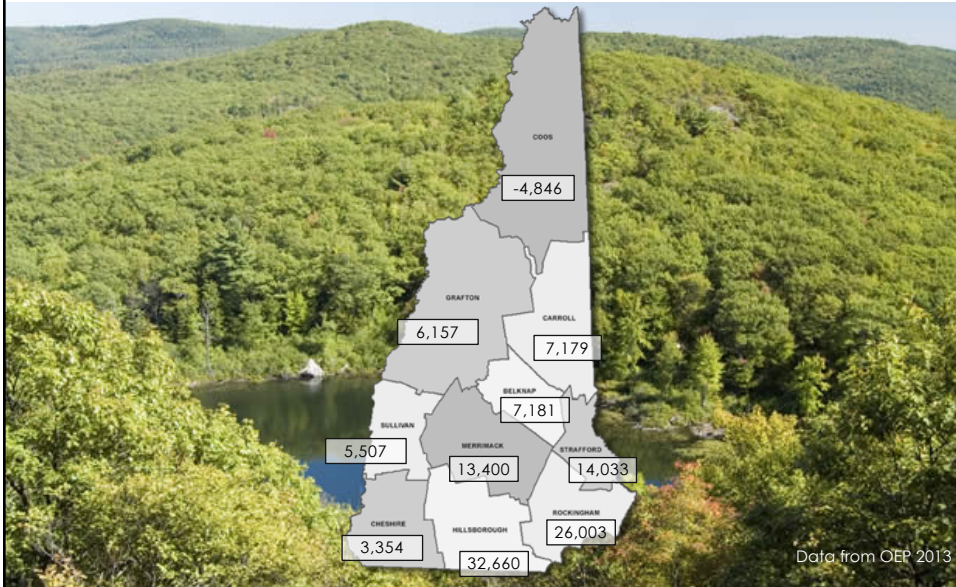


Conservation Strategies & Taking Action for Wildlife



New Hampshire is growing!



Data from OEP 2013

Total increase 2010-2040: 110,628 people

So what?



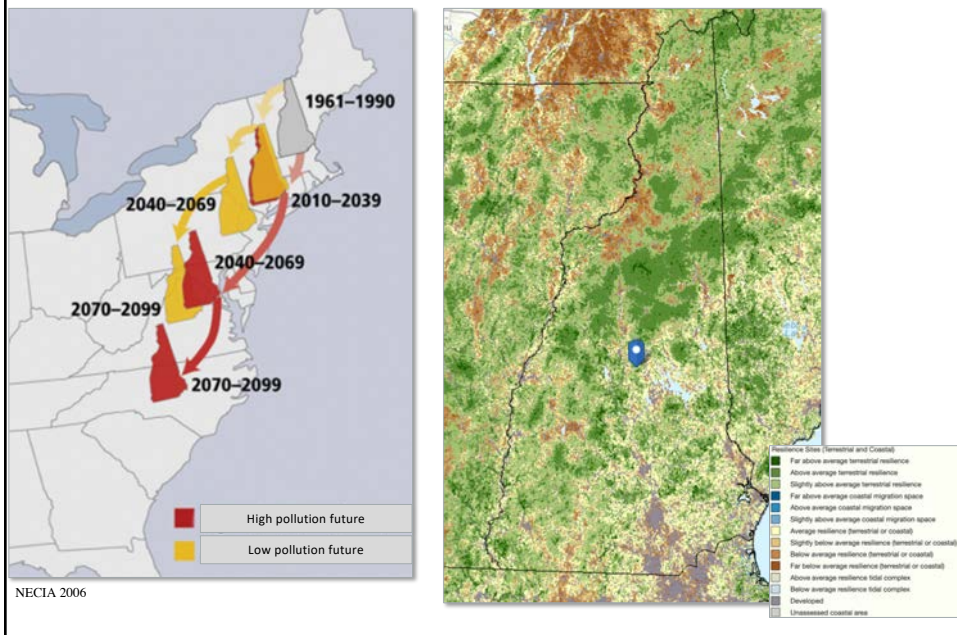
Why conservation planning?



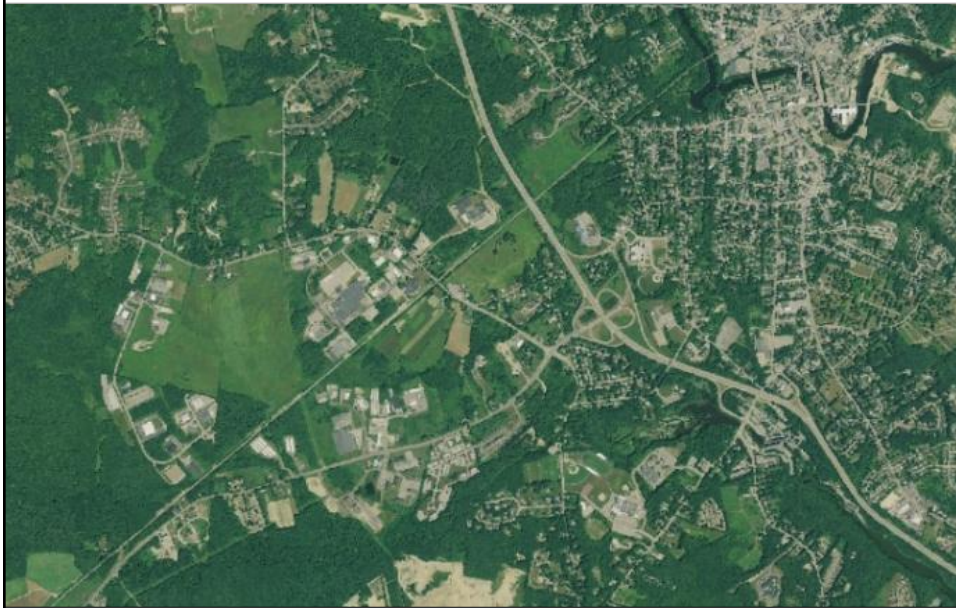
... and to maintain natural processes



... and to promote a resilient landscape



Why conservation planning for wildlife?



development & fragmentation

Consequences of habitat fragmentation

Habitat Block Size Requirements for Wildlife in Maine				
Tier 5	Tier 4	Tier 3	Tier 2	Tier 1
1-19 Acres	20-99 Acres	100-499 Acres	500-2500 Acres	Undeveloped
RACCOON	RACCOON	RACCOON	RACCOON	RACCOON
	HARE	HARE	HARE	COYOTE
SMALL RODENT	SMALL RODENT	SMALL RODENT	SMALL RODENT	SMALL RODENT
	PORCUPINE	PORCUPINE	PORCUPINE	PORCUPINE
COTTONTAIL	COTTONTAIL	COTTONTAIL	COTTONTAIL	BOBCAT
BEAVER	BEAVER	BEAVER	BEAVER	BEAVER
SQUIRREL	SQUIRREL	SQUIRREL	SQUIRREL	SQUIRREL
	WEASEL	WEASEL	WEASEL	WEASEL
	MINK	MINK	MINK	MINK
	WOODCHUCK	WOODCHUCK	WOODCHUCK	FISHER
	DEER	DEER	DEER	WOODCHUCK
MUSKRAT	MUSKRAT	MUSKRAT	MUSKRAT	DEER
			MOOSE	MUSKRAT
RED FOX	RED FOX	RED FOX	RED FOX	MOOSE
SONGBIRDS	SONGBIRDS	SONGBIRDS	SONGBIRDS	RED FOX
		SHARP-SHINNED HAWK	SHARP-SHINNED HAWK	SONGBIRDS
			BALD EAGLE	SHARP-SHINNED HAWK
SKUNK	SKUNK	SKUNK	SKUNK	BALD EAGLE
		COOPER'S HAWK	COOPER'S HAWK	SKUNK
		HARRIER	HARRIER	COOPER'S HAWK
		BROAD-WINGED HAWK	BROAD-WINGED HAWK	HARRIER
			KESTREL	BROAD-WINGED HAWK
		HORNED OWL	HORNED OWL	KESTREL
		BARRED OWL	BARRED OWL	HORNED OWL
		OSPREY	OSPREY	BARRED OWL
		TURKEY	TURKEY	OSPREY
		VULTURE	VULTURE	TURKEY
		TURKEY	TURKEY	VULTURE
MOST REPTILES	MOST REPTILES	REPTILES	REPTILES	TURKEY
	GARTER SNAKE	GARTER SNAKE	GARTER SNAKE	REPTILES
	RING-NECKED SNAKE	RING-NECKED SNAKE	RING-NECKED SNAKE	GARTER SNAKE
MOST AMPHIBIANS	MOST AMPHIBIANS	MOST AMPHIBIANS	WOOD FROG	RING-NECKED SNAKE
		WOOD FROG	WOOD FROG	AMPHIBIANS

As the size of a habitat block decreases,

the number of the species supported by the habitat block declines

Consequences of habitat fragmentation



Increase in 'generalist' wildlife species

Consequences of habitat fragmentation



Loss of wildlife species with large home-ranges

Consequences of habitat fragmentation



Restricts Movement

Consequences of habitat fragmentation



Increased human-wildlife conflict

What can be done to protect habitats?



Identify & conserve large, unfragmented habitat blocks

What can be done to protect habitats?



Identify & conserve habitats of rare wildlife species
and exemplary natural communities

What can be done to protect habitats?



Conserve habitat blocks in close proximity to one another to facilitate wildlife movement

What can be done to protect habitats?

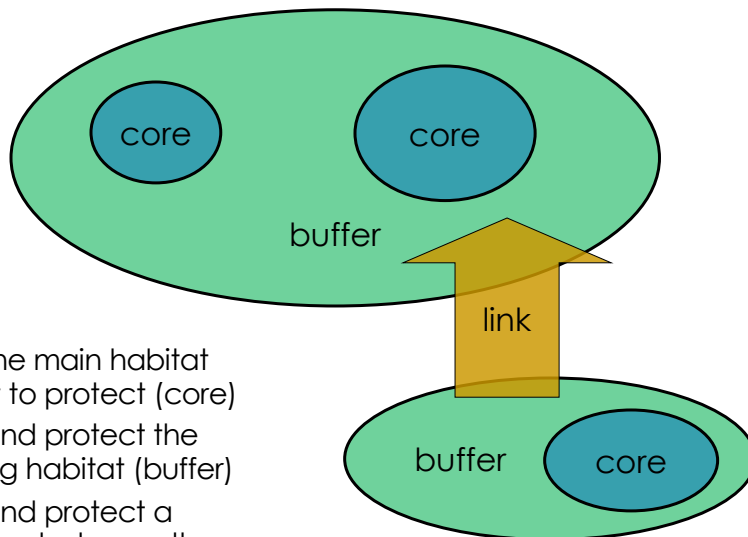


Maintain buffers around important habitats

Consider Edge Effects



The general approach to conserving habitats



- Identify the main habitat you want to protect (core)
- Identify and protect the supporting habitat (buffer)
- Identify and protect a connection between the habitat blocks (link)

Partnerships are key



landowners



land trusts



communities

Taking Action for Wildlife



What is the Wildlife Action Plan?



Restore rare wildlife and habitats.



Keep common species common.



Professional Input



Public Input

169 Species



bobolink



new england cottontail



wood turtle



silver-haired bat

27 Habitats



ma

Shrublands
Habitat Stewardship Series
NEW HAMPSHIRE WILDLIFE ACTION PLAN

Lowland Spruce-Fir Forests
Habitat Stewardship Series
NEW HAMPSHIRE WILDLIFE ACTION PLAN

Appalachian Oak-Pine Forests
Habitat Stewardship Series
NEW HAMPSHIRE WILDLIFE ACTION PLAN

Peatlands
Habitat Stewardship Series
NEW HAMPSHIRE WILDLIFE ACTION PLAN

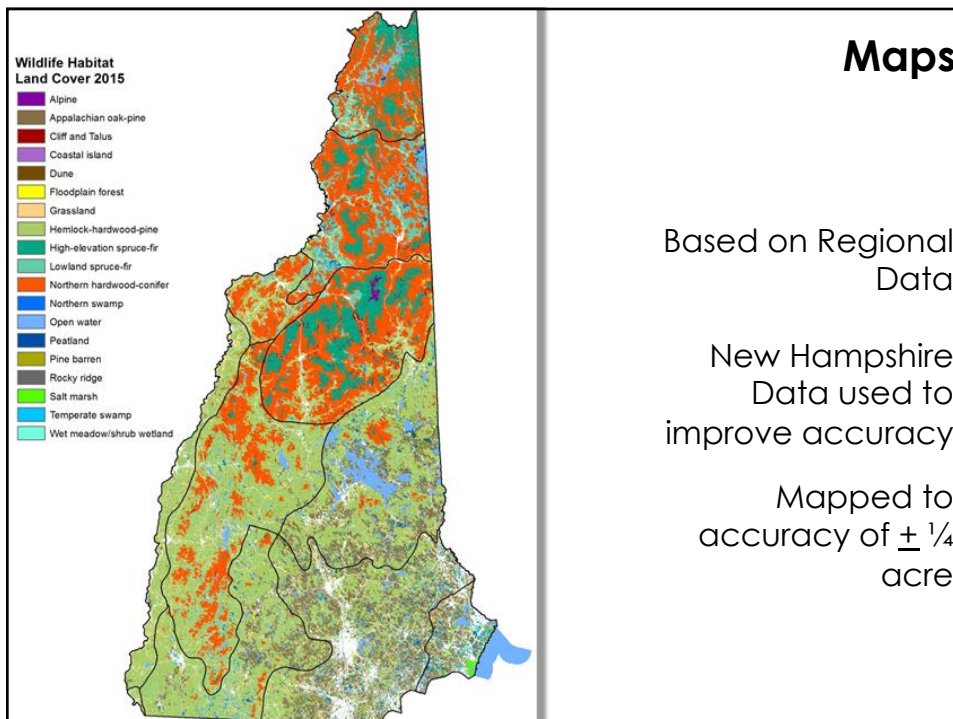
northern hardwood conifer

grasslands



Threats

- Pollution
- Climate Change
- Natural System Modifications
- Invasive and problematic species, genes, & diseases
- Development

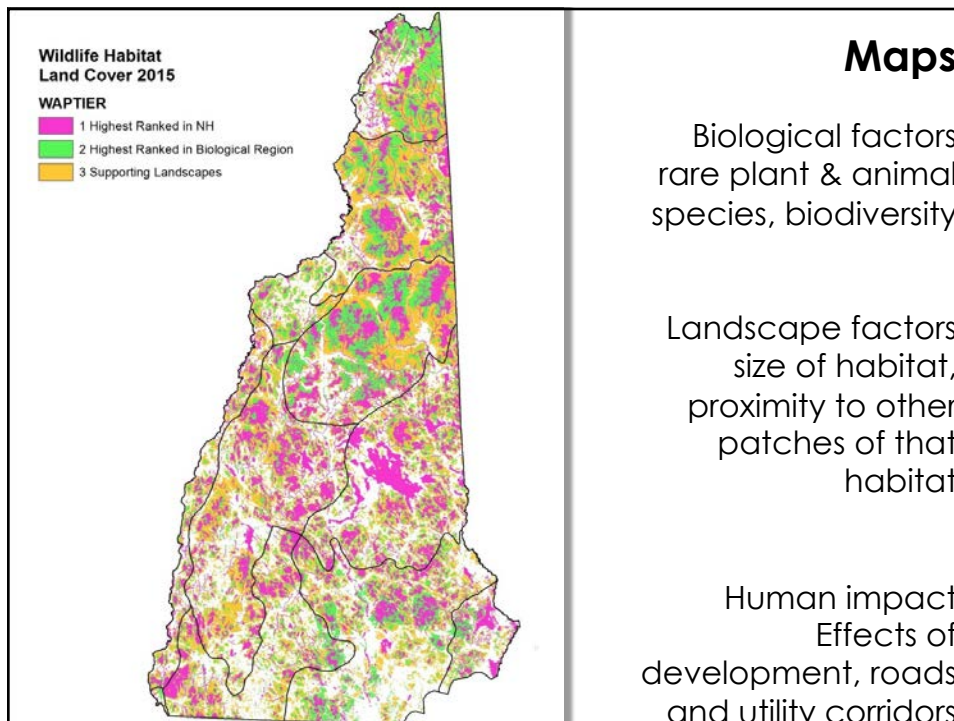
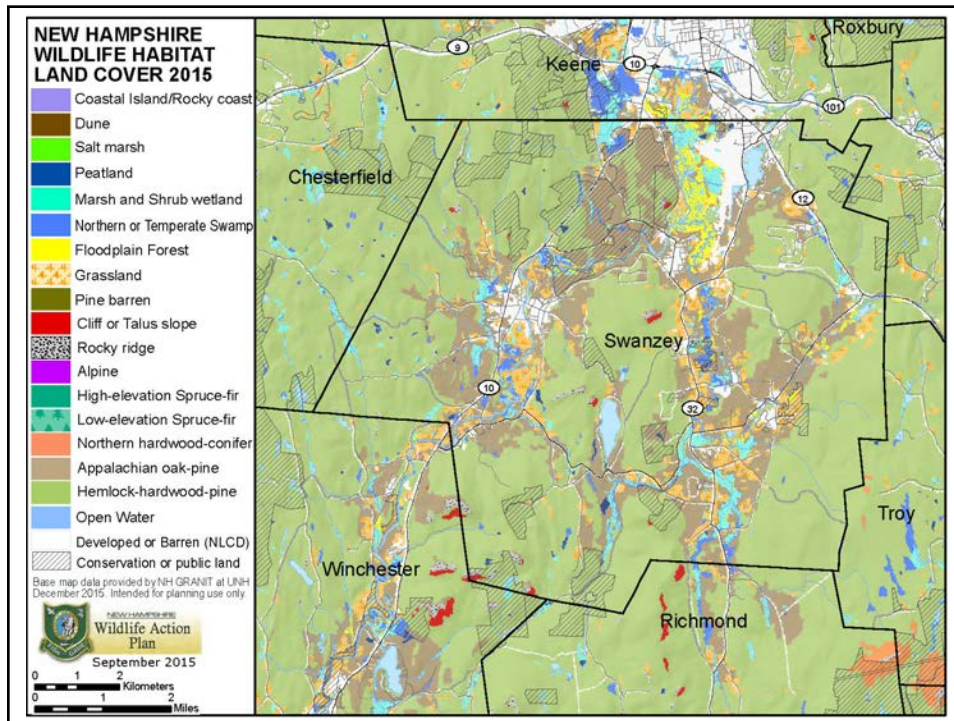


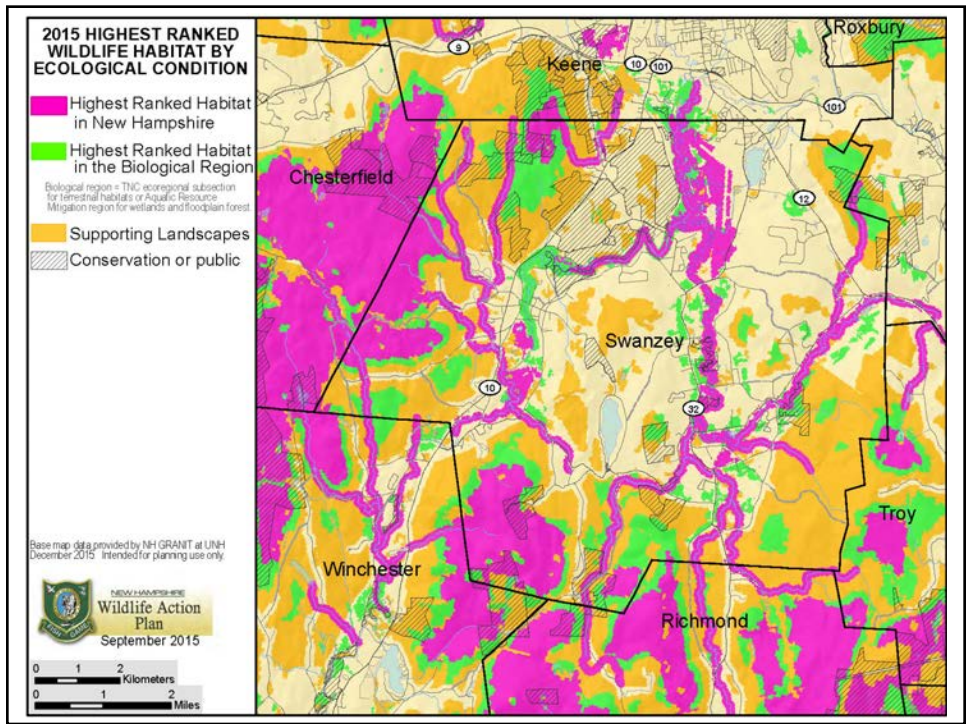
Maps

Based on Regional Data

New Hampshire Data used to improve accuracy

Mapped to accuracy of $\pm \frac{1}{4}$ acre





New Hampshire
FISH AND GAME
Connecting you to life outdoors.

Guardian of the state's fish, wildlife, and marine resources.

Search This Site **SEARCH**

Home | Hunting | Fishing | Coastal | Wildlife | OHV | Education | Newsroom | About

In This Section

- Conservation Planning Tools
- Habitats
- Town Maps
- Workshops, Events and Presentations
- Wildlife in NH
- Nongame & Endangered Wildlife Program

NH Wildlife Action Plan

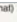
Taking Action for Wildlife!

How does NH Fish and Game and its many conservation partners around the state prioritize actions for wildlife and land management? How do you, as a member of your community and a landowner, become part of the movement to conserve and maintain New Hampshire's natural environment? The entire state has a plan that

WILDLIFE

Read the latest fascinating article, *A Helping Hand for Wildlife*, and subscribe to **NH Wildlife Journal**

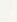
What is in the New Hampshire Wildlife Action Plan?

2015 Wildlife Action Plan Downloads (all files in PDF  format)

- [Read the Executive Summary](#)
- [List of SGCN and Habitats](#)


These documents are awaiting approval by the US Fish and Wildlife Service.


- [Introduction, Table of Contents, Acknowledgements and other front pieces](#)
- [Chapter 1: Public Participation](#)
- [Chapter 2: NH Wildlife and Habitats At Risk](#)
 - [How NH Chooses SGCN](#)
- [Chapter 3: NH Wildlife Habitat Conditions](#)
 - [Using the Wildlife Action Plan Maps](#)
- [Chapter 4: Wildlife Risk Assessment - Introduction](#)
 - [Chapter 4 includes:](#)
 - [Residential and Commercial Development](#)
 - [Agriculture and Aquaculture](#)
 - [Energy Production and Mining](#)
 - [Transportation and Service Corridors](#)
 - [Biological Resource Use](#)
 - [Human Intrusions and Disturbance](#)
 - [Natural System Modifications](#)
 - [Invasive and Other Problematic Species and Genes](#)
 - [Pollution](#)
 - [Climate Change and Severe Weather](#)
- [Chapter 5: Conservation Actions](#)
- [Chapter 6: Monitoring, Performance Evaluation, and Adaptive Management](#)
- [Chapter 7: Implementation](#)

Wildlife Action Plan Appendices (all files in PDF  format)


- [A: Species Profiles](#)
 - [Mammals](#)
 - [Birds](#)
 - [Reptiles](#)
 - [Amphibians](#)

New Hampshire Fish & Game Department

 **New Hampshire Wildlife Sightings** 



[Home](#) [Species of Interest](#) [Related Links](#) [Contact Us](#) [Login](#)



Tell us what you've seen!

WELCOME to NH Wildlife Sightings, a web tool for reporting wildlife observations in New Hampshire.

It's for everyone — landowners, foresters, outdoor sportspersons, wildlife enthusiasts... And it's easy!

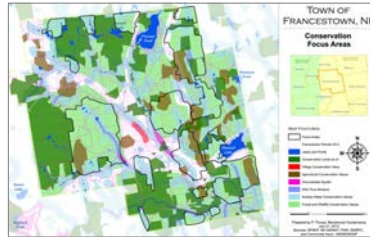
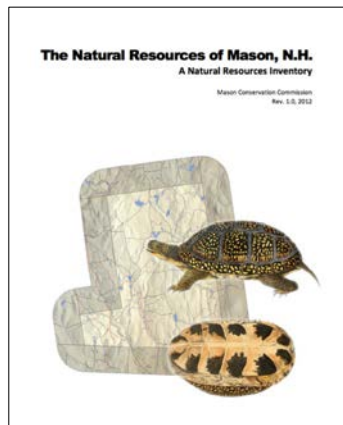
- Begin by creating your own **user account...**
- **Learn** how to use the reporting tools
- Review our wildlife **species of interest**
- **Visit links** of related information.

nhwildlifesightings.unh.edu

How can you **take action for wildlife?**



Land Protection



Jerry Monkman/SELT

Land Use Planning



Habitat Management



Education & Outreach



TAKING ACTION FOR WILDLIFE

[Sign Up for E-News](#)

Working Together to Conserve
New Hampshire's Wildlife and Habitats

Home
About
Take Action
Stories
Resources
Events



Bats in New Hampshire
New brochure features bats, their habitat, the threats they face, and actions you can take.

News, Stories & Resources about NH Wildlife | You will image

TAKING ACTION FOR WILDLIFE

Working Together to Conserve New Hampshire's Wildlife and Habitats



Flipping a Forest
Brothers and landowners Gordon Peckham and James Sowers III purchased a 70-acre woodlot in Lempster in 2014. Last year, they found the help they needed to take their land from low-quality timber to high-quality habitat.

[Learn More](#)

Featured Action for Wildlife



Learn to Identify Invasive Plants
Invasive plants pose a serious threat to our native habitats and wildlife. One of the best things you can do to help stop the spread of invasive plants is to learn how to tell them apart from other plants.

[Read more about this action that you can take for wildlife.](#)

[Explore All Actions](#)

TAKING ACTION
FOR WILDLIFE

[Sign Up for E-News](#)

Working Together to Conserve
New Hampshire's Wildlife and Habitats

[Home](#) [About](#) [Take Action](#) [Stories](#) [Resources](#) [Events](#)

RESOURCES BY AUDIENCE



LANDOWNERS



COMMUNITIES



CONSERVATION GROUPS

RESOURCES BY TOPIC



CLIMATE CHANGE

TAKING ACTION
FOR WILDLIFE

[Sign Up for E-News](#)

Working Together to Conserve
New Hampshire's Wildlife and Habitats

[Home](#) [About](#) [Take Action](#) [Stories](#) [Resources](#) [Events](#)

Stories

What:	Who:	
<input style="width: 80%;" type="text" value="- Any -"/>	<input style="width: 80%;" type="text" value="- Any -"/>	<input type="button" value="APPLY"/>



TAKING THE LONG VIEW: DAVID & TANYA TELLMAN

Don't say you haven't been warned. When you visit Dave and Tanya Tellman, landowners in Bethlehem, New Hampshire, you will be meeting the sort of forest enthusiasts that will make you want to go out and buy a big chunk of land, whether or not you have the time, the energy, or the means. Their passion for forestry, for plants, for wildlife, for working in the woods, for tilling the soil and harvesting fruits and vegetables from their land is deeply inspiring. I've spent the weeks since visiting them this summer quietly scheming about how



GOOD SEED YEAR FOR WHITE PINE TREES

Over the past few months, I have been noticing an abundance of white pine cones in the trees around Carroll county. Rather than producing consistent crops of seeds every year, white pine has good seed years every three to five years, with fewer seeds produced in the intervening years.



CAMPTON'S FROZEN BOG WALK

Planning outreach in your community? Take a page from Campton's book and consider hosting an outdoor field event exploring local habitats. In 2012, Conservation Commissioners in Campton, NH decided to focus some attention on a special natural feature in their town, Bog Pond, that was identified as important habitat on the Wildlife Action Plan Highest Ranked Habitats map. They started by reviewing the Wildlife Action Plan maps for Campton to identify habitat types and highest ranked habitats.

TAKING ACTION FOR WILDLIFE

[Home](#)
[About](#)
[Take Action](#)
[Stories](#)
[Resources](#)
[Events](#)

[Sign Up For E-News](#)

Working Together to Conserve New Hampshire's Wildlife and Habitats

Take Action

There are many actions you can take to protect wildlife and habitats, whether you are a community board member, landowner, land trust, other conservation group or interested individual. There is a lot of overlap in how different audiences can take action for New Hampshire's wildlife, but you can start exploring actions based on who you are. Then, you'll be able to filter actions down by what you're interested in doing.

I AM A...



LANDOWNER



COMMUNITY BOARD OR COMMITTEE



CONSERVATION ORGANIZATION



NATURAL RESOURCES PROFESSIONAL



INTERESTED CITIZEN

TAKING ACTION FOR WILDLIFE

[Home](#)
[About](#)
[Take Action](#)
[Stories](#)
[Resources](#)
[Events](#)


[Sign Up For E-News](#)

Working Together to Conserve New Hampshire's Wildlife and Habitats

Landowner


I want to:

Manage habitat
APPLY




USE UNTREATED PLANTS

Pesticides have received significant attention for their potential role in pollinator population declines. Individuals and communities who are looking to help conserve pollinators can plant habitat that supports their populations, including a diversity of flowering plants. However, some seeds and plants sold at garden centers have been previously treated with systemic pesticides, including neonicotinoids. This can threaten bees and other pollinators as they pollinate or forage on treated plants.



GET MONEY FOR MANAGEMENT

Managing habitat for wildlife can require some out-of-pocket expenses for landowners. The good news is that programs exist to offset some costs. UPH Cooperative Extension maintains a simple overview of the programs available to landowners in NH. A good first step to learn about financial assistance is to contact your local UPH Cooperative Extension county forester to learn what programs might fit your land and your interests.



PROTECT SHORELINE AND RIPARIAN HABITATS

The shorelines of lakes, ponds, and rivers are valuable real estate in New Hampshire, but their importance as wildlife habitat is also significant. The quality of riparian habitat (land adjacent to and directly influenced by streams, rivers, ponds, and lakes) may be the single biggest influence on the abundance and variety of wildlife that live in or around a water body. Lakes, ponds and rivers with plentiful natural vegetation and undeveloped shores surrounded by large blocks of forest will support the greatest number of wildlife species.

Questions?

