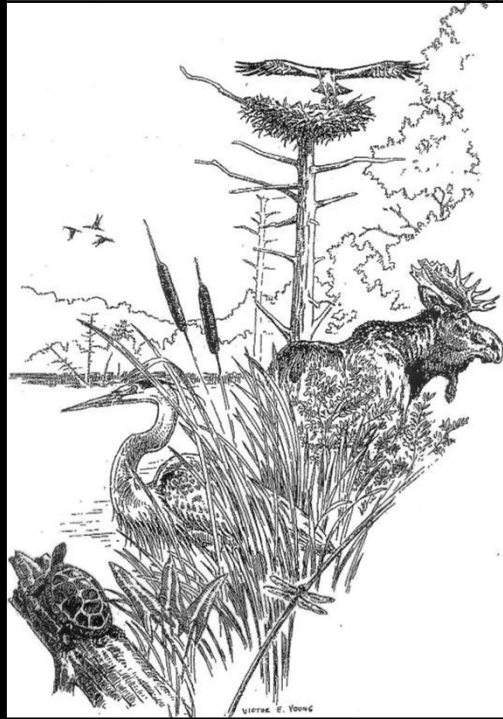


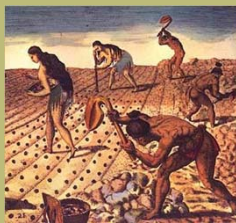
New Hampshire's Wild History: 350 Years of NH Wildlife

Speaking for Wildlife
UNH Cooperative Extension



History of New Hampshire Wildlife

- History of how people have used the land



- Our relationship with wildlife over time



Wildlife Timeline in New Hampshire

- Pre 1700s
- 1700 – 1800
- 1800 – 1900
- 1900 – 1950
- 1950 – Today

Status of
Wildlife
Today



Prior to 1700 - Pre-Settlement



Harvard University - Dioramas

Speaking for Wildlife - UNH Cooperative Extension

Prior to 1700 - Pre-Settlement



Prior to 1700 - Pre-Settlement



Prior to 1700 - Pre-Settlement



Prior to 1700 - Pre-Settlement



Wolf



Bobcat



Lynx



cougar

Beaver



USFWS

Speaking for Wildlife- UNH Cooperative Extension

Prior to 1700 - Pre-Settlement



1700-1800



Harvard University - Dioramas

Speaking for Wildlife - UNH Cooperative Extension



1800-1900



Library of Congress

Speaking for Wildlife - UNH Cooperative Extension

1800-1900



USFWS

Speaking for Wildlife - UNH Cooperative Extension



1800-1900

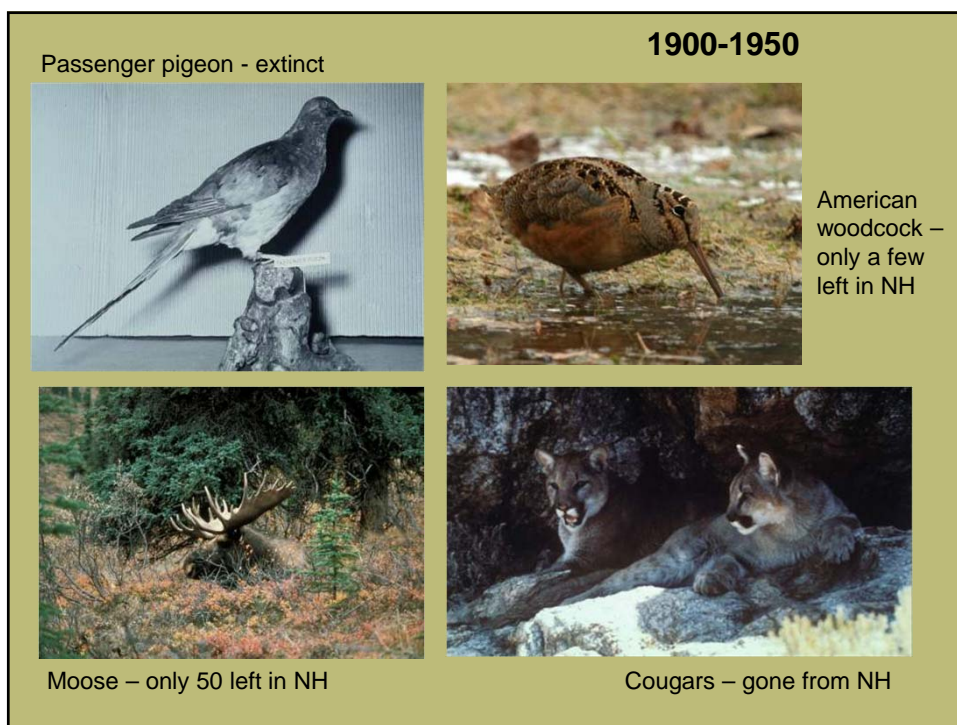
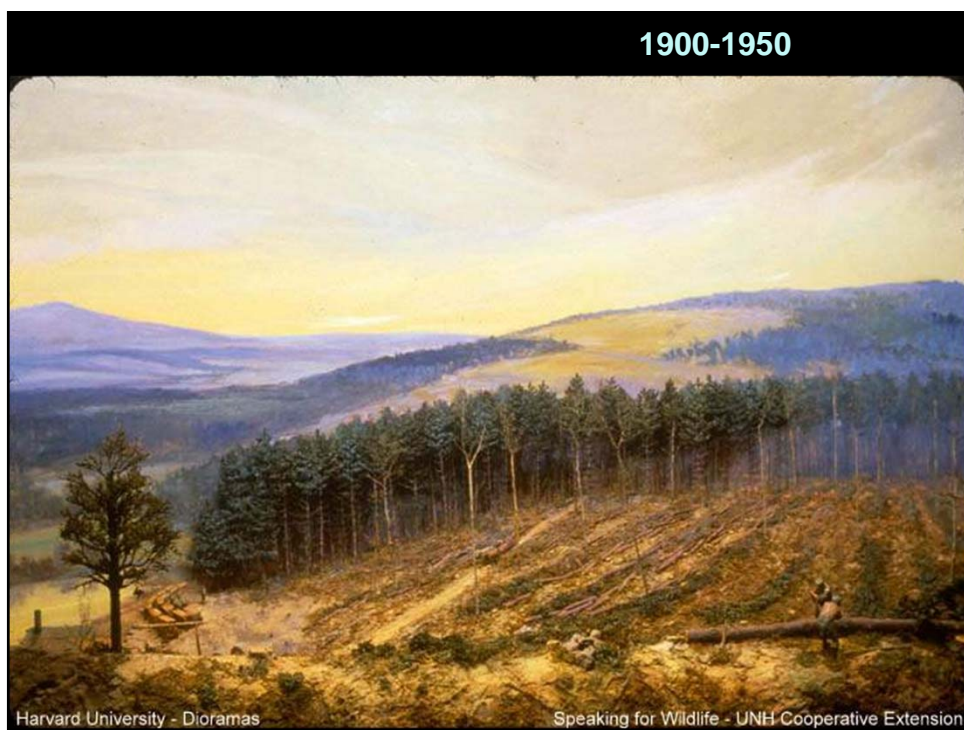


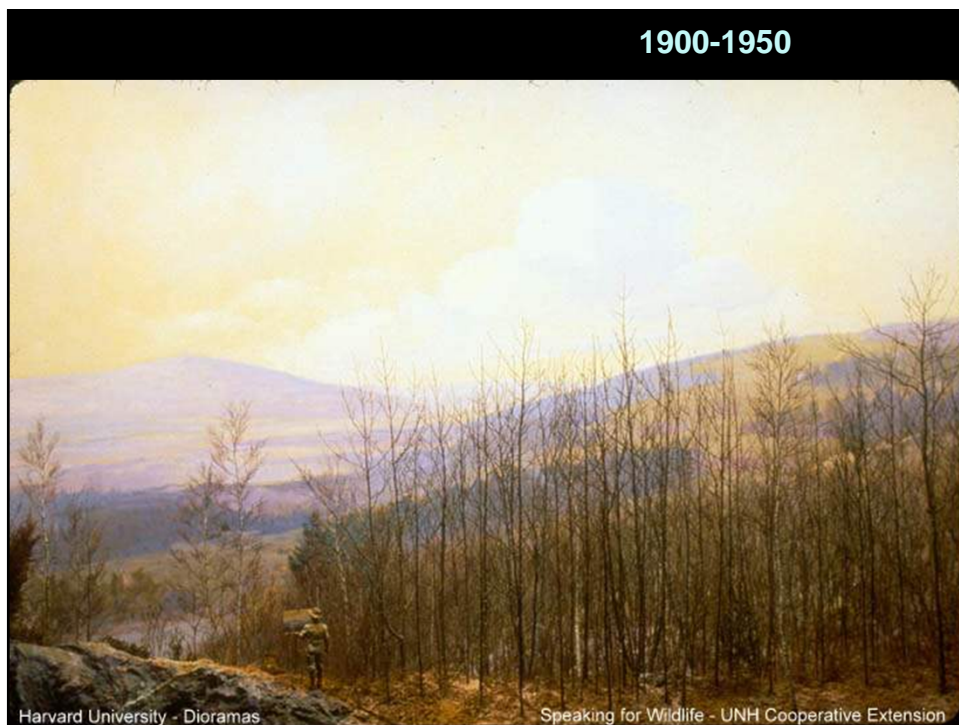
1800-1900

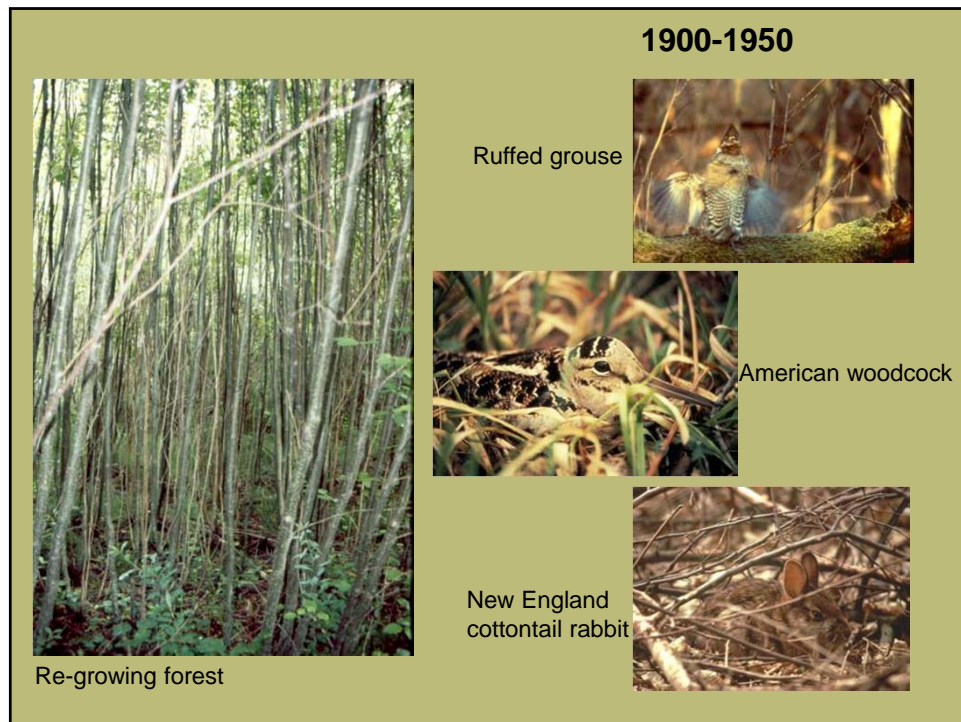


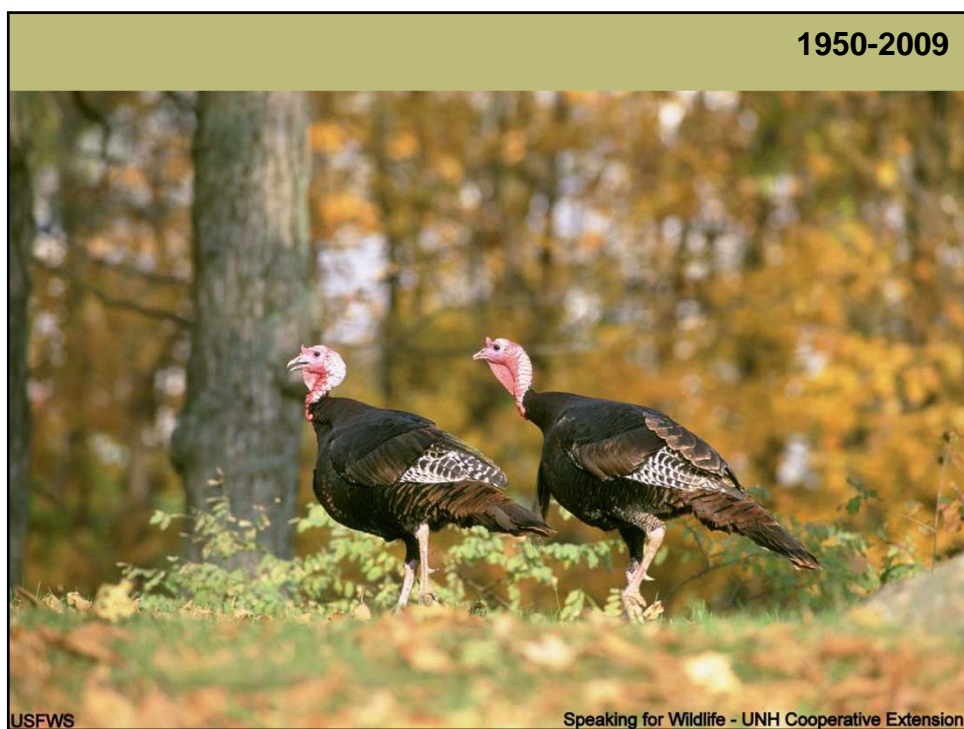
Harvard University - Dioramas

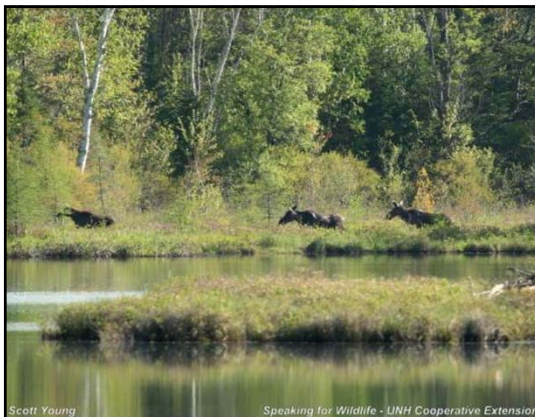
Speaking for Wildlife - UNH Cooperative Extension







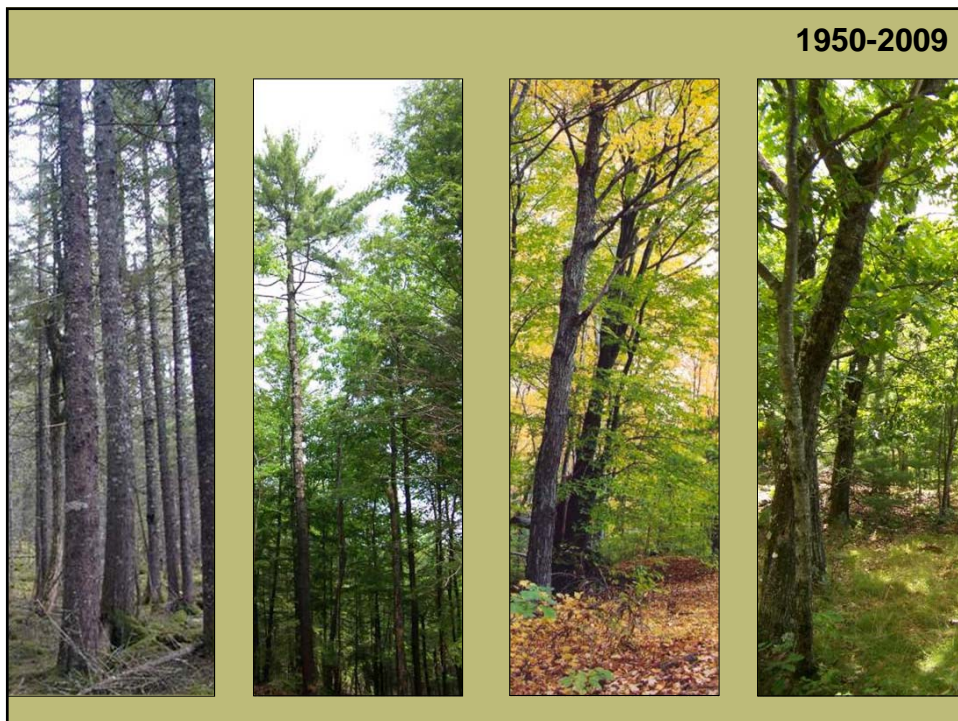




Scott Young


Speaking for Wildlife - UNH Cooperative Extension








Northern leopard frog



Smooth green snake




1950-2009



American woodcock

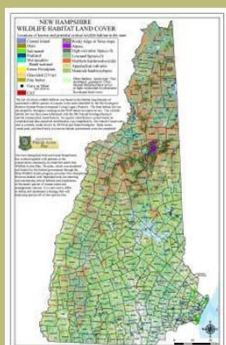
Shrublands





NH Wildlife Action Plan

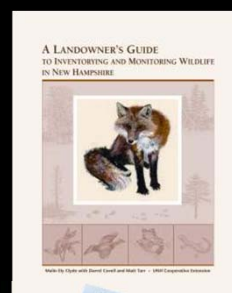
- Completed in 2006
- Identified 123 species and 27 habitats in greatest need of conservation
- Known and potential locations of 27 habitats mapped across the state
- Wildlife Action Plan is a tool for the state, communities and landowners



How can you learn more?

Explore your property or local town forest

- Learn about the history of the land.
- Take an inventory
 - What habitats are there?
 - What species are there?
- Learn to recognize species and habitats using the **Habitat Stewardship Brochures** as a guide
- Are you a landowner? Contact your UNH Cooperative Extension County Forester for a free site visit



Get Involved!

- Sign up for *Taking Action for Wildlife* e-newsletter
- Learn about other workshops from UNH Cooperative Extension
- **NHWoods.org**
- **WildNH.com**



Speaking for Wildlife Sponsors



UNIVERSITY of NEW HAMPSHIRE
COOPERATIVE EXTENSION

