

Conservation Planning:

**Developing a vision for the future
ecological health of an area and the
maintenance of farm and managed
forest lands**



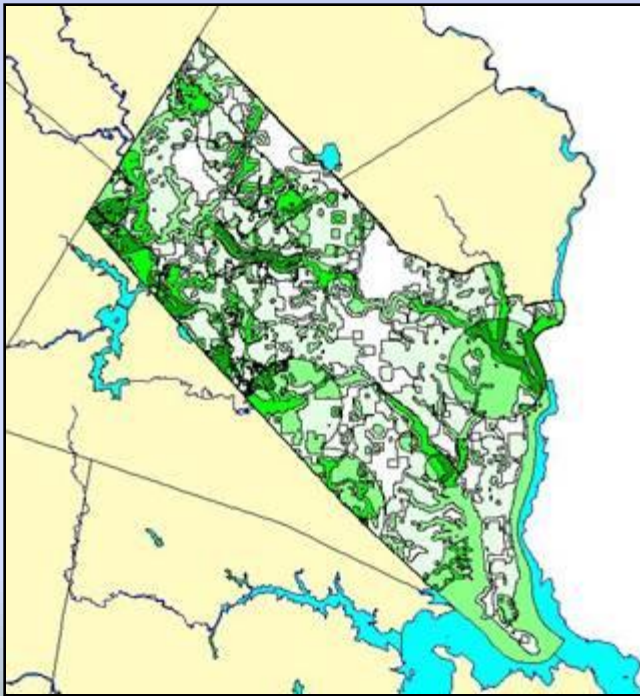
Community Planning Action:

Why create a conservation plan?

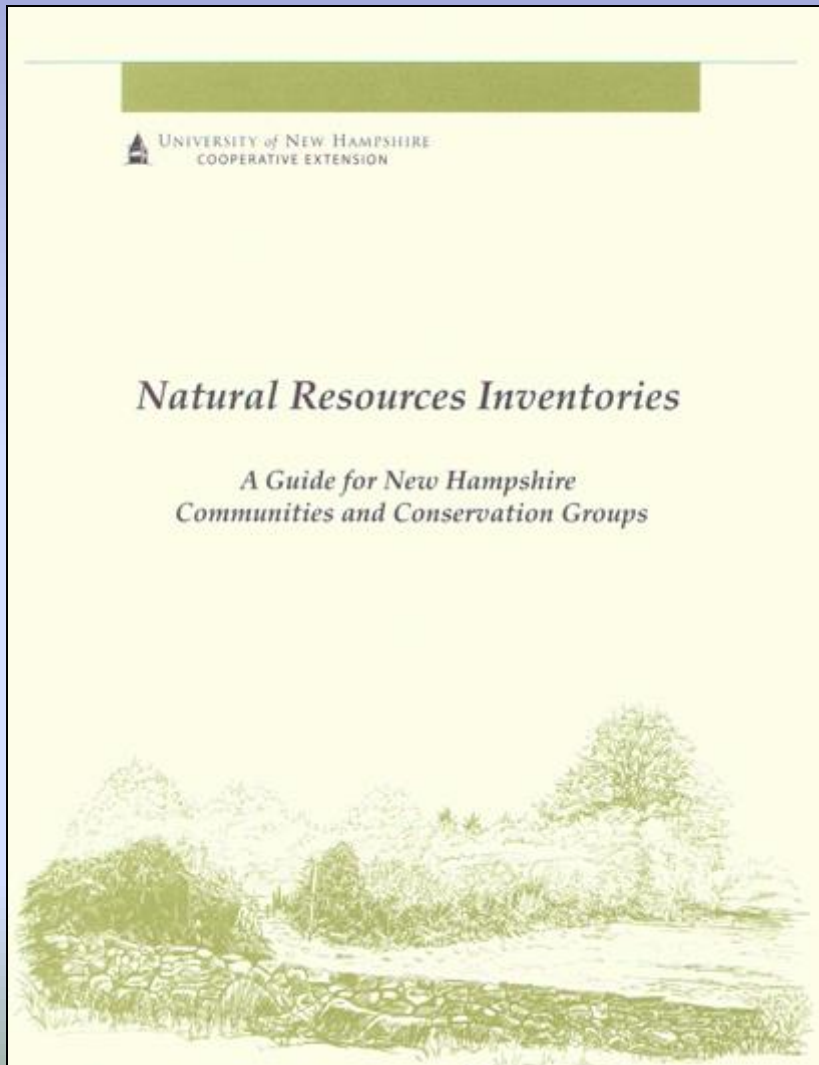
- **Identify and describe the most important natural features and resources**
- **Promote conservation of these**
- **Guide municipal or private voluntary land conservation planning**
- **Document conservation priorities and recommended policies in a municipal master plan**
- **Suggest regulatory protection for some features and resources**

Natural resource inventories:

What and where natural resources are.



Natural Resource Inventory



**Basic Inventory:
Existing GIS data**

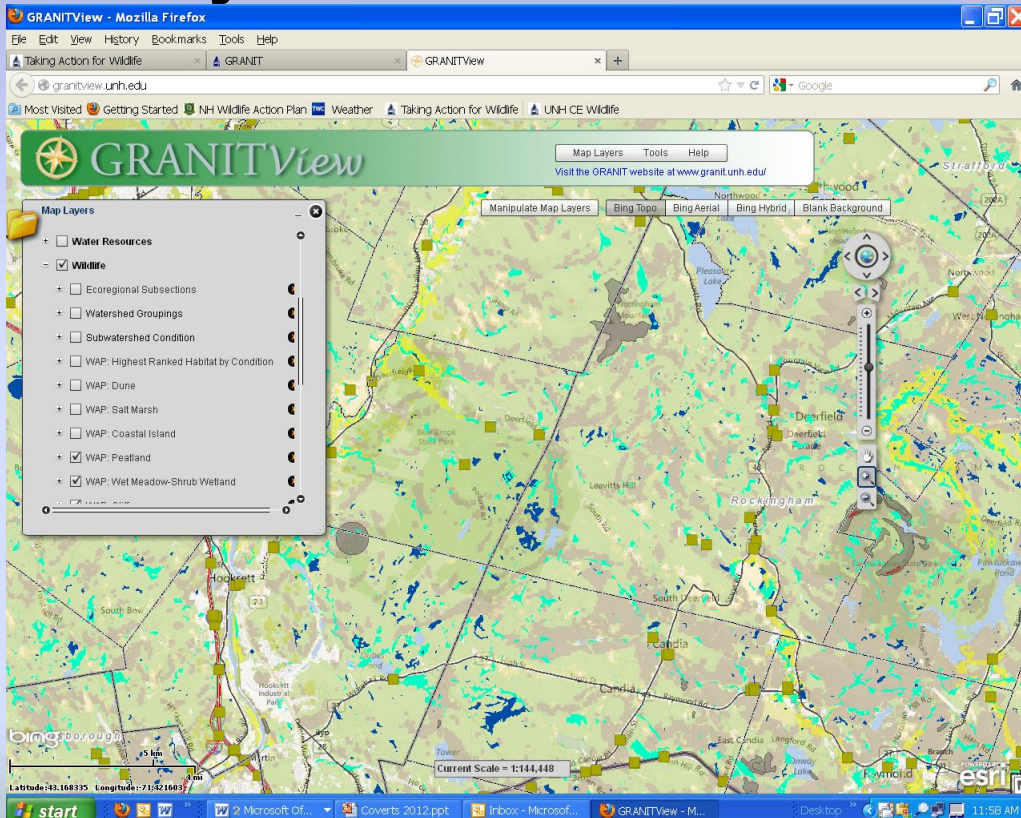
**Detailed Inventory :
Adding locally produced
data**

**This book is available from
UNH Cooperative Extension:
<http://extension.unh.edu/>**

Mapping Tools

GRANITView

Free online tool with NH data already loaded.



ArcGIS is the most common powerful software but there are free alternatives!

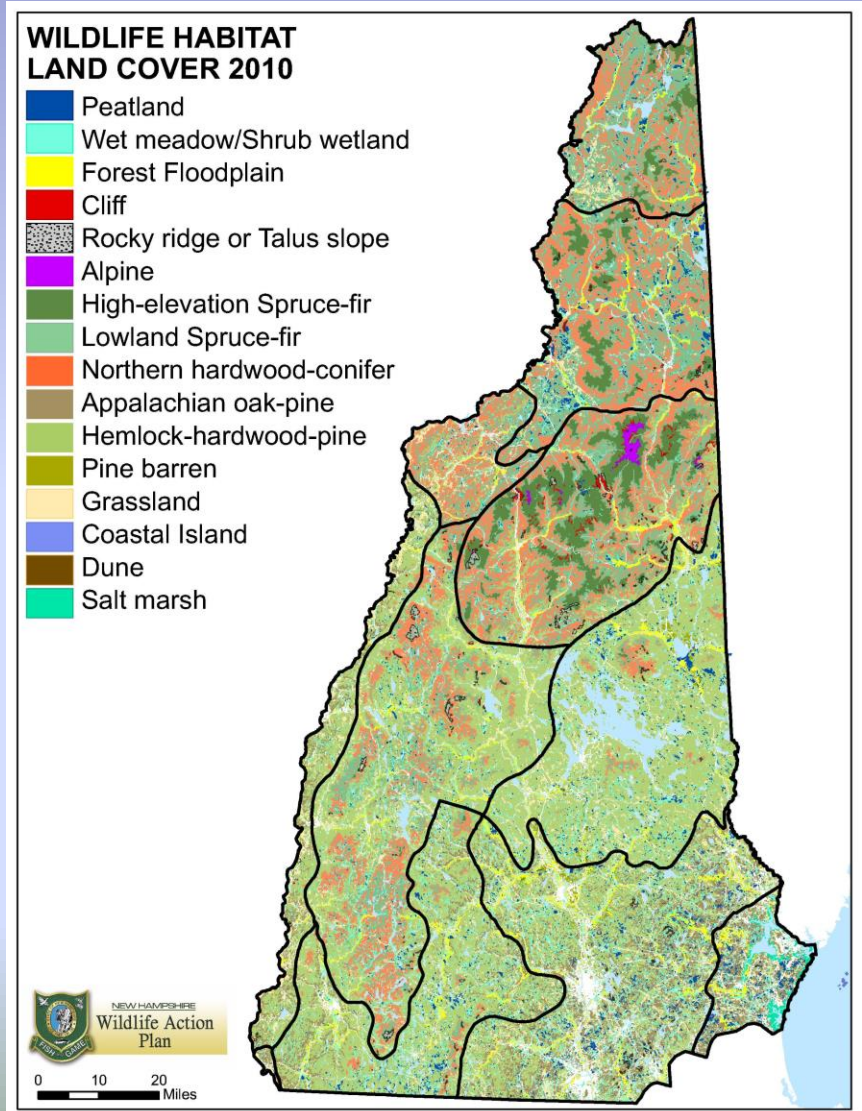
See UNH Cooperative Extension GIS/GPS workshops for training and online resources.

<http://granitview.unh.edu/>

Wildlife Action Plan Maps

New Hampshire Wildlife Habitat Land Cover

16 Habitat Types



New Hampshire WILDLIFE HABITAT LAND COVER 2010

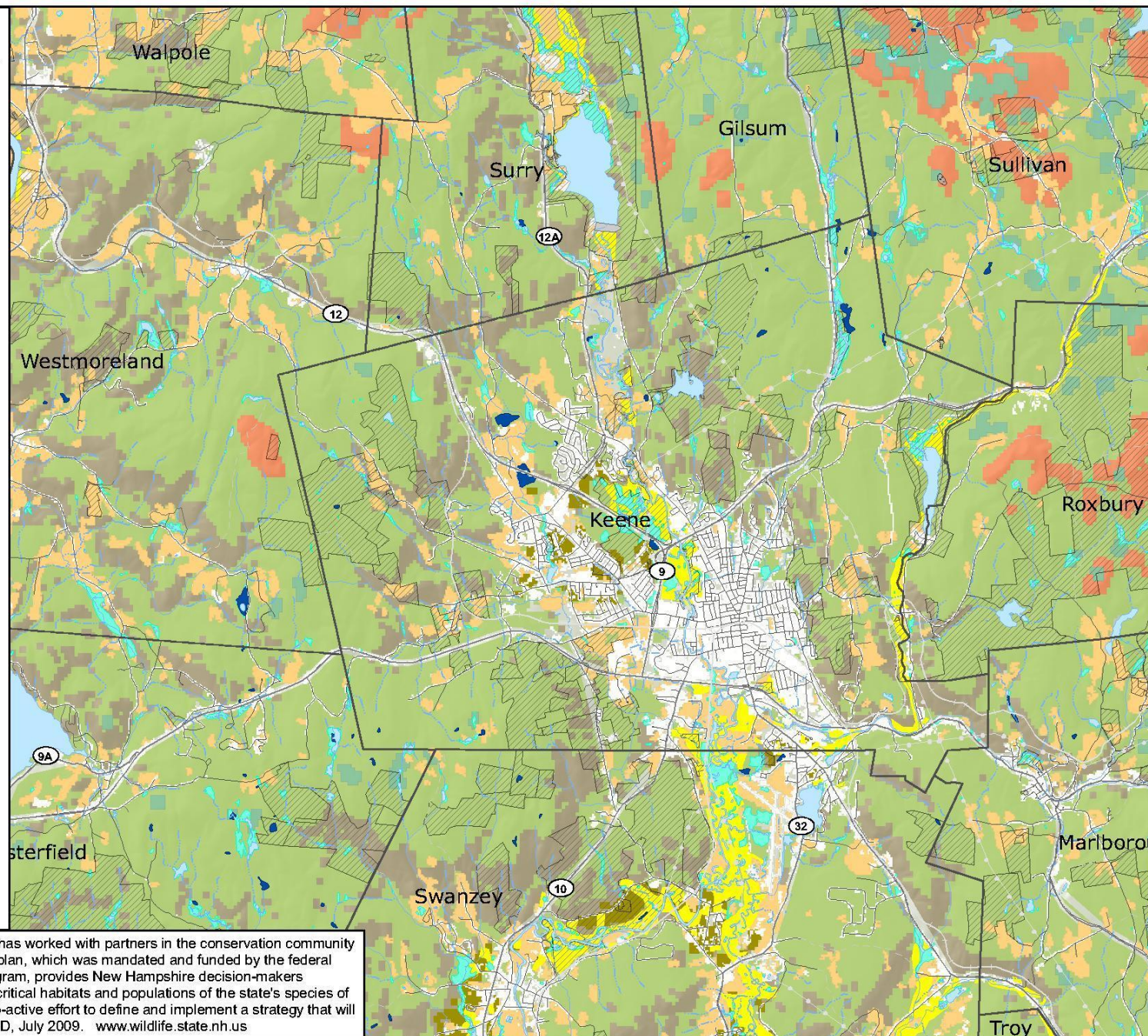
Locations of known and potential critical wildlife habitat in the state.

- Floodplain Forest
- Grassland
- Pine barren
- Cliff
- Rocky ridge or Talus slope
- Coastal Island
- Dune
- Salt marsh
- Peatland
- Wet meadow/
Shrub wetland
- Alpine

- Matrix forest**
- High-elevation Spruce-fir
 - Lowland Spruce-fir
 - Northern hardwood-conifer
 - Appalachian oak-pine
 - Hemlock-hardwood-pine
 - Developed land cover



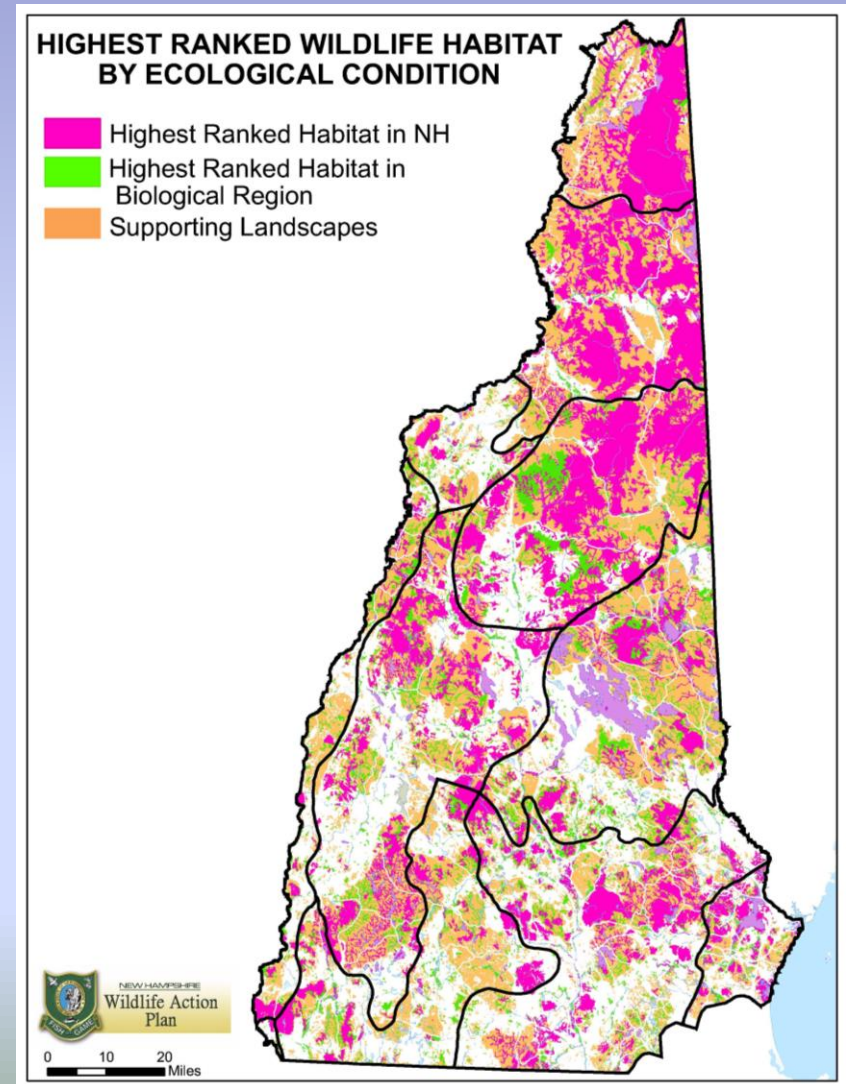
0 1 2 Miles







The New Hampshire Fish and Game Department has worked with partners in the conservation community to create the state's first Wildlife Action Plan. The plan, which was mandated and funded by the federal government through the State Wildlife Grants program, provides New Hampshire decision-makers with important tools for restoring and maintaining critical habitats and populations of the state's species of conservation and management concern. It is a pro-active effort to define and implement a strategy that will help keep species off of rare species lists. NHFGD, July 2009. www.wildlife.state.nh.us

Wildlife Action Plan Maps

Highest Ranked Wildlife Habitat By Ecological Condition



2010 HIGHEST RANKED WILDLIFE HABITAT BY ECOLOGICAL CONDITION

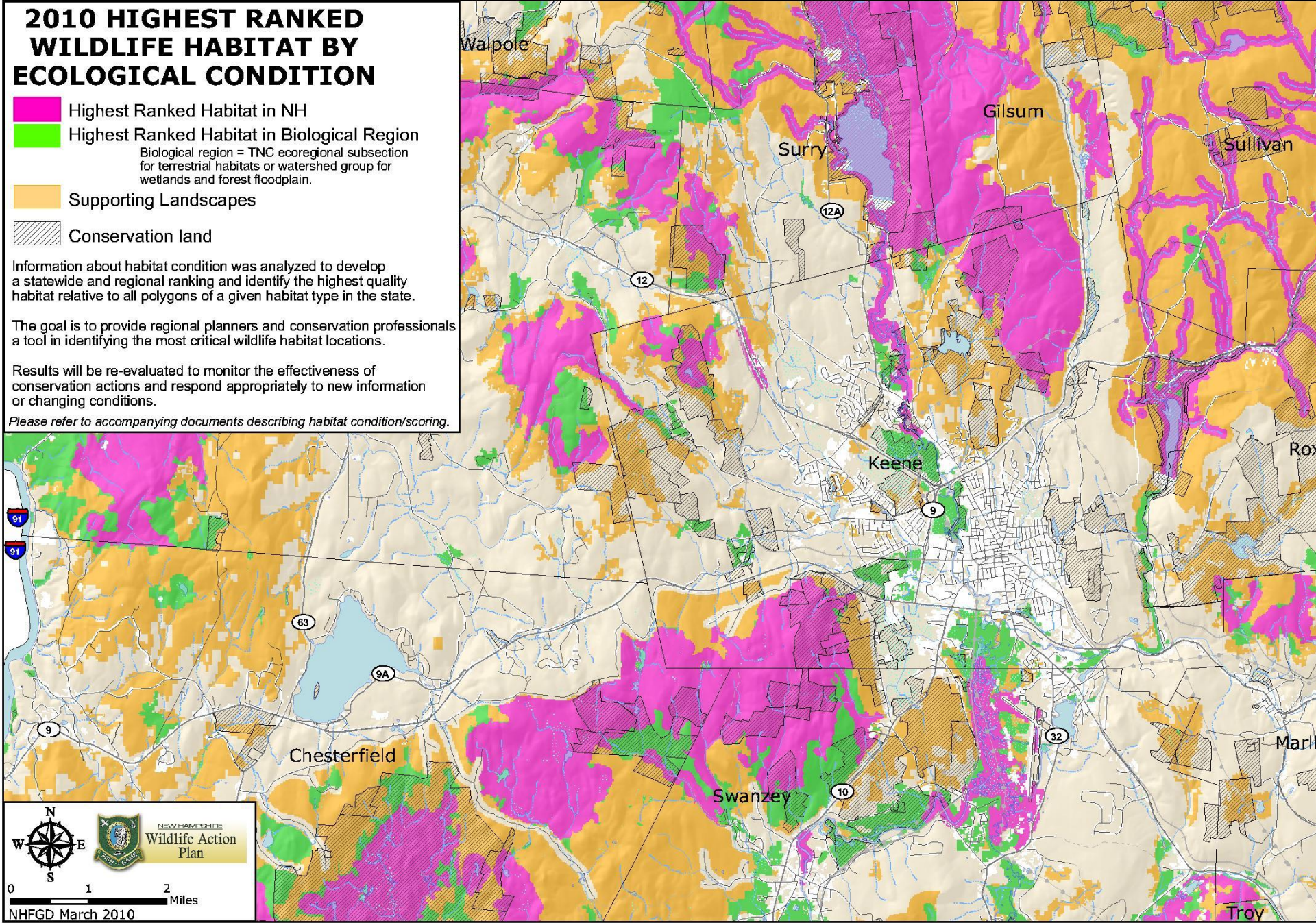
-  Highest Ranked Habitat in NH
-  Highest Ranked Habitat in Biological Region
Biological region = TNC ecoregional subsection for terrestrial habitats or watershed group for wetlands and forest floodplain.
-  Supporting Landscapes
-  Conservation land

Information about habitat condition was analyzed to develop a statewide and regional ranking and identify the highest quality habitat relative to all polygons of a given habitat type in the state.

The goal is to provide regional planners and conservation professionals a tool in identifying the most critical wildlife habitat locations.

Results will be re-evaluated to monitor the effectiveness of conservation actions and respond appropriately to new information or changing conditions.

Please refer to accompanying documents describing habitat condition/scoring.



WATER RESOURCES

- Stratified Drift Aquifer (USGS)
- Potentially Favorable Gravel Well Analysis 75gpm (NHDES)
- Very poorly drained soil (NRCS)
- Wetland (NWI - USFWS)
- Stream/Shoreline
- Water body
- Conservation Land (NH GRANIT)

Other data you can use:

Soils: Prime agricultural or forest

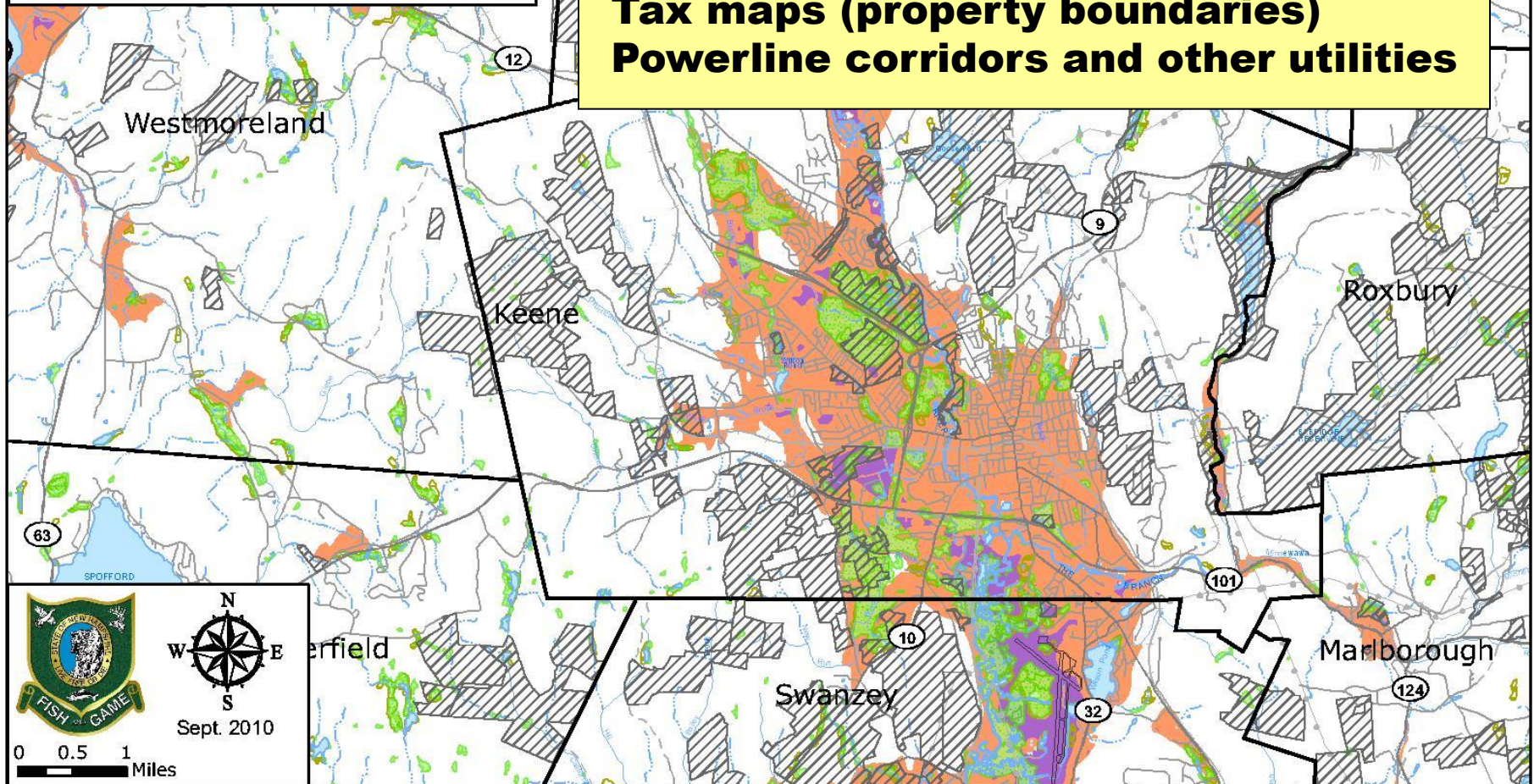
Public water supplies

Watershed boundaries

Unfragmented blocks

Tax maps (property boundaries)

Powerline corridors and other utilities





Highest Ranked Habitat

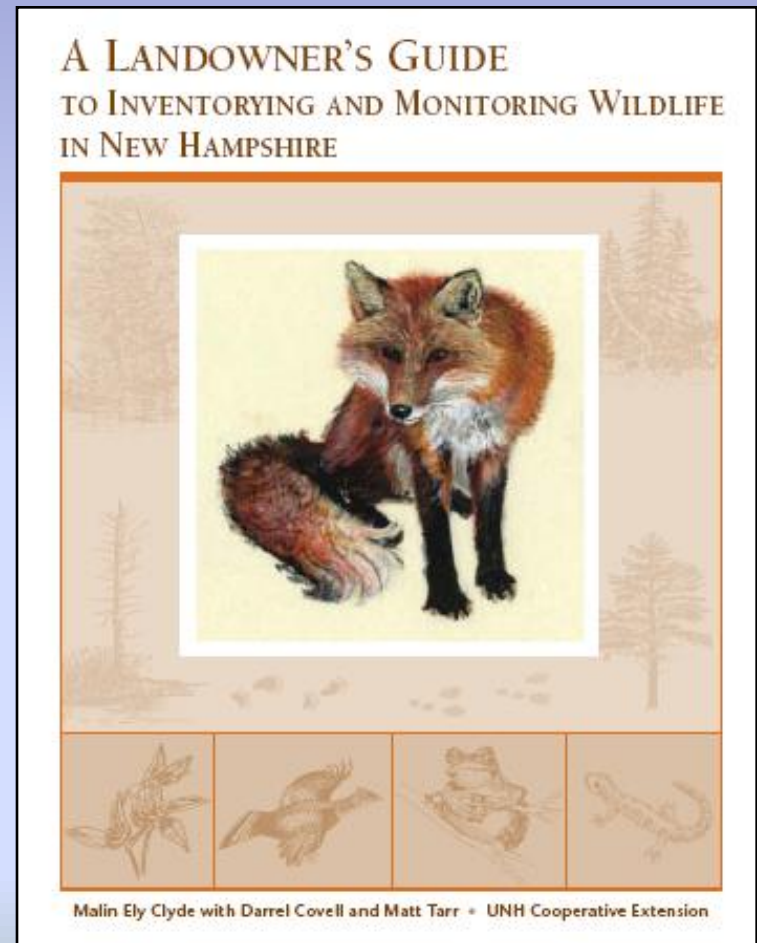
**Areas of local
importance**

Highest Ranked Habitat

**Cluster of wetland and
floodplain habitats**

Add Local Data to Your NRI

- **Vernal pool identification and assessment**
- **Wetland assessments**
- **Town forest inventory**
- **Trails**
- **Scenic areas**
- **Wildlife Inventories**
- **Other areas of local importance**





New Hampshire Fish and Game Department

Wildlife Sightings

[Home](#)

[About](#)

[Links](#)

[Contact Us](#)

**Have you found a Wildlife Action Plan species?
Report it to us!**

**Easy to use online format with map feature and
photo uploads.**

Also includes all reptiles and amphibians (RAARP).



Analyze the Information



Where are the most important resources?

Why is the resource important?

What are the threats to these resources?

Are there regionally significant resources?

Community Planning Actions

- **Writing a Conservation Plan**
- **Reviewing Land Use Planning Documents**
- **Establishing Land Use Regulations**
- **Establishing Zoning Ordinances**
- **Encouraging Voluntary Practices**
- **Protecting Land**
- **Managing Land**

Taking Action for Wildlife

A partnership of NH Fish and Game and UNH Cooperative Extension

[Home](#)

[Communities](#)

[Conservation Groups](#)

[Landowners](#)

[Habitat](#)

[Stories](#)

[About Us](#)



Taking Action for Wildlife is a collaboration between [NH Fish and Game](#) and [UNH Cooperative Extension](#) to assist communities, conservation groups and landowners conserve wildlife and habitats in New Hampshire.

This site contains many resources that can help you get involved in efforts to protect, restore and learn about wildlife and habitats.

Watch the [short video](#) (at left) to get started!

What's New?

NEW!! [Short video on creating young forests features NH landowners and wildlife](#)

[Summer 2012 Newsletter](#)

Community Assistance Applications Now Being Accepted from Merrimack County Communities:
[Download Application Here](#) (MS Word document)

Helpful Resources

[Speaking for Wildlife Presentations](#)

[Taking Action for Wildlife Newsletter Archives](#)

[Taking Action for Wildlife Resources & Publications](#)

[NH Wildlife Action Plan](#)

[Habitat Stewardship Brochures](#)

[Wildlife Habitat Maps](#) available for every NH town

➔ Sign up for
our e-newsletter,
"Taking Action for
Wildlife"



UNIVERSITY
of NEW HAMPSHIRE
Cooperative Extension