

# UNFRAGMENTED HABITAT

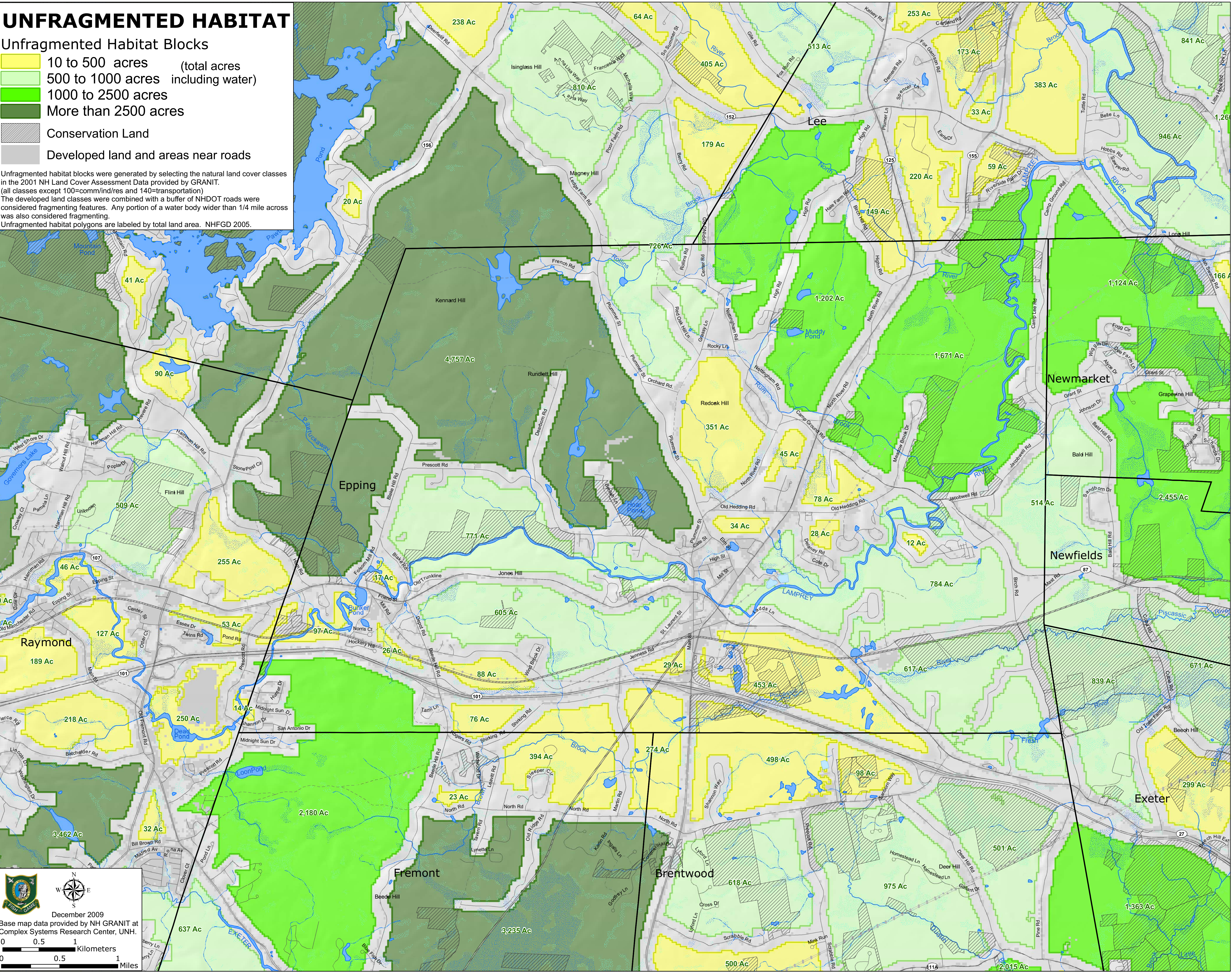
Unfragmented Habitat Blocks

- 10 to 500 acres (total acres)
- 500 to 1000 acres including water
- 1000 to 2500 acres
- More than 2500 acres

Conservation Land

Developed land and areas near roads

Unfragmented habitat blocks were generated by selecting the natural land cover classes in the 2001 NH Land Cover Assessment Data provided by GRANIT. (all classes except 100=comm/ind/res and 140=transportation)  
The developed land classes were combined with a buffer of NHDOT roads were considered fragmenting features. Any portion of a water body wider than 1/4 mile across was also considered fragmenting.  
Unfragmented habitat polygons are labeled by total land area. NHFGD 2005.



December 2009  
Base map data provided by NH GRANIT at  
Complex Systems Research Center, UNH.

0 0.5 1 Kilometers  
0 0.5 1 Miles