

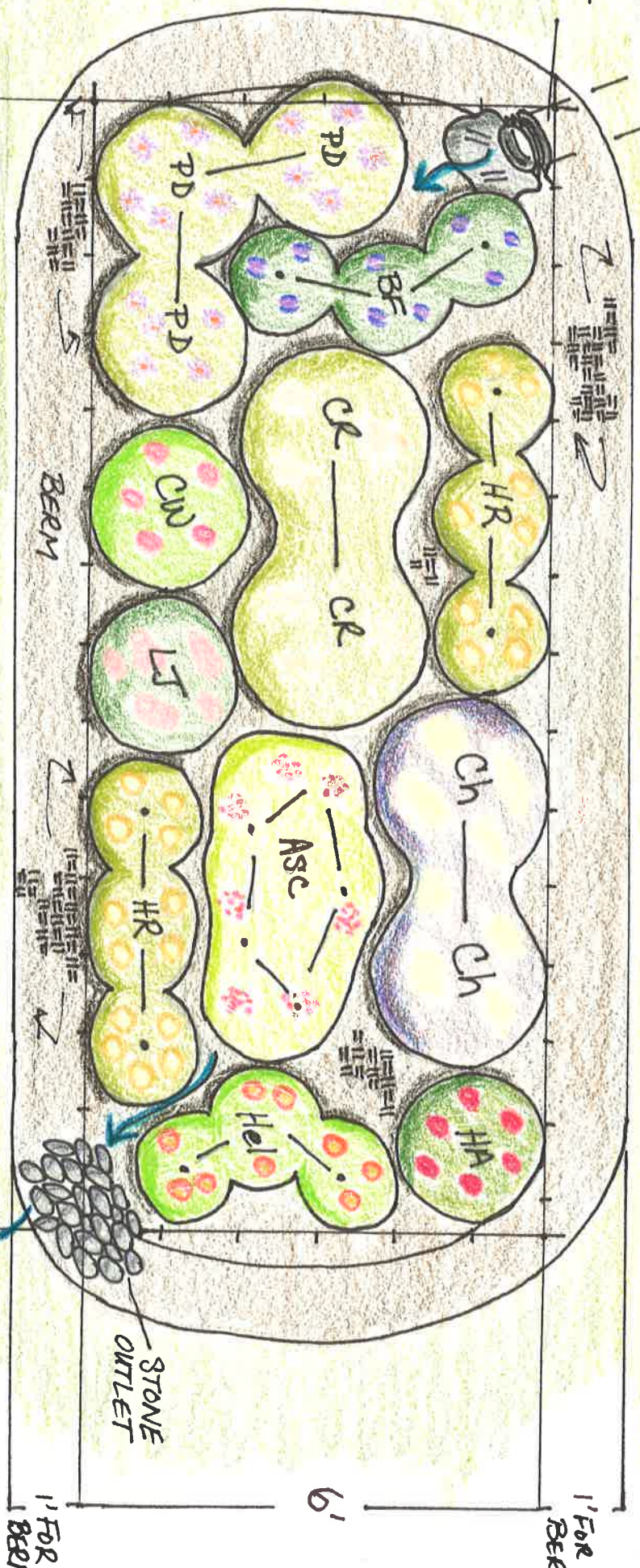
HAMPTON, NH · 160 LITTLE RIVER RD
 RAIN GARDEN PLANT PLAN

TRENCH DOWNSPOUT FROM HOUSE

INLET

↪ LAWN ↪

↪ LAWN ↪



11' FOR BERM

6'

11' FOR BERM

STONE OUTLET

HAMPTON, NH • 160 LITTLE RIVER RD



160 Little River Rd – Rain Garden Plant List- Revised by CNeal

Plant List

Code	Latin name	Common name	Diameter	Height	Color - season	Number
HA	Hemerocallis - hearts afire or other red	Hearts afire daylily	2'	2.5'	Red - summer	1
HR	Hemerocallis - Happy Returns or Stella d'oro	Happy returns daylily	1.5'	1.5'	Yellow - summer	6
CW	Hemerocallis - Catherine Woodbury or Gentle Shepherd or similar	Catherine Woodbury Daylily	2'	33"	Light/pinky - summer	1
CR	Veronacastrum virginicum	Culver's root	2.5'	3-6'	White - summer	2
BF	Iris versicolor	Blue flag	1.5'	2'	Purple - spring	3
Asc	Asclepias incarnata	Red (swamp) milkweed	1'	3-5'	Pink-red - summer	5
Hel	Helenium 'Red Jewel' or similar	Red Jewel helenium	2'	2-3'	Red-orange - summer	3
LJ	Eupatorium dubium 'Little Joe'	Joe Pye cv.	2'	2-3"	Pinkish - summer	1
Ch	Eupatorium rugosum 'Chocolate'	Joe Pye cv.	2.5'	2-3'	Dark purple leaves, white flowers- summer	2
PD	Aster novae-angliae 'Purple Dome'	NE Aster cv.	2'	1.5'	Purple - fall	3