



Blueberry Fruit Fly

Pest Fact Sheet 22

Dr. Alan T. Eaton, Extension Specialist, Entomology

Introduction

The blueberry fruit fly (a.k.a. blueberry maggot or *Rhagoletis mendax*) can be a serious pest of blueberry in New Hampshire. It causes damage to fruits throughout the blueberry regions of the Atlantic States. This close relative of the apple maggot differs slightly in form and size, although for many years they both were considered the apple maggot. Increasingly, we are using the common name blueberry fruit fly to refer to this species. It is more appealing to customers, compared to the term maggot.

Description

The adult is a 1/8" fly with black zigzag bands on its wings. Its body is black with white markings and a prominent white dot between the bases of its wings. The fly is slightly smaller than its close relative, the apple maggot.

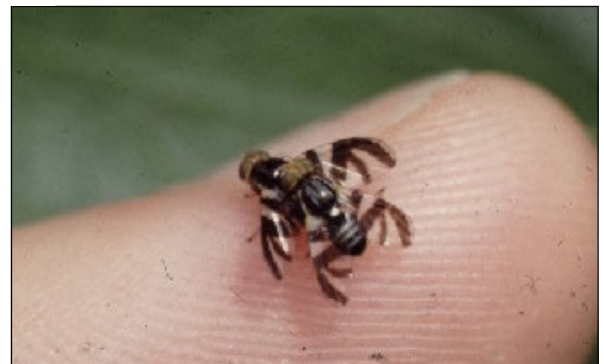
The immature stage is a white, legless maggot that can be found in ripened berries. Pupae are oval, hard, and tan-colored. They are found 1-2" deep in the soil surrounding blueberries.

Life Cycle

The life cycle of the blueberry fruit fly is almost identical to that of the apple maggot. It overwinters as a pupa 1-2" below the surface of the soil. About June 30th, as the first berries ripen, the adult emerges and within a week, it feeds and mates. The females lay their eggs singly, beneath the surface of a ripening berry. The larvae hatch from the eggs and feed for a two-week period during which time larvae molt twice. When fully grown, the larvae drop to the ground (if the berries have not already fallen) to enter the soil and pupate. Then they overwinter as pupae.

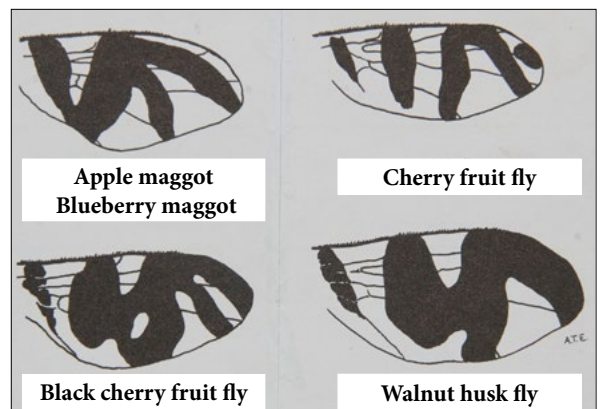
UNH Cooperative Extension Programs

	Community and Economic Development
	Food and Agriculture ✓
	Natural Resources
	Youth and Family



Adult blueberry fruit flies mating. Credit: Alan T. Eaton.

The blueberry fruit fly can be a serious pest of blueberry in New Hampshire.



Rhagoletis wing band pattern diagram. All of our *Rhagoletis* flies look similar. The wing band pattern is distinctive, and can be recognized at a glance. Credit: Alan Eaton.



Adults are most abundant July 1st to 15th. Credit: Alan T. Eaton.

Blueberry Fruit Fly vs Apple Maggot

Besides morphological differences in size and structures, the blueberry fruit fly differs from the apple maggot in two ways:

- (1) During egg-laying, the blueberry fruit fly female deposits only one egg per fruit, whereas the apple maggot female deposits more than one egg per fruit.
- (2) The species do not cross hosts - apple maggots do not attack blueberries, and blueberry fruit flies do not attack apples.

Management

IPM Strategies:

- Cultural Practices — Highbush plantings that are kept well-picked usually have few problems with blueberry fruit fly. In plantings where growers do not apply insecticides and do not monitor with traps, blueberry fruit fly populations can build to very high levels, and cause shutdown of an operation (total loss of the crop). Lowbush areas frequently have more severe problems, because of the single harvest, and because rough hillsides are difficult to treat with insecticides.
- Monitoring — Sticky red sphere or V-position yellow sticky traps can be used to monitor pest numbers and timing. Refer to our fact sheet "Using Traps to Monitor Blueberry Fruit Fly in New Hampshire": http://extension.unh.edu/resources/files/Resource002077_Rep3071.pdf
- Chemical Control — There are many insecticides registered to control the pest, including materials for organic growers.

Consult your county Agricultural Field Specialist for specific recommendations.

Did You Know?

Highbush plantings that are kept well-picked usually have few problems with blueberry fruit fly.



Red sphere sticky trap used to monitor blueberry fruit flies. Credit: Alan T. Eaton.



UGA1227056



UGA1227057

Blueberry fruit fly maggots on and in blueberries. Credits: Jerry A. Payne, USDA Agricultural Research Service, Bugwood.org.

Summary

Table 1 summarizes key information on the blueberry maggot.

Table 1: Summary

Summary Table	
Damaging Stage	Maggot (larva)
Part of Plant Attacked	Ripened fruit
Overwintering Stage	Pupa in soil
Number of Generations per Year	One
Time of Year of Greatest Damage	July and August
Number of Pesticide Applications for Control	Zero to three

Notes: Refer to the text for more thorough information on the blueberry maggot.

Stop! Read the label on every pesticide container each time before using the material. Pesticides must be applied only as directed on the label to be in compliance with the law. All pesticides listed in this publication are contingent upon continued registration. Contact the Division of Pesticide Control at (603) 271-3550 to check registration status. Dispose of empty containers safely, according to New Hampshire regulations.

Updated: July 2016 (Dr. Alan T. Eaton and Rachel Maccini)
Reformatted: July 2016 (Marie-Eve Jacques)

Visit our website:
extension.unh.edu

UNH Cooperative Extension brings information and education into the communities of the Granite State to help make New Hampshire's individuals, businesses, and communities more successful and its natural resources healthy and productive. For 100 years, our specialists have been tailoring contemporary, practical education to regional needs, helping create a well-informed citizenry while strengthening key economic sectors.

The University of New Hampshire Cooperative Extension is an equal opportunity educator and employer. University of New Hampshire, U.S. Department of Agriculture and New Hampshire counties cooperating.

About the Author

Dr. Alan T. Eaton is an Extension Specialist in Entomology and a professor at the University of New Hampshire. Much of his work is on management of fruit pests and ticks.

For More Information

State Office

Taylor Hall
59 College Rd.
Durham, NH 03824
<http://extension.unh.edu>

Education Center and Information Line

answers@unh.edu
1-877-EXT-GROW
(1-877-398-4769)
9 am–2 pm M–F
Search key words:
“UNH Education Center”