



Working with State Agencies to Increase Connectivity: Resources Available for Multiple Scales

Protection of Climate Corridors Workshop
Wells Reserve, June 29, 2017

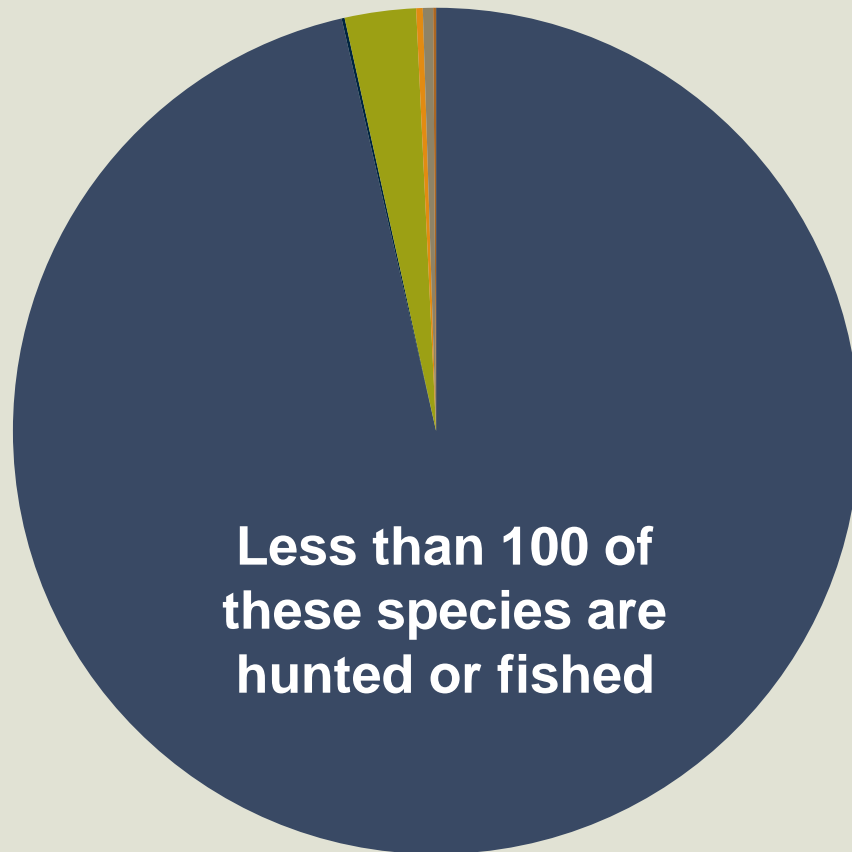
Amanda Shearin, Habitat Outreach Coordinator
Maine Department of Inland Fisheries and Wildlife

We Manage the Full Extent of Inland Species



Through these doors
pass the stewards of
Maine's fish & wildlife

How Many 'Inland' Species Do We Manage?



■ Invertebrates (15,000)

■ Amphibians (18)

■ Birds (423)

■ Fish (39)

■ Mammals (61)

■ Reptiles (17)

Partnerships are Essential



*Logos represent only a small subset of partners

A Statewide Approach: Maine's 2015 Wildlife Action Plan



<http://www.maine.gov/ifw/wildlife/reports/MWAP2015.html>

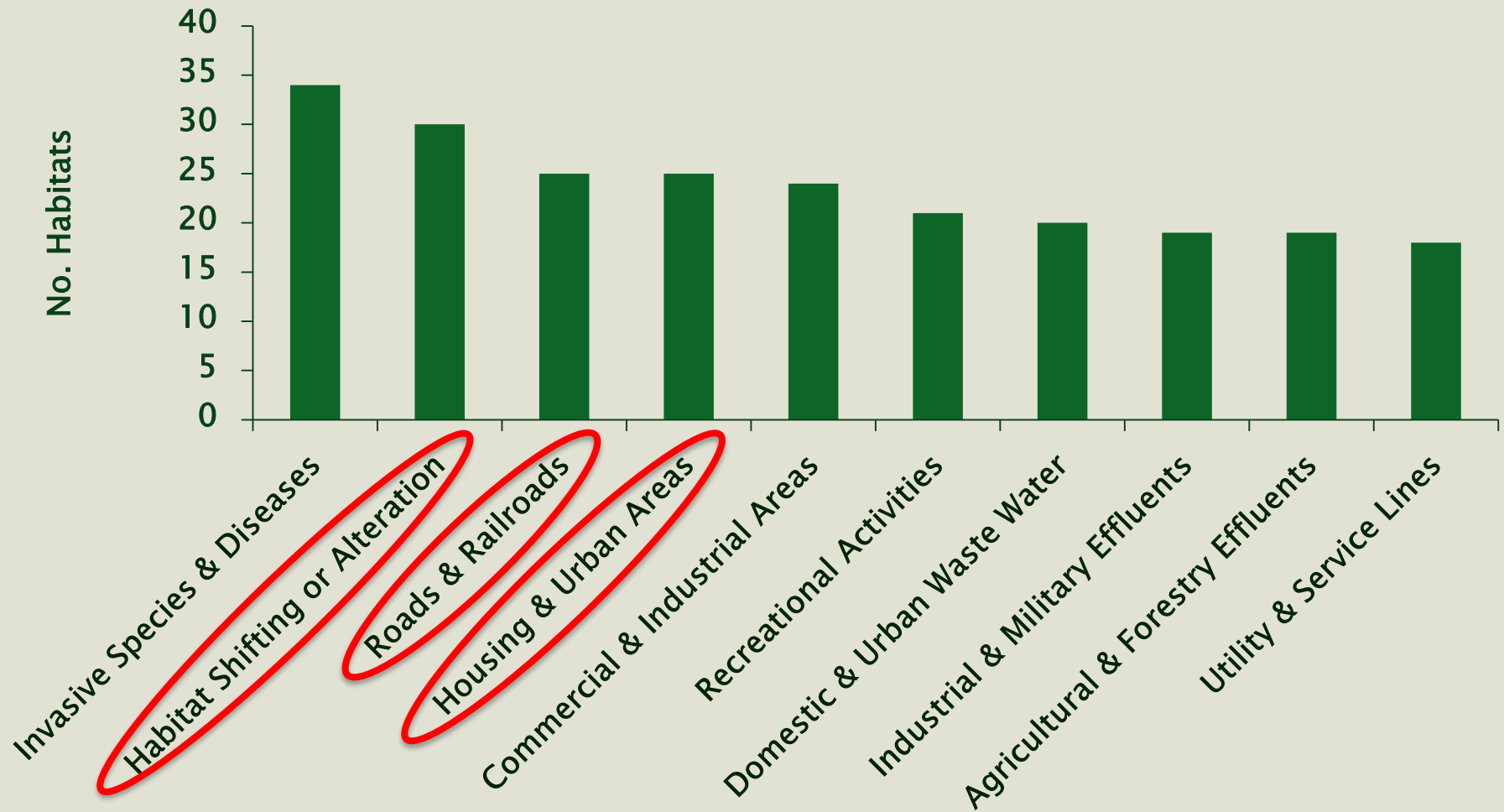
Fragmentation, Transportation, and Climate Change



Maine's Top Species Stressors



Maine's Top Habitat Stressors



Example Wildlife Action Plan Conservation Approaches



Species: Determine whether the restoration of tidal action would improve resiliency to sea level rise and whether restricted areas would serve as high marsh refugia.



Habitats: Collaborate with partners to develop standards for new/replacement road stream crossings

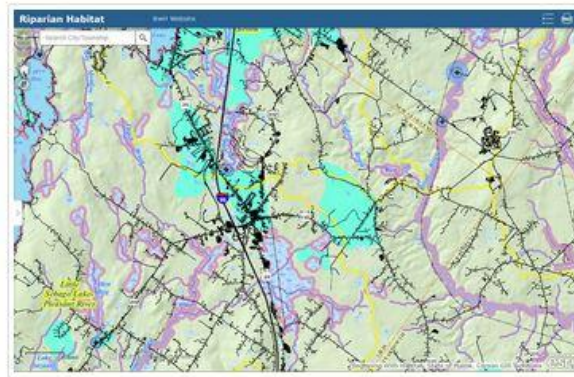
Planning Assistance Tools



Beginning With Habitat

BwH Website

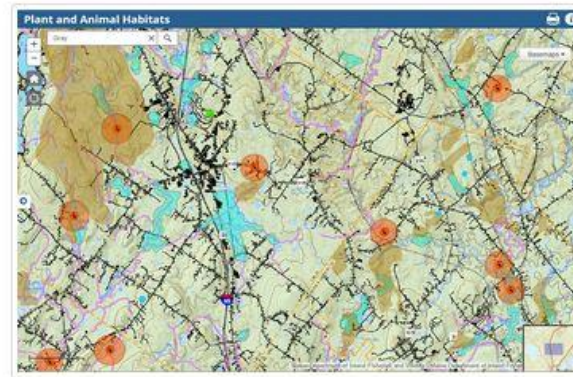
Map Viewers



Map 1- Riparian Habitats

Beginning with Habitat Map 1 depicts major surface water features and drainage areas, associated shoreline habitats and riparian zones, and aquifers and wells that supply public drinking water.

[Open Viewer](#)



Map 2- Plant and Animal Habitats

Beginning with Habitat Map 2 depicts known rare, threatened, or endangered plant and animal occurrences, as well as "Significant Wildlife Habitat," "Essential Wildlife Habitat," and other important wildlife habitats.

[Open Viewer](#)

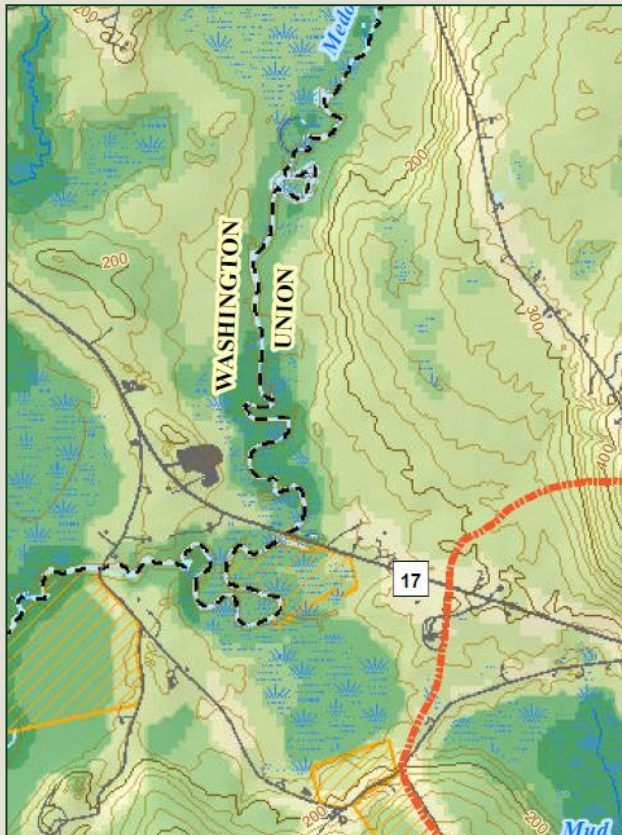
Local Habitat Blocks and Connectors



Prioritizing Connectivity



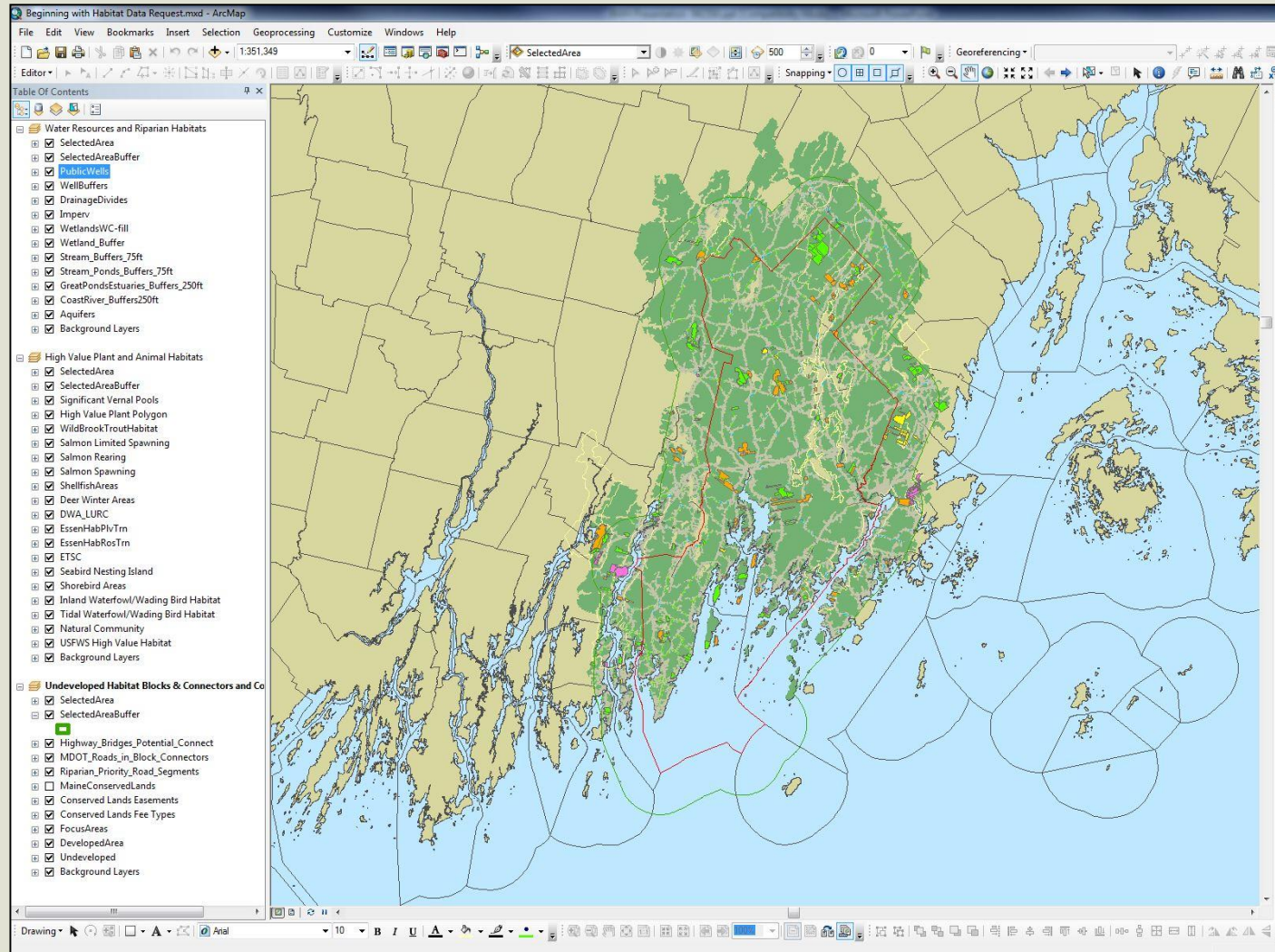
Co-occurrence Models



Modeled Connectors



Upscaling and Downscaling



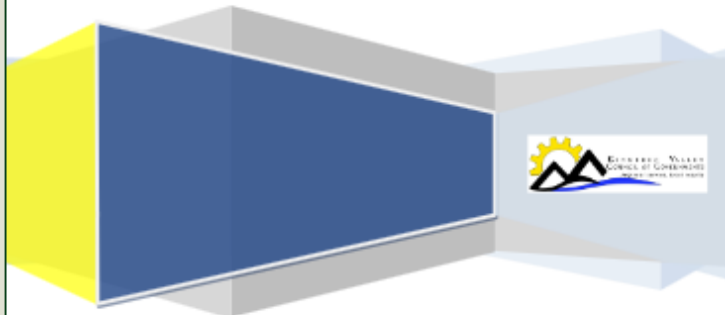
Applied Applications: Municipal Comprehensive Plans



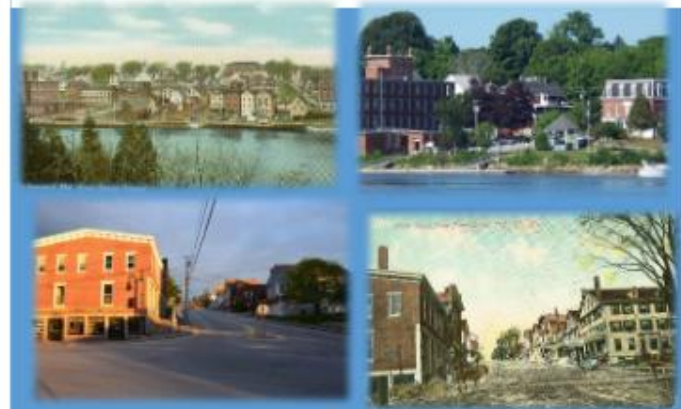
Town of Hartland

2016 Comprehensive Plan

Prepared by Kennebec Valley Council of Governments



TOWN OF RICHMOND, MAINE COMPREHENSIVE PLAN



TOWN OF RICHMOND: 38 GARDINER STREET, RICHMOND, ME 04357

DRAFT: FOR STATE REVIEW FEBRUARY 2016

Connectivity in Action



Connectivity in Action



2013-06-03 3:48:33 PM M 2/3

86°F



HC600 HYPERFIRE

RECONYX

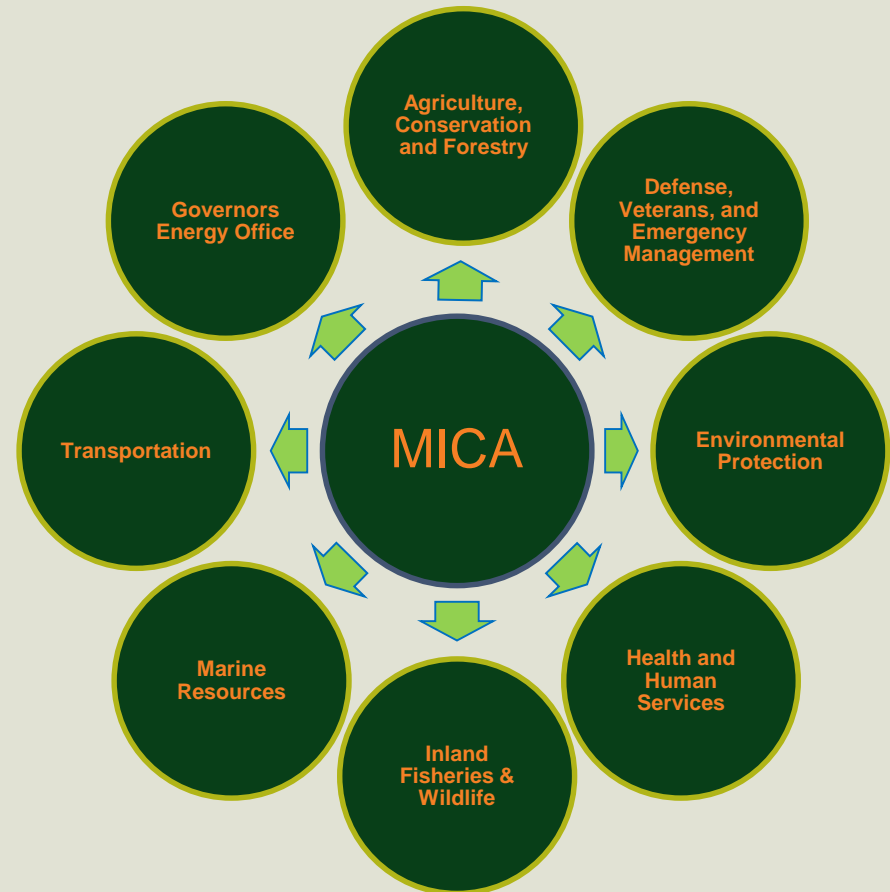
Connectivity in Action



Interagency Collaboration



- Maine Interagency Climate Adaptation Workgroup (MICA)
- Duties
 - Information sharing and collaboration
 - Reporting
 - Online resources and technical expertise



Thank you!



Amanda Shearin
Habitat Outreach Coordinator/Wildlife Biologist
Maine Department of Inland Fisheries and Wildlife
284 State Street, Augusta, ME 04333
207-287-5260
amanda.f.shearin@maine.gov
www.maine.gov/ifw/wildlife/reports/MWAP2015.html