



Extension

Effective Disease Management in Northeastern Vineyards



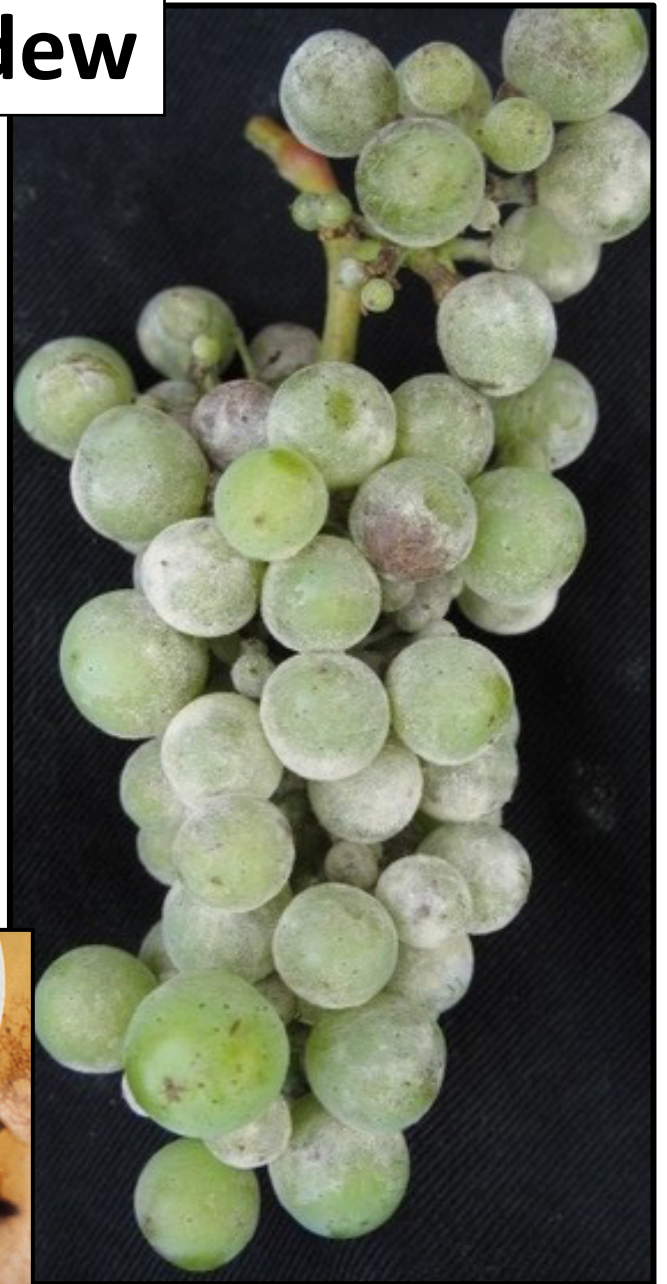
IPM Grants Program

8:30	Photo ID Quiz: Identifying Diseases and Pests in the Vineyard
9:00	Biology and Control of Downy and Powdery Mildews
10:30	Break
10:45	Biology and Control of "The Rots": Black Rot, Sour Rot, and Botrytis
12:00	Lunch
1:00	Getting good coverage: Sprayer choice and calibration for best disease management
1:30	1) Biology and Control of Phomopsis and Anthracnose; (2) Fungicide Characteristics and Resistance Management
2:30	Panel Discussion: Fungicide programs in practice.
3:30	Adjourn

Japanese beetle skeletonizing

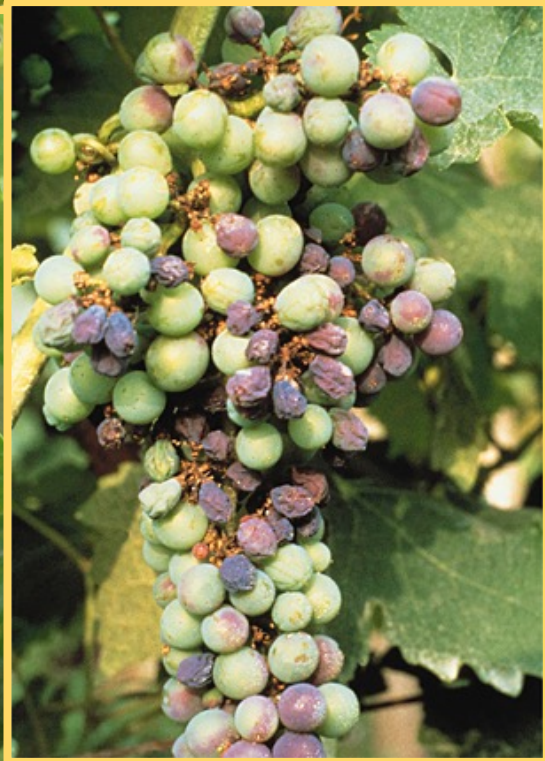


Powdery mildew



Grape phylloxera





Downy mildew



Nitrogen deficiency

Anthracnose

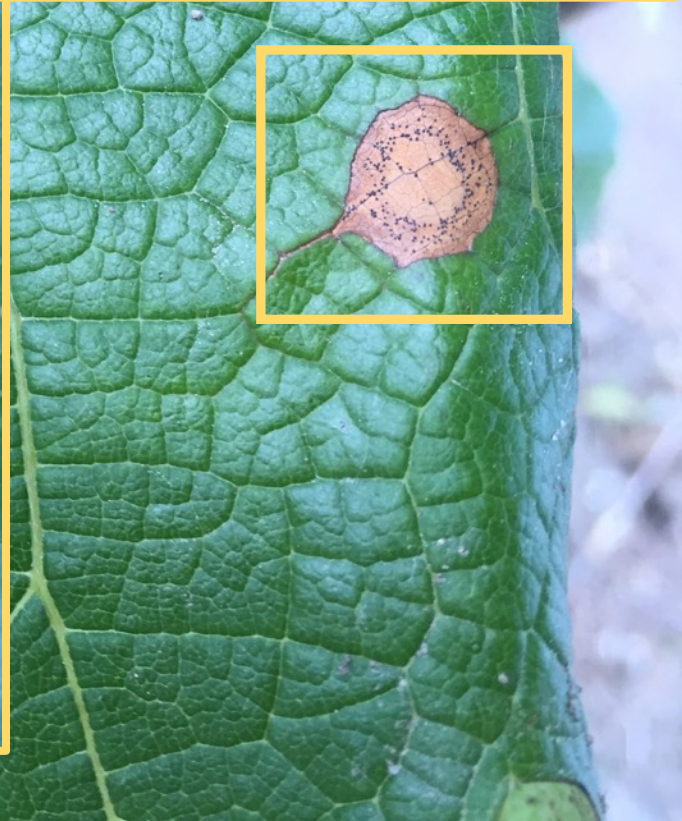
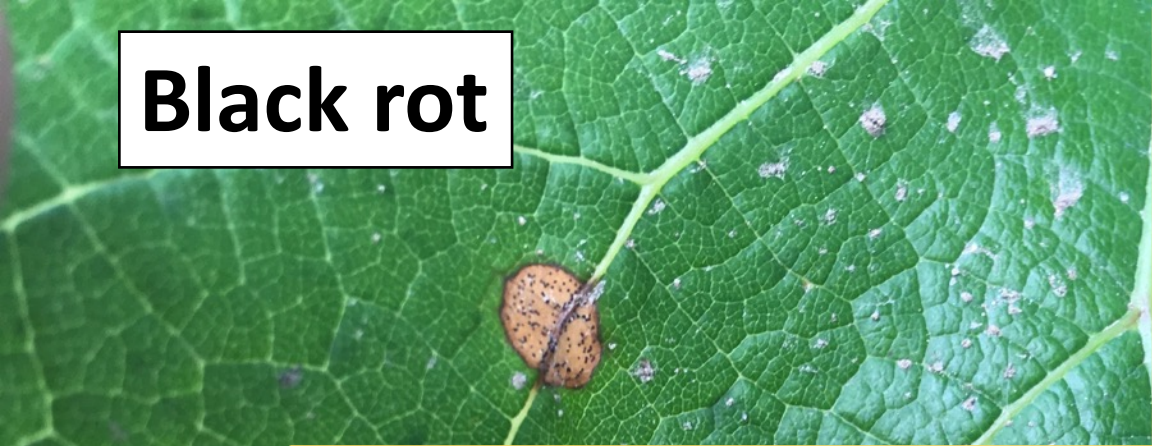


Shows up on older leaves first

Magnesium deficiency



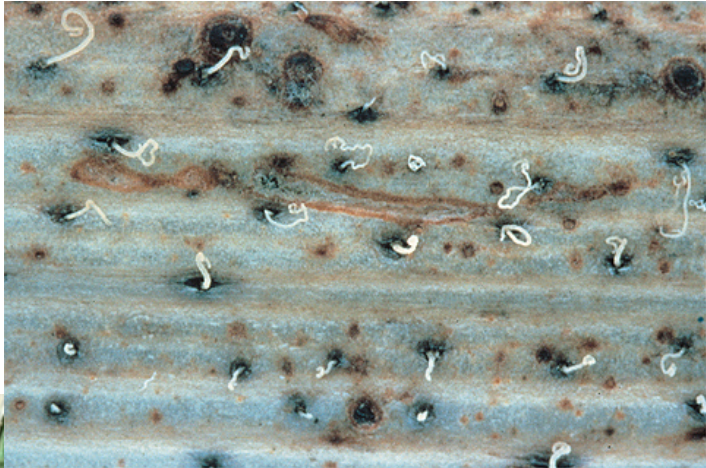
Black rot



Potato leafhopper injury ('hopper burn')



Phomopsis



What is this nutritional deficiency, and what is the key symptom?

**Zinc deficiency
(small leaves)**



**Grape berry moth
(rot is secondary)**

