

Junior Station 1

Match the horse with its color from the list below. Answer with a **LETTER**.

- A. Bay
- B. Black
- C. Chestnut
- D. Gray
- E Palomino



Junior Station 2

Match the horse with its breed name from the list below. Answer with a **LETTER**

- A. Appaloosa
- B. Friesian
- C. Paint
- D. Quarter Horse
- E. Thoroughbred



Junior Station 3

Match the equipment with its name from the list below. Answer with a **LETTER**

- A. Breast Collar
- B. Dressage Saddle
- C. Hunt Seat Saddle
- D. Western Bridle
- E. Western Saddle

1.



2.



3.



4.

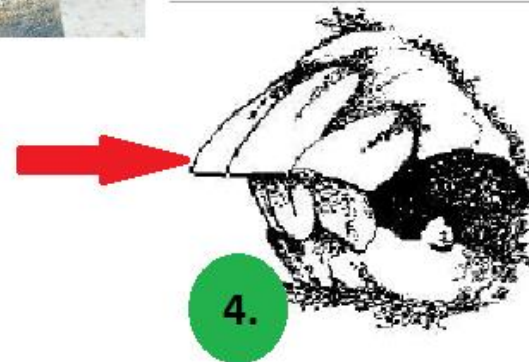
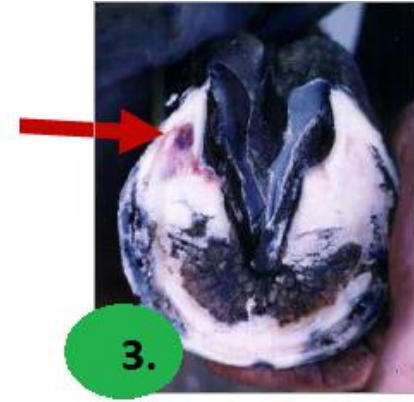


5.

Junior Station 4

Match the defect with its name
from the list below. Answer with
a **LETTER**

- A. Capped elbow
- B. Hoof Crack
- C. Parrot Mouth
- D. Sole Bruise
- E. Splint

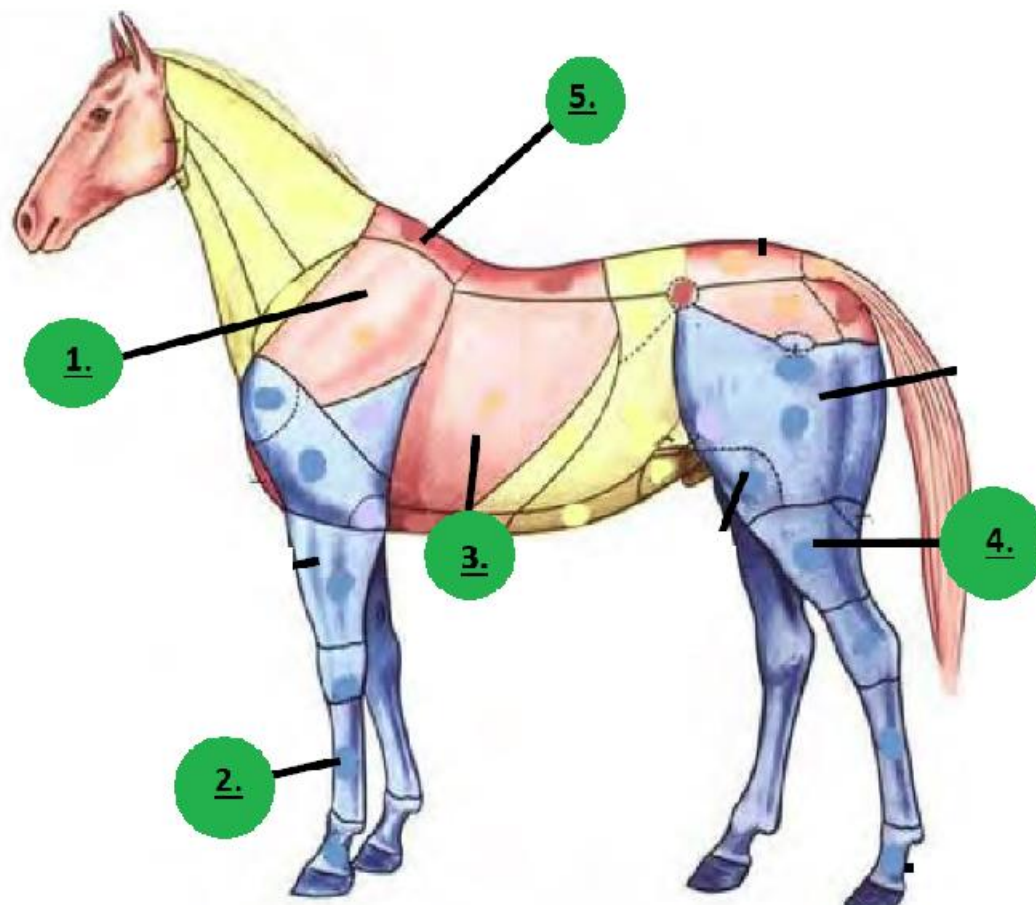


Junior Station 5

Match each horse part with its name from the list below. Answer with a

LETTER

- A. Barrel
- B. Cannon
- C. Gaskin
- D. Shoulder
- E. Withers



Good Job! Last JUNIOR station (suggested age 8-10, feel free to use for any age. Continue for answers and Intermediate/Senior stations

Junior Station Answers:

Station 1 Color

1. C
2. D
3. A
4. B
5. E

Station 2 Breeds

1. E
2. C
3. D
4. A
5. B

Station 3 Horse Equipment

1. D
2. C
3. B
4. E
5. A

Station 4 Defects

1. E
2. B
3. D
4. C
5. A

Station 5

1. D
2. B
3. A
4. C
5. E

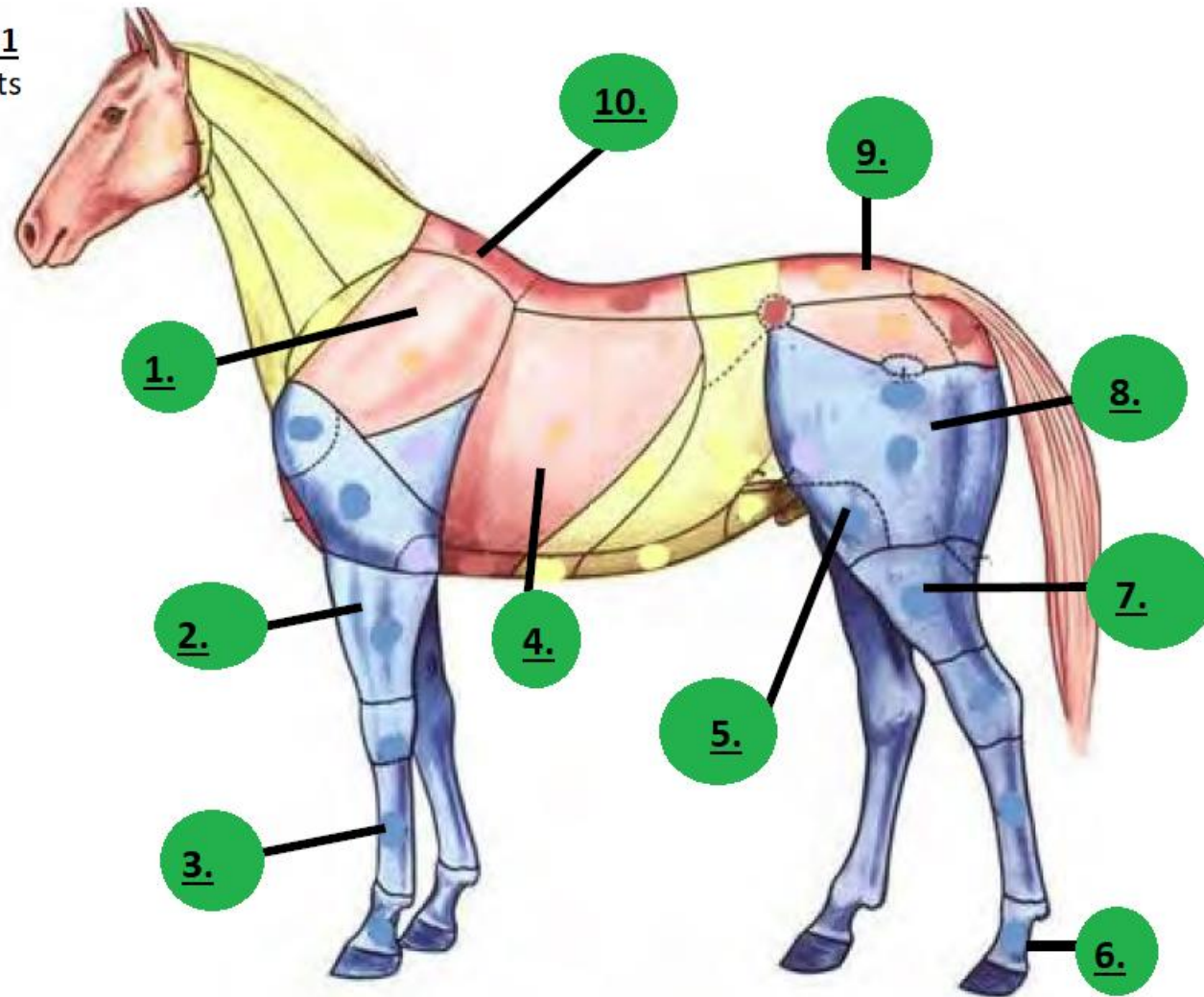
The following stations are targeted to INTERMEDIATES (age 11-13) and SENIORS (age 14+), although they may be used by any age. The first 5 are easier and stations 5-10 are more challenging. The typical Hippology Contest allows **2 minutes** per station. Answers follow the last station.

Intermediate Senior Station 1

Match each horse part with its name from the list below.

Answer with a LETTER.

- A. Barrel
- B. Cannon
- C. Croup
- D. Forearm
- E. Gaskin
- F. Pastern
- G. Haunch or Thigh
- H. Shoulder
- I. Stifle
- J. Withers



Intermediate/Senior Station 2

Match the horse activity with its name from the list below. Answer with a LETTER

- A. Dressage
- B. Endurance Riding
- C. English Pleasure
- D. Eventing (cross country phase)
- E. Flat Racing
- F. Harness Racing
- G. Show Jumping
- H. Steeplechase (jump racing)
- I. Vaulting
- J. Western Pleasure



Intermediate/Senior Station 3

Match each horse with its color from the list below. Answer with a **LETTER**

- A. Bay
- B. Black
- C. Blue Roan
- D. Brown
- E. Chestnut
- F. Gray
- G. Grullo
- H. Palomino
- I. Perlino
- J. Red Roan

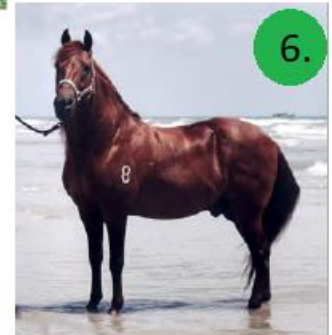


Intermediate/Senior Station 4

Match the horse breed with its name from the list below.

Answer with a LETTER

- A. Appaloosa
- B. Belgian
- C. Friesian
- D. Morgan
- E. Paint
- F. Paso Fino
- G. Percheron
- H. Quarter Horse
- I. Saddlebred
- J. Thoroughbred

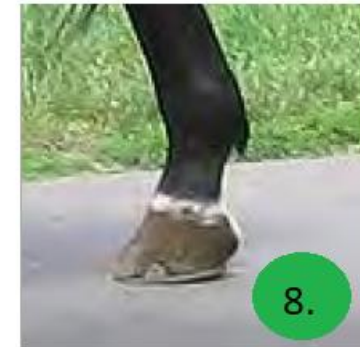
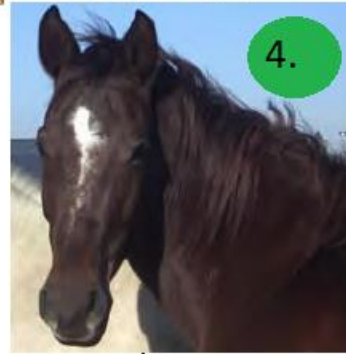


Intermediate/Senior Station 5

Match the marking with its name from the list below.

Answer with a LETTER

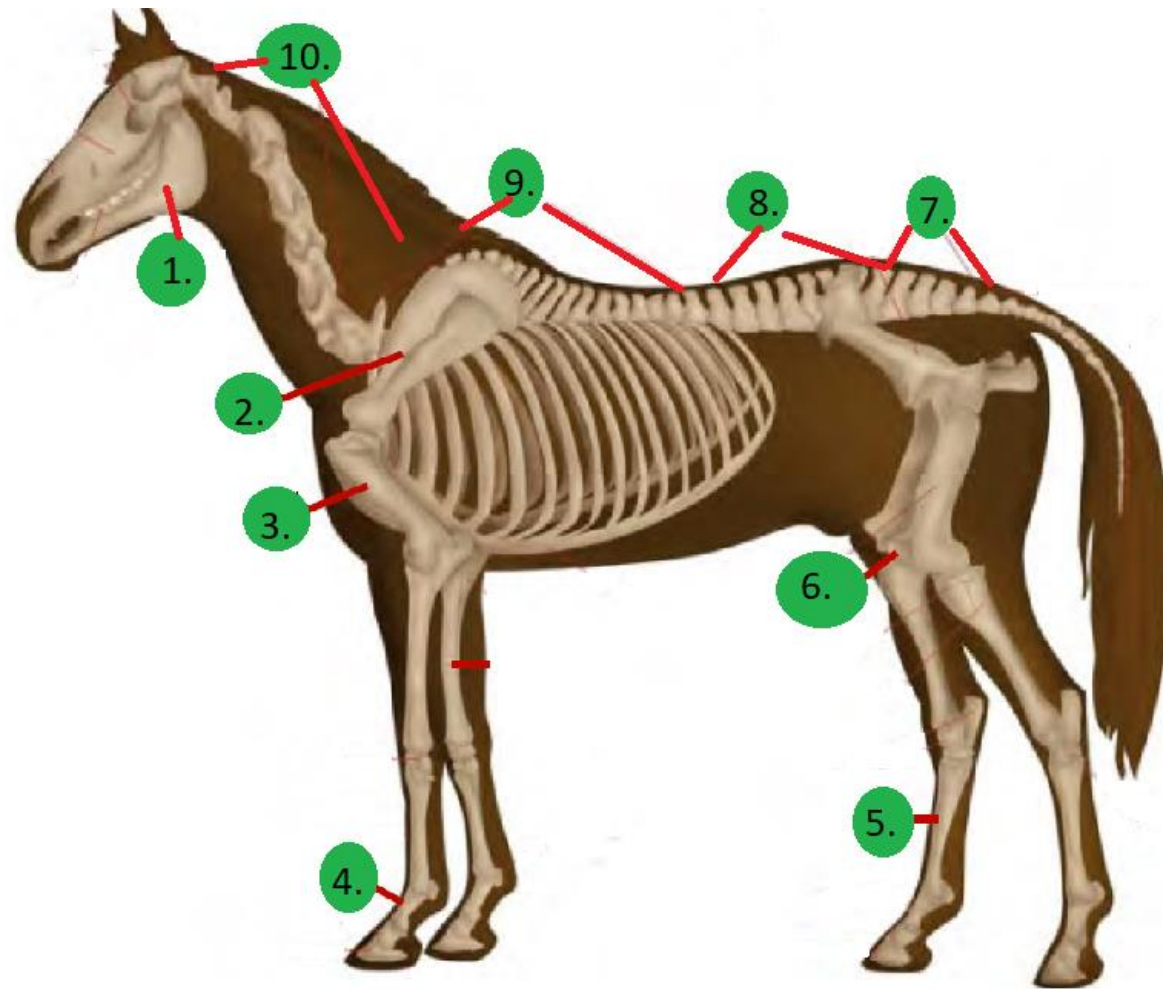
- A. Ankle (or pastern)
- B. Bald Face
- C. Blaze
- D. Coronet
- E. Half Stocking
- F. Snip
- G. Star
- H. Star and Stripe
- I. Stocking
- J. Stripe



Intermediate/Senior Station 6 (more challenging)

Match each skeletal part with its name from the list below. Answer with a LETTER

- A. Cervical Vertebrae
- B. First Phalanx (P1)
- C. Humerus
- D. Large Metatarsal
- E. Lumbar Vertebrae
- F. Mandible
- G. Patella
- H. Sacral Vertebrae
- I. Scapula
- J. Thoracic Vertebrae

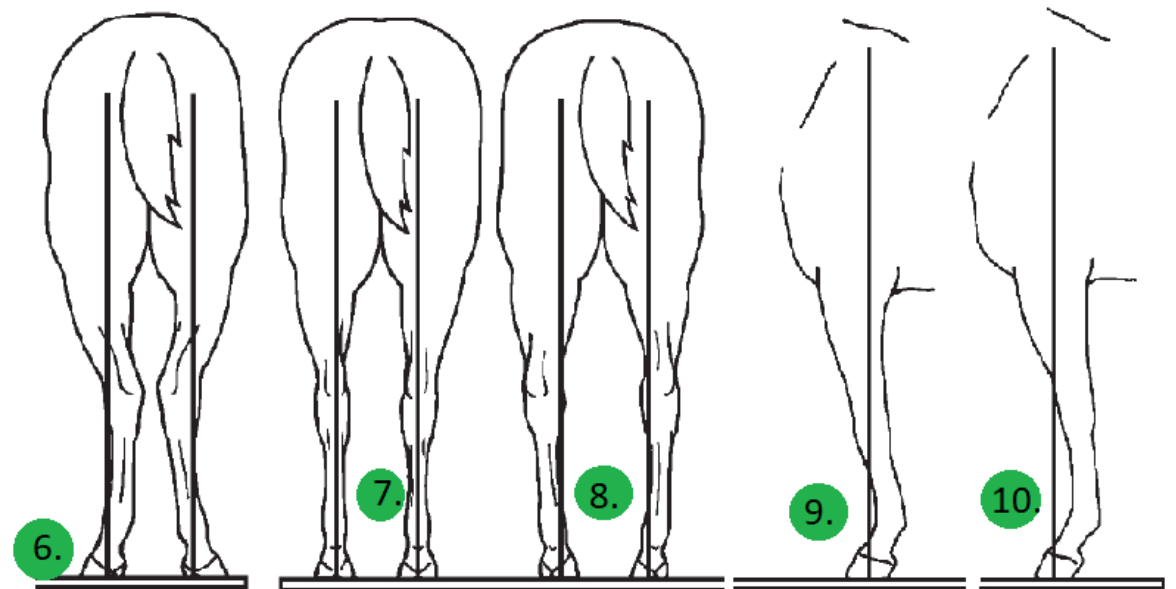
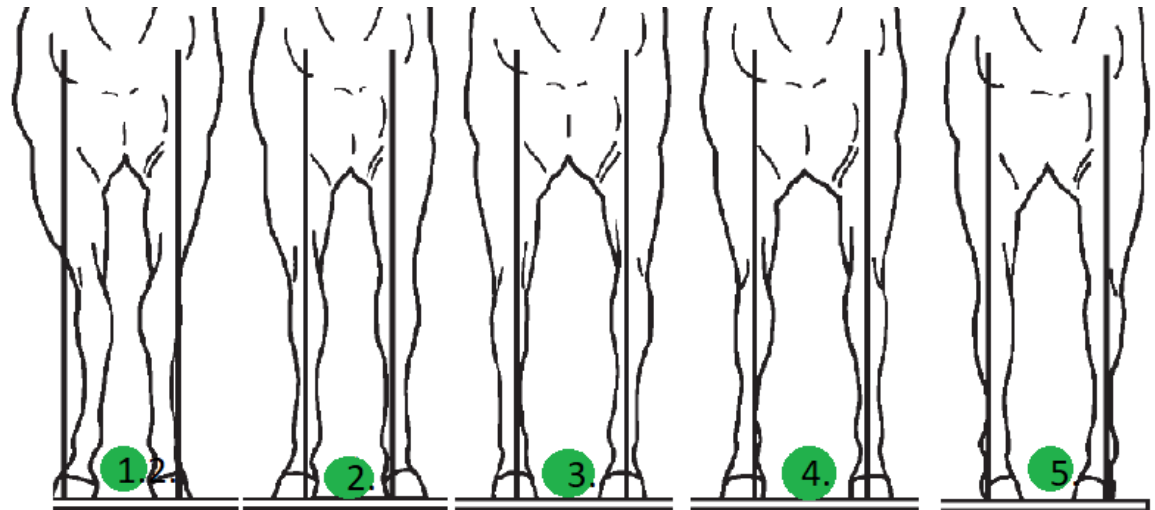


**Intermediate/Senior Station 7 (more
challenging/
senior level)**

Match the fault with its name from the
list below.

Answer with a LETTER

- A. Bandy legged (bow legged behind)
- B. Bench Kneed
- C. Bow Kneed (bow legged in front)
- D. Buck Kneed
- E. Calf kneed
- F. Cow hocked
- G. Ideal
- H. Knock Knees
- I. Splay Footed (toes out)
- J. Toes In (pigeon toed)

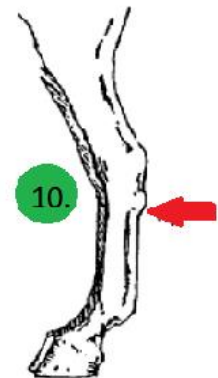
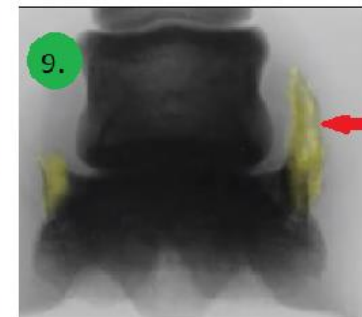
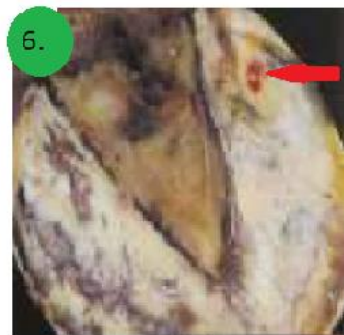
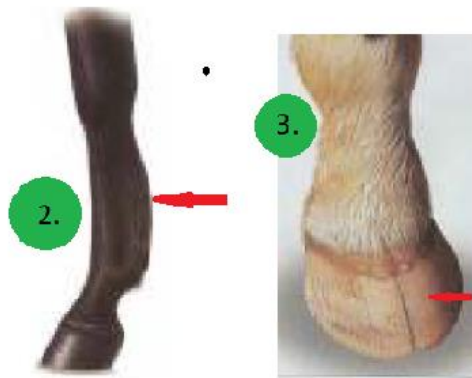


**Intermediate/Senior Station 8 (more challenging/
senior level)**

Match the disorder with its name from the list below.

Answer with a LETTER

- | | |
|----------------------|----------------|
| A. Bog Spavin | F. Founder |
| B. Bowed Tendon | G. Quittor |
| C. Capped Hock | H. Sidebone |
| D. Curb | I. Sole Bruise |
| E. Fistulous Withers | J. Toe Crack |

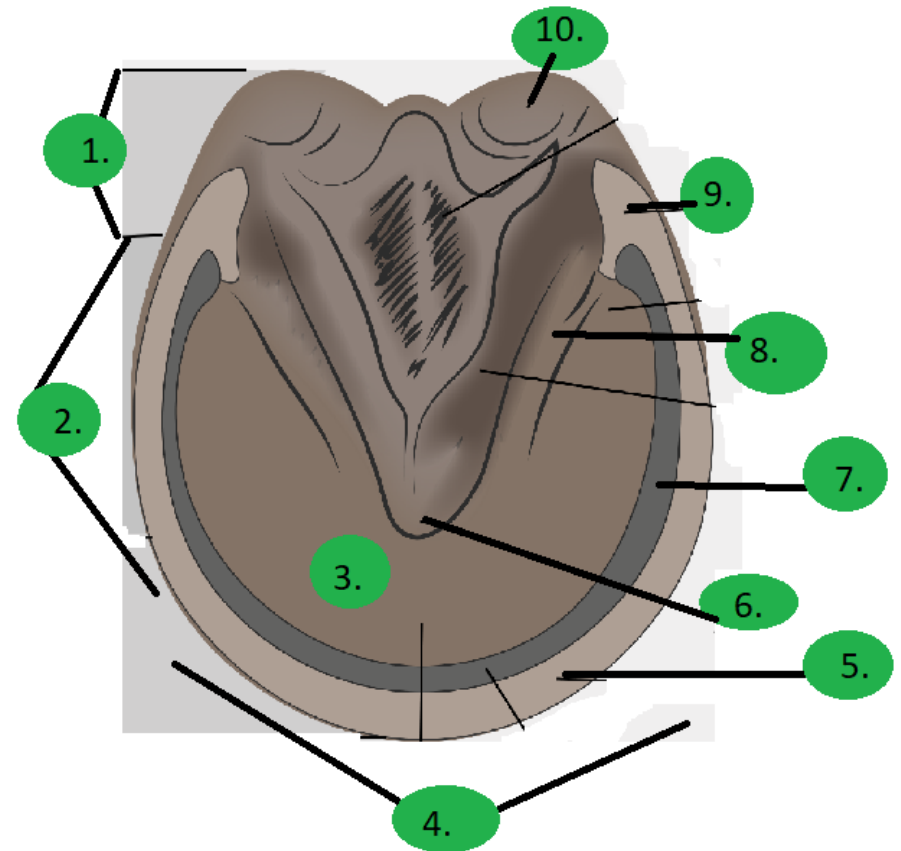


Intermediate/Senior Station 9 (more challenging/

Match the hoof part with its name from the list below.

Answer with a LETTER

- | | |
|------------------|---------------|
| A. Angle of Wall | F. Quarter |
| B. Bar | G. Sole |
| C. Bulb of Heel | H. Toe |
| D. Frog | I. Wall |
| E. Heel | J. White Line |

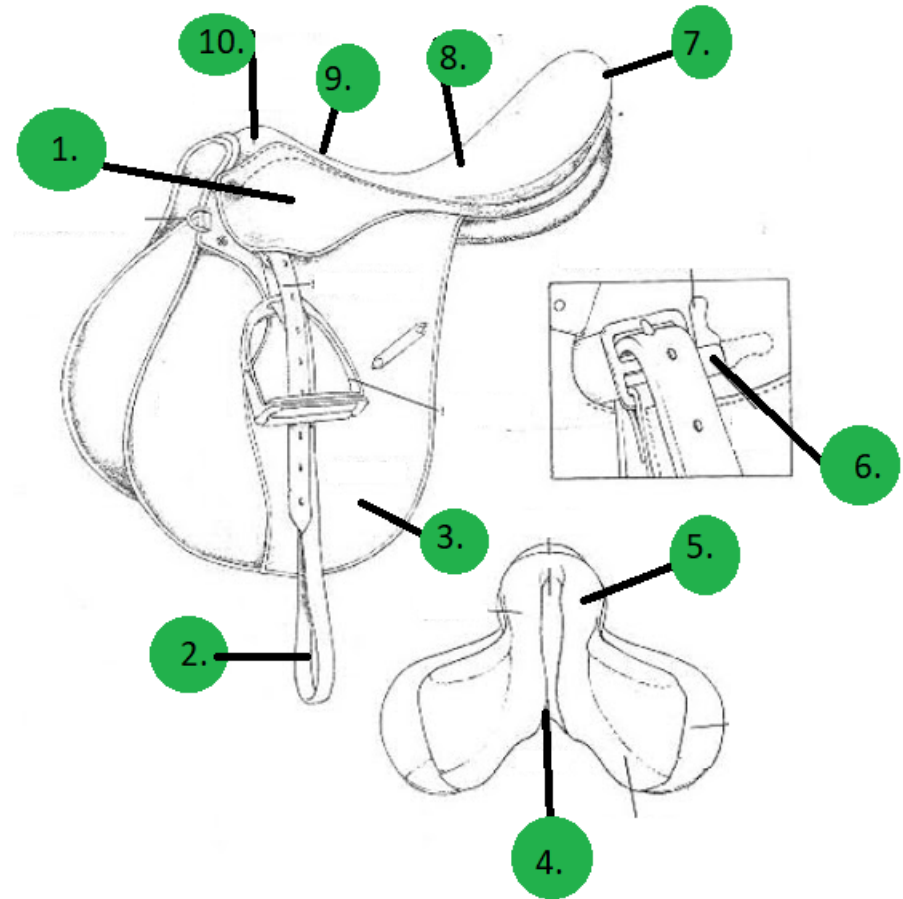


Intermediate/Senior Station 10 (more challenging/

Match the saddle part with its name from the list below.

Answer with a LETTER

- | | |
|-----------|--------------------|
| A. Cantle | F. Seat |
| B. Flap | G. Skirt |
| C. Gullet | H. Stirrup Bar |
| D. Panel | I. Stirrup Leather |
| E. Pommel | J. Twist |



This is the last Intermediate/Senior Station. See the next page for the correct answers

Intermediate/Senior Station Answers

Station 1 Parts	Station 2 Activities	Station 3 Color	Station 4 Breeds	Station 5 Markings
1. H	1. C	1. A	1. J	1. B
2. G	2. E	2. E	2. E	2. C
3. B	3. A	3. D	3. H	3. G
4. A	4. H	4. C	4. A	4. H
5. I	5. F	5. G	5. C	5. F
6. F	6. I	6. F	6. F	6. J
7. E	7. D	7. J	7. G	7. I
8. C	8. B	8. I	8. B	8. D
9. G	9. G	9. B	9. I	9. E
10. J	10. J	10. H	10. D	10. A

Station 6 Skeletal	Station 7 Faults	Station 8 Disorders	Station 9 Hoof	Station 10 Saddle
1. F	1. H	1. F	1. E	1. G
2. I	2. I	2. B	2. F	2. I
3. C	3. C	3. J	3. G	3. B
4. B	4. B	4. C	4. H	4. C
5. D	5. J	5. A	5. I	5. D
6. G	6. F	6. I	6. D	6. H
7. H	7. G	7. E	7. J	7. A
8. E	8. A	8. G	8. F	8. F
9. J	9. D	9. H	9. A	9. J
10. A	10. E	10. D	10. C	10. E